

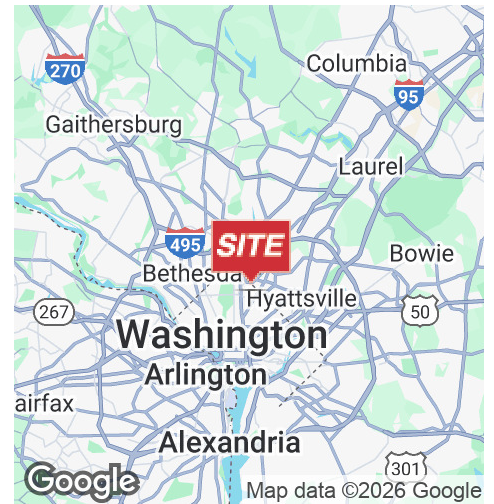
INDUSTRIAL PROPERTY FOR LEASE



6500-6527 CHILLUM PLACE NW Washington, DC 20012

PROPERTY HIGHLIGHTS

- Total of 45,937± SF available
- 18' ceiling height
- Zoned PDR-1 (Bulk Commercial and Light Manufacturing)
- Close to DC-Maryland line, plus Takoma and Fort Totten Metro stations
- Approx. 16-minute drive to Capital Beltway (I-495)



SPACES	LEASE RATE	SPACE SIZE	LOADING
Suite E	Negotiable	13,270 SF	1 dock
Suite G	Negotiable	32,667 SF	5 docks / 1 oversized drive-in

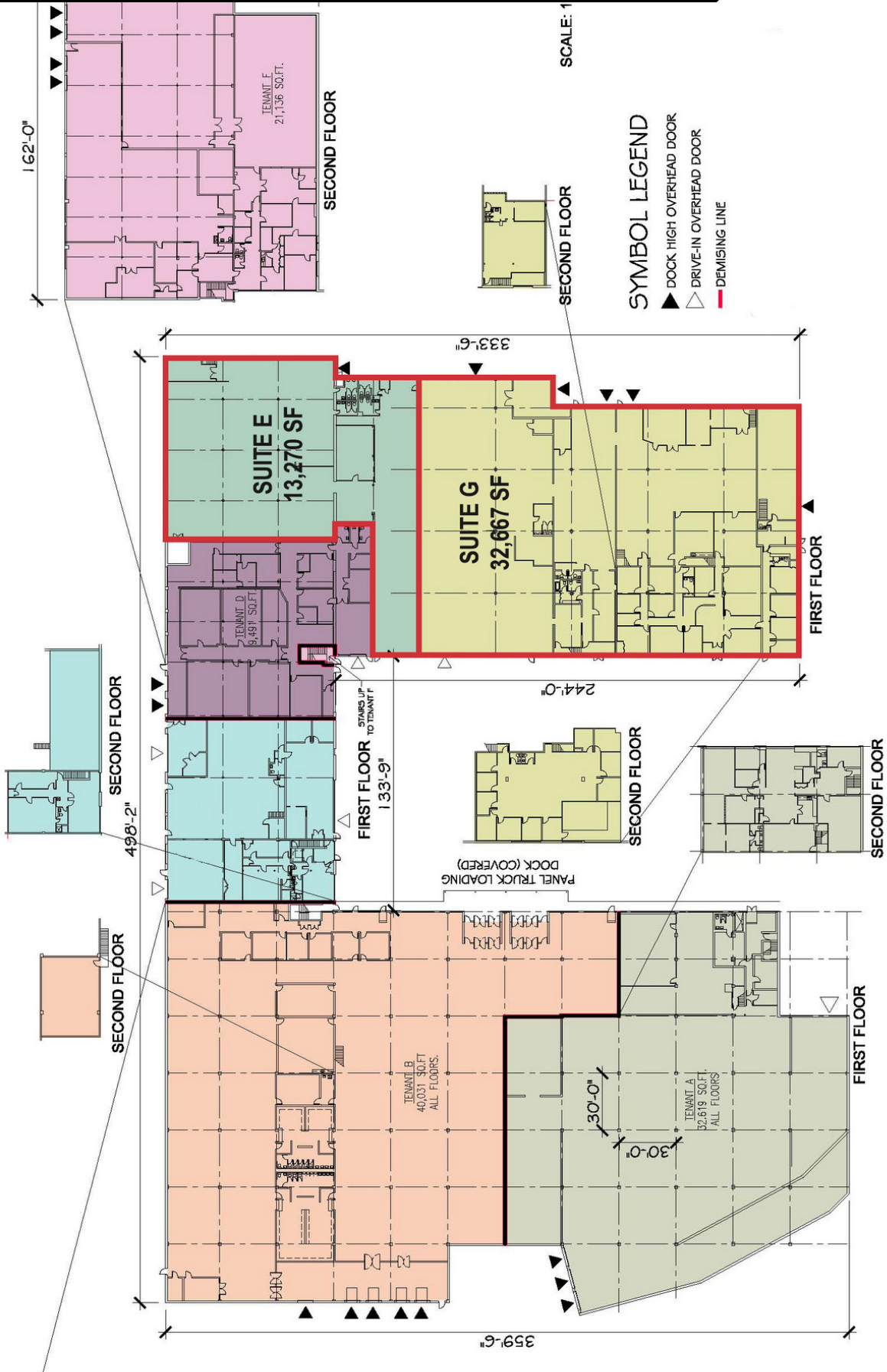
PETER BURLEIGH
O: 301.918.2913
pburleigh@naimichael.com

BRADY THOMPSON
O: 301.918.2912
bthompson@naimichael.com



10100 Business Pkwy | Lanham, MD 20706 | +1 301.459.4400 | naimichael.com

The information contained herein has been given to us by the owner of the property or other sources we deem reliable. We have no reason to doubt its accuracy, but we do not guarantee it. Floor plans, site plans and other graphic representations of this property have been reduced and reproduced, and are not necessarily to scale. All information should be verified prior to purchase or lease.



Industrial Property For Lease

6500-6527 CHILLUM PLACE NW, WASHINGTON, DC 20012



Naimichael

PETER BURLEIGH

BRADY THOMPSON

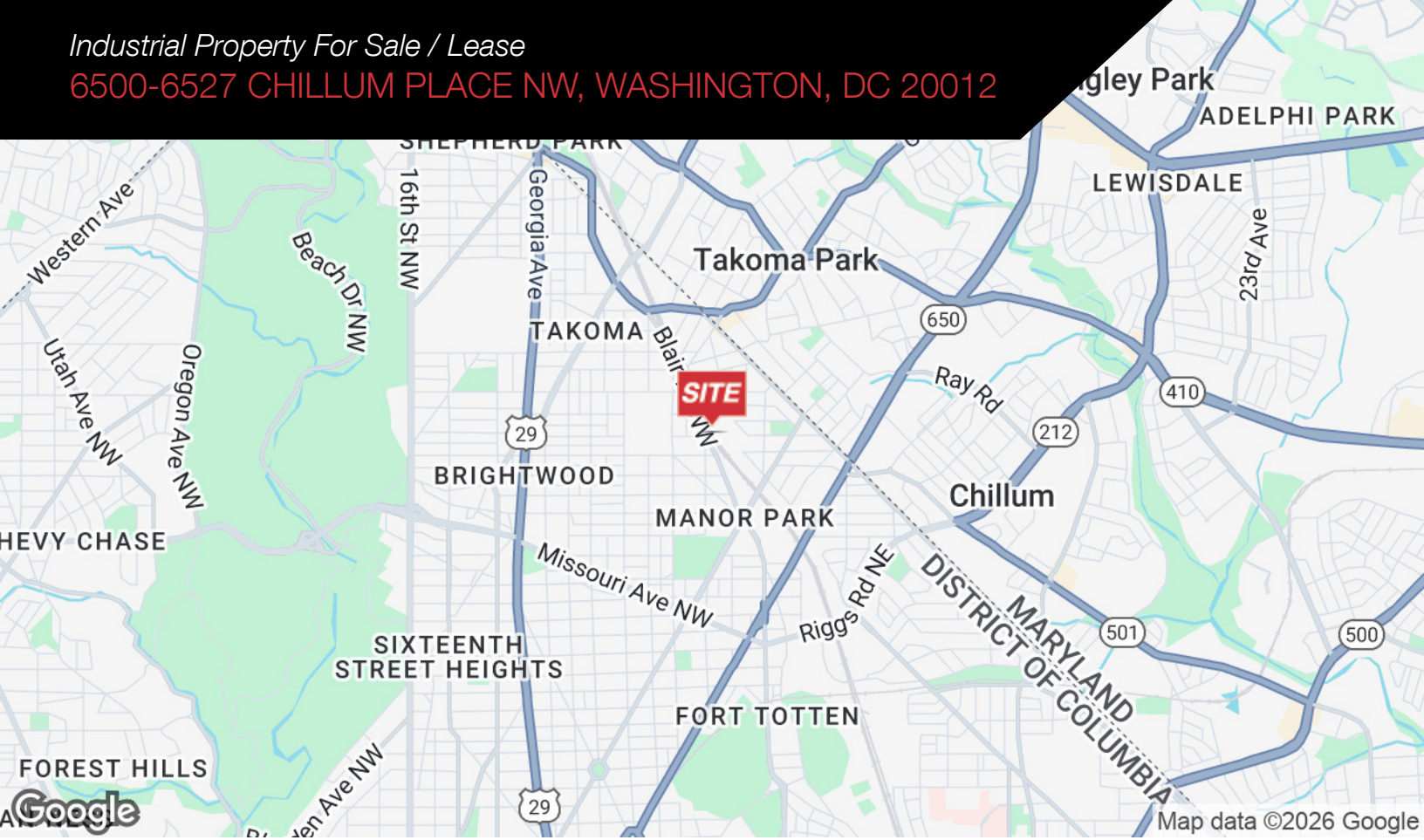
301.918.2913 | pburleigh@naimichael.com

301.918.2912 | bthompson@naimichael.com

The information contained herein has been given to us by the owner of the property or other sources we deem reliable. We have no reason to doubt its accuracy, but we do not guarantee it. Floor plans, site plans and other graphic representations of this property have been reduced and reproduced, and are not necessarily to scale. All information should be verified prior to purchase or lease.

Industrial Property For Sale / Lease

6500-6527 CHILLUM PLACE NW, WASHINGTON, DC 20012



Naimichael

PETER BURLEIGH

BRADY THOMPSON

301.918.2913 | pburleigh@naimichael.com

301.918.2912 | bthompson@naimichael.com

The information contained herein has been given to us by the owner of the property or other sources we deem reliable. We have no reason to doubt its accuracy, but we do not guarantee it. Floor plans, site plans and other graphic representations of this property have been reduced and reproduced, and are not necessarily to scale. All information should be verified prior to purchase or lease.