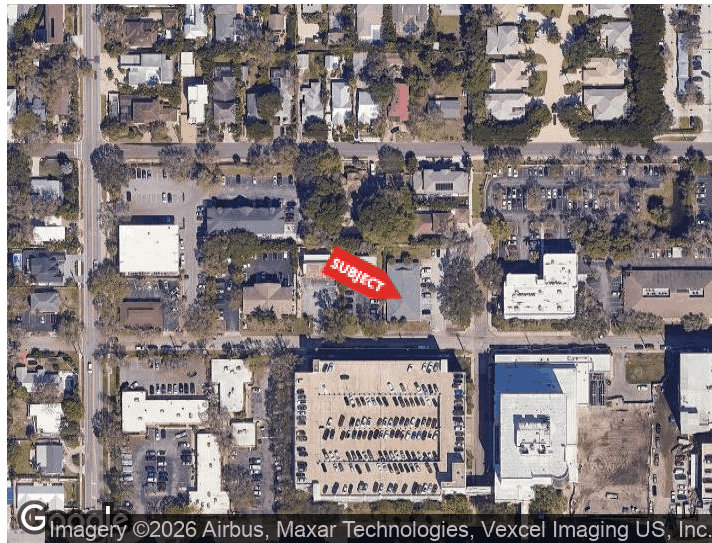




**MEDICAL OFFICE NEAR SARASOTA MEMORIAL**  
 1895 FLOYD ST  
 SARASOTA, FLORIDA 34239

**PROPERTY HIGHLIGHTS**

- Functional medical layout with multiple exam rooms
- Private doctor’s office
- Reception and waiting area
- Nurse stations and open treatment area
- Break room and support spaces
- 5 restrooms
- Prime location next to Sarasota Memorial Hospital
- Easy access to US-41



Imagery ©2026 Airbus, Maxar Technologies, Vexcel Imaging US, Inc.

DEMOGRAPHICS	0.25 MILES	0.5 MILES	1 MILE
Total Households	235	1,193	4,504
Total Population	463	2,344	9,239
Average HH Income	\$130,570	\$115,831	\$148,793

For More Information

**BRIAN SEIDEL**  
 CCIM - Broker Associate  
 941 544 2970  
 brian@americanpropertygroup.com

# MEDICAL OFFICE NEAR SARASOTA MEMORIAL



## OFFERING SUMMARY

Lease Rate:	\$27.50 SF/yr (NNN)
Building Size:	4,544 SF
Available SF:	3,236 SF
Lot Size:	22,133 SF
Number of Units:	2
Year Built:	1981
Zoning:	OPB

## PROPERTY OVERVIEW

American Property Group of Sarasota, Inc. presents 1895 Floyd St, Sarasota, FL

Property Type: Medical Office

Available Space: ±3,236 SF

This ±3,236 SF medical office suite offers a well-designed layout ideal for a variety of healthcare or professional office users. Located within a highly desirable medical corridor, the space is positioned adjacent to Sarasota Memorial Hospital with convenient access to US-41, providing excellent accessibility for both patients and staff.

The existing buildout is tailored for medical use, allowing for a seamless transition for a new tenant.

## BRIAN SEIDEL

CCIM - Broker Associate  
941.544.2970  
brian@americanpropertygroup.com



# MEDICAL OFFICE NEAR SARASOTA MEMORIAL



**BRIAN SEIDEL**

CCIM - Broker Associate  
941.544.2970  
brian@americanpropertygroup.com

**AMERICAN  
PROPERTY GROUP**  
OF SARASOTA, INC.

# MEDICAL OFFICE NEAR SARASOTA MEMORIAL

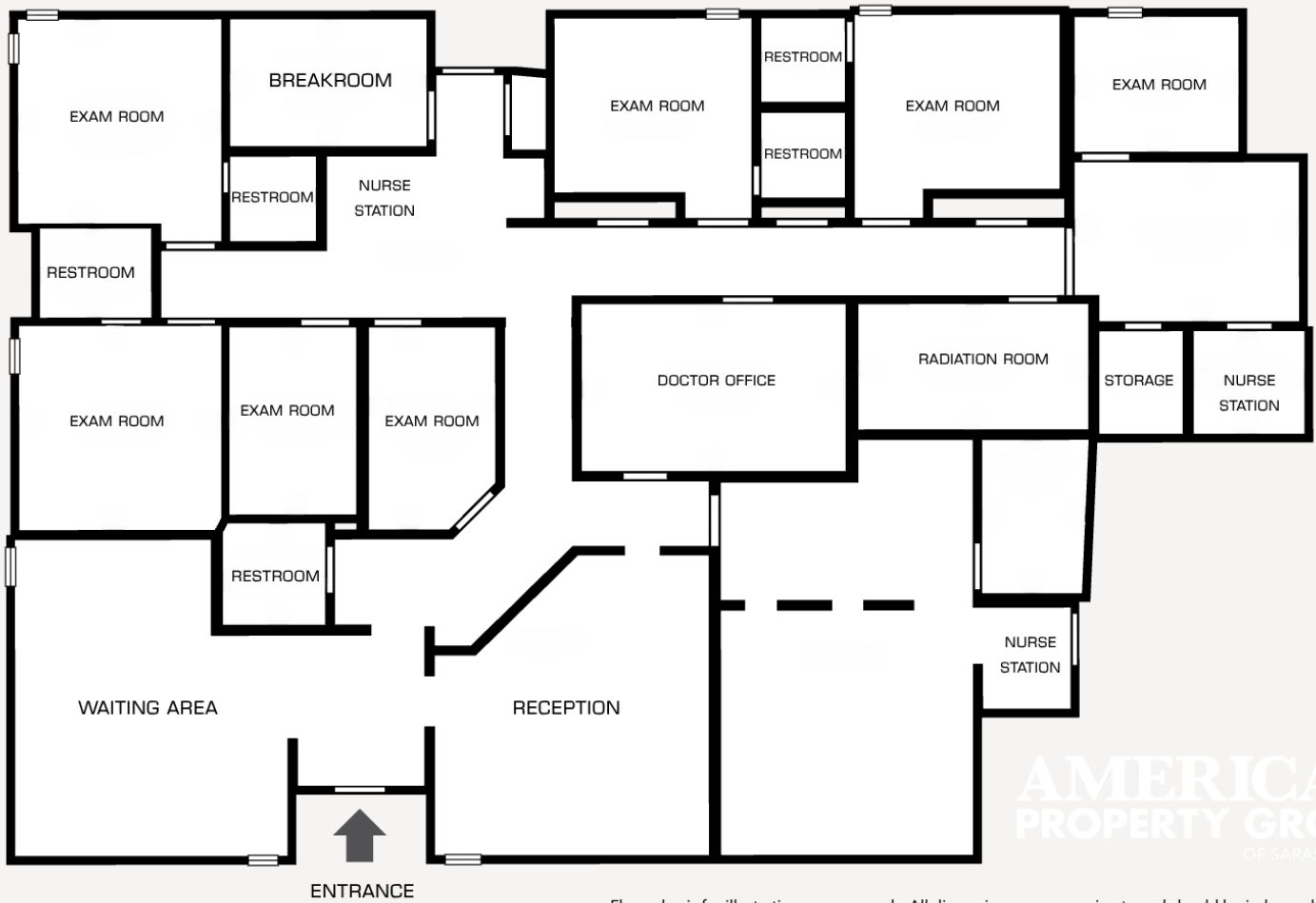


**BRIAN SEIDEL**

CCIM - Broker Associate  
941.544.2970  
brian@americanpropertygroup.com

**AMERICAN PROPERTY GROUP**  
OF SARASOTA, INC.

# MEDICAL OFFICE NEAR SARASOTA MEMORIAL



**AMERICAN  
PROPERTY GROUP**  
OF SARASOTA, INC.

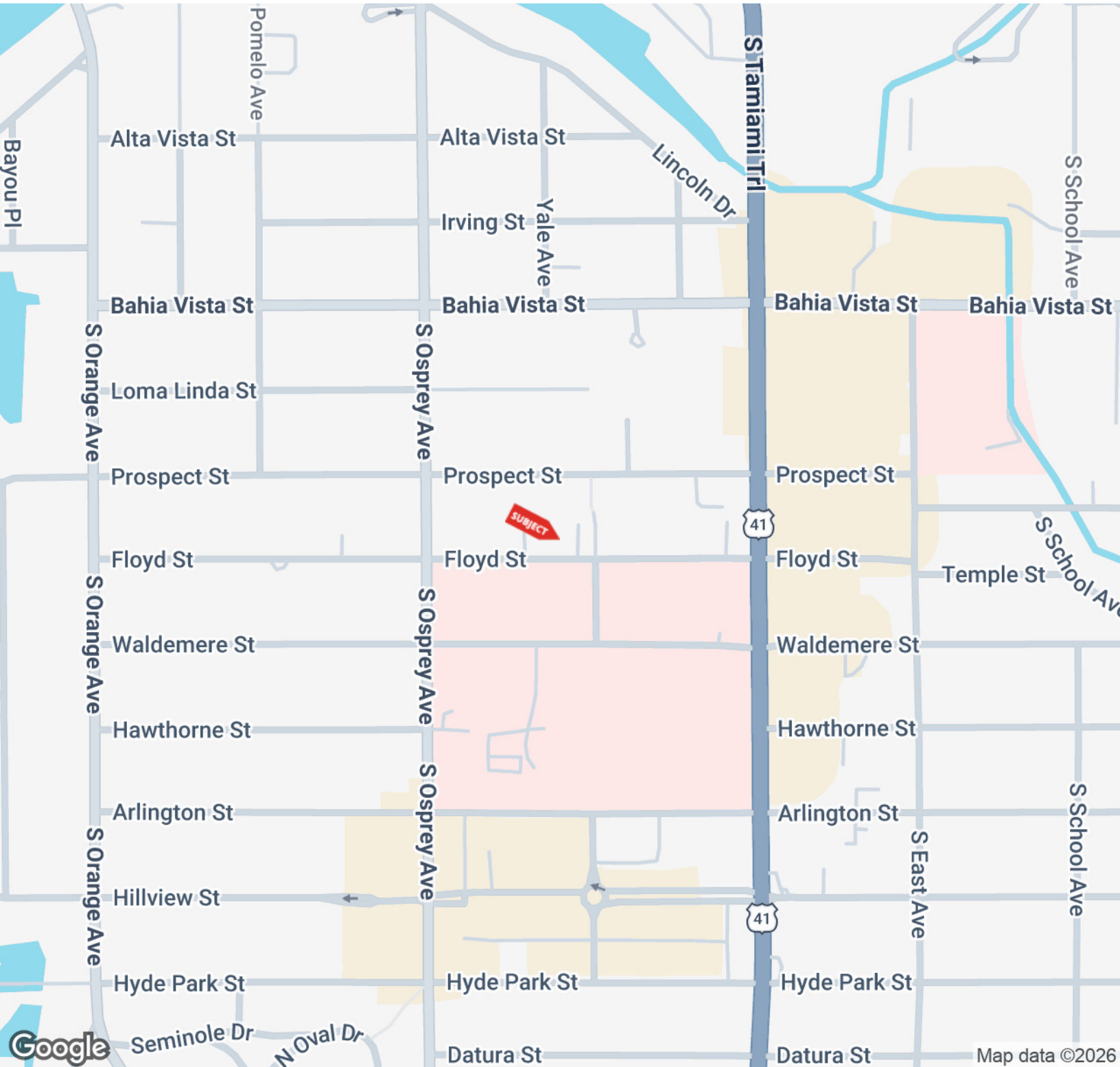
Floor plan is for illustrative purposes only. All dimensions are approximate and should be independently verified.

**BRIAN SEIDEL**

CCIM - Broker Associate  
941.544.2970  
brian@americanpropertygroup.com

**AMERICAN  
PROPERTY GROUP**  
OF SARASOTA, INC.

# MEDICAL OFFICE NEAR SARASOTA MEMORIAL

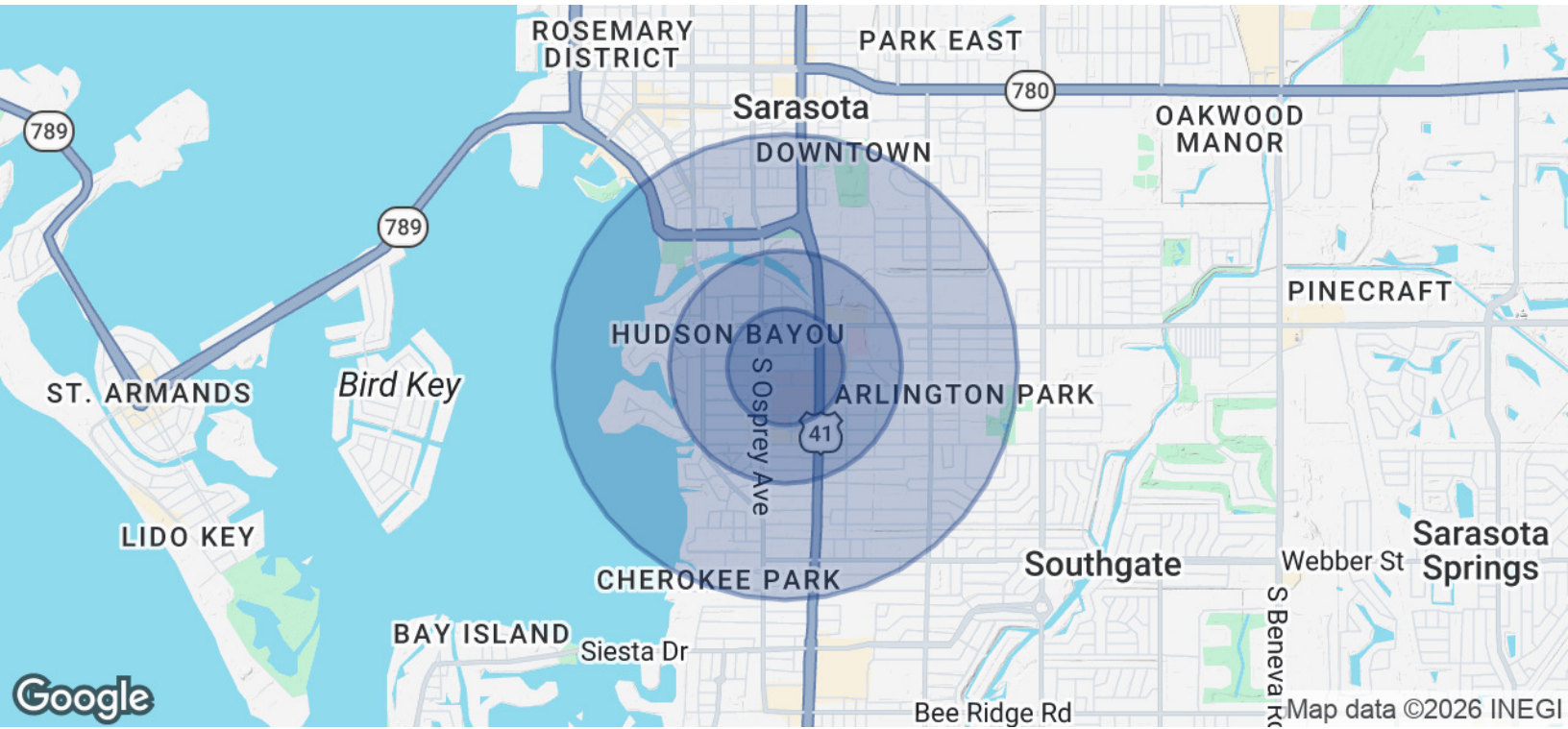


**BRIAN SEIDEL**

CCIM - Broker Associate  
941.544.2970  
brian@americanpropertygroup.com

**AMERICAN  
PROPERTY GROUP**  
OF SARASOTA, INC.

# MEDICAL OFFICE NEAR SARASOTA MEMORIAL



POPULATION	0.25 MILES	0.5 MILES	1 MILE
Total Population	463	2,344	9,239
Average Age	61.7	58.9	56.0
Average Age (Male)	60.5	55.4	51.9
Average Age (Female)	62.4	61.4	59.6
HOUSEHOLDS & INCOME	0.25 MILES	0.5 MILES	1 MILE
Total Households	235	1,193	4,504
# of Persons per HH	2.0	2.0	2.1
Average HH Income	\$130,570	\$115,831	\$148,793
Average House Value	\$803,676	\$639,423	\$811,997

2023 American Community Survey (ACS)

## BRIAN SEIDEL

CCIM - Broker Associate  
 941.544.2970  
 brian@americanpropertygroup.com

