

# 350 SANSOME STREET

FINANCIAL DISTRICT SUB-MARKET

Onsite lobby attendant  
Full HVAC  
Operable Windows  
Onsite Parking  
Amenity Rich Location  
Steps to BART +  
Embarcadero Center

PRIVATE OFFICES FOR LEASE

PLUG & PLAY SUBLEASE

JAY D. SHAFFER  
(415) 407-3997  
jshaffer@coltoncommercialsf.com  
License #: 01444640



AVAILABLE NOW

# 350 SANSOME STREET

SPACE HIGHLIGHTS:



Shared Reception

SUITE 400

SIZE: 1-4 Private Offices

AVAILABILITY: Now

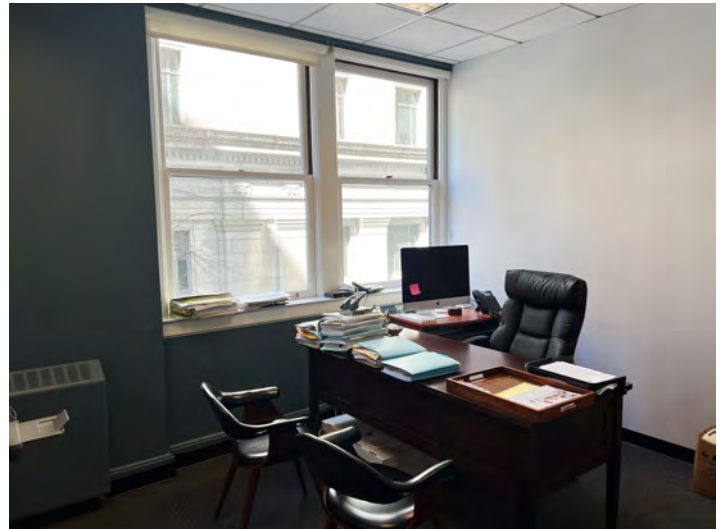
TERM: 1+ Year

RENTAL RATE: Negotiable, Fully Serviced

1 - 3 private offices for Sublease for a 1-year term (or potentially longer). Shared use of reception and kitchen. Master Tenant are various law firms. Newly improved space with great natural light, HVAC and operable windows. Onsite parking garage.



Shared Kitchen



# 350 SANSOME STREET

FLOOR PLAN

## SUITE 400

1 - 4 private offices.  
Shared use of reception and kitchen.  
Newly improved space,  
Great natural light,  
HVAC and operable windows.  
Onsite parking garage.

