

# 1155 S. BLACK HORSE PIKE

Williamstown, NJ



## PREMIER RETAIL SPACE AVAILABLE

**+/- 18,900 SF**

CAN BE SUBDIVIDED

### PROPERTY FEATURES

- Price: Call for information
- Ideal for indoor recreational facility, training facility, fitness center, specialty fitness concepts, retail showrooms (furniture/interior design retailer) & more
- Monument signage
- Dock & drive-in for retailer showroom/warehouse hybrid
- Abundant parking
- Situated directly off heavily traveled Black Horse Pike (+/-16,000 VPD)
- Located within nationally anchored retail corridor



# PROPERTY PHOTOS



The foregoing information was furnished to us by sources which we deem to be reliable, but no warranty or representation is made as to the accuracy thereof. Subject to correction of errors, omissions, change of price, prior sale or withdrawal from market without notice.



**Mike Scanzano**  
Executive Vice President  
856.465.6637  
mike.scanzano@wolfcre.com

**Corey Hassman**  
Vice President  
856.261.5812  
corey.hassman@wolfcre.com



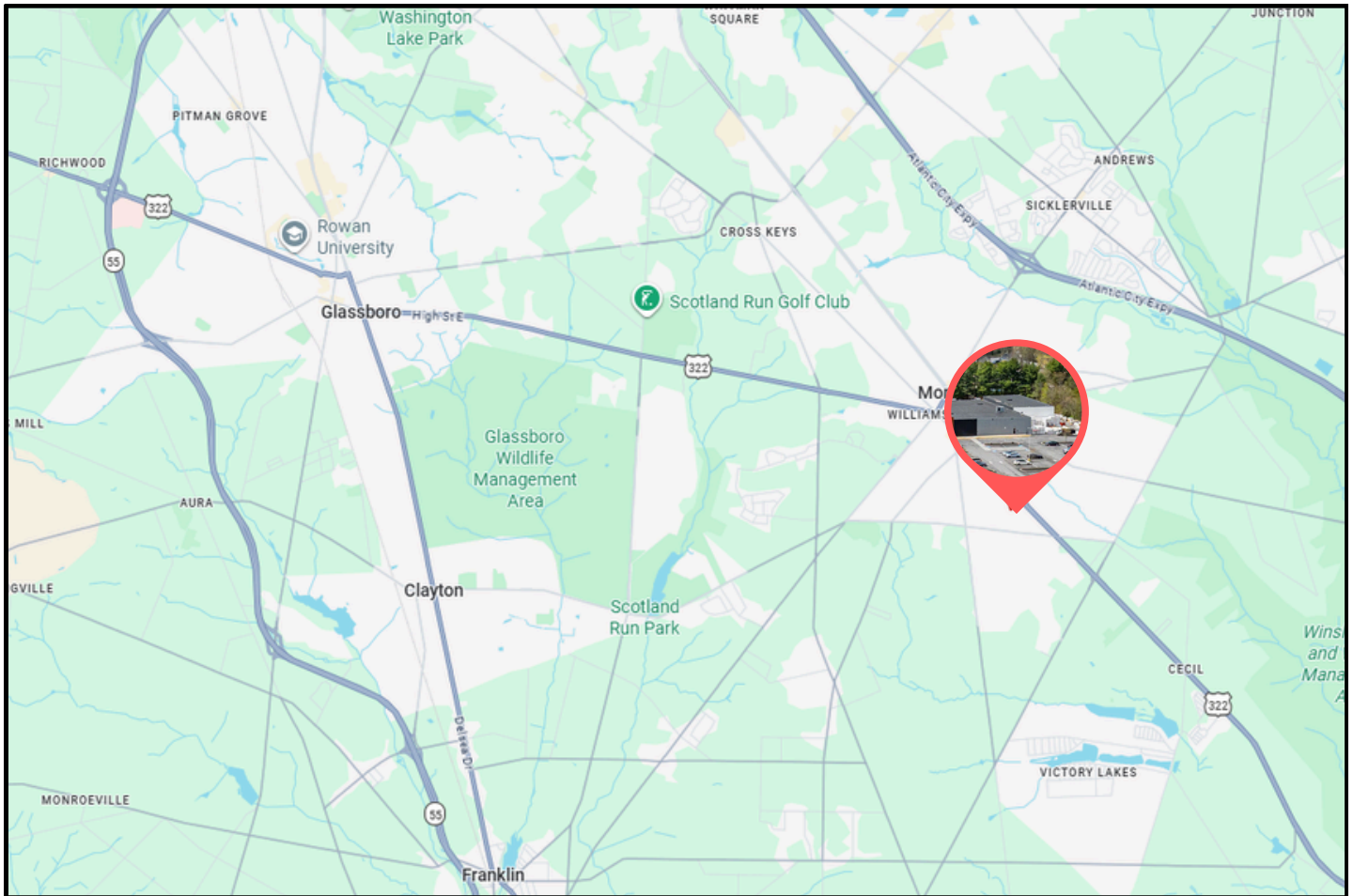
# SITE PLAN

## BLACK HORSE PIKE



The foregoing information was furnished to us by sources which we deem to be reliable, but no warranty or representation is made as to the accuracy thereof. Subject to correction of errors, omissions, change of price, prior sale or withdrawal from market without notice.

# LOCAL MAP



## DISTANCES

AC Expressway	3.5 miles
Route 42	3 miles
US 322	.1 miles
Route 55	6 miles
Route 73	10 miles
I-295	12 miles

## HEALTHCARE

*\*ALL WITHIN A 3 MILE RADIUS\**

Virtua Health  
 Inspira Health  
 Jefferson Health  
 AtlantiCare

## RETAILERS, ENTERTAINMENT & RESTAURANTS

*\*ALL WITHIN A 3 MILE RADIUS\**

Target	Applebee's
Walmart	Chick-fil-A
Home Depot	Texas Roadhouse
Lowe's	Olive Garden
ShopRite	Panera Bread
Aldi	Library IV
Kohl's	Ash & Oak
Monster Mini Golf	
Bowlero	
Scotland Run	
Regal Cinema	

The foregoing information was furnished to us by sources which we deem to be reliable, but no warranty or representation is made as to the accuracy thereof. Subject to correction of errors, omissions, change of price, prior sale or withdrawal from market without notice.



**Mike Scanzano**  
 Executive Vice President  
 856.465.6637  
 mike.scanzano@wolfcre.com

**Corey Hassman**  
 Vice President  
 856.261.5812  
 corey.hassman@wolfcre.com

