




6,665 sq ft of fully fitted refurbished office space



FOUR MATTHEW PARKER STREET

Four Matthew Parker Street is a beautiful period listed property, it sits prominently in the corner of this quiet St James's Park street and is just moments away from  Westminster Abbey.


The building was comprehensively refurbished in 2016 and the exterior is currently undergoing refurbishment works which are due to finish in January 2023. The 2016 works included all new shower, changing and bike storage facilities, along with a full refurbishment of all the common parts.



FOUR
MATTHEW
PARKER
STREET

— LOCATION —

This central London borough is the location for some of the capital's most iconic tourist attractions, four Royal Parks and the city's largest and busiest shopping and recreational areas.

Getting in and out couldn't be easier with both Westminster and St James's Park underground stations just 500 metres from Matthew Parker Street, making this destination easily accessible via the District, Circle and Jubilee lines. The newly thriving retail and leisure destination of Victoria is a short 1  minute walk away.

Green Park
Station

Buckingham
Palace

St James's
Park

Victoria
Station

St James's Park
Station

FOUR
MATTHEW
PARKER
STREET

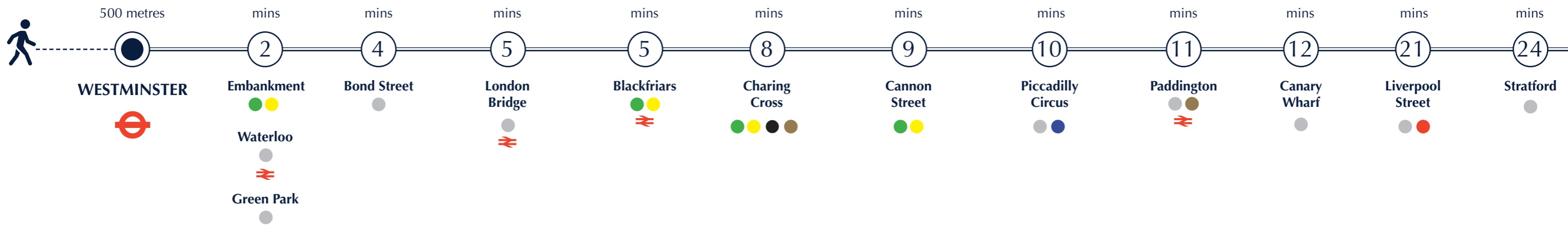
Westminster
Station

Westminster
Abbey

Palace of
Westminster

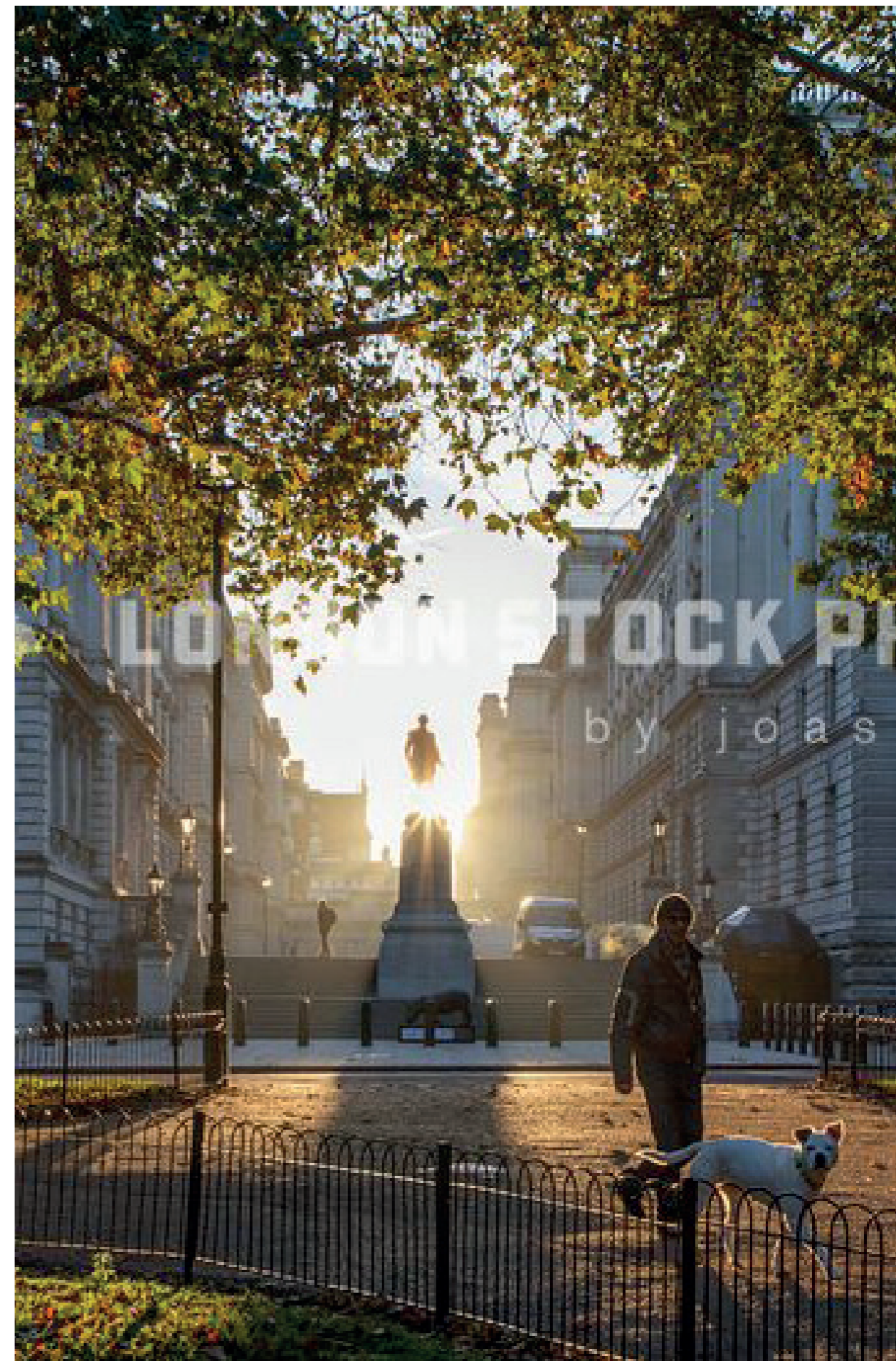


Victoria Street





— SW1 —



RETAIL, FOOD & DRINK

- 1 Browns Victoria
- 2 Franco Manca
- 3 M Victoria Street
- 4 Rail House Café
- 5 Roux at Parliament Square
- 6 Shake Shack
- 7 Space NK
- 8 Sticks'n'Sushi
- 9 The Cinnamon Club
- 10 Vagabond Wines
- 11 Zara
- 12 Ibérica Victoria
- 13 The Ivy Victoria
- 14 Bill's
- 15 Coco di Mama
- 16 Bone Daddies
- 17 Colosseo Restaurant
- 18 Flight Club
- 19 Pret A Manger
- 20 Stoke House

OFFICE OCCUPIERS

- 21 Adam Smith Institute
- 22 American Express
- 23 Boeing
- 24 Burberry
- 25 Capital Economics
- 26 Channel 4
- 27 DWS
- 28 Google
- 29 Intu Properties
- 30 Jimmy Choo
- 31 Jupiter Asset Management
- 32 L.E.K. Consulting
- 33 Phoenix Equity Partners
- 34 Rolls Royce
- 35 Tom Ford



GOVERNMENT DEPARTMENTS

- 36 British Chambers of Commerce
- 37 Central Hall Westminster
- 38 Companies House
- 39 Department of Business, Energy & Industrial Strategy
- 40 Department for Education
- 41 Department for Transport
- 42 Department for Work & Pensions
- 43 Foreign & Commonwealth Office
- 44 Her Majesty's Treasury
- 45 Houses of Parliament
- 46 Law Commission
- 47 Ministry of Defence
- 48 Ministry of Justice
- 49 The Supreme Court

HOTELS

- 50 Conrad London St James
- 51 Doubletree by Hilton
- 52 Hotel 41
- 53 St Ermin's Hotel
- 54 St James's Court Hotel
- 55 Taj 51 Buckingham Gate Suites
- 56 The Goring
- 57 The Rubens at the Palace
- 58 Z Hotel

— THE — BUILDING

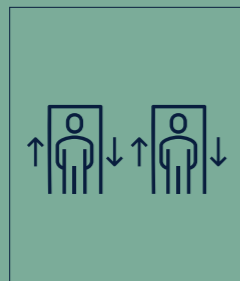
4 Matthew Parker Street offers occupiers the perfect balance between period architectural features and modern office amenity.

The building sits behind its own private gated courtyard and was comprehensively refurbished in 2016.

We are marketing the entire second floor which totals 6,665 sq ft and will be offered as a refurbished, fully fitted unit.



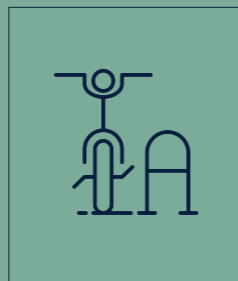
Managed Reception



Two passenger lifts



Shower facilities at lower ground floor level



Secure cycle storage





1000
MATTHEW
PARKER
STREET
5. Mr. Mark & Dorothy P.C.
4. Mr. Charles P.C.
3. The Business League Team
2. The Gifford Group plc
1. The Gifford Group plc
0. The Gifford Group plc
0. The Gifford Group plc
0. The Gifford Group plc

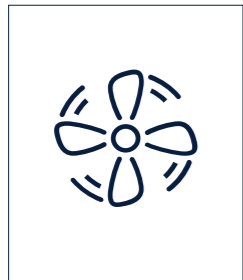




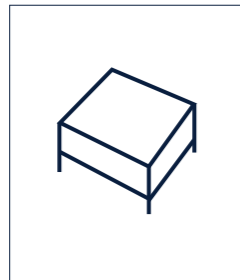


SECOND FLOOR

6,695 sq ft



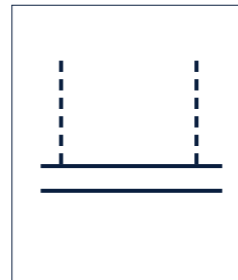
4-pipe fan coil air conditioning



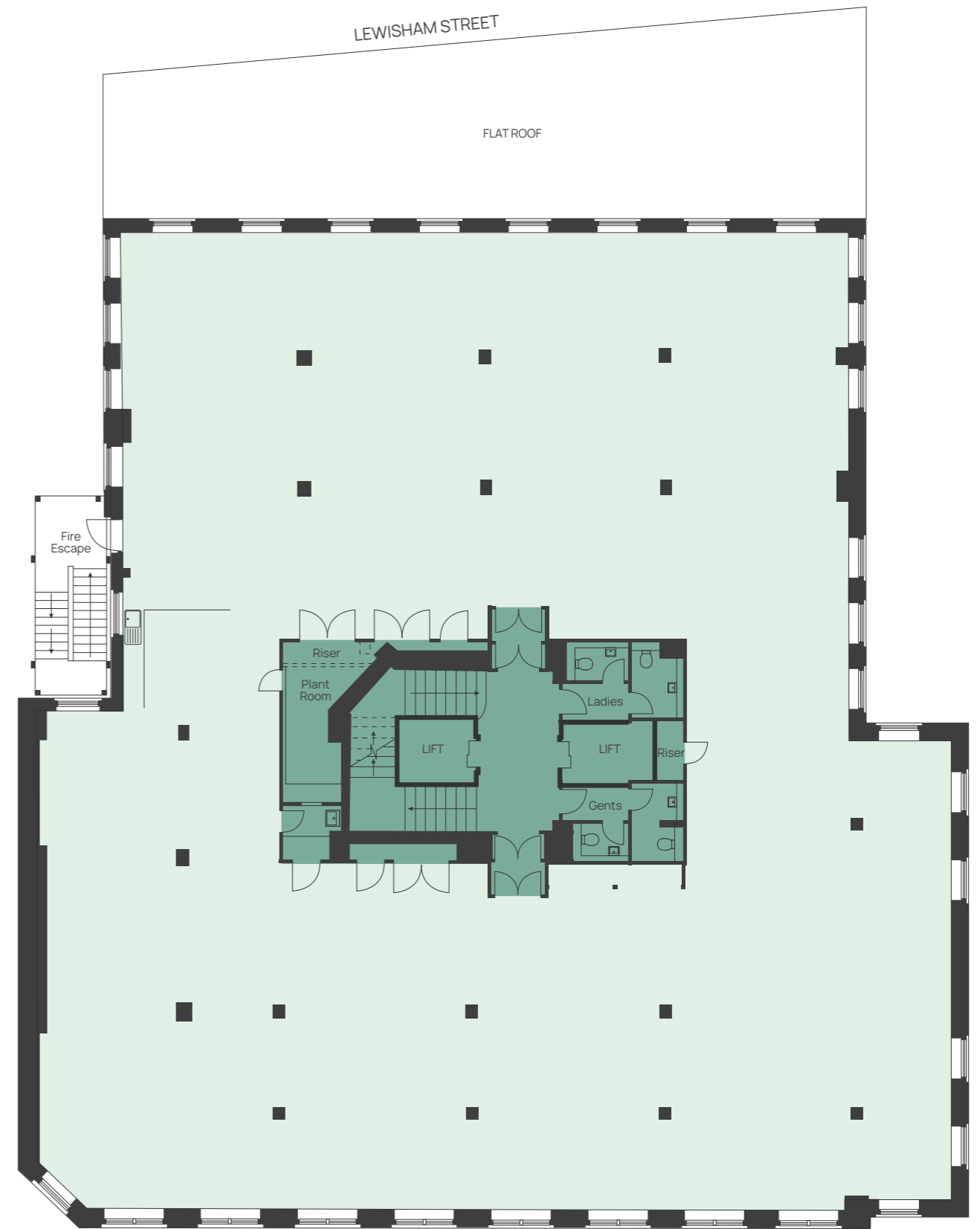
Full access raised floors



LED lighting



Metal tiled suspended ceiling



Office Core



All inquiries to be made through the sole agents:

Harry Cormack

020 7747 0144

07815 463 822

harry.cormack@levyrealestate.co.uk

Megan Carr

020 7747 0143

07896 899 798

megan.carr@levyrealestate.co.uk

www.levyrealestate.co.uk