



1,190 SF – 57,939 RSF CONTIGUOUS SPACE FOR LEASE

300 & 350 Eagleview Boulevard

EXTON, PA

300 Eagleview Boulevard

- First Floor – 19,861 RSF & 1,477 RSF
- 4.01/1,000 parking ratio
- Newly renovated lobby
- Grab n' Go cafe

350 Eagleview Boulevard

- First Floor – 1,190 RSF, 2,987 RSF & 11,030 RSF
- Second Floor – 21,267 RSF
- Third Floor – 25,642 RSF
- 5.59/1,000 parking ratio
- Newly renovated lobby

For information, please contact:

Jim Dugan

Executive Managing Director

t 610-879-4513

james.dugan@nmrk.com

Jeff Mack

Executive Managing Director

t 610-755-6960

jeff.mack@nmrk.com

Sean Donnelly

Associate

t 610-755-6936

sean.donnelly@nmrk.com

1000 Continental Drive
Suite 200
King of Prussia, PA 19406
t 610-265-0600
**Licensed in Pennsylvania as
Newmark Real Estate**

NEWMARK

300 & 350 Eagleview Boulevard

1,190 SF – 21,267 SF AVAILABLE FOR LEASE



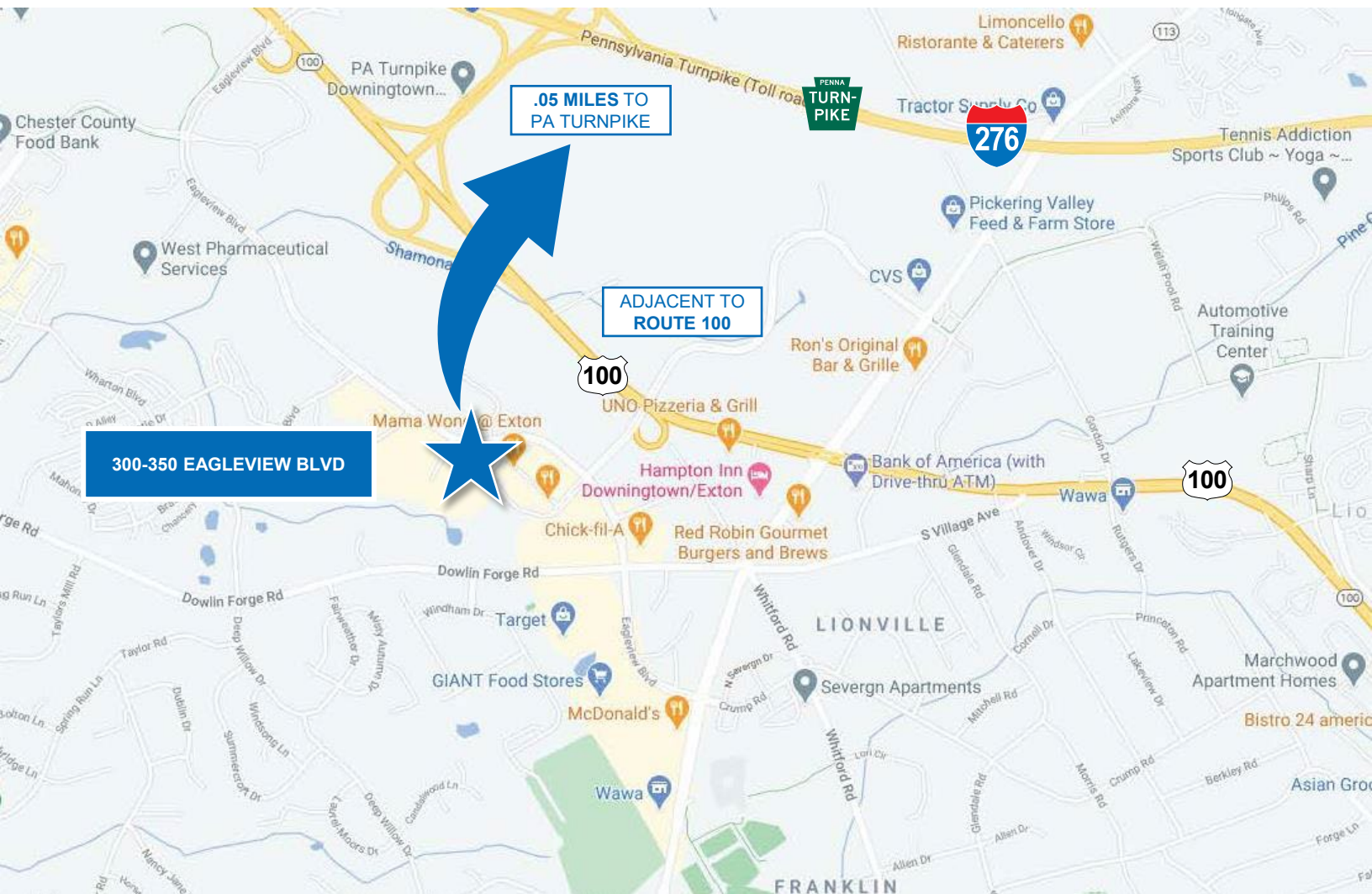
SUPERIOR AMENITY-RICH SUBURBAN ENVIRONMENT

Unique amenity-rich environment including an abundance of retail walkable amenities, multi-family communities and much more only minutes from the properties.



TRANSIT-ORIENTED LOCATION

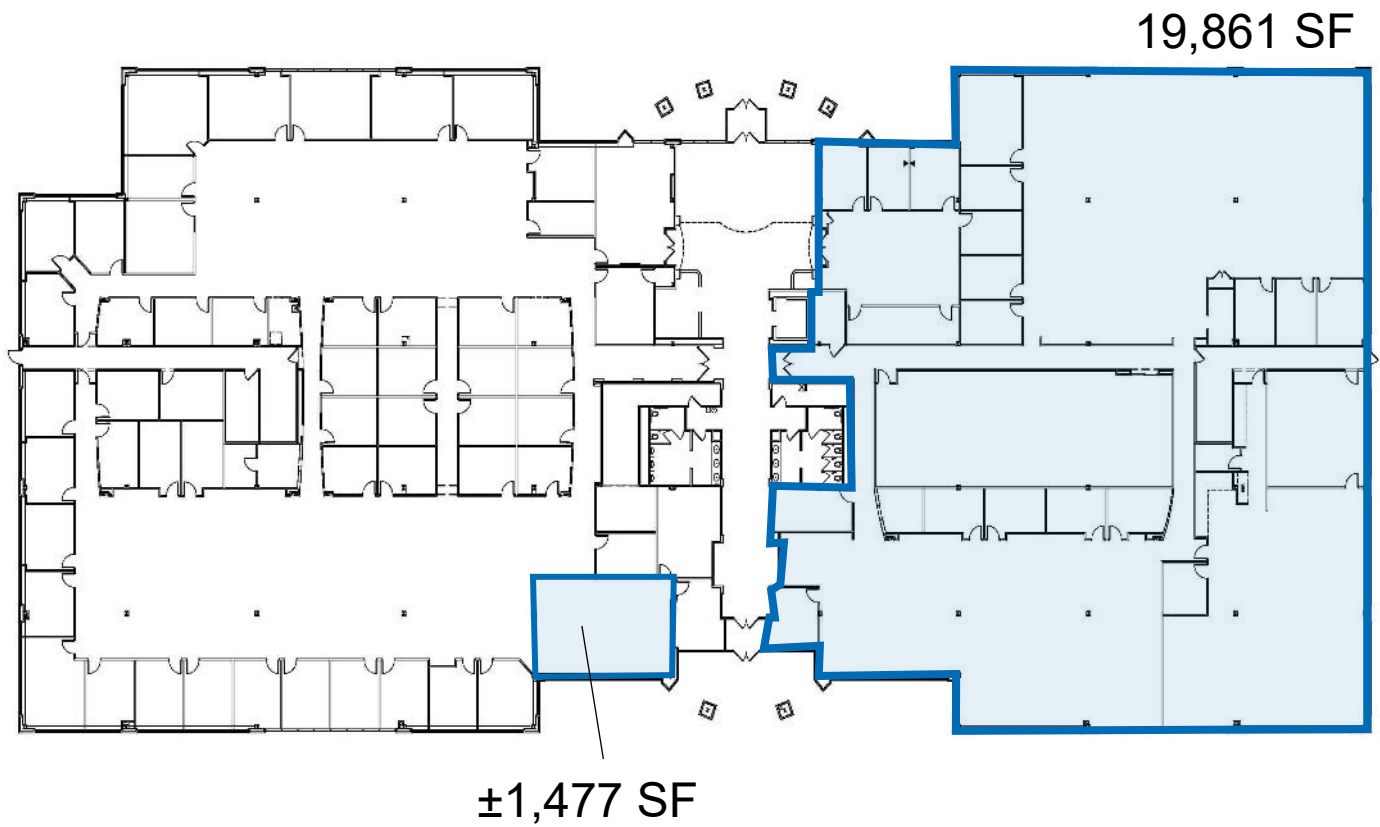
Prominently located with the region's most traversed thoroughfares nearby, offering swift connections to the entire Greater Philadelphia area, with the Pennsylvania Turnpike (Interstate 276) Interchange less than one mile away.



300 Eagleview Boulevard

1,477 SF – 19,861 SF AVAILABLE FOR LEASE

1ST FLOOR AVAILABILITIES



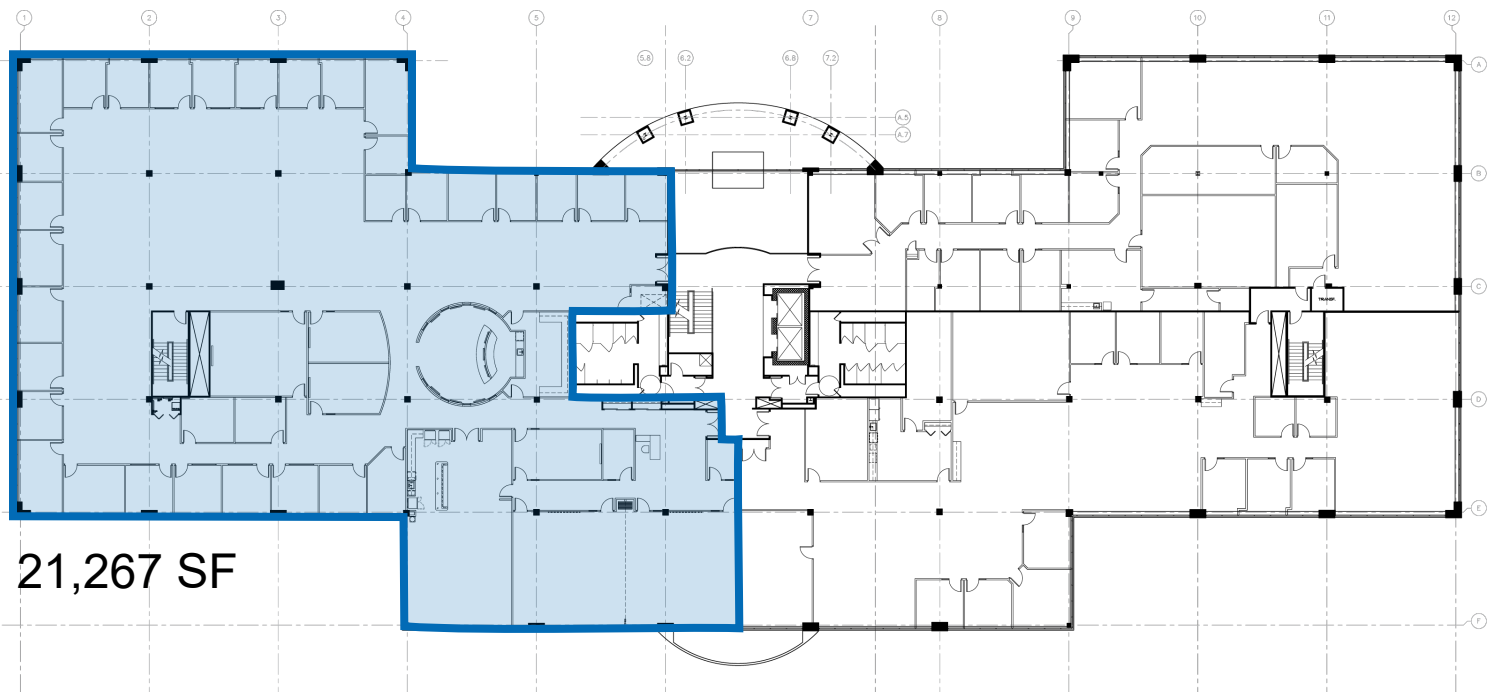
350 Eagleview Boulevard

1,190 SF – 21,267 SF AVAILABLE FOR LEASE

1ST FLOOR AVAILABILITY



2ND FLOOR AVAILABILITY

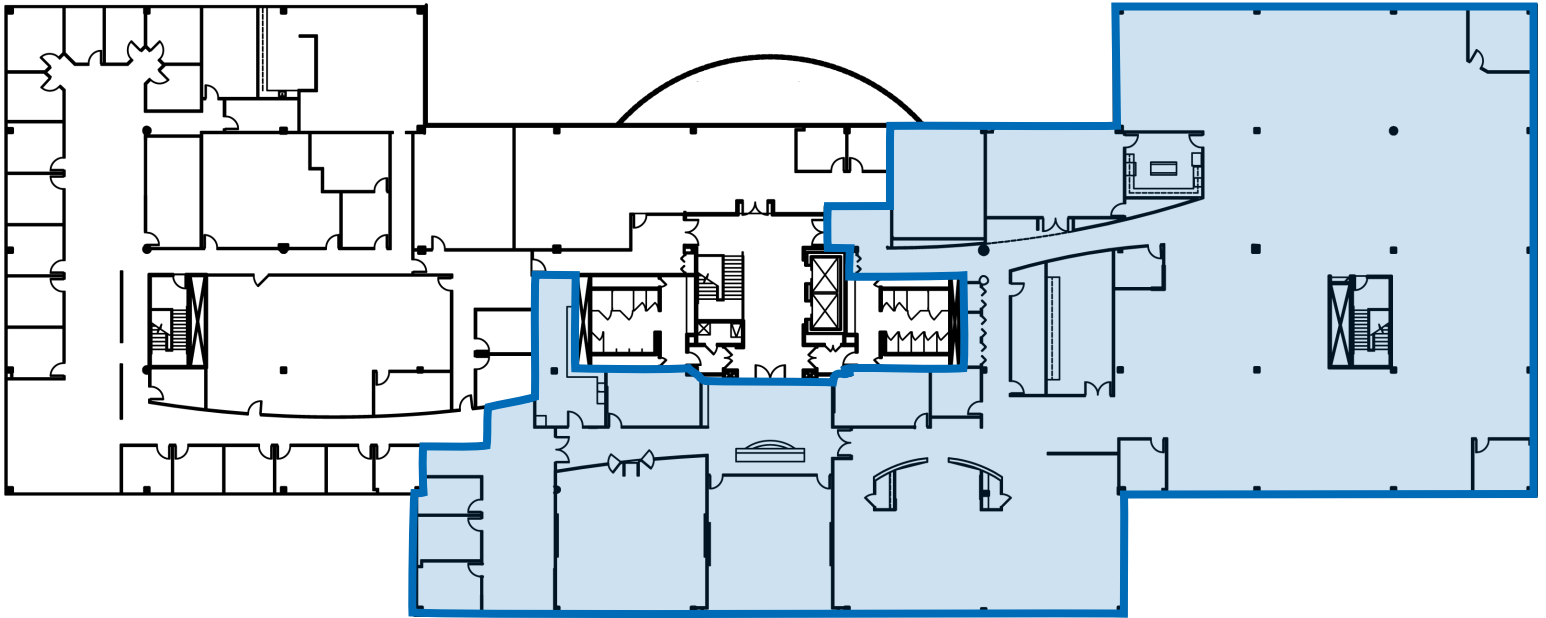


350 Eagleview Boulevard

25,642 SF AVAILABLE FOR LEASE

3rd FLOOR AVAILABILITY

25,642 SF

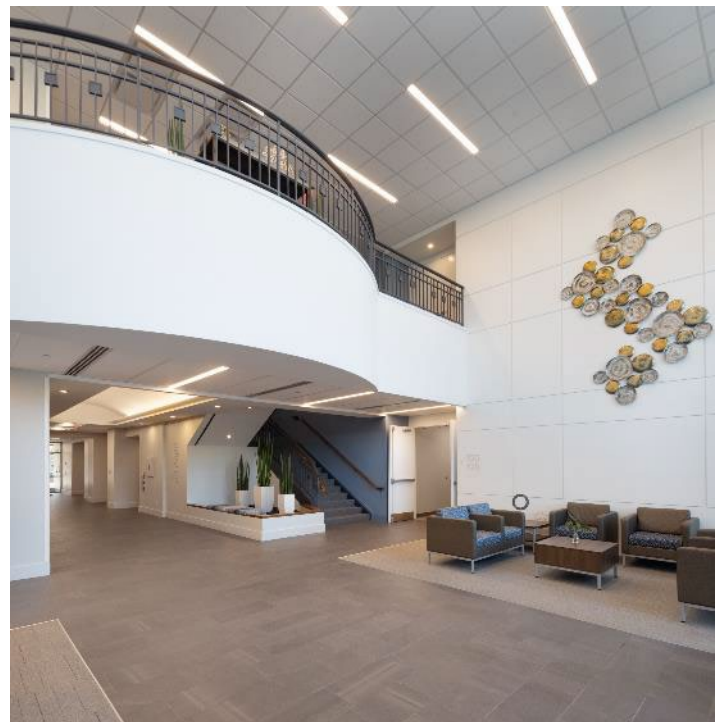


300 & 350 Eagleview Boulevard

1,190 SF – 21,267 SF AVAILABLE FOR LEASE



BUILDING 300: GRAB N' GO



NEWLY RENOVATED LOBBY