



# SOUTH PARK GROUP

[www.southparkgroup.com](http://www.southparkgroup.com)



## FOR LEASE

### CREATIVE OFFICE

8322 Beverly Boulevard  
Los Angeles, California 90048

Small creative office with concrete floors and exposed red brick walls. Beautiful courtyard patio. Centrally located between La Cienega and Crescent Heights, close to Blue Bottle Coffee, Kings Road, BH Juice Club, Joan's on Third, Toast, Izakaya and many other shops and eateries.

#### AVAILABLE SPACE

**Suite 303-B:** Approximately 475 rentable sqft

**Rate:** \$3.75 per sqft, Net of electric

#### JACK RAVAN

Tel. 323.782.1270

E. [jackravan@southparkgroup.com](mailto:jackravan@southparkgroup.com)

No. 00890189

#### ETHAN WEBSTER

Tel. 323.782.1260

E. [ethan@southparkgroup.com](mailto:ethan@southparkgroup.com)

No. 02225923

SOUTH PARK GROUP | 8322 Beverly Blvd., Suite 301 | Los Angeles, CA 90048

This information has been furnished by sources that we deem reliable, but for which we assume no liability. The information contained herein is given, in confidence, with the understanding that all negotiations pertaining to this property be handled through the submitting office. All measurements are approximate.

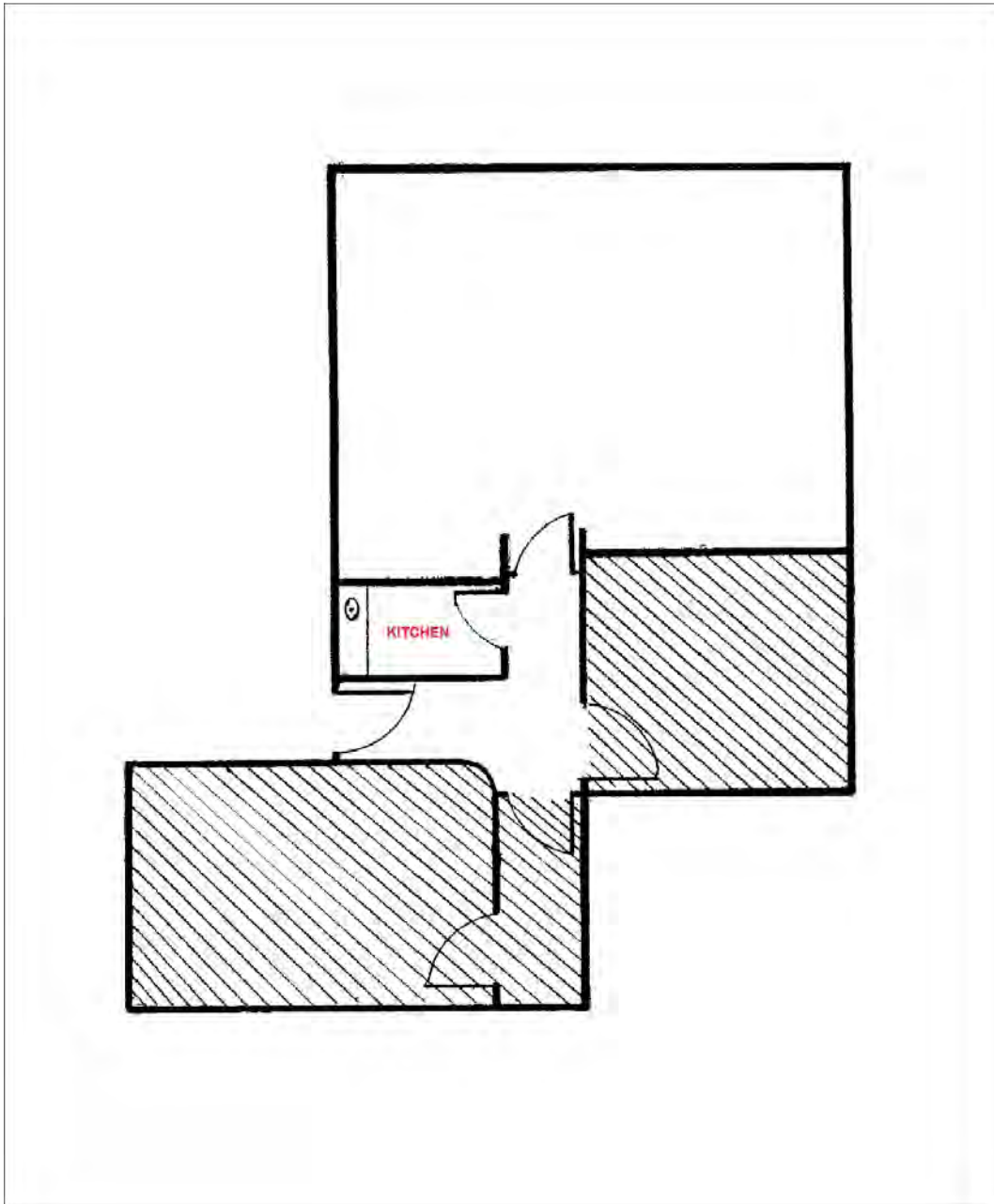


# SOUTH PARK GROUP

[www.southparkgroup.com](http://www.southparkgroup.com)

## FLOOR PLAN

8322 Beverly Blvd., Suite 303-B, Los Angeles, CA 90048



Not Drawn to Scale

**SOUTH PARK GROUP | 8322 Beverly Blvd., Suite 301 | Los Angeles, CA 90048**

This information has been furnished by sources that we deem reliable, but for which we assume no liability. The information contained herein is given, in confidence, with the understanding that all negotiations pertaining to this property be handled through the submitting office. All measurements are approximate.