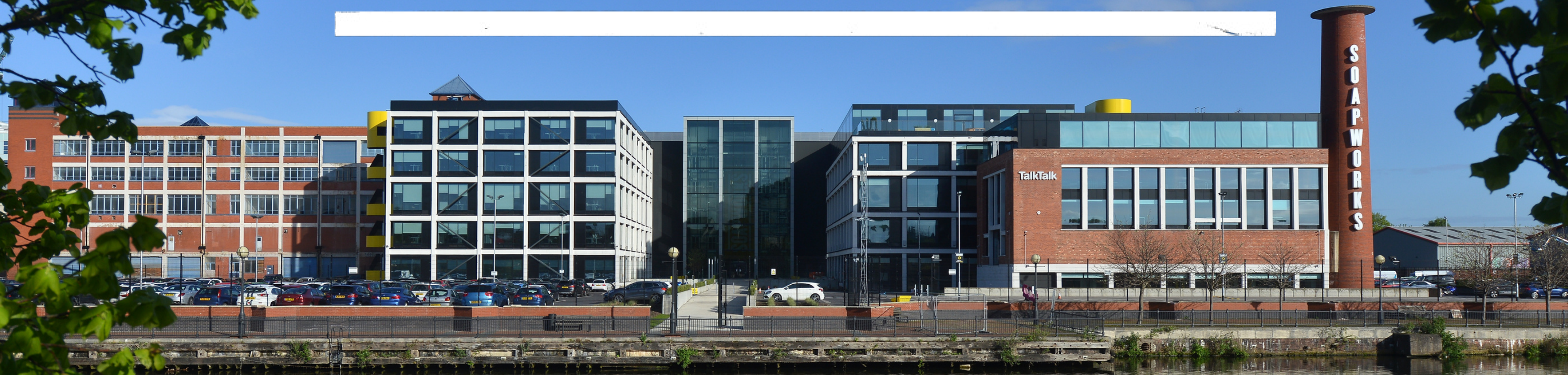


# SOAPWORKS



A BUILDING LIKE NO OTHER.

# CURATED, COMMUNITY-FOCUSED SPACE.

Be part of the Soapworks Scheme to gain access to a range of community activities, events and fundraisers.

With an on-site estates team keeping Soapworks at the forefront of Space as a Service, no two weeks are the same.



**UNMISSABLE EXPERIENCES.**



**ENRICHING TEAMS.**



**SEASONAL EVENTS.**

**COMMUNITY SCHEMES.**



**DOING GOOD.**

# AMENITIES GALORE.

**FOODWORKS CAFE**  
WITH  
**ON-SITE CHEF**



**FREE Bi-ANNUAL**  
**BIKE M.O.T.S**



**DEDICATED TO**  
**WELLBEING**



**POP-UPS AND**  
**GIVEAWAYS**



**COMMUNAL**  
**OUTDOOR**  
**SPACES**



**MONTHLY CAR**  
**VALET SERVICE**

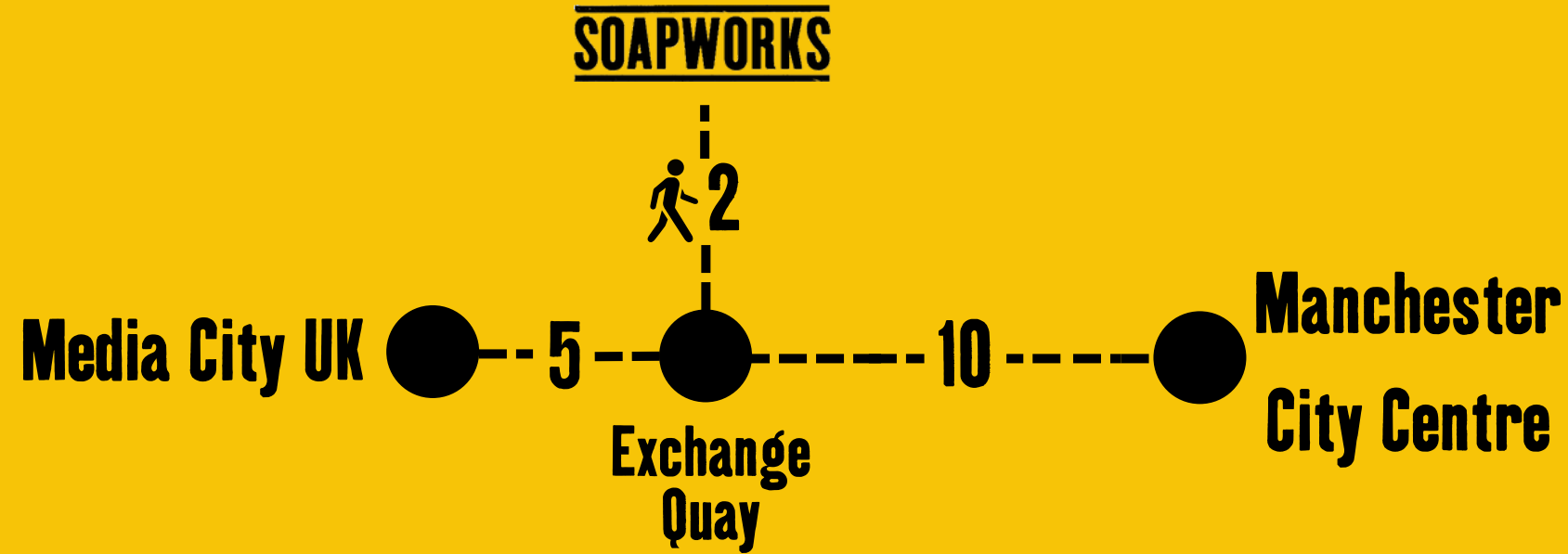


**S**  
**O**  
**A**  
**P**  
**W**  
**O**  
**R**  
**K**



# CONNECTED.

Promoting climate-friendly travel with exceptional transport links, secure bike storage, electric bikes/scooters for hire at the front gate and quality shower facilities.



**CITY CENTRE 10**  
**TRAIN STATION 10**

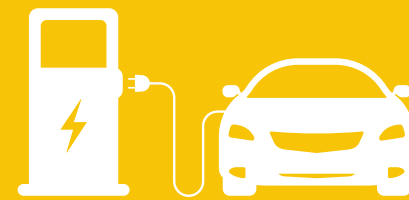


**CITY CENTRE 10**  
**TRAIN STATION 15**



**CITY CENTRE 5**  
**AIRPORT 15**  
**M60/M62 5**

**On-site hireable  
EV Chargers**

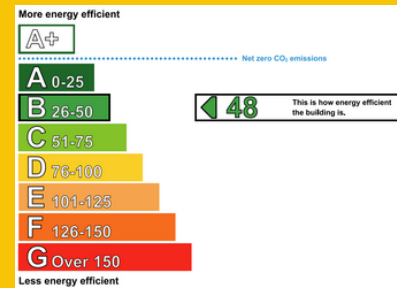


**SOAPWORKS**



**BICYCLE PARK**

# MORE THAN A BUILDING.



## ENVIRONMENTAL

EPC B ●

BREEAM EXCELLENT ●

PRO-ACTIVE ENERGY MONITORING SCHEME ●

SOLAR ENERGY EQ. TO 87 HOUSES COMING Q4 '23 ●

## COMMUNITY

LOCAL FOOTBALL TEAM SPONSORSHIP ●

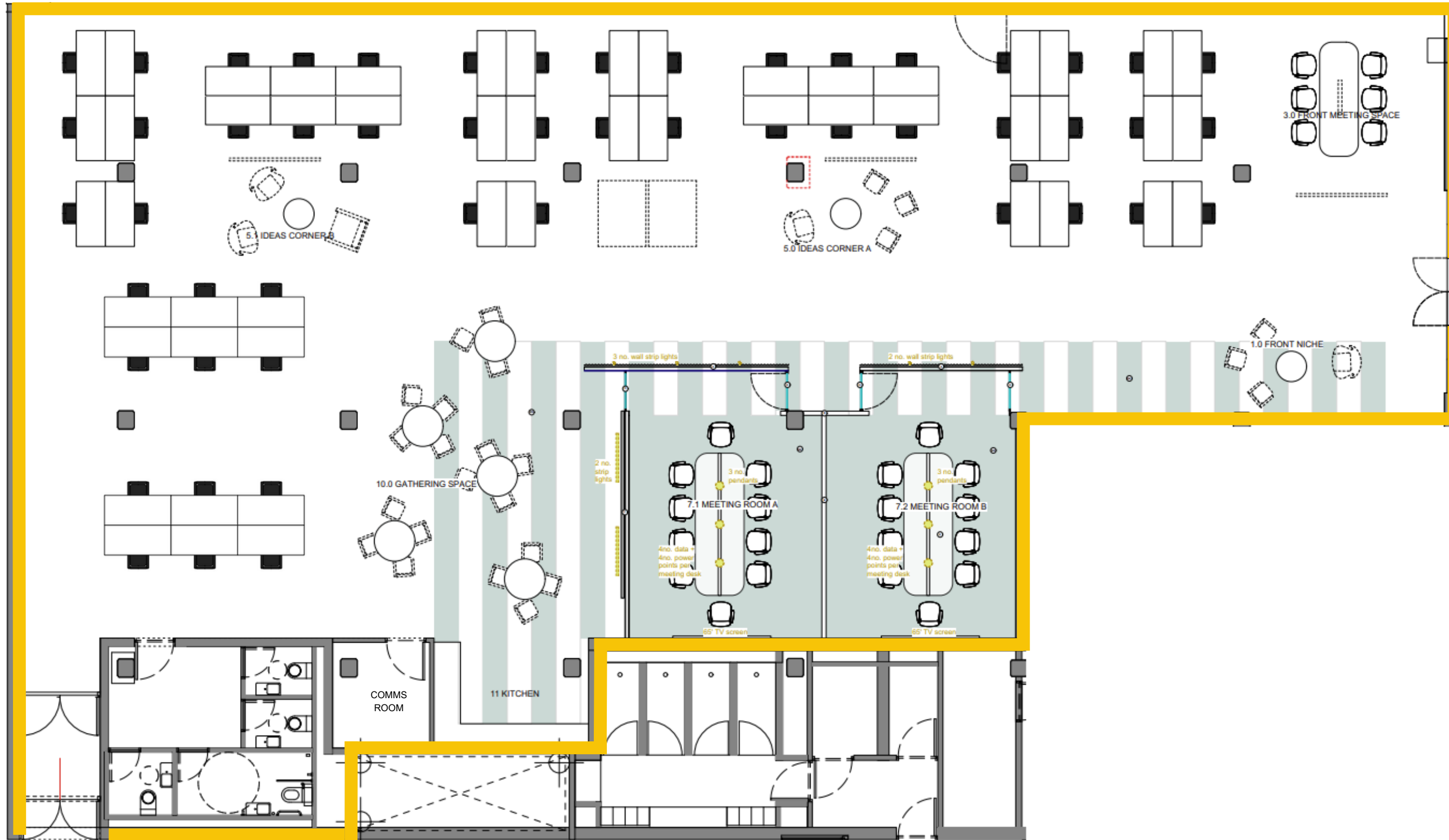
PROMOTING LOCAL BUSINESSES ●

SEASONAL DONATION DRIVES ●

DONATE 1000+ ITEMS OF AID EVERY YEAR ●

# SUITE B1- GF

**5593 sq ft.**  
**55 PERSON OFFICE**

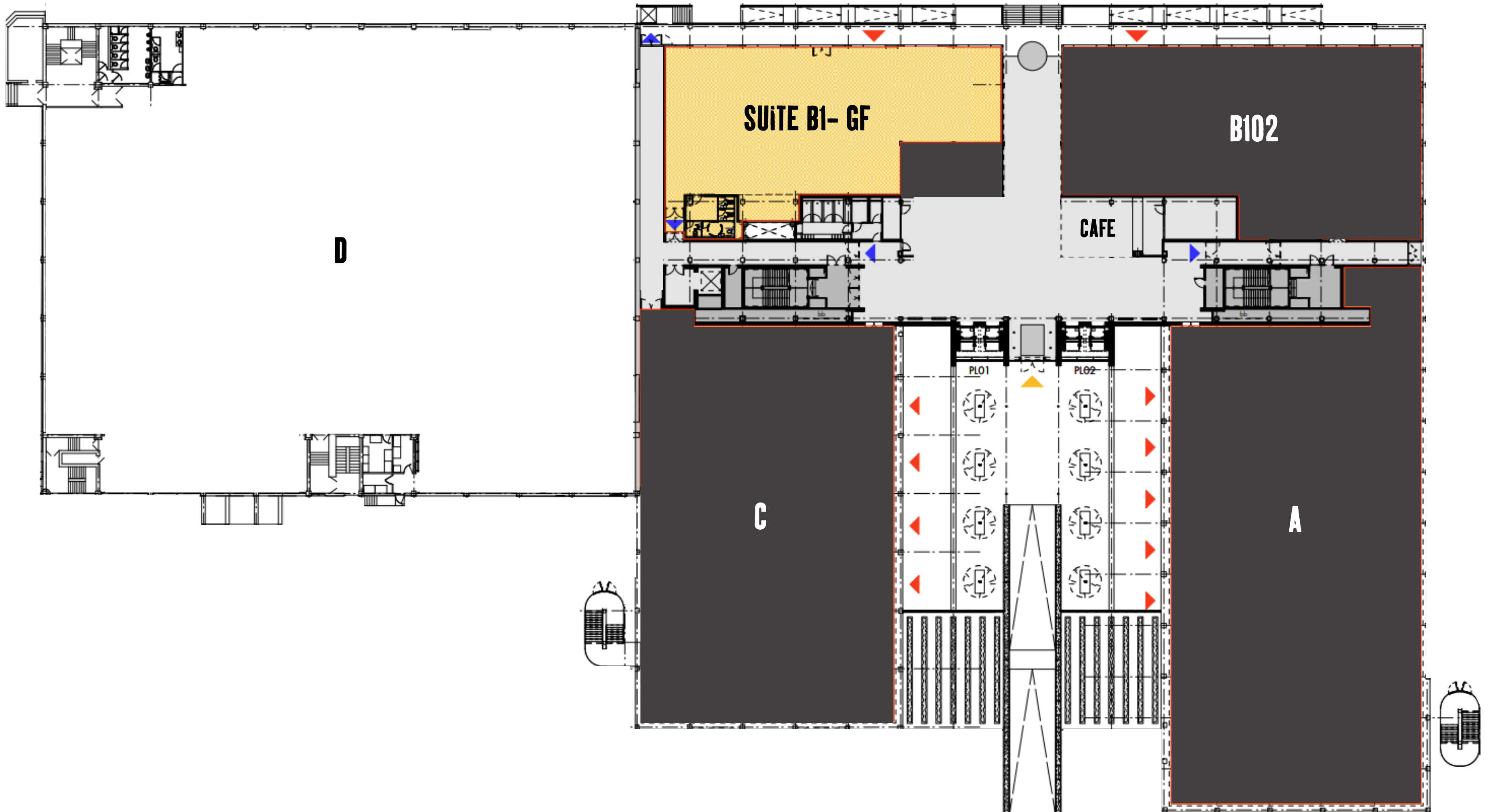


## Fit-out

- >> LG3 Lighting
- >> Demised VRF System
- >> Raised Access Floor
- >> 1:10
- >> Demised Toilets

## Potential Layout

- >> Suitable for 55 desks
- >> 2 x 10-Person Meeting Rooms
- >> 5 x Flexible Breakout Areas
- >> 4 x Demised Toilets
- >> Kitchen Area





**CURRENT LAYOUT**

