

555 E North Lane – Spring Mill Corporate Center
Conshohocken, PA

+/- 16,578 SF (Divisible) Sublease at Spring Mill Corporate Center

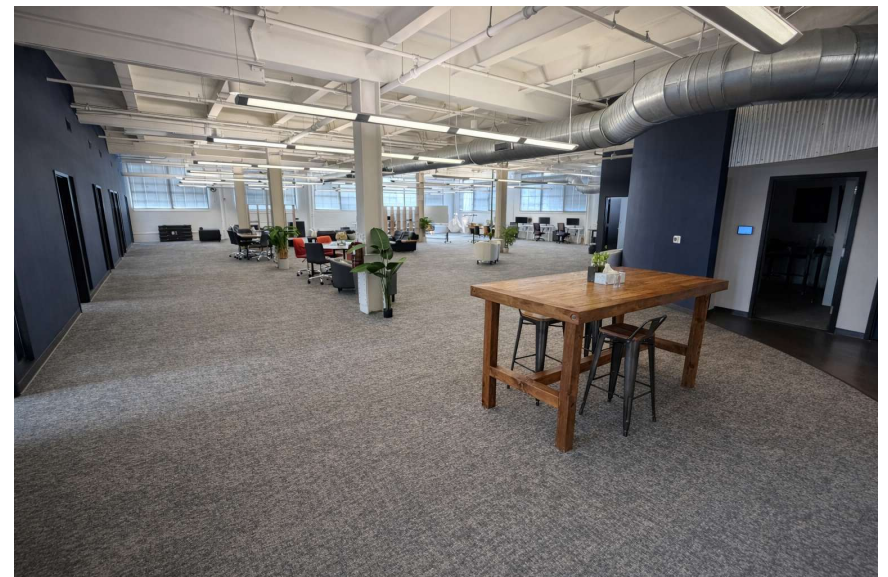
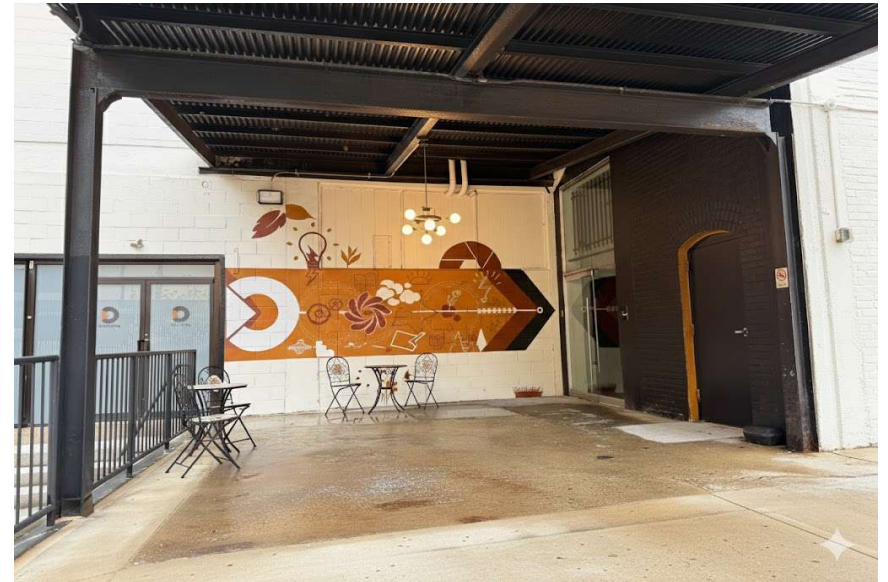
555 E North Lane (Spring Mill Corporate Center) - Sublease

BUILDING OVERVIEW

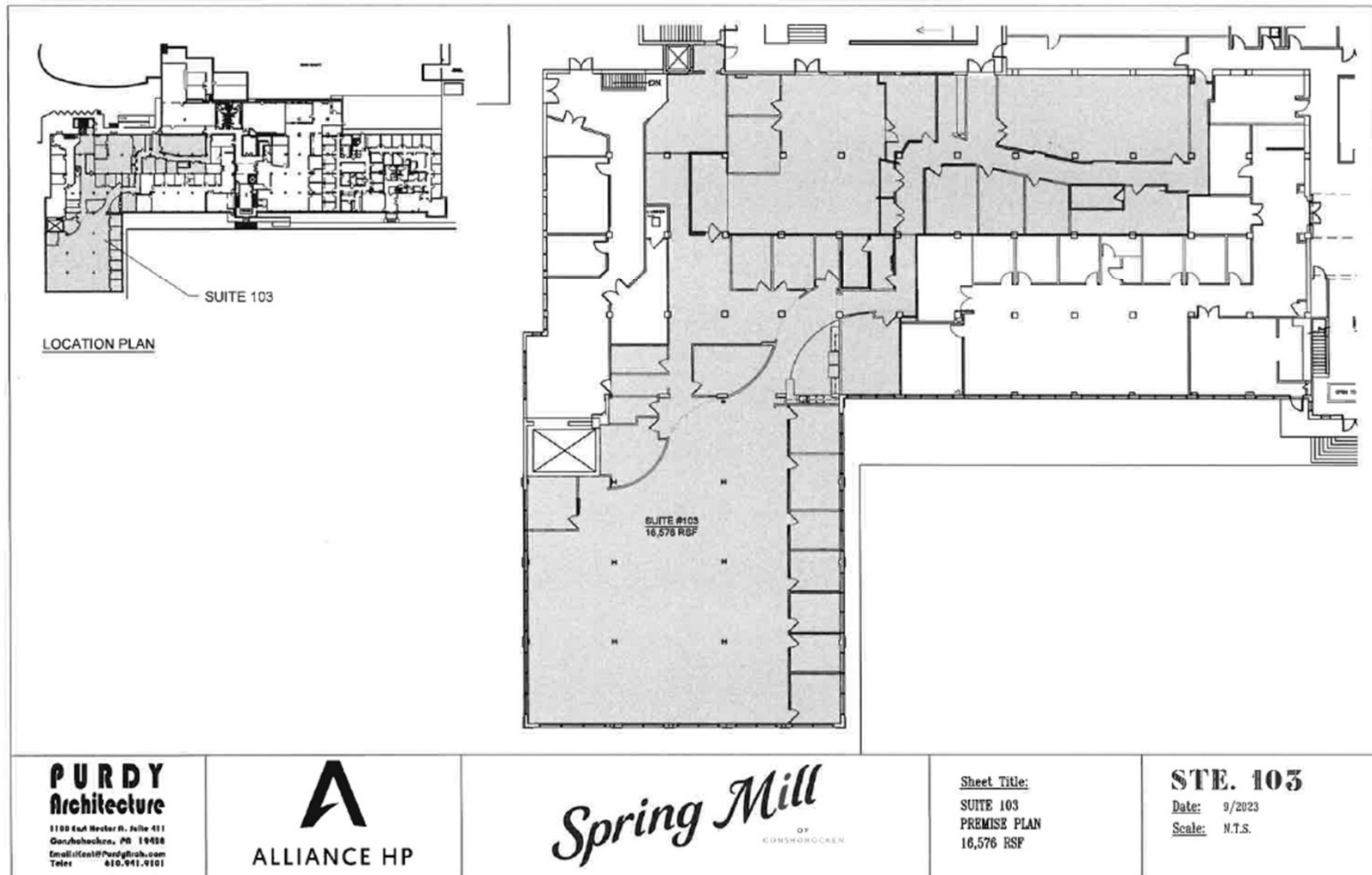
Spring Mill Corporate Center is a completely renovated property in suburban Philadelphia's most in-demand submarket, offering an ideal combination of office and warehouse space. On-site amenities include a café and catering services, fitness center, conference facilities, and bike and jogging paths, with convenient access to the SEPTA R6 Rail Line and nearby dining options within walking distance.

SUBLEASE HIGHLIGHTS

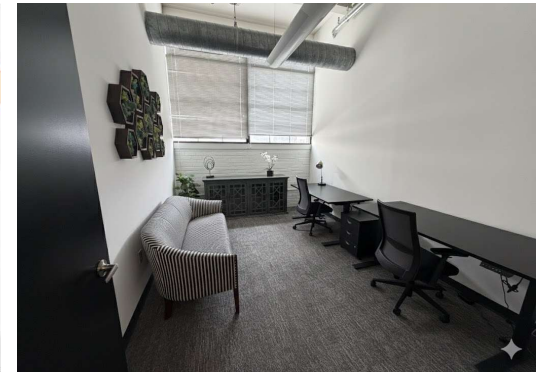
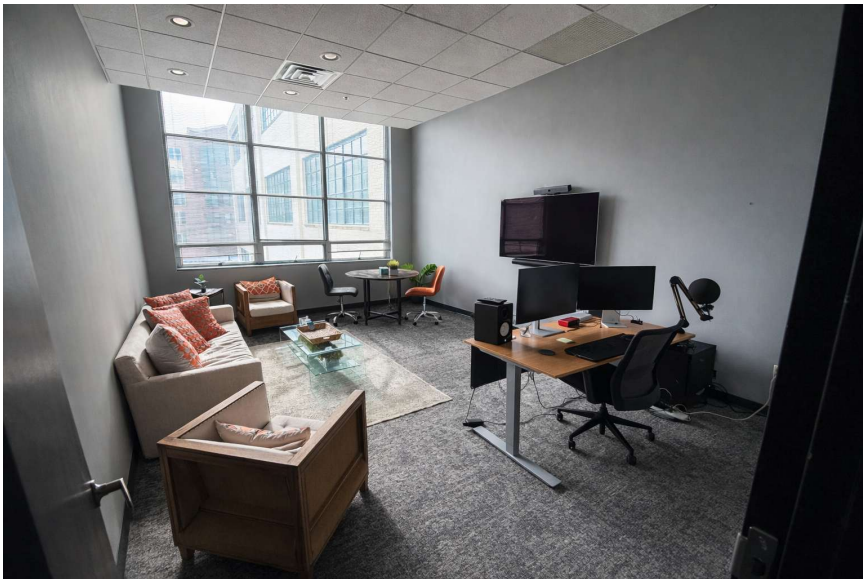
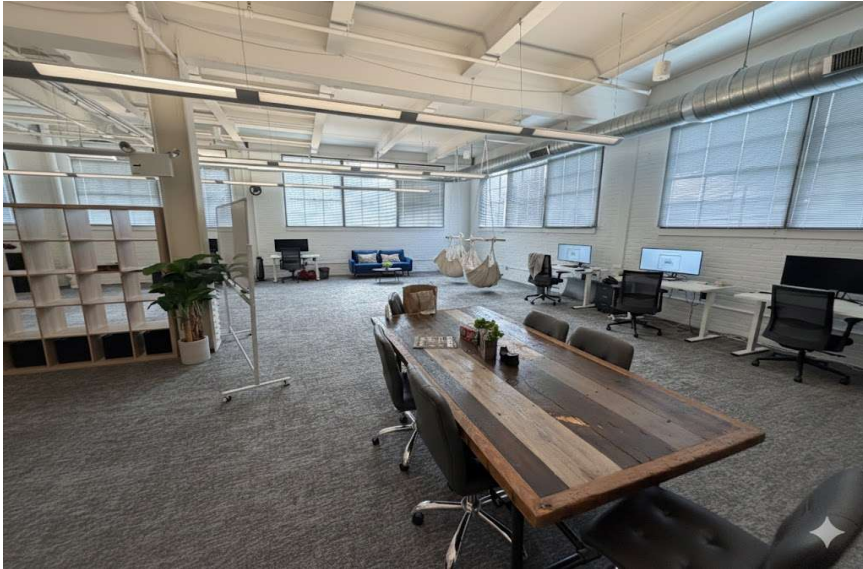
- Sublease opportunity +/- 16,578 SF (divisible)
- Existing furniture can be made available
- Lease expiration of 7/31/2027
- Asking rental rate of \$30.00/SF + Electric
- Access to own private entrance
- Minutes from I-76 and I-476
- Convenient access to regional rail
 - Spring Mill Station (SEPTA Regional Rail – Manayunk/Norristown Line)
 - Conshohocken Station (SEPTA Regional Rail – Manayunk/Norristown Line)



555 E North Lane (Suite 103) – Floor plan



555 E North Lane (Spring Mill Corporate Center) – Photos



FOR MORE INFORMATION
PLEASE CONTACT:

DAVID BUTERA
Tenant Representative
267-767-1100
dbutera@gola.com

DREW BUTERA
Tenant Representative
267-500-7820
drew@gola.com

GOLA CORPORATE REAL ESTATE, INC.

2490 Boulevard Of The Generals
Suite 100
Norristown, PA 19403
610-631-0333

www.gola.com

