

As exclusive agents, Signature Partners is proud to offer the following property for lease:

134 West 26th Street

Between Sixth & Seventh Avenues

Rental Rate \$39.00 / RSF

| <u>PREMISES</u> | <u>AREA</u> | <u>RENTAL RATE</u> | <u>ELECTRIC</u> | <u>ESCALATIONS</u> |
|-----------------|-------------------|--------------------|-----------------|--------------------|
| Part 4th Floor | Approx. 4,200 RSF | \$39.00 / RSF | Sub-Metered | 3% / RE taxes |



- 5 offices and glass wall conference rm.
- Large south-facing windows
- Tenant-controlled air-conditioning
- Wood floor, high ceiling

- Private bathrooms and pantry
- Landlord will modify for qualified tenant
- Flexible Term

Nearby Transportation:



www.signaturepartners.com

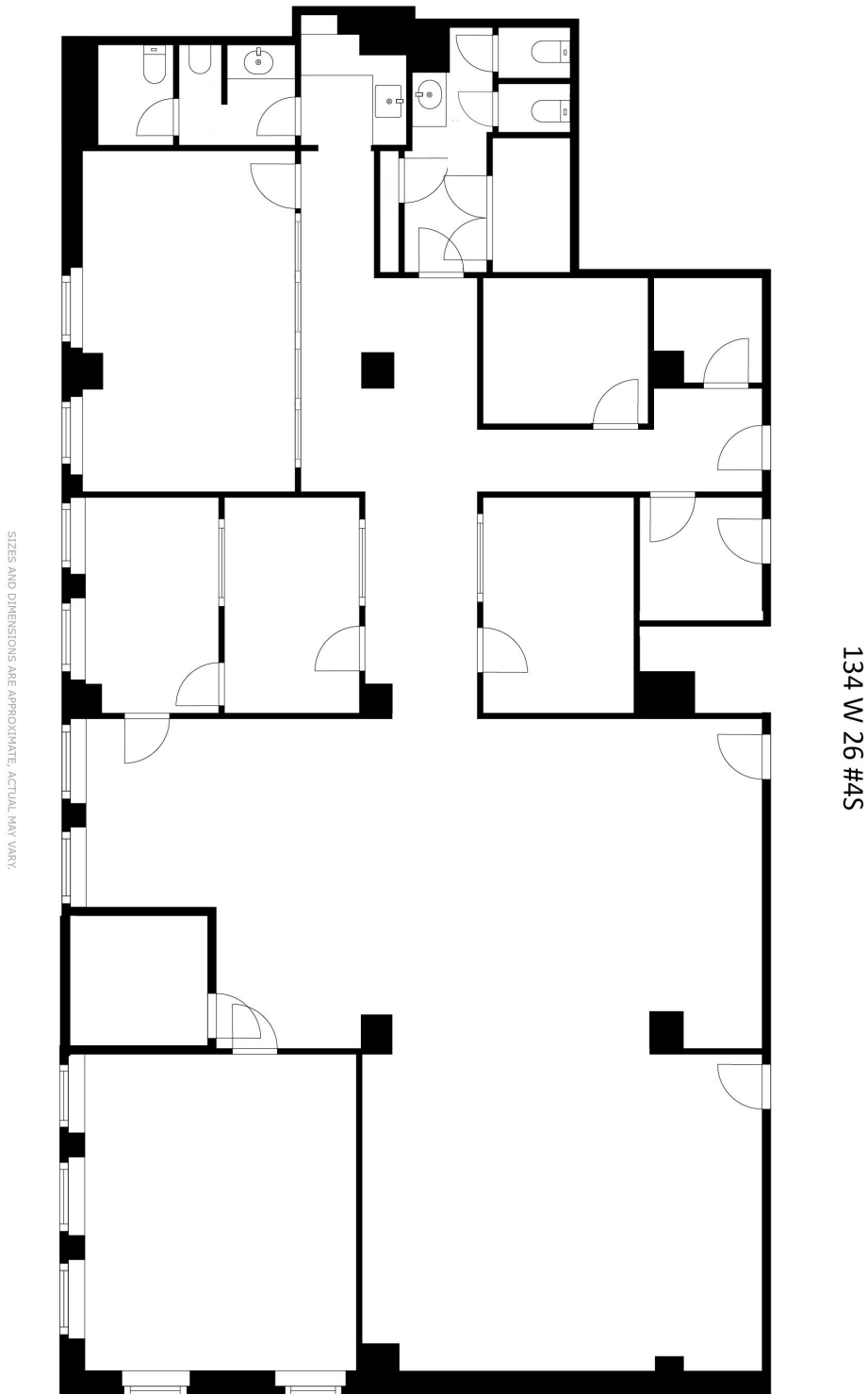
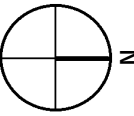
MICHAEL PINNEY

(212) 813-3573

pinney@signaturepartners.com

Signature Partners, LLC, licensed real estate broker, as exclusive agent, is pleased to present the above space for lease. All information supplied is from sources deemed reliable and is furnished subject to errors, omissions, further modification, or removal without notice. All square footage dimensions set forth are approximate.

134 West 26th Street



As-Built, can be modified



www.signaturepartners.com

Michael Pinney

(212) 813-3573

pinney@signaturepartners.com