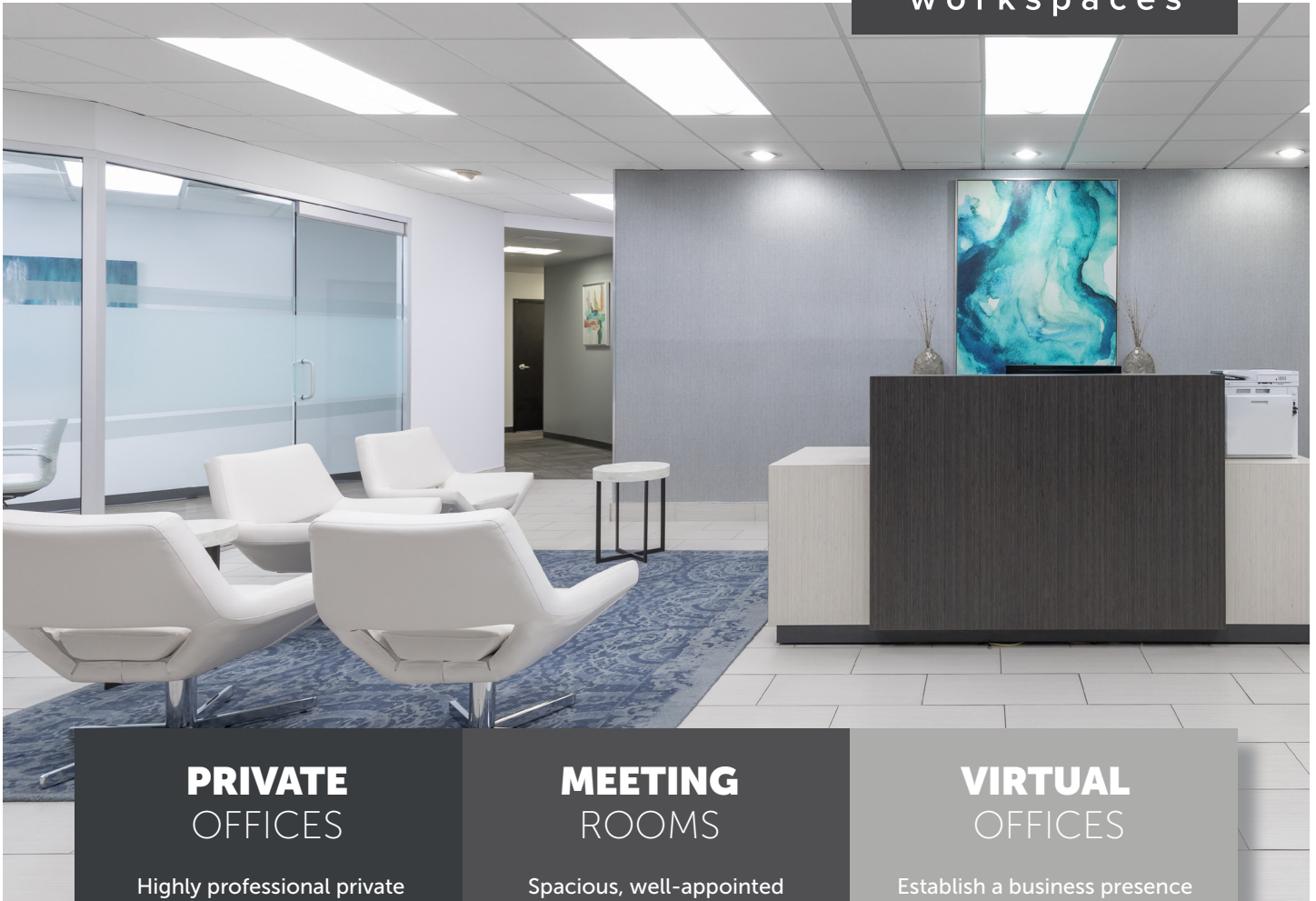


# Park Tower

5150 E. Pacific Coast Hwy, 2nd Floor, Long Beach, CA 90804



**PRIVATE OFFICES**

Highly professional private offices for individuals and teams that are flexible and scaled for growth.

**MEETING ROOMS**

Spacious, well-appointed meeting rooms with on-site administrative support. Available for an hour, day or longer.

**VIRTUAL OFFICES**

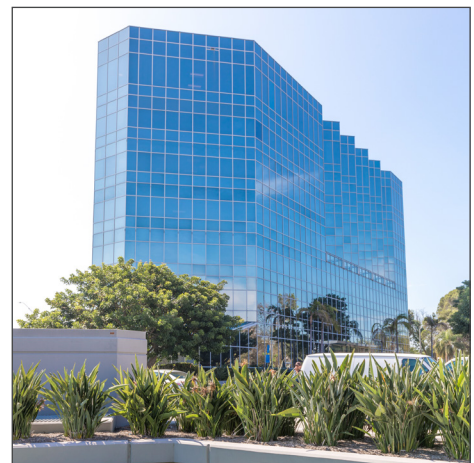
Establish a business presence with mail handling, phone answering or meeting room time.

## ABOUT THIS LOCATION

Welcome to Beach Business Center in Park Tower. Located at the corner of PCH and Anaheim, this Class-A tower features gorgeous views and recently renovated offices with well-appointed amenities throughout. Walk to nearby restaurants and shops or enjoy the view from your private office. This location is also minutes away from the 405, 22 and 605 Freeways.

## CONTACT US

Let's touch base! Contact the on-site General Manager at 562-346-3200 or [PCHmanager@premierworkspaces.com](mailto:PCHmanager@premierworkspaces.com) to schedule a tour!



# Park Tower

5150 E. Pacific Coast Hwy, 2nd Floor, Long Beach, CA 90804



## PREMIER AMENITIES

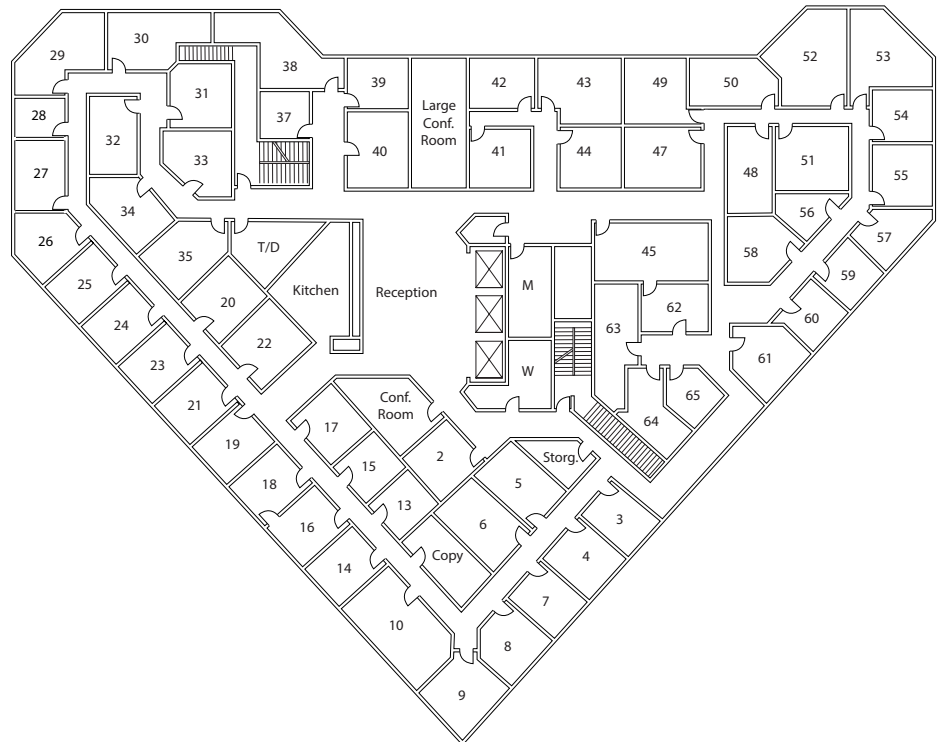
Our private suites can be easily customized to fit your desired aesthetic and brand.

- Private Offices
- Team Rooms
- High Speed Internet
- Telephone Answering
- Mail Collection
- Equipped Kitchen
- Day Offices
- Meeting Rooms
- Daily Janitorial
- Furnished or Unfurnished

## PREMIER DIFFERENCE

We've been perfecting the professional workspace for over 17 years.

- Highly-Professional Atmosphere
- On-Site Manager & Support Staff
- Scalable Solutions for Individuals and Teams
- On-Site Billing
- 90+ Locations Nationwide



## NEARBY AMENITIES

Located on Pacific Coast Highway, this location is surrounded by dining, shopping, and it's just steps away from the beach.

### Nearby Amenities:

- Aquarium of the Pacific
- City Place Shopping Center
- Civic Center
- Junipero Beach
- The Long Beach Convention Center
- Long Beach Superior Court
- Pike at Rainbow Harbor
- Shoreline Village
- The Queen Mary
- World Trade Center

### Nearby Transit:

- Freeways – 710, 405, 22
- Long Beach Airport (LGB)
- Bus – Long Beach Transit

## CONTACT US

Let's touch base! Contact the on-site General Manager at 562-346-3200 or [PCHmanager@premierworkspaces.com](mailto:PCHmanager@premierworkspaces.com) to schedule a tour!