

FOR LEASE ± 2,144 - ± 4,360 SF

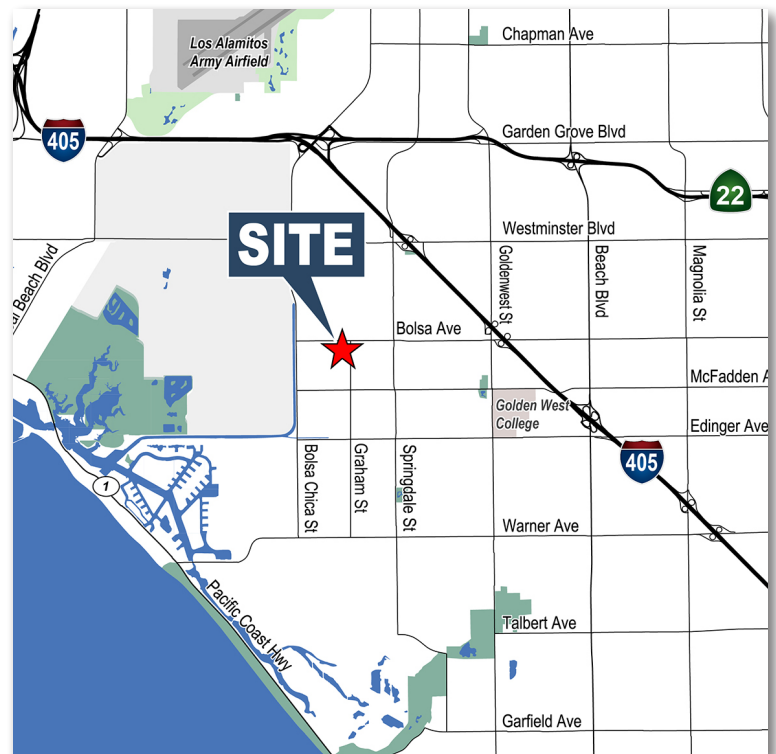
High-Image Building

5445 Oceanus Dr. & 15121 Graham St., Huntington Beach, CA



PROPERTY FEATURES

- High Image Multi-Tenant Building
- ± 20' Minimum Warehouse Clearance (Verify)
- An Approximate 70,000 SF Business Park
- Renovated in 2008
- 2:1 Parking
- Fire Sprinklered
- T-5 Lighting
- Frontier Fios Internet
- Ground Level Loading
- Drive-Around Truck Access
- Rear Loading Units
- Excellent Access to 405 and 22 Freeways
- High Identity Location in Excellent Huntington Beach Area



ERIC SMITH, SIOR
Senior Vice President
714.935.2310
esmith@voitco.com
Lic. #01940591

MIKE BOUMA, SIOR
Senior Vice President
714.935.2340
mbouma@voitco.com
Lic. #01070753

PAUL CAPUTO, MBA
Senior Vice President
714.935.2332
pcaputo@voitco.com
Lic. #01196935

Voit
REAL ESTATE SERVICES

FOR LEASE ± 2,144 - ± 4,360 SF

High-Image Building

5445 Oceanus Dr. & 15121 Graham St., Huntington Beach, CA



ERIC SMITH, SIOR
Senior Vice President
714.935.2310
esmith@voitco.com
Lic. #01940591

MIKE BOUMA, SIOR
Senior Vice President
714.935.2340
mbouma@voitco.com
Lic. #01070753

PAUL CAPUTO, MBA
Senior Vice President
714.935.2332
pcaputo@voitco.com
Lic. #01196935

Voit
REAL ESTATE SERVICES

2400 E. Katella Ave., Suite 750, Anaheim, CA 92806 • 714.978.7880 • 714.978.9431 Fax • Lic #01991785

www.ericrandolphsmith.com

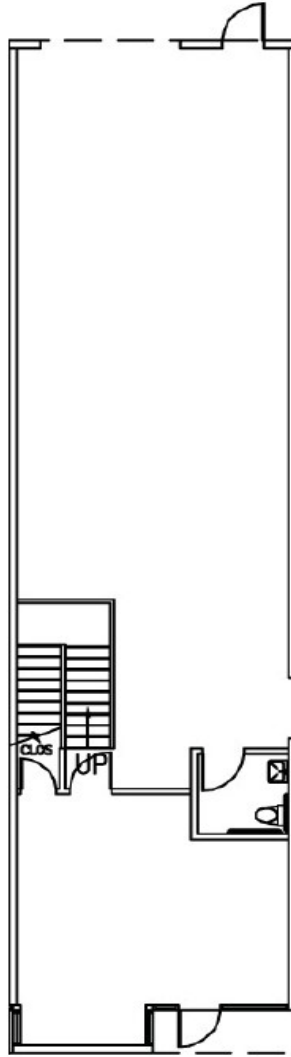
Licensed as Real Estate Salespersons by the DRE. The information contained herein has been obtained from sources we deem reliable. While we have no reason to doubt its accuracy, we do not guarantee it. ©2026 Voit Real Estate Services, Inc. All Rights Reserved. License #01991785.

FOR LEASE

High-Image Building

5445 Oceanus Dr. & 15121 Graham St., Huntington Beach, CA

SITE PLAN



5445 OCEANUS DRIVE

Suite	Size SF	Office SF	Asking Rate/SF	Availability	Comments
111	± 2,161	± 1,070	\$1.50/SF + \$.25/SF NNN/CAM	Immediately	20' ft. Clear (Verify), High Image, Frontier Fios High Speed, 2 Story HVAC Office, Private Restroom, 1 Ground Level Door

ERIC SMITH, SIOR
Senior Vice President
714.935.2310
esmith@voitco.com
Lic. #01940591

MIKE BOUMA, SIOR
Senior Vice President
714.935.2340
mbouma@voitco.com
Lic. #01070753

PAUL CAPUTO, MBA
Senior Vice President
714.935.2332
pcaputo@voitco.com
Lic. #01196935

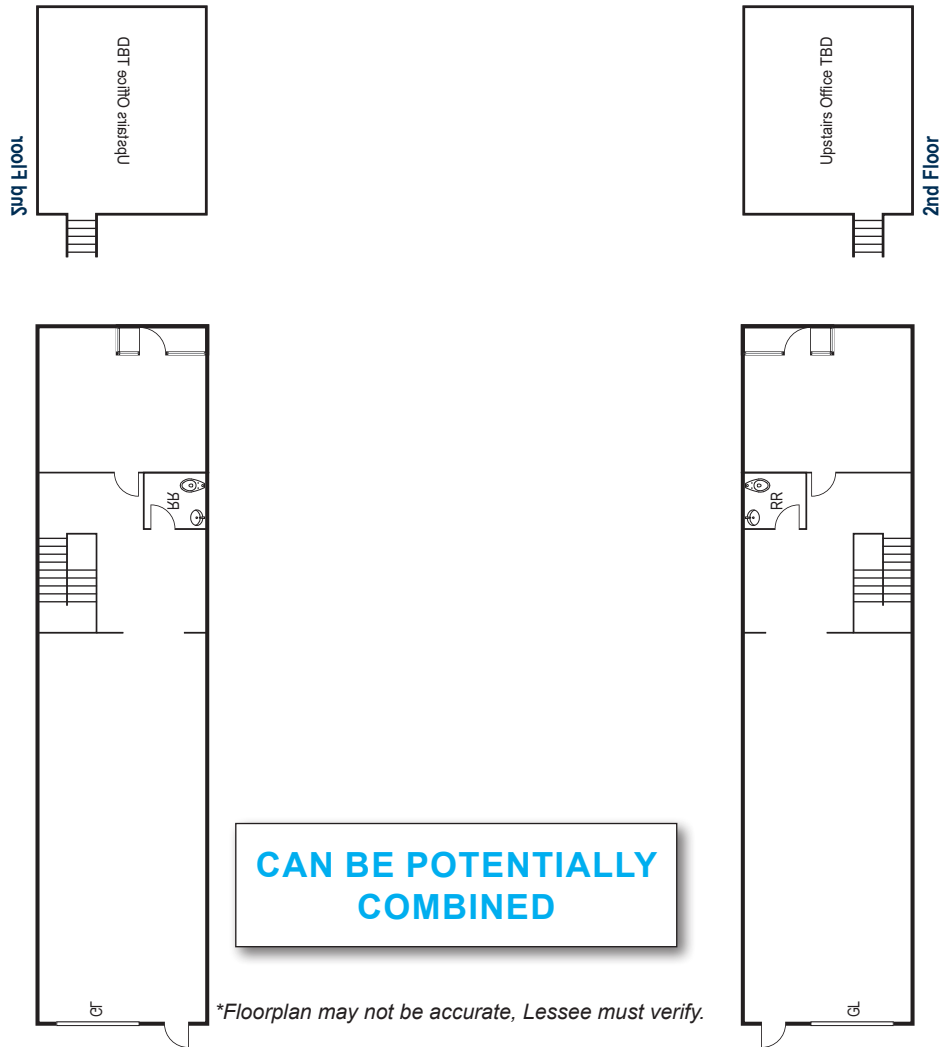
Voit
REAL ESTATE SERVICES

FOR LEASE ± 2,144 - ± 4,360 SF

High-Image Building

5445 Oceanus Dr. & 15121 Graham St., Huntington Beach, CA

SITE PLAN



15121 GRAMHAM ST

Suite	Size SF	Office SF	Asking Rate/SF	Availability	Comments
104	± 2,144	± 878	\$1.50/SF + \$.25/SF NNN/CAM	June 1, 2026	20'ft clear (verify), High Image, Frontier Fios high speed internet, 2 story office, HVAC, Private Restroom, 1 Ground Level Door
105	± 2,216	± 878	\$1.50/SF + \$.25/SF NNN/CAM	April 1, 2026	20'ft clear (verify), High Image, Frontier Fios high speed internet, 2 story office, HVAC, Private Restroom, 1 Ground Level Door

ERIC SMITH, SIOR
Senior Vice President
714.935.2310
esmith@voitco.com
Lic. #01940591

MIKE BOUMA, SIOR
Senior Vice President
714.935.2340
mbouma@voitco.com
Lic. #01070753

PAUL CAPUTO, MBA
Senior Vice President
714.935.2332
pcaputo@voitco.com
Lic. #01196935

Voit
REAL ESTATE SERVICES