

# 18 Kennedy Blvd.

EAST BRUNSWICK, NJ 08816

FOR LEASE

SECONDS FROM EXIT 9 OF THE NJ TURNPIKE  
ROUTE 18 & ROUTE 1

- **40,913 SF AVAILABLE**
- +/- 4,000 SF PROFESSIONAL OFFICE
- FOUR (4) LOADING DOCKS
- TWO (2) GRADE-LEVEL DRIVE-IN DOORS
- 20' CLEAR
- AMPLE PARKING
- AVAILABLE JANUARY 1, 2026

*Lance Bram*  
COMMERCIAL BROKERAGE  
[www.lancebram.com](http://www.lancebram.com)

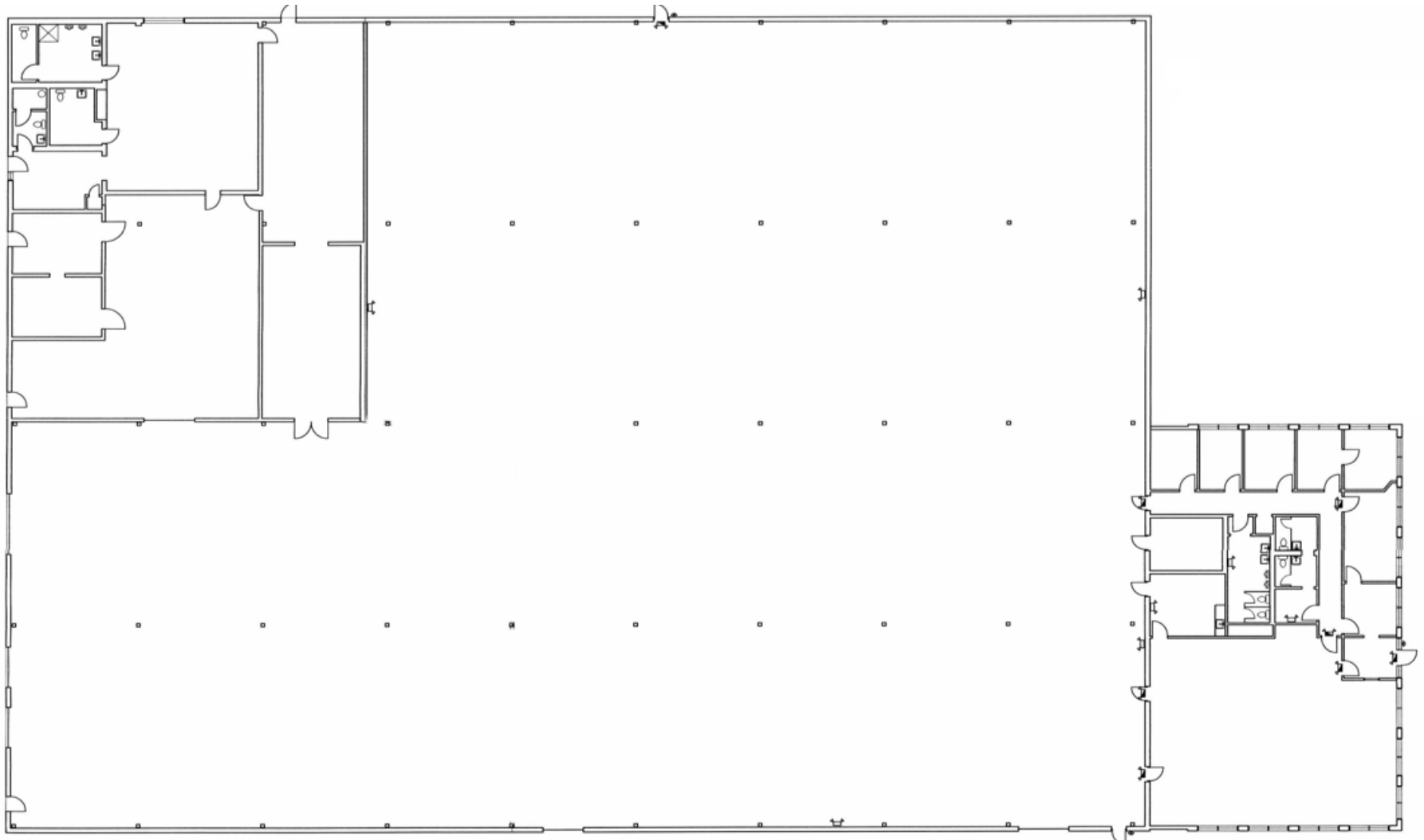


**JOE D'AGOSTINO 732.690.6339 JOE@LANCEBRAM.COM**

This information has been secured from sources we believe to be reliable. Accordingly, no warranty or representation, express or implied, is made to the accuracy of the information contained herein, and same submitted to errors, omissions, change of price, rental or other conditions, withdrawal notice, and to any special listing conditions imposed by our principals.

18 Kennedy Blvd.  
EAST BRUNSWICK, NJ 08816

*Lance Bram*  
COMMERCIAL BROKERAGE  
www.lancebram.com



**JOE D'AGOSTINO 732.690.6339 JOE@LANCEBRAM.COM**

This information has been secured from sources we believe to be reliable. Accordingly, no warranty or representation, express or implied, is made to the accuracy of the information contained herein, and same submitted to errors, omissions, change of price, rental or other conditions, withdrawal notice, and to any special listing conditions imposed by our principals.

# 18 Kennedy Blvd.

EAST BRUNSWICK, NJ 00816

*Lance Bram*  
COMMERCIAL BROKERAGE  
www.lancebram.com



**JOE D'AGOSTINO 732.690.6339 JOE@LANCEBRAM.COM**

This information has been secured from sources we believe to be reliable. Accordingly, no warranty or representation, express or implied, is made to the accuracy of the information contained herein, and same submitted to errors, omissions, change of price, rental or other conditions, withdrawal notice, and to any special listing conditions imposed by our principals.