

551 MADISON

Designed for *work.*

551 Madison is a 17-story boutique building located in the heart of Madison Avenue's coveted commercial and retail corridor, with close proximity to everything your business needs to thrive. Highly efficient floor plates and oversized windows provide abundant natural light and air, and foster an environment for superb productivity.



A modern lobby interior featuring a wall of numerous small, white, spherical objects. The wall is covered in these spheres, with some colored in black, grey, and red. In the foreground, a dark, polished marble reception desk is visible, with a prominent white vein running through it. The floor is a dark, polished material, and the ceiling has recessed lighting. The overall aesthetic is clean and contemporary.

551 MADISON

Recently Renovated Lobby



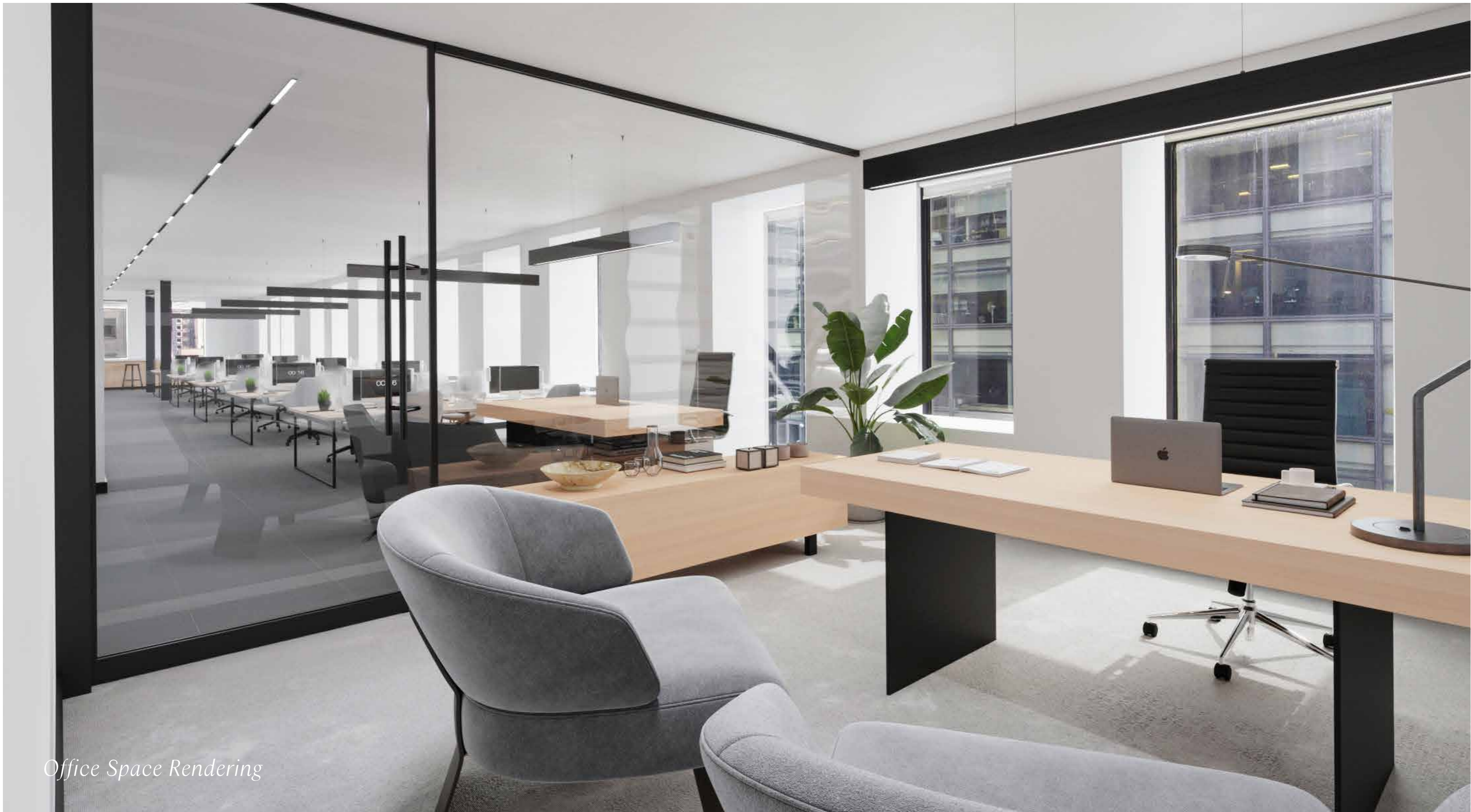
Space to *create.*

Intentional spaces for working better and together.

- + Outstanding 8,300 sf contiguous full floors which can be leased individually or combined to create a unique “top-of-house” 39,000 sf block with exclusive outdoor space and significant branding opportunities
- + Partial floor opportunities ranging from 3,412 – 6,500 sf
- + Tenant-only amenity center with conferencing and lounge
- + Recently renovated lobby with 24/7 security
- + Tenant-controlled perimeter HVAC
- + Steps from multiple subways including [E](#) [F](#) [M](#) [N](#) [R](#) [W](#) [4](#) [5](#) [6](#)
- + Owner-occupied building



Office Space Rendering

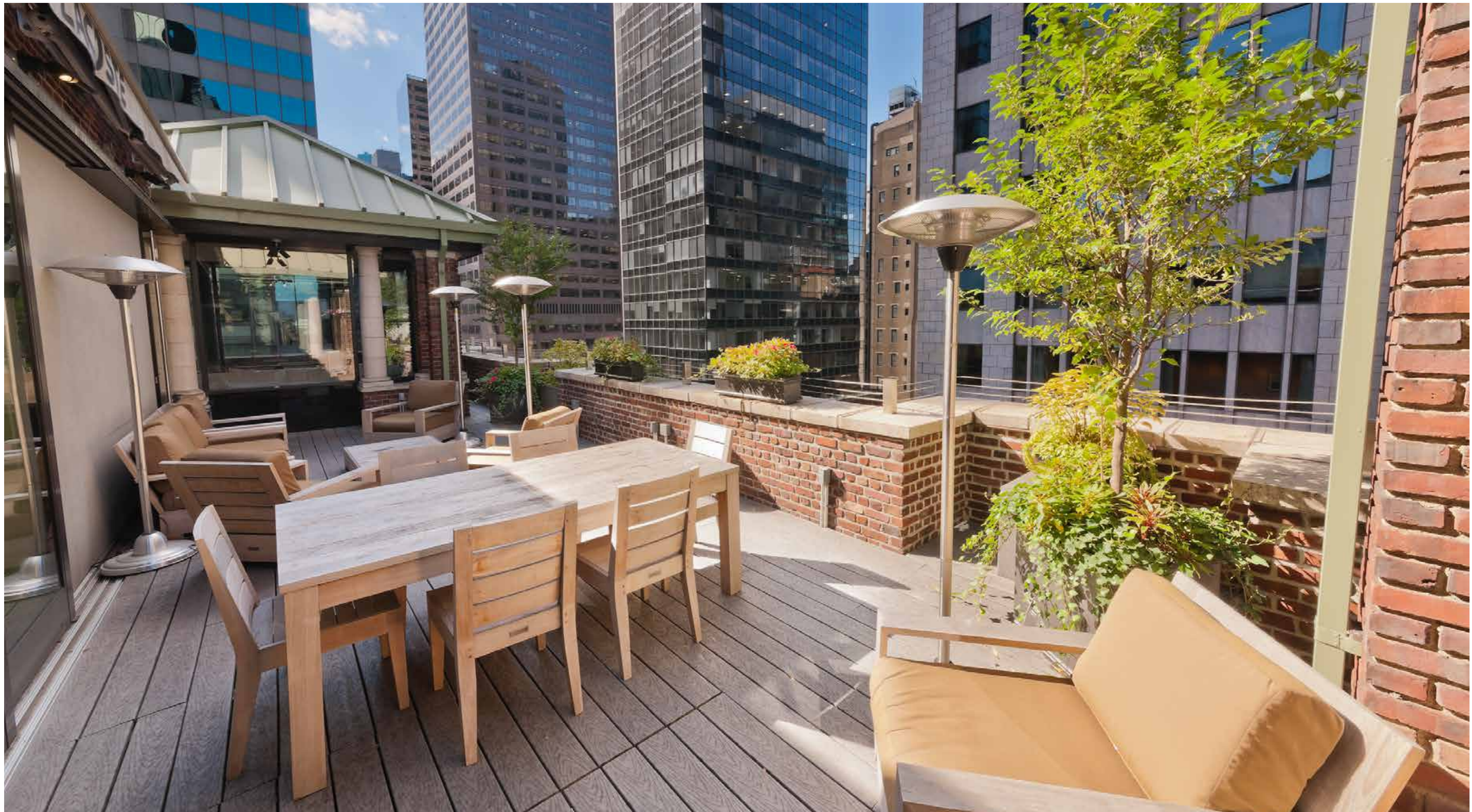


Office Space Rendering



Office Space Rendering





Madison Avenue Views.



17th Floor Terrace Viewpoint



A world-class *location.*

**A work haven in New York's
premier business district.**

- + Neighboring renowned retailers and restaurants
- + Proximate to notable corporate neighbors
- + Conveniently located near major transportation
- + Blocks from Central Park



Welcome to the *neighborhood*

Central Park



5 Av/59 St

N R W



57 St

F



59 St

**4 5 6
N R W**

551



5 Av/53 St

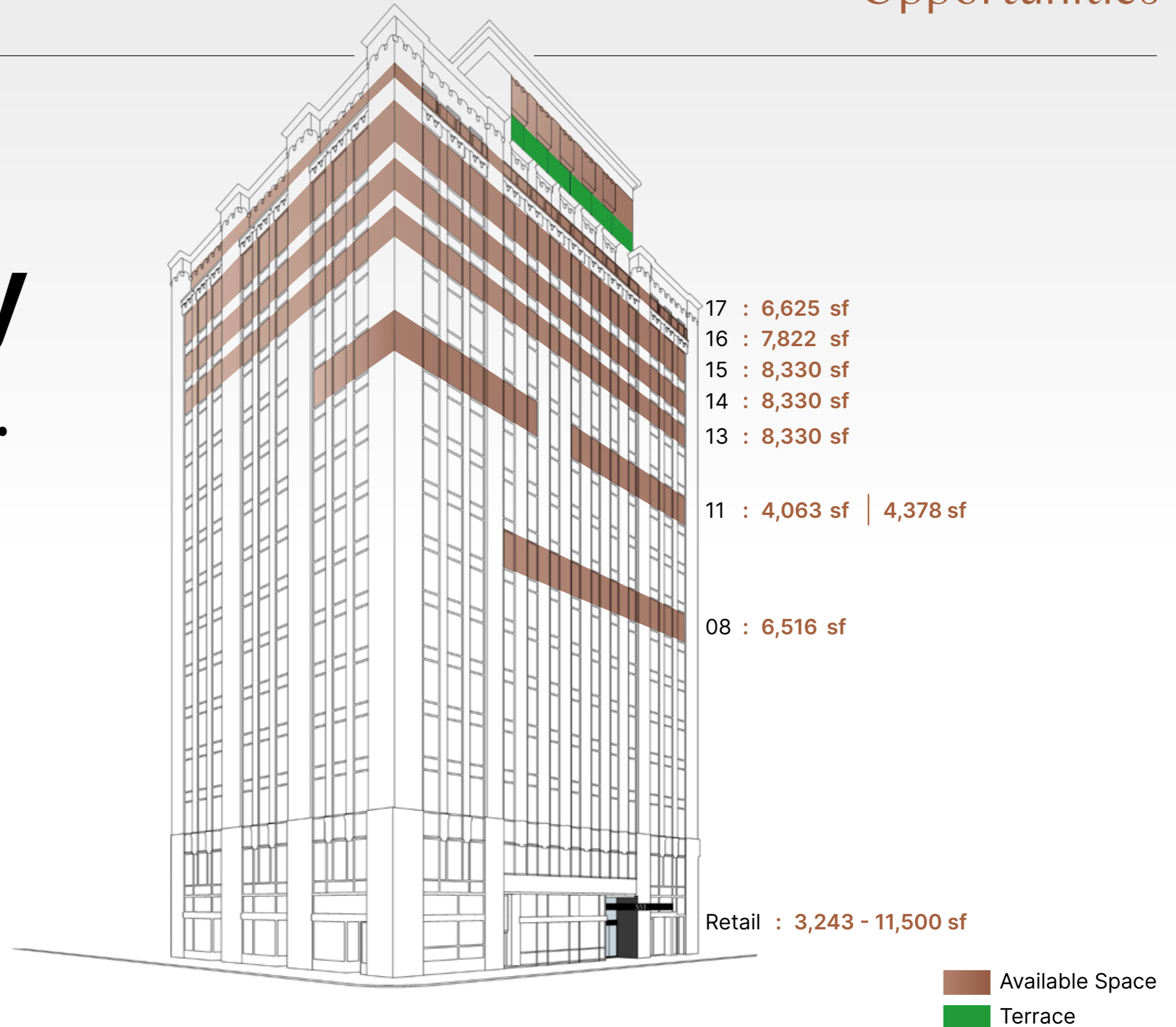
M E



Move-in ready space available.

8,300 sf contiguous full floors which can be leased individually or combined to create a unique “top-of-house” **39,000 sf** block with exclusive outdoor space and significant branding opportunities.

Partial floor opportunities ranging from **4,063 – 6,500 sf**



Office

Partial 8th
Floor

6,516 sf

551 MADISON



Office

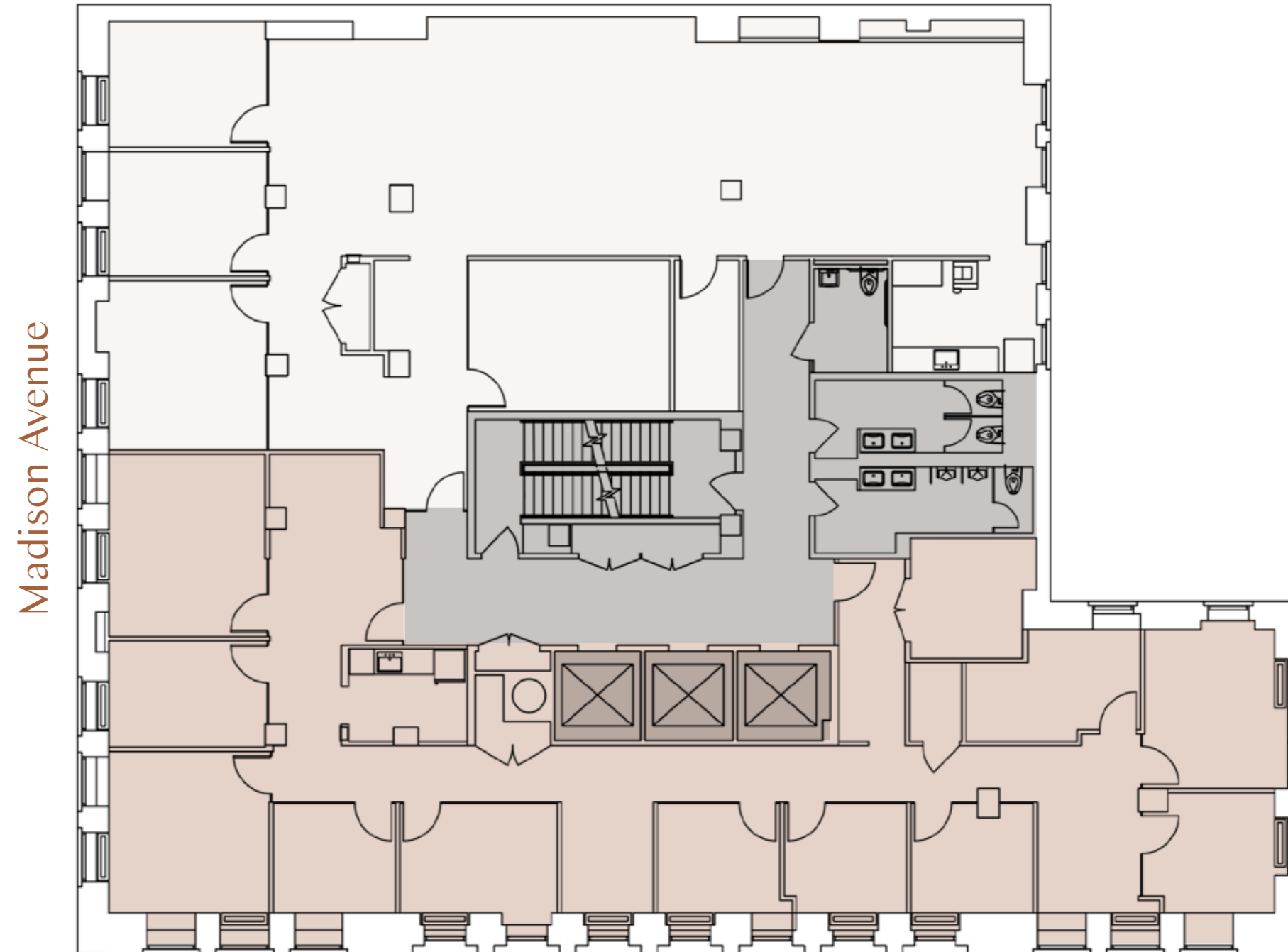
Partial 11th
Floor

4,063 sf

Partial 11th
Floor

4,378 sf

551 MADISON



55th Street

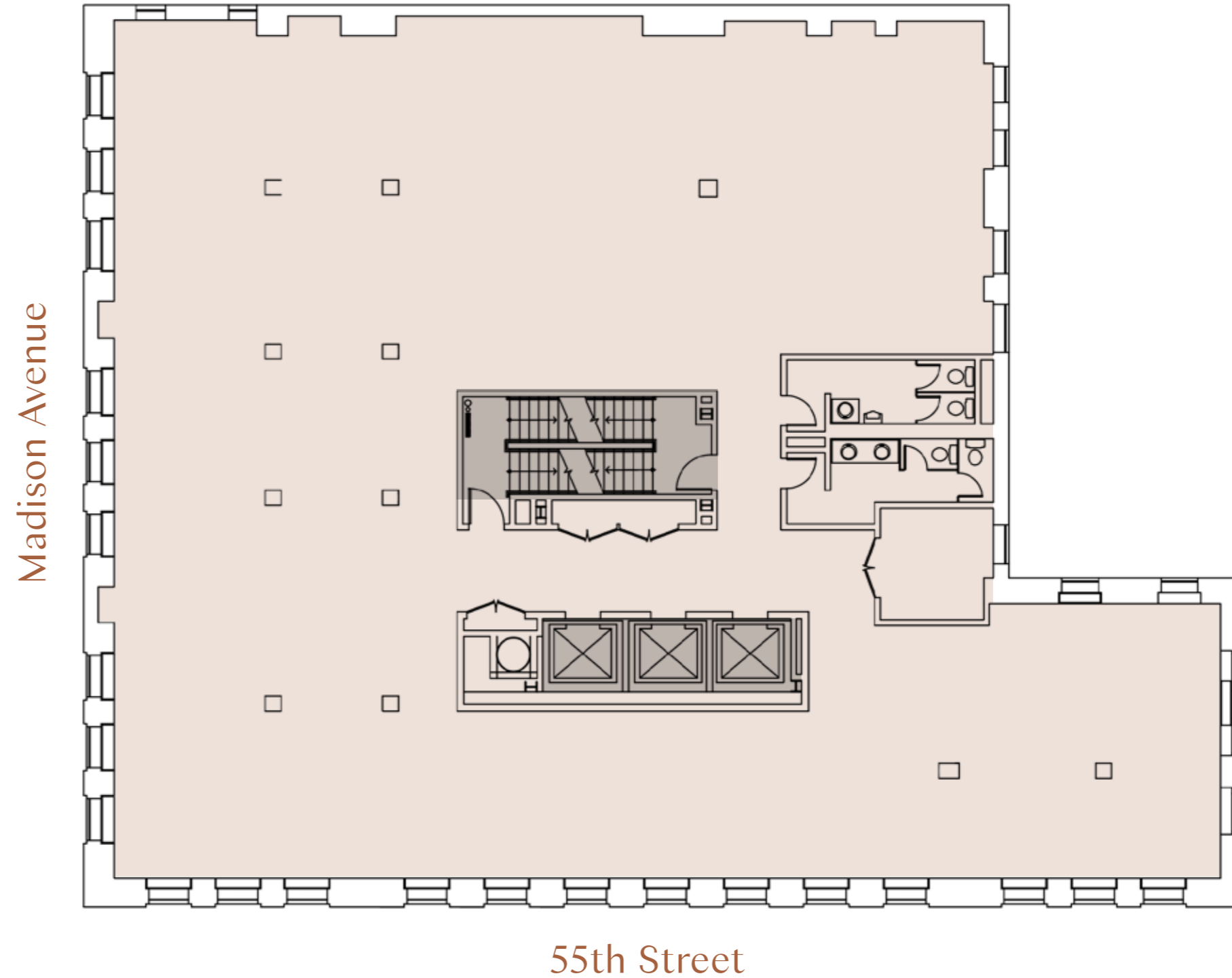
Office

Core & Shell

Entire 13-15
Floors

8,330 sf

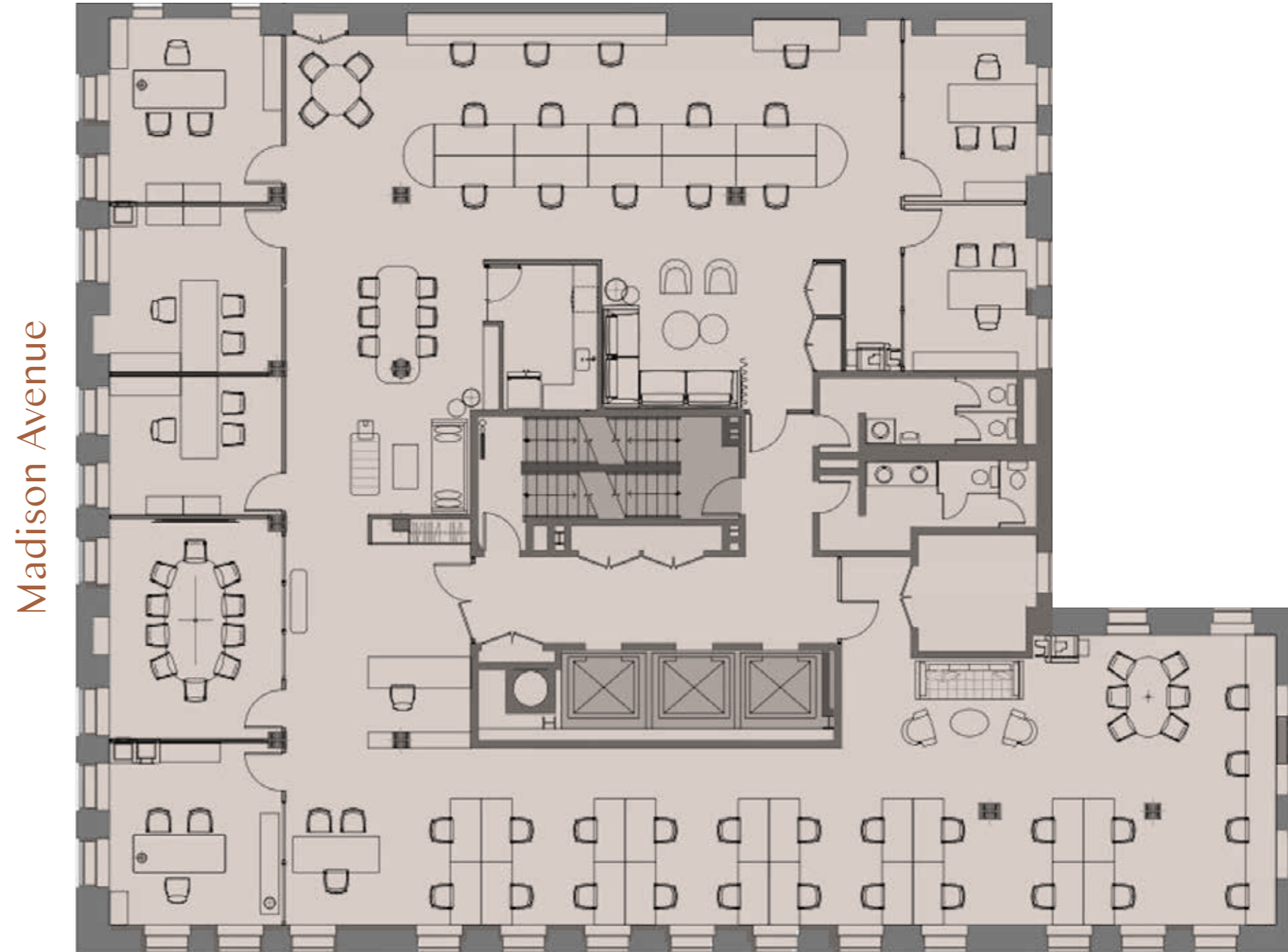
551 MADISON



Office

Test-Fit
Entire 14
Floor
8,330 sf

551 MADISON



Madison Avenue

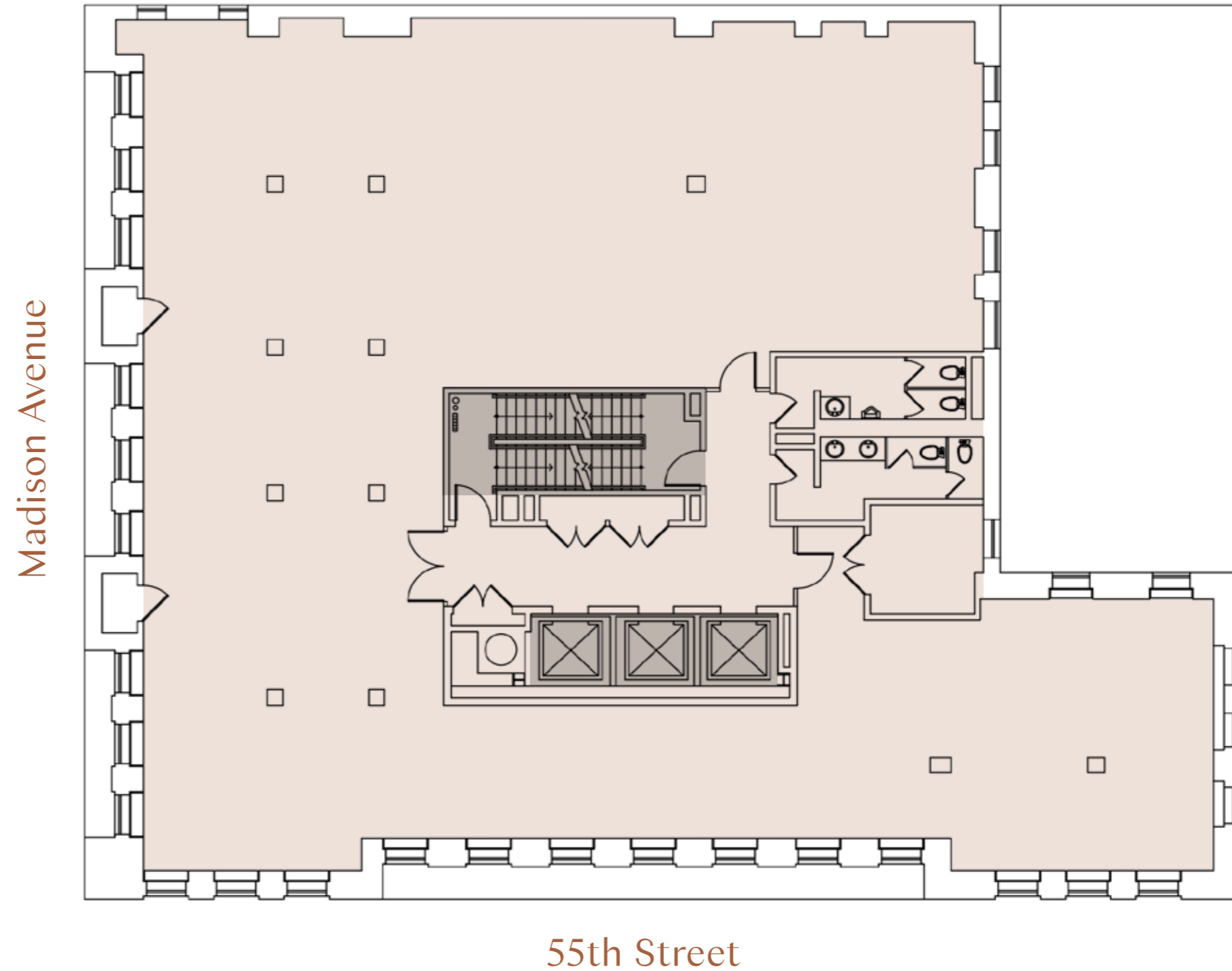
55th Street

Office

Entire 16th
Floor

7,822 sf

551 MADISON

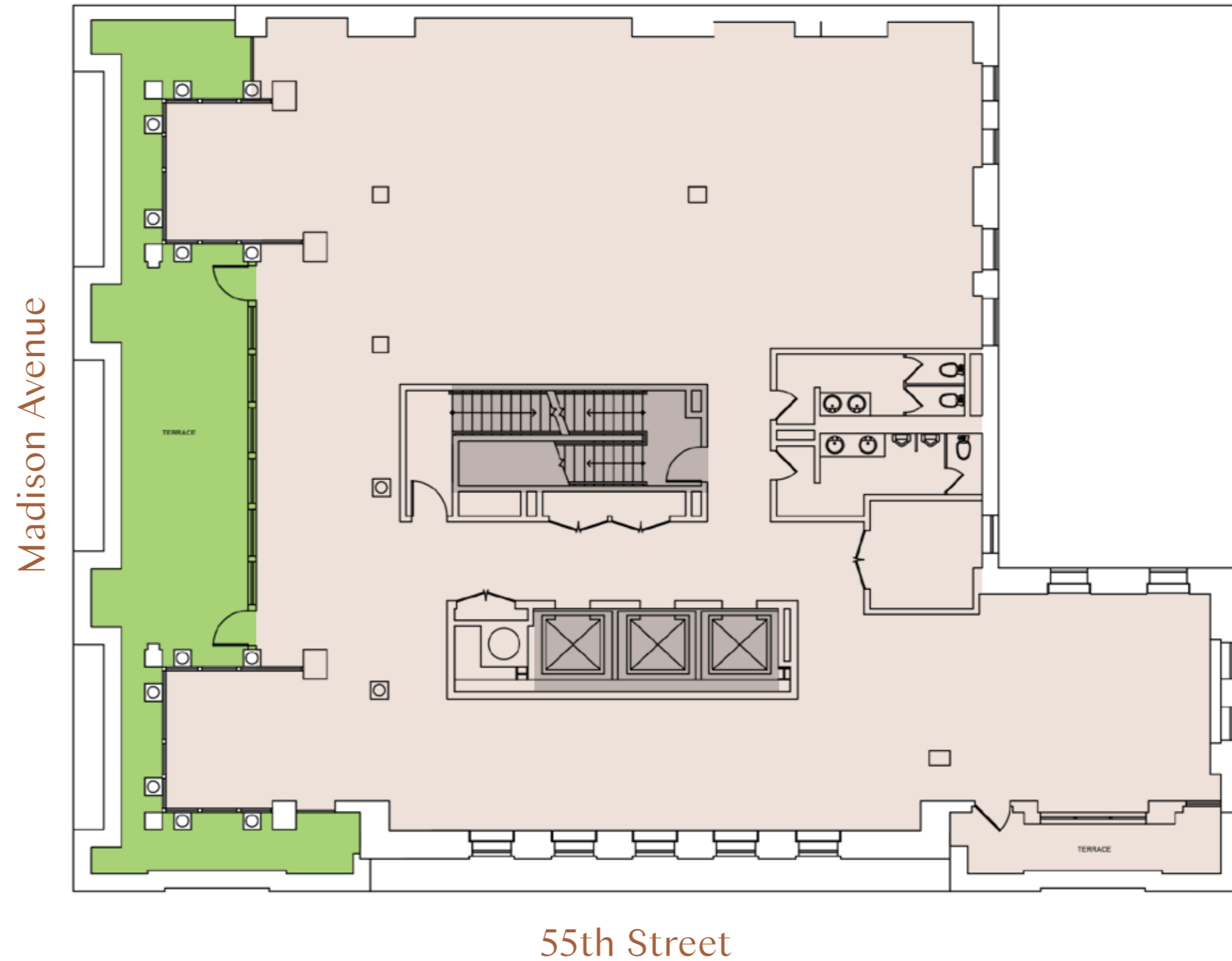


Office

Entire 17th
Floor

6,625 sf

551 MADISON



Block / Lot

1291-21

Site Area

7,542 square feet

Zoning

C5-3, Restricted Central Commercial District.

Frontage

75' 5" along Madison Avenue and 100' along 55th Street.

Bathrooms

Restrooms were renovated and feature white tiles, engineered counter tops, and new ceilings and lighting.

Ceiling Heights

10' – 13'

Electric Service

Via two Con Edison 3,000 amp, 110/208-volt 3-phase 4-wire feeders. Each floor equipped with one 208 volt, 3-phase 100 amp panel service.

Façade / Exterior

Exterior is predominately clad in brick with terra cotta coping stones. Floors 1 and 2 are faced in brown granite.

Fire Safety

Fire alarm system is a Notifier Class E system.

Floor Load Capacity

Office Floors: 50 lbs. psf
Ground Floor: 120 lbs. psf
Mezzanine & Cellar: 100 lbs. psf

HVAC

HVAC to each floor provided via: one 10-ton Florida heat pump unit that is used for both heating and cooling and; 18 one-ton Island Aire peripheral units.

Plumbing

Water is supplied via a 4-inch water main, entering the building from 55th Street. Two pumps in sub-cellar feed a 3,000-gallon redwood house water tank located on the roof.

Roof

The roof is built-up construction, consisting of poured concrete topped with a layer of foam covered with a silver painted rubberized membrane.

Stairwells

Two sets of stairwells arranged in a scissor-type alignment within the central core.

Structure

Framing consists of concrete encased steel with riveted connections. Floor and roofs are framed with reinforced concrete.

Windows

Windows are composed of double-pane lightly smoked glass encased in anodized aluminum frames.

551 MADISON

Leasing
Team

Greg Wang

+1 212 632 1810
greg.wang@jll.com

Kate Roush

+1 212 812 5714
kate.roush@jll.com

Thomas Swartz

+1 212 220 4118
thomas.swartz@jll.com

Metin Negrin

+1 212 750 3500
mnegrin@lexincapital.com

Aaron Marcus

+1 212 750 3500
amarcus@lexincapital.com



Lexin Capital