

# TURNKEY SPACES BY GREENWICH AVE



41  
WEST  
PUTNAM  
AVENUE  
GREENWICH, CT



| CONTACT

**BENJAMIN GOLDSTEIN**

914-610-5954 | [benjamin.goldstein@nrmk.com](mailto:benjamin.goldstein@nrmk.com)

**NEWMARK**



**41 WEST PUTNAM AVENUE**  
GREENWICH / CONNECTICUT

## SPECIFICATIONS

**AVAILABILITIES** SUITE 202: 1,094 SF  
SUITE 203: 1,170 SF  
CAN BE COMBINED: 2,264 SF  
POSSESSION: IMMEDIATE

**RENT** UPON REQUEST

**PARKING** SUITE 202: 2 SPACES  
SUITE 203: 3 SPACES

## HIGHLIGHTS

HIGH-END RECENTLY BUILT SPACES  
BRAND NEW RESTROOM & HALLWAY FINISHES  
2 MINUTE WALK TO GREENWICH AVE  
FINANCIAL SERVICES CO-TENANCY



FRONT ENTRANCE



MAIN LOBBY



WEST PUTNAM AVENUE

**2**  
MINUTE WALK TO  
GREENWICH  
AVENUE

**NEWMARK**



**41**  
**WEST**  
**PUTNAM**  
**AVENUE**  
 GREENWICH, CT

# GREENWICH AVENUE MAP

- Easy access to Interstate 95
- 2 minute walk to iconic Greenwich Avenue
- Short walk or drive to Greenwich Train Station
- 25 minute drive to Westchester County Airport
- 45 minute train ride to Grand Central Terminal





41 WEST PUTNAM AVENUE  
GREENWICH / CONNECTICUT

**SUITE 203**

**1,170 SF**

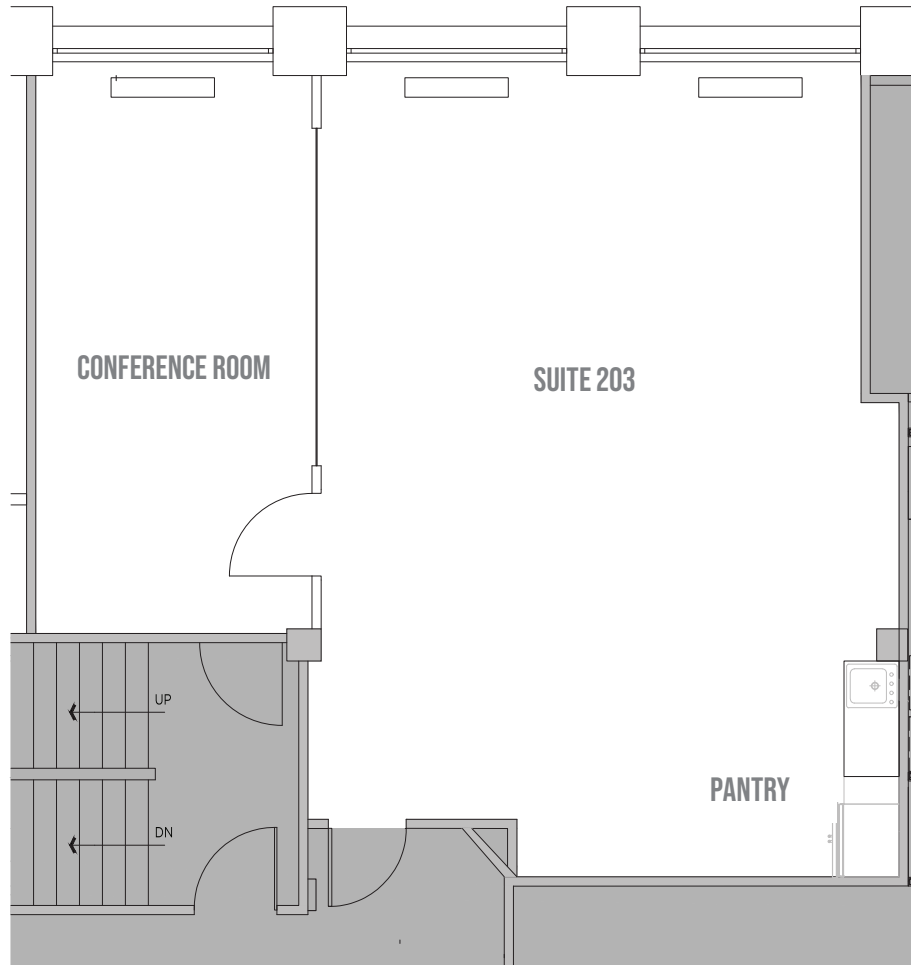
EXISTING CONDITION PLAN

**BENJAMIN GOLDSTEIN**

914-610-5954

benjamin.goldstein@nrmk.com

**NEWMARK**





41 WEST PUTNAM AVENUE  
GREENWICH / CONNECTICUT

SUITE 203

**BENJAMIN GOLDSTEIN**

914-610-5954

[benjamin.goldstein@nrmk.com](mailto:benjamin.goldstein@nrmk.com)

**NEWMARK**





41 WEST PUTNAM AVENUE  
GREENWICH / CONNECTICUT

SUITE 202

1,094 SF

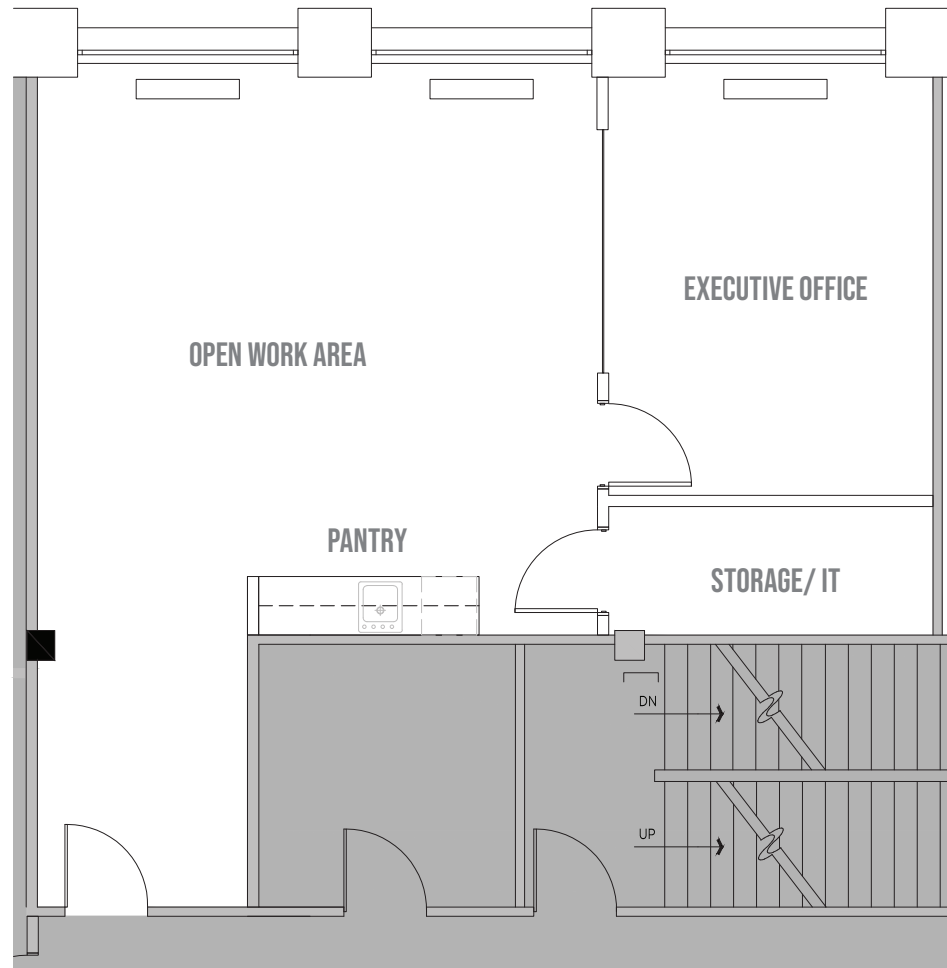
EXISTING CONDITION PLAN

BENJAMIN GOLDSTEIN

914-610-5954

benjamin.goldstein@nrmk.com

NEWMARK





41 WEST PUTNAM AVENUE  
GREENWICH / CONNECTICUT

SUITE 202

**BENJAMIN GOLDSTEIN**

914-610-5954

[benjamin.goldstein@nmrk.com](mailto:benjamin.goldstein@nmrk.com)

**NEWMARK**



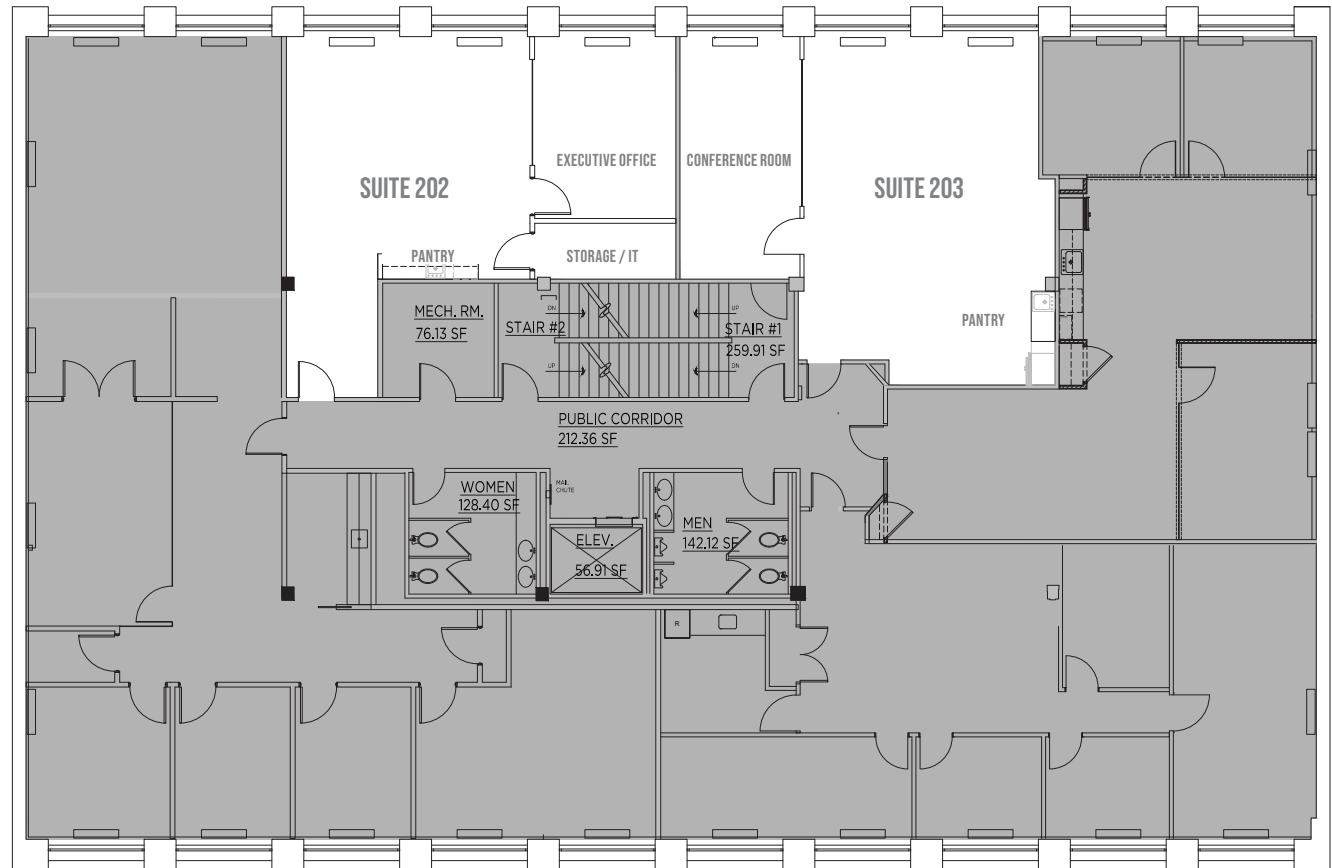


41 WEST PUTNAM AVENUE  
GREENWICH / CONNECTICUT

## SUITE 202 & 203

2,264 SF

EXISTING CONDITION PLAN



BENJAMIN GOLDSTEIN

914-610-5954

benjamin.goldstein@nrmk.com

NEWMARK



41 WEST PUTNAM AVENUE  
GREENWICH / CONNECTICUT

SUITE 202 & 203

2,264 SF

POTENTIAL LAYOUT FOR  
COMBINED UNITS

**BENJAMIN GOLDSTEIN**

914-610-5954

benjamin.goldstein@nrmk.com

**TIMOTHY R RORICK**

Designated Broker  
tim.rorick@nrmk.com

**NEWMARK**

