



Brady Sullivan Properties  
670 N. Commercial Street  
Manchester, nh 03101  
603.622.6223



Owner  
**BRADY SULLIVAN  
PROPERTIES**  
MANCHESTER NH

Project  
**1750 Elm Street**  
MANCHESTER NH

Seals

| Issues |             |
|--------|-------------|
| Date   | Description |
|        |             |
|        |             |
|        |             |
|        |             |

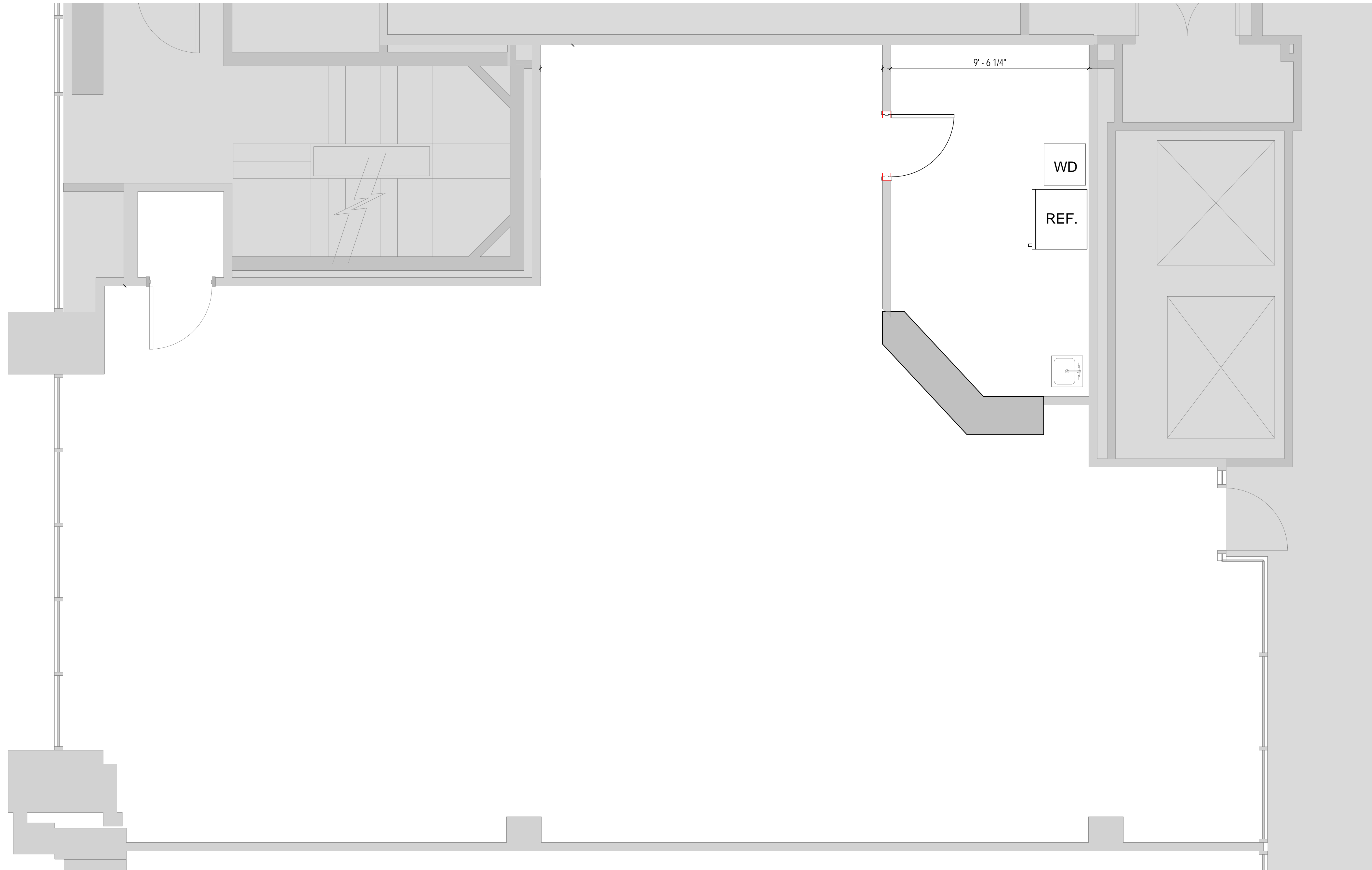
| Revisions |      |             |
|-----------|------|-------------|
| No.       | Date | Description |
|           |      |             |
|           |      |             |
|           |      |             |
|           |      |             |

Drawing Title  
**SUITE 13**  
**2,222 RSF**

|                       |                     |
|-----------------------|---------------------|
| Issue Date:           | 4-24-2018           |
| Project No:           | Scale: As indicated |
| Project Manager:      | Production Leader:  |
| Project Architect: CL | Peer Reviewer: CL   |

Drawing Number  
**A0.8**

| LEGEND |                    |  |                                    |
|--------|--------------------|--|------------------------------------|
|        | NOT IN SCOPE       |  | PROPOSED ITEMS (HEAVY LINE WEIGHT) |
|        | EXISTING ITEMS     |  | DEMO                               |
|        | NEW DOOR AND FRAME |  | EXISTING DOOR AND FRAME TO REMAIN  |



1 SUITE 13  
3/8" = 1'-0"

DISCLAIMER: ALL BUILDOUT IS BASED ON BRADY SULLIVAN PROPERTIES "CONSTRUCTION STANDARDS".  
BRADY SULLIVAN PROPERTIES RESERVES THE RIGHT TO ISSUE A CHANGE ORDER FOR ADDITIONAL WORK  
NOT INCLUDED IN DRAWINGS.

4/24/2018 8:23:47 AM