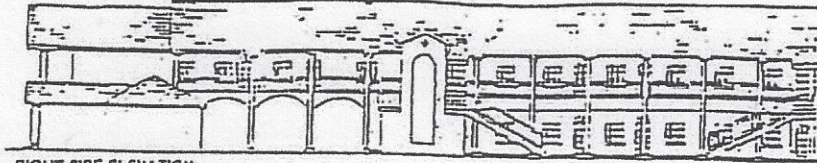


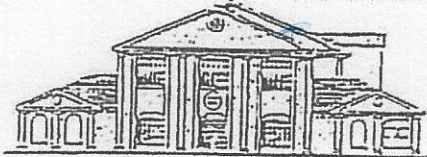
EXHIBIT "A"

(Leased Premises)

Bank
and
OFFICE
COMPLEX



RIGHT SIDE ELEVATION

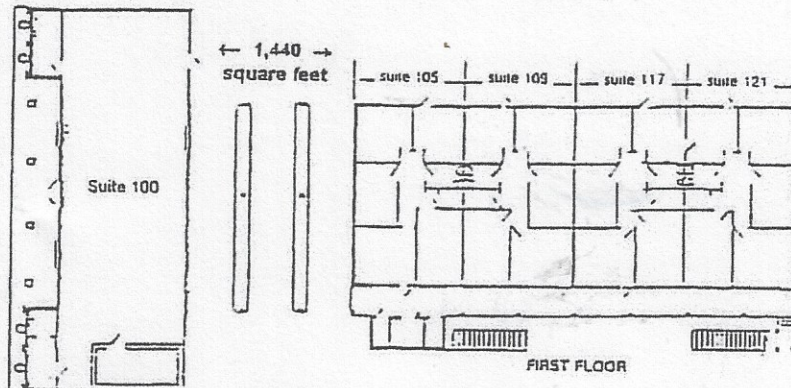


FRONT ELEVATION

Ground level has 4 suites consisting of 8,770 square feet. Fairwinds Federal Credit Union is located in the front portion of the site. The second floor consists of 6 executive offices totaling 7,418 square feet served by an elevator for the convenience of occupants and their clients. Four of the suites could be subdivided into smaller units. Office layout is well planned, functional and versatile for many applications and requirements.

FIRST FLOOR

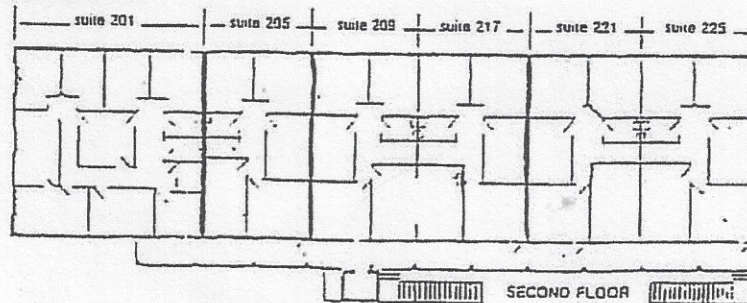
- Suite 100 * -- 2,636 square feet
- Drivethru * -- 1,440 square feet
- Suite 105 * -- 1,196 square feet
- Suite 109 * -- 1,150 square feet
- Suite 117 * -- 1,146 square feet
- Suite 121 * -- 1,202 square feet



FIRST FLOOR

SECOND FLOOR

- Suite 201 ---- 1,600 square feet
- Suite 205 ---- 1,110 square feet
- Suite 209 ---- 1,190 square feet
- Suite 217 ---- 1,188 square feet
- Suite 221 ---- 1,150 square feet
- Suite 225 ---- 1,180 square feet

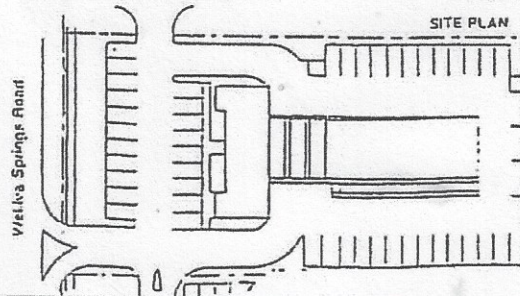


SECOND FLOOR

- May be subdivided into various units

16,188 Total Square Feet

The complex is highly visible to either North or South bound traffic on Wekiva Springs Road. A left turn center provides easy access to the complex. Ample parking of 49 spaces is provided. Southern style architecture, quality construction and professional landscaping lends a regal ambiance to the entire center.



SITE PLAN