



TROUT DANIEL & ASSOCIATES

BUY. SELL. LEASE. ADVISE.



# Old Court Exchange

Office Building For Lease

5310 Old Court Road | Randallstown | MD 21133

Call Us 410.435.4004 | Visit Us [troutdaniel.com](http://troutdaniel.com) | 30 E. Padonia Road, Suite 504 Timonium, MD 21093

# Property Summary



## Offering Summary

Available SF:	806 SF - 1,800 SF
Lot Size:	1.01 Acres
Building Size	21,769 SF

## Available Spaces

Suite	Lease Rate	Space Size
105	\$24.00 PSF	1,442 SF
201	\$24.00 PSF	1,800 SF
302	\$24.00 PSF	989 SF

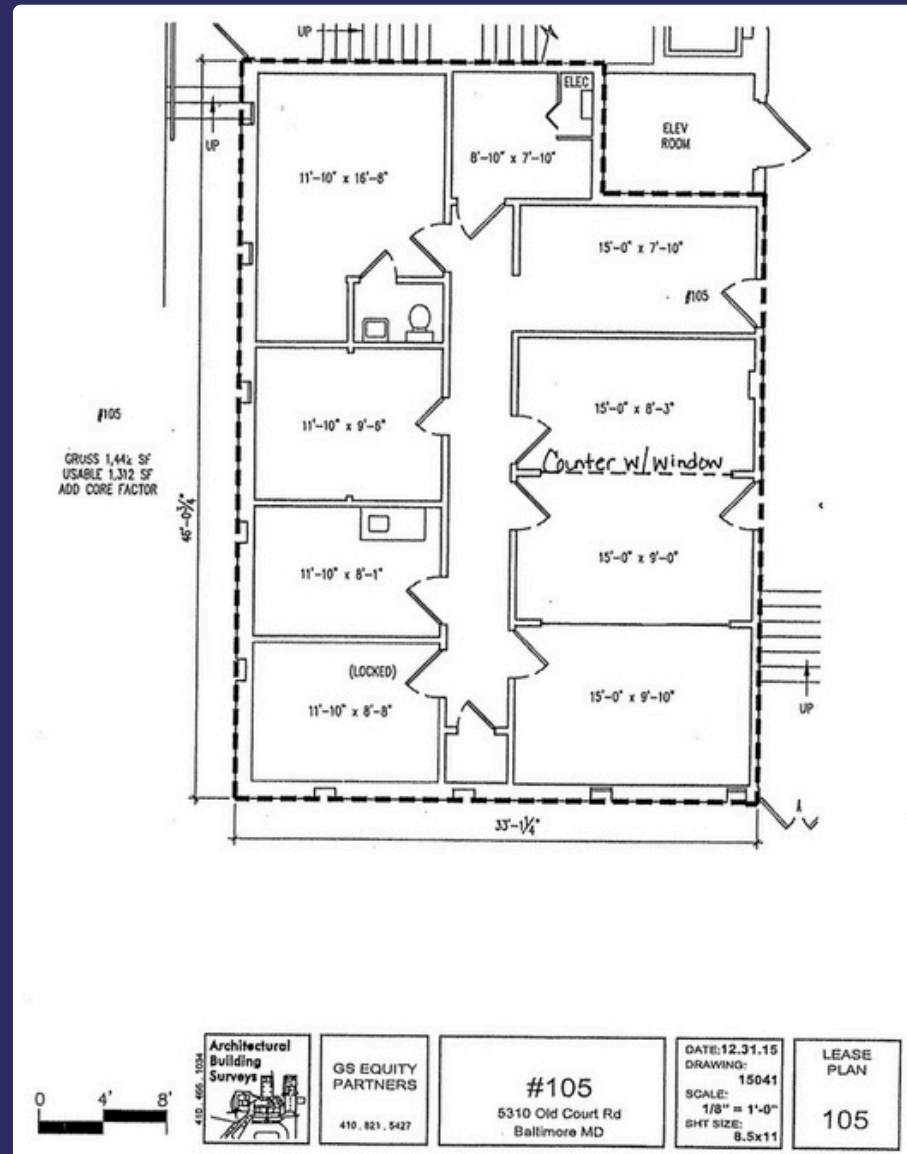
## Property Highlights

- Parking ratio of 4/1,000 RSF leased
- Professionally managed by Goddard Companies
- Controlled access
- Updated common area restrooms
- In-suite restrooms available in select suites

## Location Overview

This building offers fully built-out medical/general office suites. It is conveniently located 0.3 miles from Northwest Hospital and prominently located just off the corner of Liberty Road and Old Court Road.

# Floor Plan: Suite 105



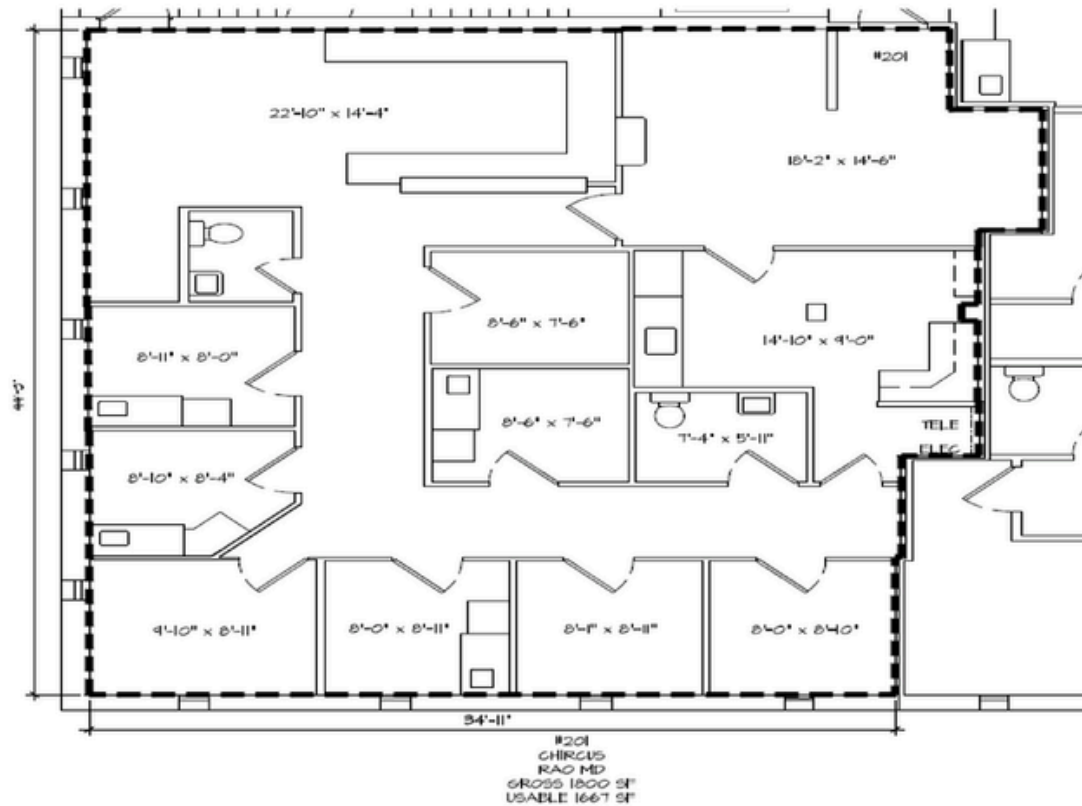
# Floor Plan: Suite 201

Sq/Ft 1667

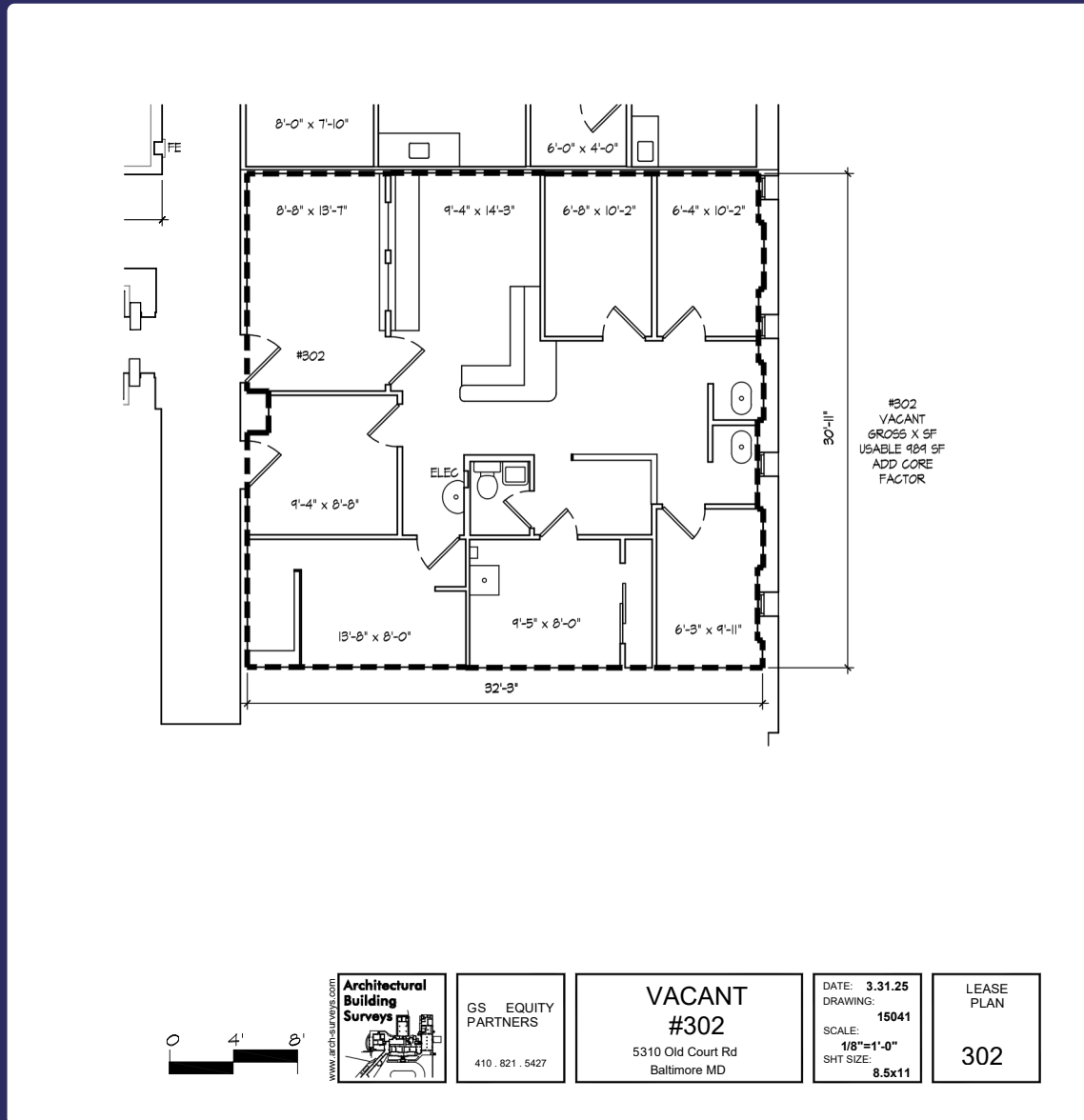
5310 Old Court Road

Ste. 201

Randallstown MD, 21133



# Floor Plan: Suite 302

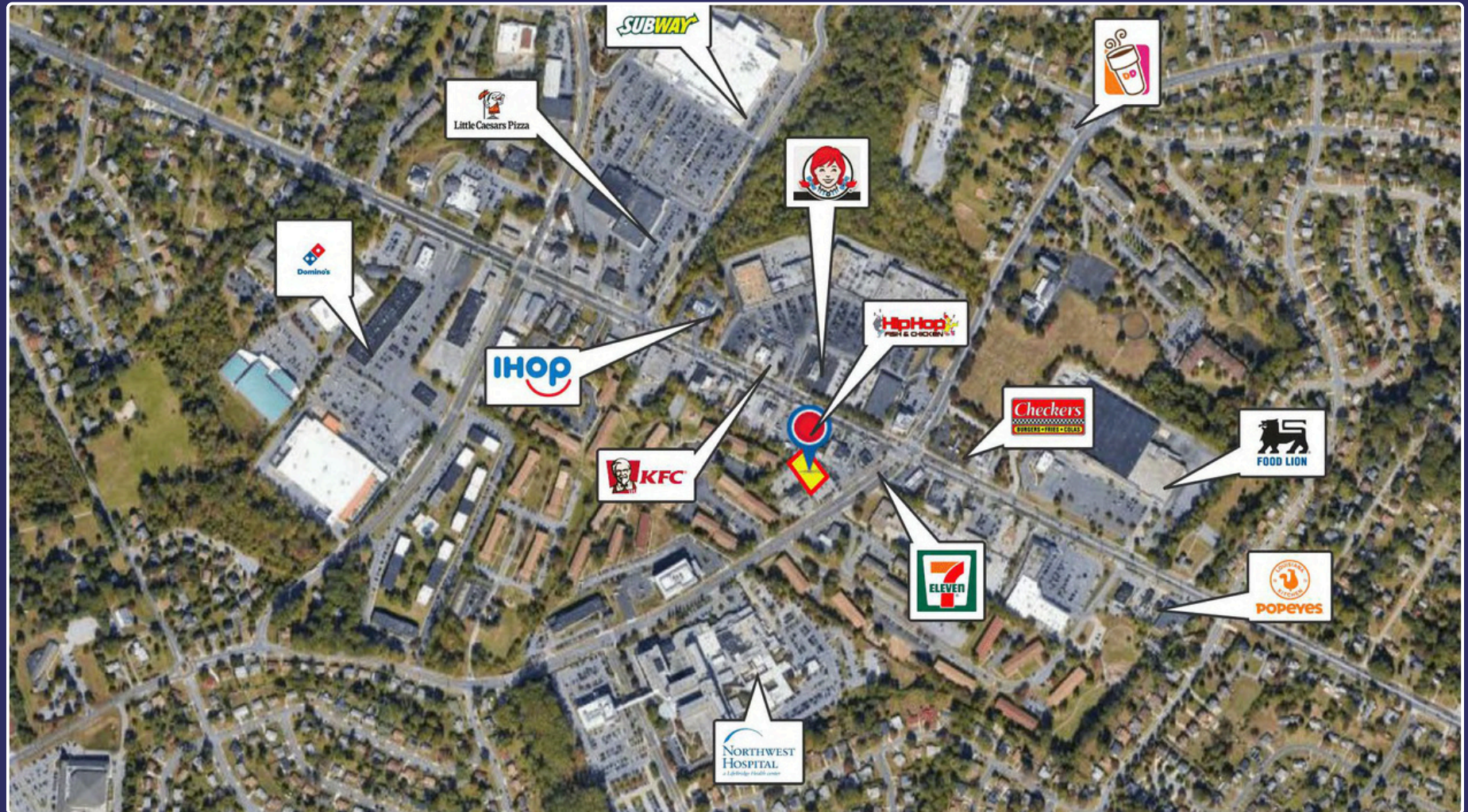


# Aerial Map



**Old Court Exchange** | 5310 Old Court Road, Randallstown, MD 21133

# Retail Map



Old Court Exchange | 5310 Old Court Road, Randallstown, MD 21133

**Coleman Tirone**

Associate

📞 O: 443.921.9328

✉️ ctirone@troutdaniel.com

**Contact Us**

📍 **30 E. Padonia Road, Suite 504**  
Timonium, MD 21093

🌐 **Visit Us**  
[troutdaniel.com](http://troutdaniel.com)

📞 **Call Us**  
410.435 .4004

The information contained in this marketing brochure has been obtained from sources we believe to be reliable; however, Trout Daniel & Associates LLC has not verified, and will not verify any of the information contained herein, nor has Trout Daniel & Associates LLC conducted any investigation regarding these matters and makes no warranty or representation whatsoever regarding the accuracy or completeness of the information provided. An agent indicated by an asterisk (\*) has a direct or indirect ownership interest in this property.