

**1 Lower Level Plan - Bldg "C"**  
 GROSS AREA = 4428 SQ FT  
 SCALE: 3/16" = 1'-0"

NOTES:  
 1. SEE NOTES ON SHEET A2.

**WALL SCHEDULE**

A	B	C	D	E	F	G	H	J	K
5/8" PLYWOOD SHEATHING 4 MIL POLY BARRIER 2x6 STUDS @ 16" OC R-19 BATT INSULATION 5/8" GYPSUM WALL BOARD	5/8" GYPSUM WALL BOARD 2x4 STUDS @ 16" OC R-II SOUND BLANKET 5/8" GYPSUM WALL BOARD	1 HOUR FIRE RATED FROM FLOOR TO FLOOR 5/8" GNB TYPE "X" 2x6 STUDS (SEE STRUC.) R-II SOUND BLANKET 5/8" GNB TYPE "X" UL DESIGN #U305	1 HOUR FIRE RATED FROM FLOOR TO FLOOR 5/8" GNB TYPE "X" 2x4 STUDS (SEE STRUC.) R-II SOUND BLANKET 5/8" GNB TYPE "X" UL DESIGN #U305	1 HOUR FIRE RATED FROM FLOOR TO FLOOR 5/8" GNB TYPE "X" 2x4 STUDS @ 16" OC R-II SOUND BLANKET 5/8" GYPSUM WALL BOARD UL DESIGN #U305	5/8" GYPSUM WALL BOARD 2x4 STUDS @ 16" OC R-II SOUND BLANKET 5/8" PLYWOOD SHEATHING 5/8" GYPSUM WALL BOARD	1 HOUR FIRE RATED FROM FLOOR TO FLOOR 5/8" GNB TYPE "X" 2x6 STUDS @ 16" OC R-20 BATT INSULATION 5/8" PLYWOOD SHEATHING 5/8" GNB TYPE "X" 5/8" GYPSUM WALL BOARD UL DESIGN #U305	5/8" GYPSUM WALL BOARD 2x6 STUDS @ 16" OC R-20 BATT INSULATION 5/8" PLYWOOD SHEATHING 5/8" GYPSUM WALL BOARD	1 HOUR FIRE RATED FROM FLOOR TO FLOOR 5/8" TYPE "X" GYPSUM SHEATHING EXTERIOR GRADE 4 MIL POLY BARRIER 2x6 STUDS @ 16" OC R-20 BATT INSULATION 5/8" GNB TYPE "X" UL DESIGN #U305 OR R6 ZIP SYSTEM (1/2"), 3/8" DENSGLASS FIREGUARD APPLIED TO STUD, 3" CLOSED CELL FOAM 5/8" TYPE X UL DESIGN U504 GA FILE NO. W9105	5/8" GYPSUM WALL BOARD 2x4 STUDS @ 16" OC R-7.5 CONTINUOUS INSULATION

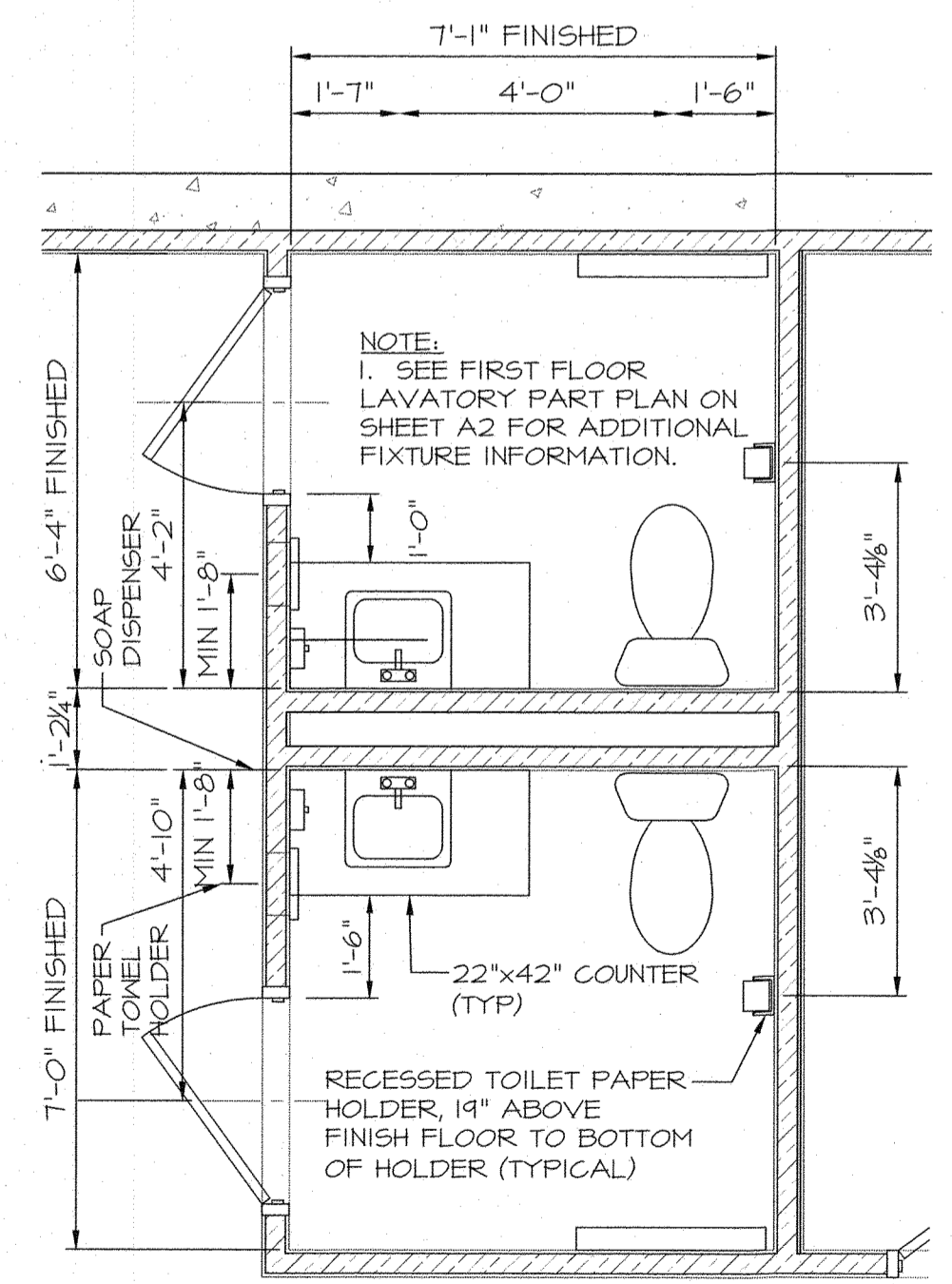
GYPSUM WALL BOARD MATERIALS  
 GYPSUM BOARD MATERIALS AND ACCESSORIES SHALL CONFORM TO THE FOLLOWING ASTM STANDARDS.

GYPSUM SHEATHING ASTM C 79  
 GYPSUM WALL BOARD ASTM C 36  
 EXTERIOR EXPOSURE ASTM C 1280

JOINT REINFORCING, TAPE AND COMPOUND  
 NAILS FOR GYPSUM BOARD  
 STEEL SCREWS

NOTE: SEE STRUCTURAL DRAWINGS FOR ALL PLYWOOD SHEARWALL NAILING REQUIREMENTS

ASTM C 474, C 475  
 ASTM C 514, F 547, F 1667  
 ASTM C 954, C 1002



**2 Lower Level Lavatory Part Plan**  
 SCALE: 3/8" = 1'-0"

ISS.	DATE	DESCRIPTION OF ISSUE	CHK.
1	6/17/23	PERMIT SET	
2	7/15/23	PERMIT SET	
3	9/21/23	CONSTRUCTION	
4	1/13/24	REVISION	

**EMANUEL ENGINEERING, INC.**  
 CIVIL AND STRUCTURAL CONSULTANTS  
 118 PORTSMOUTH AVE  
 STRATHAM, NH 03885  
 (603) 772-4400  
 (603) 772-4487

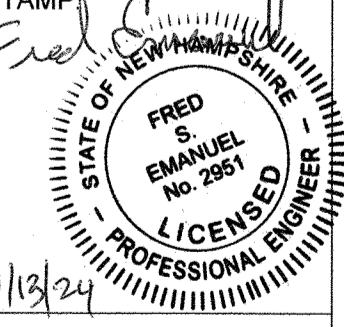
NH

**EMANUEL COMPANIES, INC.**  
 MILLBROOK OFFICE PARK  
 118 PORTSMOUTH AVE  
 BUILDING "C"

Stratham

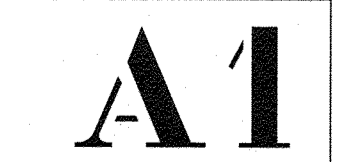
PREPARED FOR:  
 EMANUEL COMPANIES, INC  
 118 PORTSMOUTH AVENUE  
 SUITE A202  
 STRATHAM, NH 03885

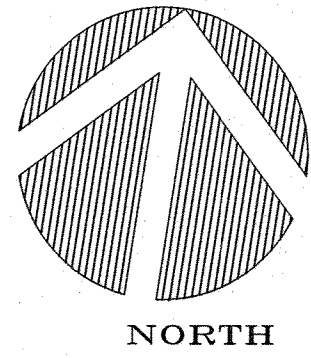
DESIGNED BY: FSE  
 CHECKED BY: RHG  
 DRAFTED BY: MRB  
 CHECKED BY: FSE, DE



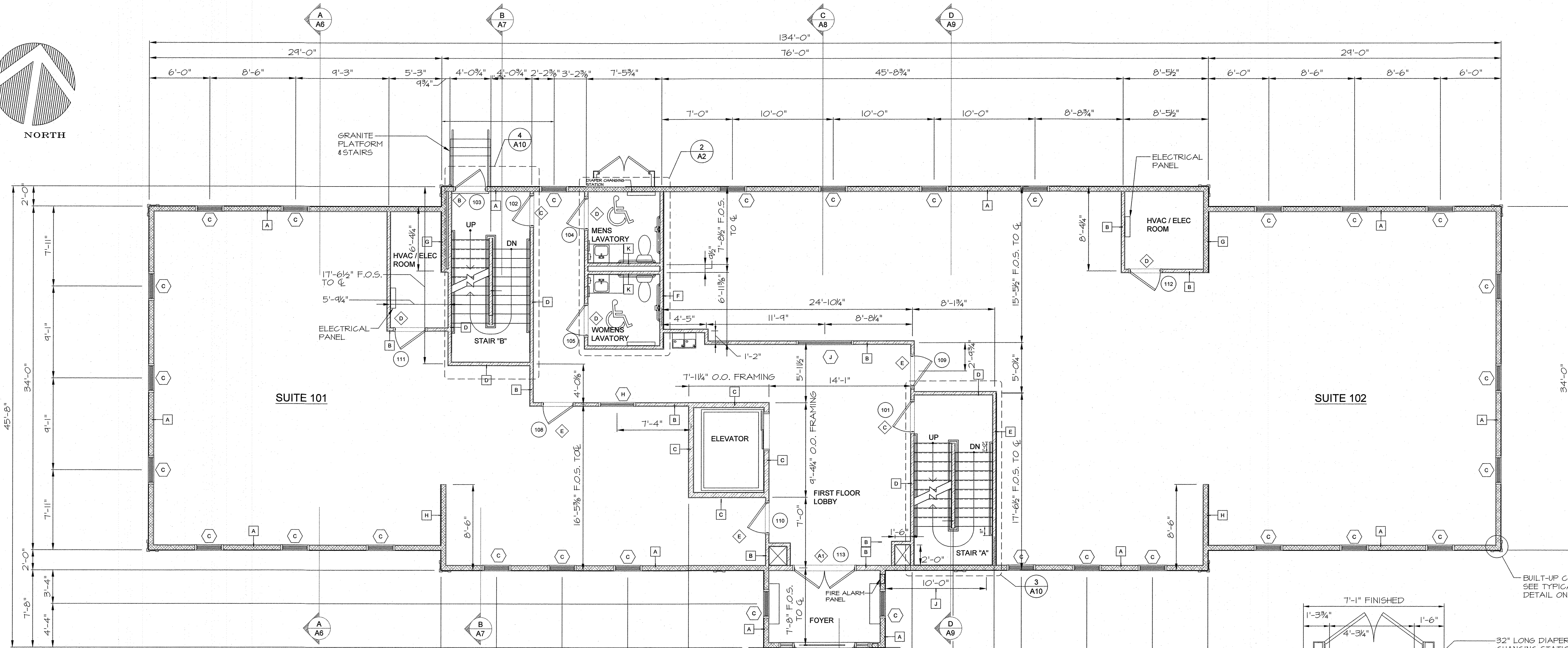
Lower Level Plan  
 Lavatory Part Plan

JOB #: 23-1020  
 SCALE: AS NOTED  
 DWG: A1 OF 12



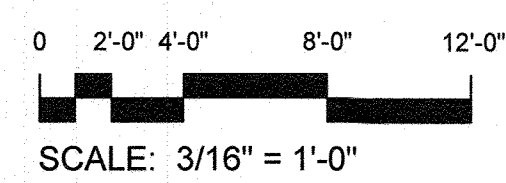


NORTH



# 1 First Floor Plan - Bldg "C"

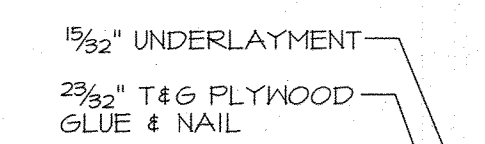
GROSS AREA = 4420 SQ FT



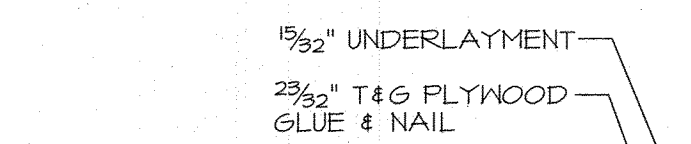
SCALE: 3/16" = 1'-0"

**NOTES:**

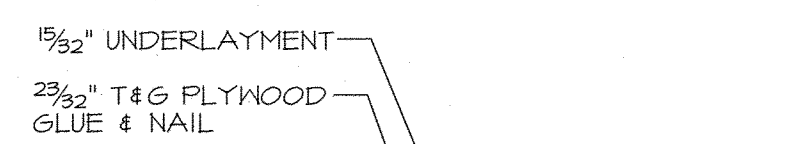
1. ALL INTERIOR DIMENSIONS TO WALLS ARE FROM CENTERLINE OF STUD WALL TO CENTERLINE OF STUD WALL. EXTERIOR BUILDING DIMENSIONS ARE FROM FACE OF STUD TO FACE OF STUD. WINDOW DIMENSIONS ARE TO CENTERLINE OF WINDOWS.
2. SEE SHEET A1 FOR WALL SCHEDULE.
3. SEE PROJECT MANUAL FOR DOOR, FRAME, AND INTERIOR FINISH SCHEDULES.
4. ALL WALKING SURFACES OF CORRIDORS AND COMPONENTS OF THE MEANS OF EGRESS SHALL UTILIZE SLIP RESISTANT SURFACES.
5. THE MINIMUM WIDTH OF ALL PASSAGEWAYS WITHIN SUITES AFTER INSTALLATION OF ALL FURNISHINGS SHALL BE 36 INCHES.
6. SAFETY GLAZING SHALL COMPLY WITH IBC 2010 SECTION 2406. GLAZING IN ALL HAZARDOUS LOCATIONS SHALL PASS THE TEST REQUIREMENTS OF CPSC 16 CFR 1201. SPECIFIC HAZARDOUS LOCATIONS SHALL BE AS OUTLINED IN IBC 2010 SECTION 2406.4.



UL DESIGN R1319  
(BASEMENT ELEVATOR LOBBY/ ELEVATOR MACHINE ROOMS)



UL DESIGN L501  
RATED CEILING SCHEDULE



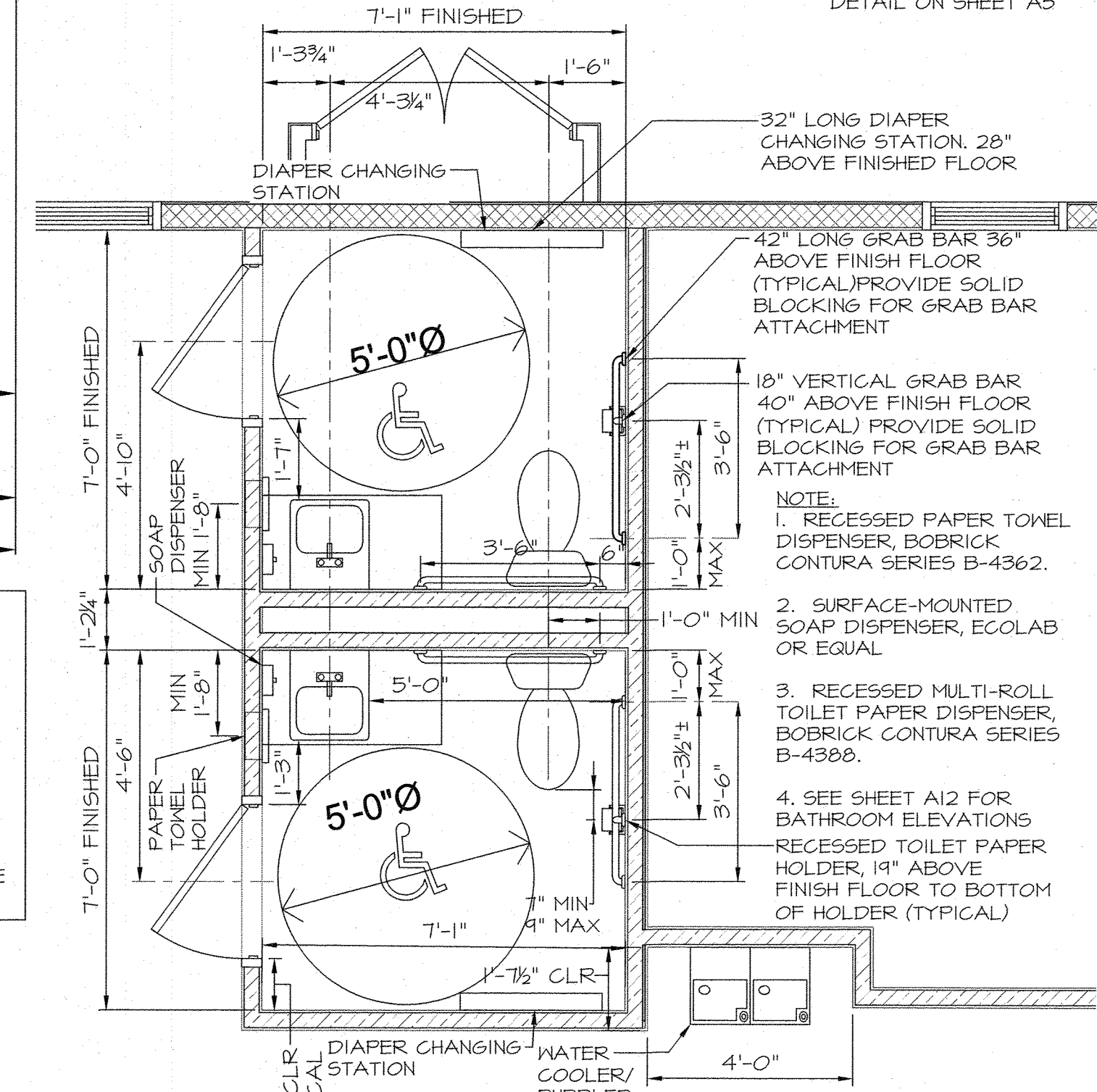
UL DESIGN R1319 AT ELEVATOR /CORRIDOR WALLS @ LOWER LEVEL CEILING



PROVIDE 2-LAYERS OF 5/8" GYPSUM WALL BOARD TYPE "X" BETWEEN "1" JOISTS TO UNDERSIDE OF SUBFLOOR ABOVE.

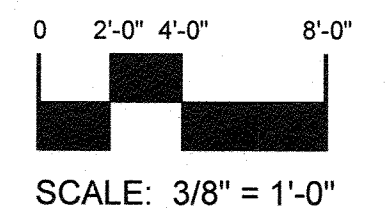
**LEGEND:**

- [X] INDICATES WALL TYPE (SEE SHEET A1)
- [X] INDICATES DOOR TYPE (SEE SHEET A1)
- [X] INDICATES WINDOW TYPE (SEE SHEET A1)
- (000) INDICATES DOOR NUMBER (SEE SCHEDULE ON SHEET A1)



# 2

## First Floor Lavatory Part Plan



SCALE: 3/8" = 1'-0"

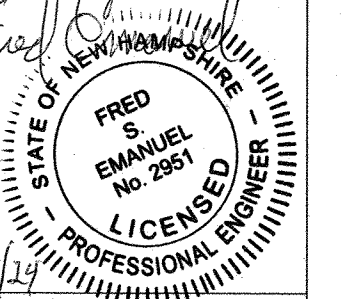
ISS.	DATE	DESCRIPTION OF ISSUE	CHK.
1	6/17/23	PERMIT SET	
2	7/15/23	PERMIT SET	
3	9/21/23	CONSTRUCTION	
4	1/13/24	REVISION	

**EMANUEL ENGINEERING, INC.**  
CIVIL AND STRUCTURAL CONSULTANTS  
118 PORTSMOUTH AVE.  
STRATHAM, NH 03885  
(603) 772-4400  
(603) 772-4487

**EMANUEL COMPANIES, INC.**  
MILLBROOK OFFICE PARK  
118 PORTSMOUTH AVE  
BUILDING "C"

PREPARED FOR:  
EMANUEL COMPANIES, INC  
118 PORTSMOUTH AVENUE  
SUITE A202  
STRATHAM, NH 03885

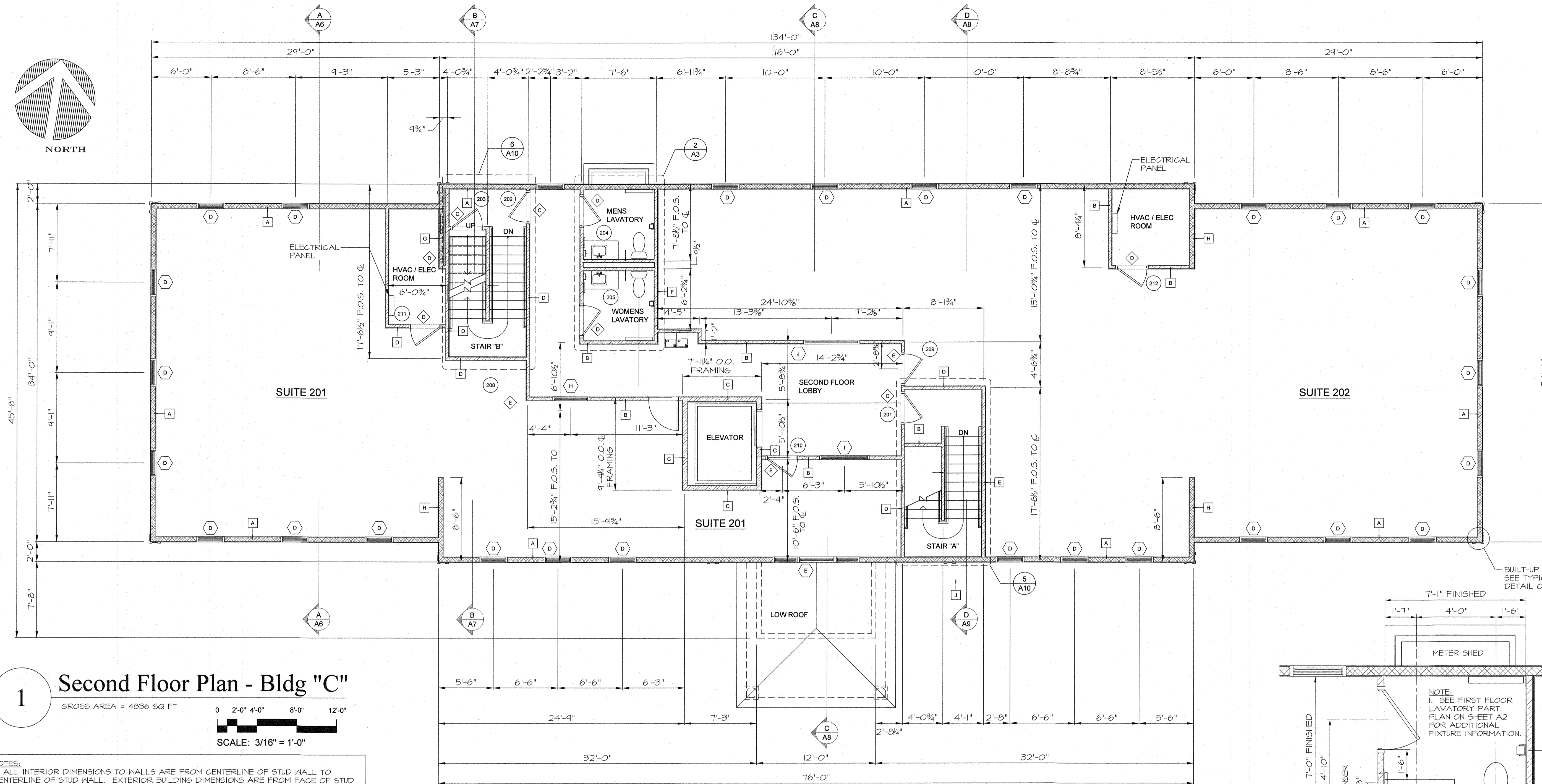
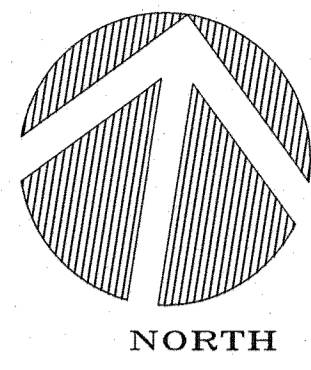
DESIGNED BY: FSE  
CHECKED BY: RHG  
DRAFTED BY: MRB  
CHECKED BY: FSE, DE



First Floor Plan  
Lavatory Part Plan

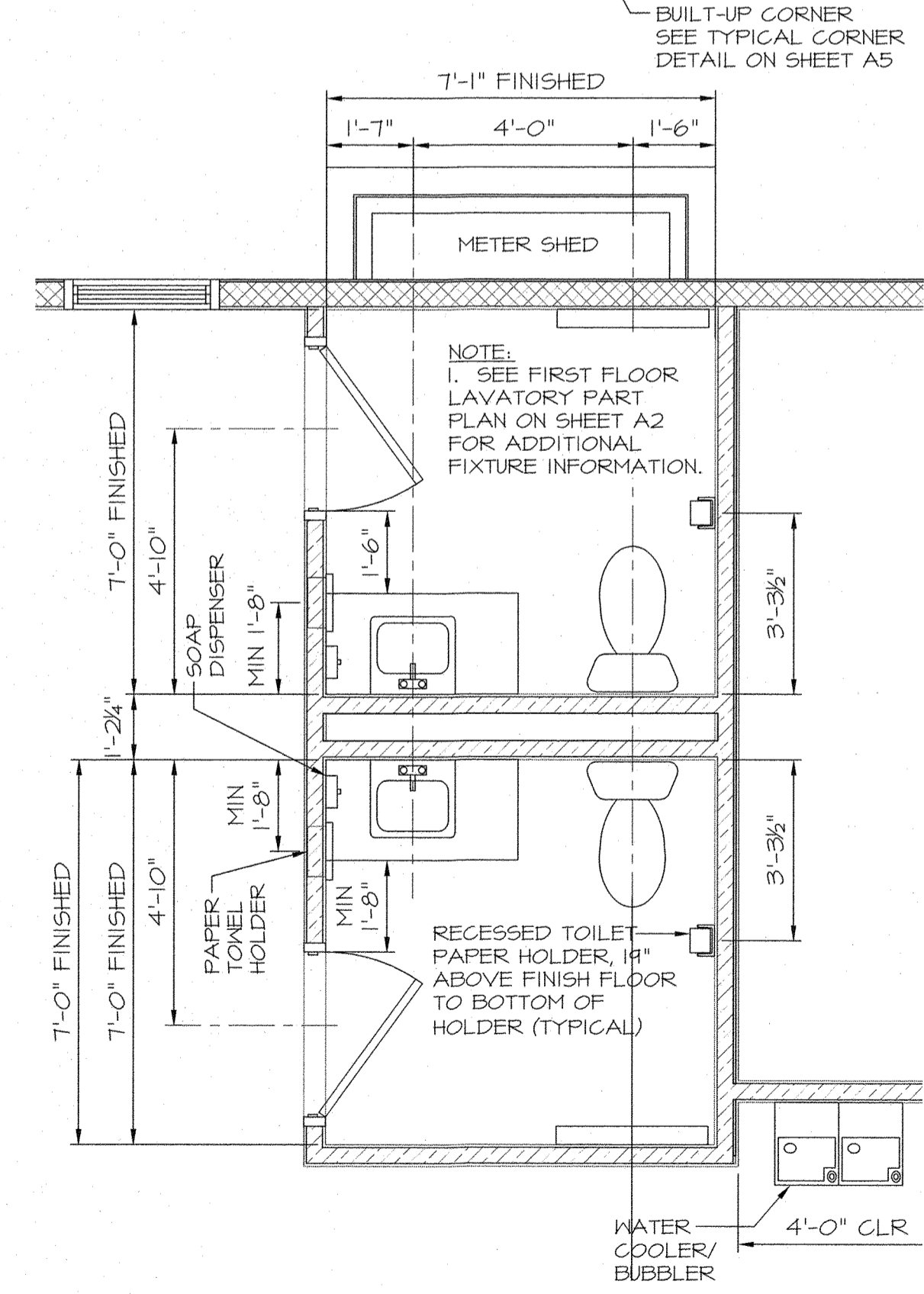
JOB #: 23-1020  
SCALE: AS NOTED  
DWG: A2 OF 12

**A2**



**1** Second Floor Plan - Bldg "C"  
 GROSS AREA = 4836 SQ FT  
 SCALE: 3/16" = 1'-0"

- NOTES:**
- ALL INTERIOR DIMENSIONS TO WALLS ARE FROM CENTERLINE OF STUD WALL TO CENTERLINE OF STUD WALL. EXTERIOR BUILDING DIMENSIONS ARE FROM FACE OF STUD TO FACE OF STUD. WINDOW DIMENSIONS ARE TO CENTERLINE OF WINDOWS.
  - SEE SHEET A1 FOR WALL SCHEDULE.
  - SEE PROJECT MANUAL FOR DOOR, FRAME, AND INTERIOR FINISH SCHEDULES.
  - ALL WALKING SURFACES OF CORRIDORS AND COMPONENTS OF THE MEANS OF EGRESS SHALL UTILIZE SLIP RESISTANT SURFACES.
  - THE MINIMUM WIDTH OF ALL PASSAGeways WITHIN SUITES AFTER INSTALLATION OF ALL FURNISHINGS SHALL BE 36 INCHES.
  - SAFETY GLAZING SHALL COMPLY WITH IBC 2003 SECTION 2406. GLAZING IN ALL HAZARDOUS LOCATIONS SHALL PASS THE TEST REQUIREMENTS OF CPSC 16 CFR 1201. SPECIFIC HAZARDOUS LOCATIONS SHALL BE AS OUTLINED IN IBC 2003 SECTION 2406.3.



**2** Second Floor Lavatory Part Plan  
 SCALE: 3/8" = 1'-0"

ISS.	DATE	DESCRIPTION OF ISSUE	CHK.
1	6/17/23	PERMIT SET	
2	7/15/23	PERMIT SET	
3	9/21/23	CONSTRUCTION	
4	1/13/24	REVISION	

**EMANUEL ENGINEERING, INC.**  
 CIVIL AND STRUCTURAL CONSULTANTS  
 118 PORTSMOUTH AVE  
 STRATHAM, NH 03885  
 (603) 772-4400  
 (603) 772-4487

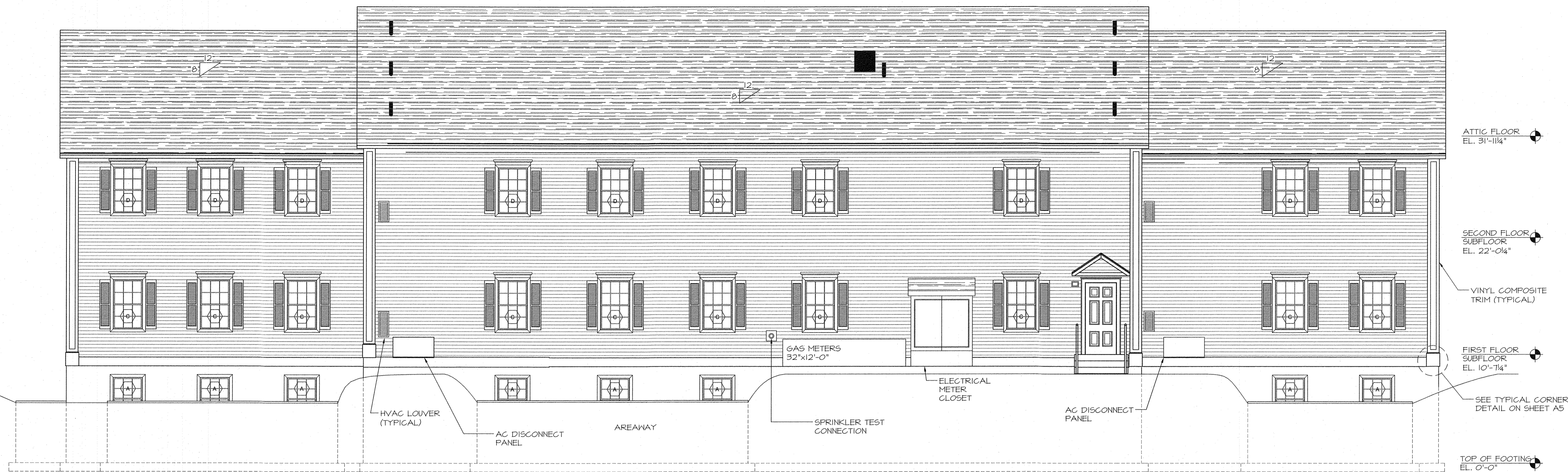
**EMANUEL COMPANIES, INC.**  
 MILLBROOK OFFICE PARK  
 118 PORTSMOUTH AVE  
 BUILDING "C"

Stratham  
 PREPARED FOR:  
 EMANUEL COMPANIES, INC  
 118 PORTSMOUTH AVENUE  
 SUITE A202  
 STRATHAM, NH 03885

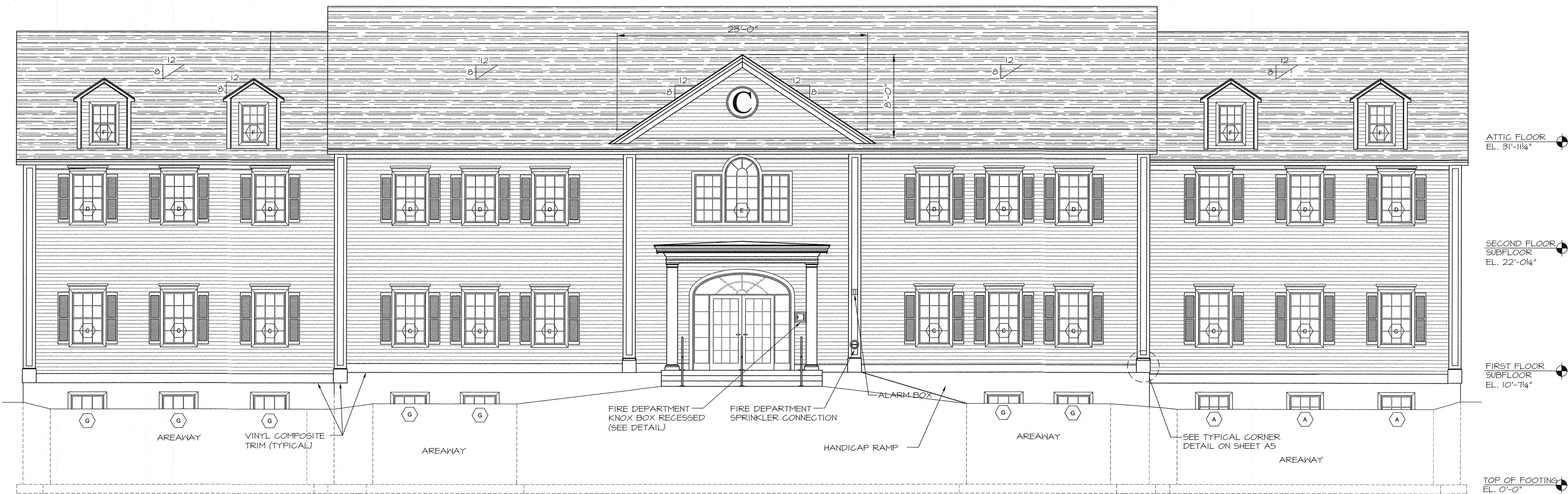
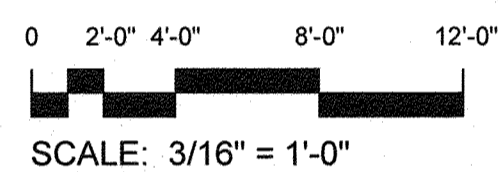
DESIGNED BY: FSE  
 CHECKED BY: RHG  
 DRAFTED BY: MRB  
 CHECKED BY: FSE, DE  
 STAMP:  
 FRED  
 EMANUEL  
 No. 2981  
 LICENSED  
 PROFESSIONAL ENGINEER

Second Floor Plan  
 Lavatory Part Plan  
 JOB #: 23-1020  
 SCALE: AS NOTED  
 DWG: A3 OF 12

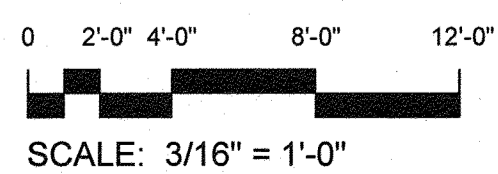
**A3**



**A** Rear Elevation - Bldg "C"



**B** Front Elevation - Bldg "C"



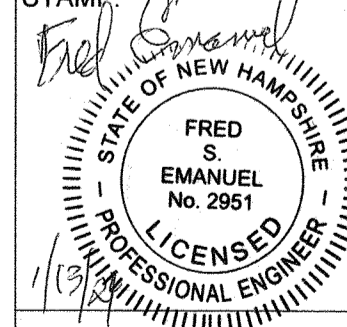
ISS	DATE	DESCRIPTION OF ISSUE	CHK
1	6/17/23	PERMIT SET	
2	7/15/23	PERMIT SET	
3	9/21/23	CONSTRUCTION	
4	1/13/24	REVISION	

**EMANUEL ENGINEERING, INC.**  
 CIVIL AND STRUCTURAL CONSULTANTS  
 118 PORTSMOUTH AVE.  
 STRATHAM, NH 03885  
 (603) 772-4400  
 (603) 772-4487

**EMANUEL COMPANIES, INC.**  
 MILLBROOK OFFICE PARK  
 118 PORTSMOUTH AVE  
 BUILDING "C"

PREPARED FOR:  
 EMANUEL COMPANIES, INC.  
 118 PORTSMOUTH AVENUE  
 SUITE A202  
 STRATHAM, NH 03885

DESIGNED BY: RHG  
 CHECKED BY: FSE  
 DRAFTED BY: MRB  
 CHECKED BY: FSE/  
 STAMP:



Front & Rear  
 Building Elevations

JOB #: 23-1020  
 SCALE: AS NOTED  
 DWG: A4 OF 12



NH

Stratham