

**LEGEND**

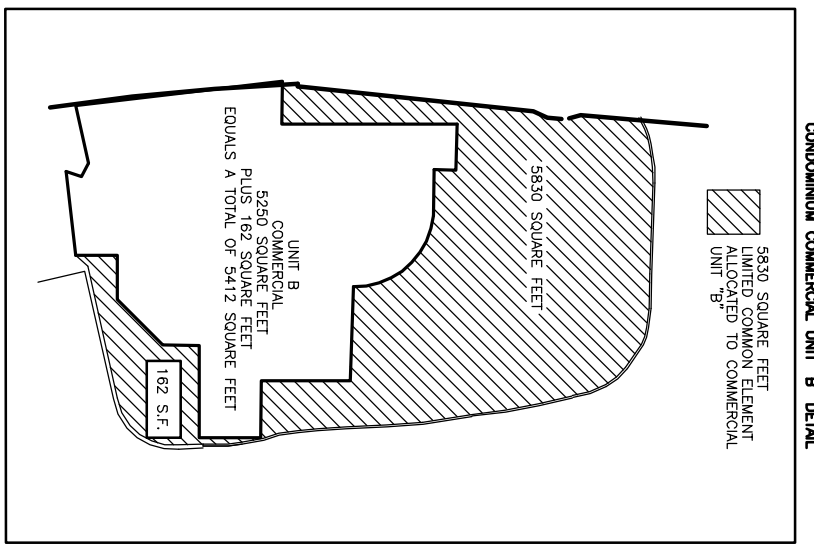
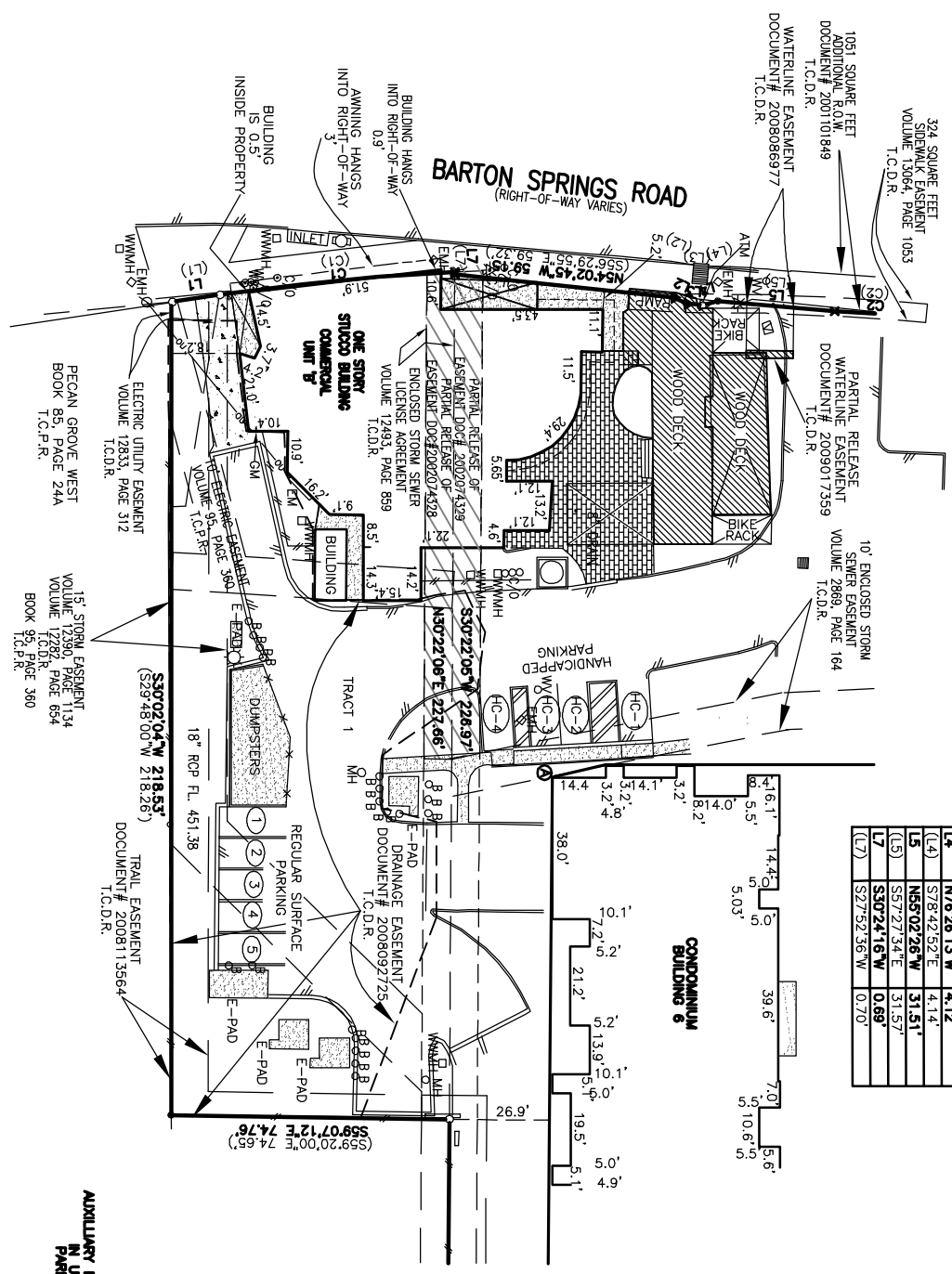
- 1/2" IRON ROD FOUND
- 3/4" IRON PIPE FOUND
- 1/2" IRON ROD SET WITH ALUMINIUM CAP
- DEAN WOODLEY RPLS 5086
- ▲ MAG NAIL FOUND
- ✕ IN CONCRETE FOUND
- ( ) RECORD INFORMATION
- U UTILITY POLE
- U UTILITY POLE
- EDGE OF ASPHALT
- OVERHEAD UTILITY
- CONCRETE
- TILE PATIO
- COVERED AREA
- WY WATER VALVE
- MH MANHOLE
- EMH ELECTRIC MANHOLE
- WM WATER METER
- C/O CLEAN OUT
- WMWH WASTEWATER MANHOLE
- ← GUY WIRE
- GM GAS METER
- EM ELECTRIC METER
- HANDICAPPED PARKING SIGN
- STONE FOUNTAIN
- PAVERS
- WOOD DECK
- GRAVEL AREA
- STONE FOUNTAIN
- LIGHT POLE
- FIRE HYDRANT
- BOLLARD
- VAULT
- TRAFFIC LIGHT POLE
- HC HANDICAP PARKING
- CHAIN FENCE
- WOOD FENCE
- METAL FENCE
- E-PAD ELECTRIC PAD
- ① MATCH POINT FOR PARKING GARAGE
- ② 57 DEDICATED RESTAURANT PARKING SPACES IN GARAGE
- ③ 9 DEDICATED SURFACE RESTAURANT PARKING SPACES, (G) REGULAR, (4 HC) DOCUMENT# 201110184, T.C.D.R. TRAVIS COUNTY DEED RECORDS
- T.C.D.R. TRAVIS COUNTY PLAT RECORDS

**CURVE TABLE**

| No. | Radius | Chord Length | Chord Bearing |
|-----|--------|--------------|---------------|
| (1) | 673.19 | 63.56        | N83°27'56"W   |
| (2) | 309.50 | 22.18        | N67°05'32"W   |
| (3) | 309.50 | 22.26        | S59°31'10"E   |

**LINE TABLE**

| No.  | Bearing     | Distance |
|------|-------------|----------|
| (1)  | N69°32'05"W | 12.98'   |
| (2)  | N69°45'00"W | 12.98'   |
| (3)  | N54°22'31"W | 3.88'    |
| (4)  | S36°12'17"E | 3.90'    |
| (5)  | N54°37'13"W | 4.57'    |
| (6)  | S57°27'36"E | 4.38'    |
| (7)  | N76°26'13"W | 4.12'    |
| (8)  | S78°42'52"E | 4.14'    |
| (9)  | N65°02'26"W | 31.51'   |
| (10) | S57°27'34"E | 31.87'   |
| (11) | S30°24'16"W | 0.89'    |
| (12) | S27°52'36"W | 0.70'    |



- NOTES:**
1. ANY EASEMENTS AND BUILDING LINES AS PER TITLE COMMITMENT GF# 1120758-BOK AS SUPPLIED BY CHICAGO TITLE INSURANCE COMPANY, DATED DECEMBER 16, 2011. NO ADDITIONAL RESEARCH WAS DONE BY LIVE OAK SURVEYING FOR ANY EASEMENTS, RESTRICTIONS, OR CONDITIONS OF RECORD WHICH MAY AFFECT THIS PROPERTY.
  2. THE UNDERGROUND PARKING AREA DRAWING IS INTENDED TO SHOW THE PARKING SPACES AND DOES NOT REPRESENT ALL OTHER STRUCTURES IN GARAGE.

**TITLE COMMITMENT NOTE**  
THIS SURVEY CONTAINS THE INFORMATION SHOWN IN SCHEDULE B OF CHICAGO TITLE INSURANCE COMPANY, TITLE REPORT GF# 1120758-BOK, DATED DECEMBER 16, 2011 WITH THE FOLLOWING CLARIFICATIONS:  
SEE RESTRICTIONS AND CONDITIONS OF RECORD IN VOLUME 12971, PAGE 159  
DOCUMENT# 2010119223, DOCUMENT# 2011079432, DOCUMENT# 2010126463, DOCUMENT# 2010126464, DOCUMENT# 201110181, DOCUMENT# 201110184, DOCUMENT# 2004208828, T.C.D.R. BOOK 94, PAGE 360 T.C.P.R.

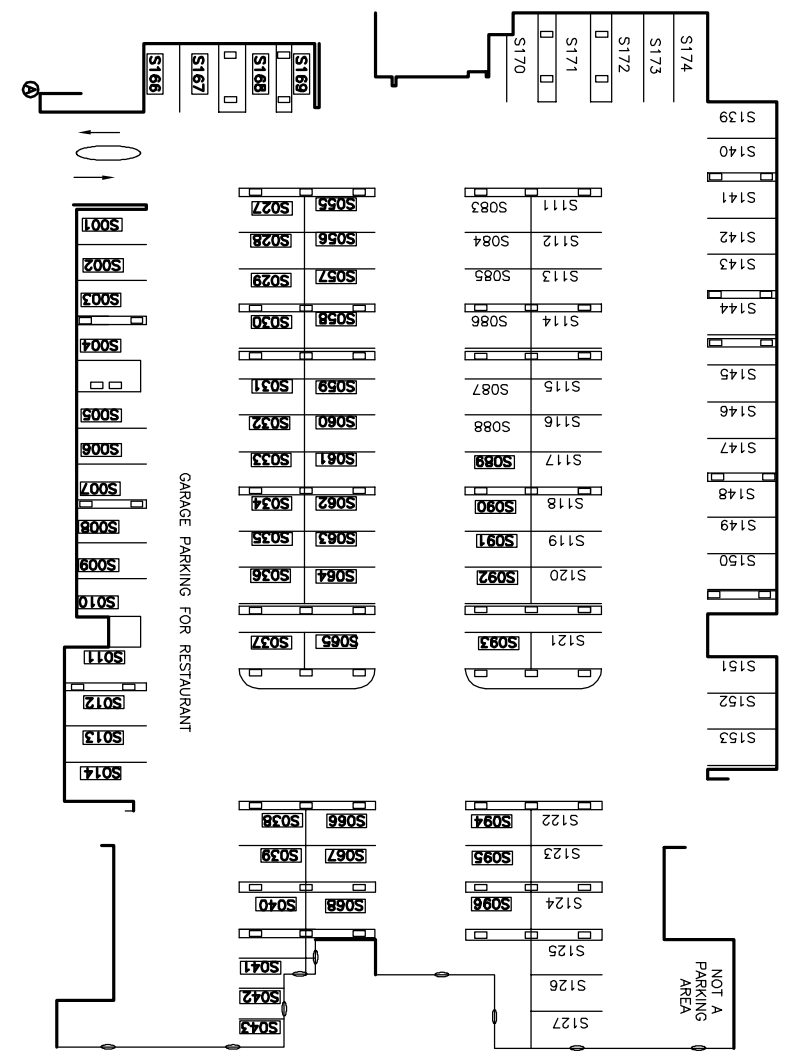
- 10a. PUBLIC/PRIVATE UTILITIES, STREETS, DRIVEWAYS, WALKWAYS, SEWERS, ACCESS & DRAINAGE OVER & ACROSS COMMON AREA INGRESS/EGRESS FOR INSTALLATION, MAINTENANCE. BLANKET TYPE DOCUMENT# 2010119223 AND 2011079432 T.C.D.R. DOCUMENT# 2010119223, PAGE 360 T.C.P.R. AS SHOWN.**
- 10b. INGRESS/EGRESS EASEMENTS BETWEEN TRACT 1 AND TRACT 2 DOCUMENT# 200408828 T.C.D.R. NOT DETERMINED BY THIS SURVEY.**
- 10c. STORM SEWER EASEMENT, VOLUME 824, PAGE 572 T.C.D.R., BOOK 95, PAGE 360 T.C.P.R., PARTIAL EASEMENT RELEASE DOCUMENT# 2002074328 T.C.D.R. AS SHOWN.**
- 10d. STORM SEWER EASEMENT, VOLUME 828, PAGE 87 T.C.D.R., PARTIAL EASEMENT RELEASE DOCUMENT# 2002074329 T.C.D.R. AS SHOWN.**
- 10e. ENCLOSED STORM SEWER EASEMENT VOLUME 2869, PAGE 85, T.C.D.R. AS SHOWN.**
- 10f. 15' STORM SEWER EASEMENT, VOLUME 12390, PAGE 1134 T.C.D.R. AND BOOK 95, PAGE 360 T.C.P.R. AS SHOWN.**
- 10g. ELECTRIC UTILITY EASEMENT VOLUME 12833, PAGE 312, T.C.D.R. AS SHOWN.**
- 10h. SIDEWALK EASEMENT, VOLUME 13064, PAGE 1053, PAGE 1053, T.C.D.R. AS SHOWN.**
- 10i. 3X3 WATER EASEMENT, DOCUMENT 2001101849 T.C.D.R. AS SHOWN.**
- 10j. RIGHT OF ENTRY AND POSSESSION, VOLUME 12282, PAGE 654 T.C.D.R. AS SHOWN.**
- 10k. ENCLOSED STORM SEWER LICENSE AGREEMENT, VOLUME 12493, PAGE 859 T.C.D.R. AS SHOWN.**

TO: URS, LLC A TEXAS LIMITED LIABILITY COMPANY  
SAFE CAPITAL BANK CHICAGO TITLE INSURANCE COMPANY, INDEPENDENCE TITLE COMPANY.  
GF# 1120758-BOK

THE UNDERSIGNED DOES HEREBY CERTIFY THAT THIS SURVEY WAS MADE ON THE GROUND OF THE PROPERTY SHOWN HEREON AND IS TRUE AND CORRECT TO THE BEST OF MY KNOWLEDGE AND THAT THERE ARE NO DISCREPANCIES, ENCROACHMENTS, OVERLAPPING OF IMPROVEMENTS, VISIBLE UTILITY LINE OR ROADS IN PLACE, EXCEPT AS SHOWN HEREON, AND SAID PROPERTY ADJOINS A PUBLIC ROADWAY, EXCEPT AS SHOWN HEREON.

DEAN A. WOODLEY  
REGISTERED PROFESSIONAL  
LAND SURVEYOR NO. 5086

DATE



©COPYRIGHT DEAN WOODLEY, 2012  
ALL RIGHTS RESERVED

CLIENT: RICK ENGEL  
FIELD BOOK: 122, PAGE: 29  
DRAWN BY: P.M.W.  
PROJECT NO.: 855-07-09\_U  
DATE: 12-28-2011  
FILE: 8550709\_U.DWG

**SURVEY OF**  
**UNIT "B", BARTONPLACE CONDOMINIUMS, A CONDOMINIUM PROJECT IN TRAVIS COUNTY TOGETHER WITH THE LIMITED COMMON ELEMENTS AND UNDIVIDED INTEREST IN AND TO THE COMMON ELEMENTS, AS DEFINED IN THAT DECLARATION**  
**RECORDED IN DOCUMENT# 2010119223 AND AS AMENDED IN DOCUMENT# 2011079432 TRAVIS COUNTY DEED RECORDS, TRAVIS COUNTY, TEXAS**  
**TRACT 1: LOT ONE (1) BLOCK "A", GOOD EATS A SUBDIVISION AS RECORDED IN BOOK 95, PAGE 360 TRAVIS COUNTY, TEXAS**

**LIVE OAK SURVEYING**  
12421 WYCLIFF LANE  
AUSTIN, TX 78727  
(512) 837-1018  
(512) 837-9102 FAX