

PALM LAKE AT TAMPA PALMS

15310 Amberly Drive
Tampa, FL 33647

Class 'A' Office Space For Lease



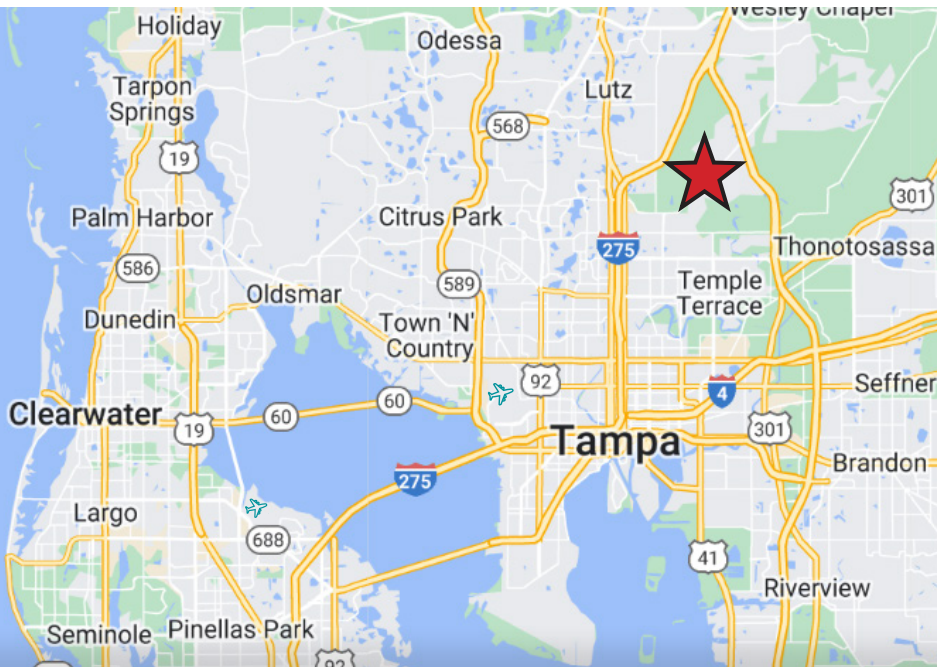
AVAILABLE SUITES

| SUITE | SIZE (RSF) | AVAILABLE |
|-------|---------------|-----------|
| 190 | 1,206 | 9/01/2026 |
| 195 | 2,097 | Now |
| 210 | 978 - 4,158 | Now |
| 220 | 3,180 - 4,158 | Now |
| 330 | 1,181 | Now |

Contiguous Suites

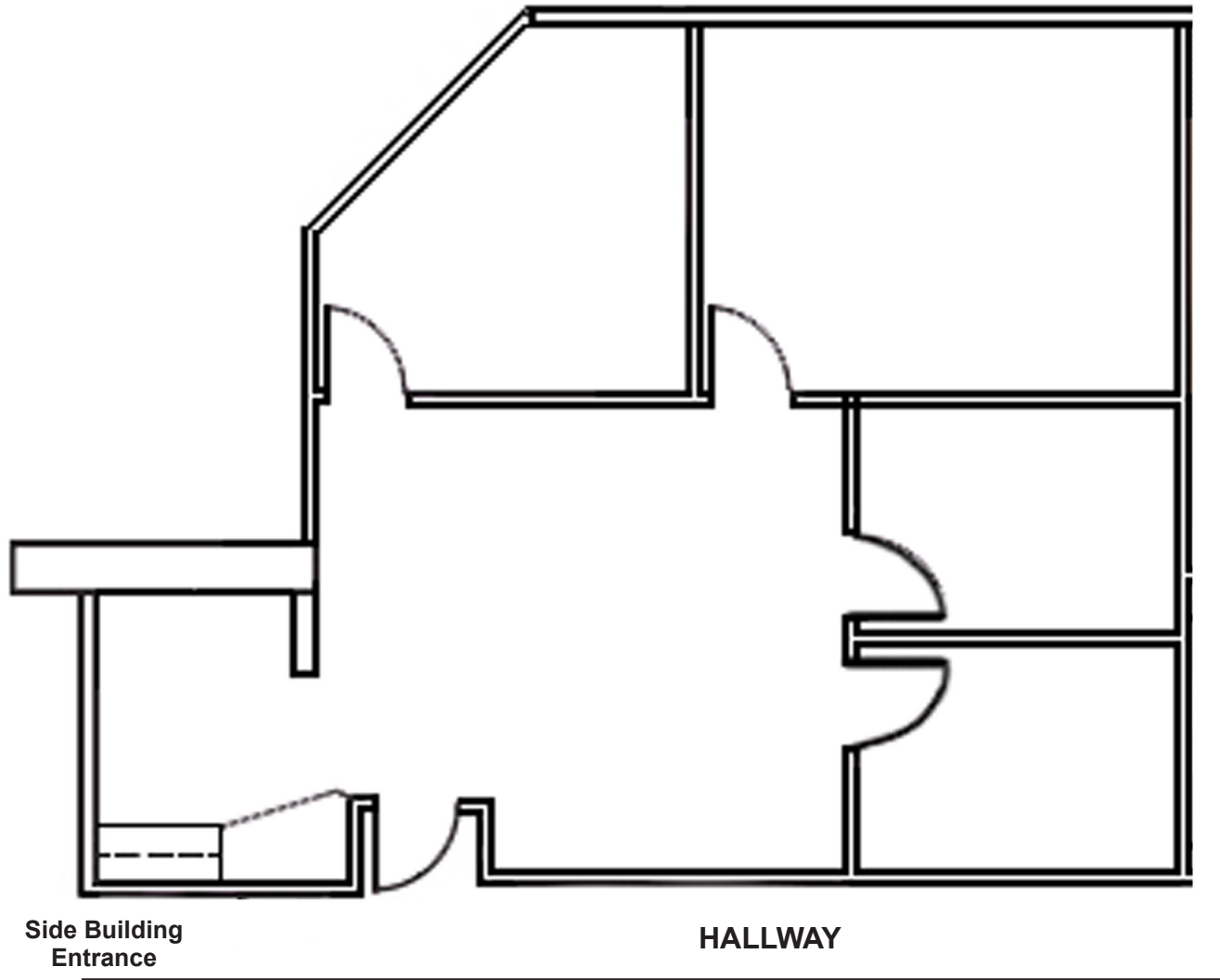
PROPERTY HIGHLIGHTS

- Move-in ready condition with upgraded finishes & glass wall inserts
- Spectacular view of lake & cascading water feature
- Motion-activated light system
- Free parking at a ratio of 4 spaces / 1,000 SF leased
- Secure building with 24/7 tenant access via Regus
- On-site property management
- Convenient access to I-75, I-275, University of South Florida, and Florida Hospital-Tampa

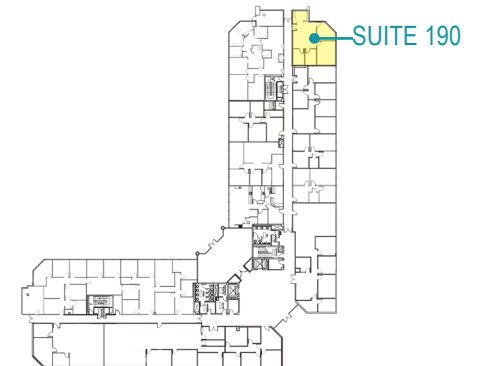


SUITE 190: 1,206 RSF

Available 9/01/2026

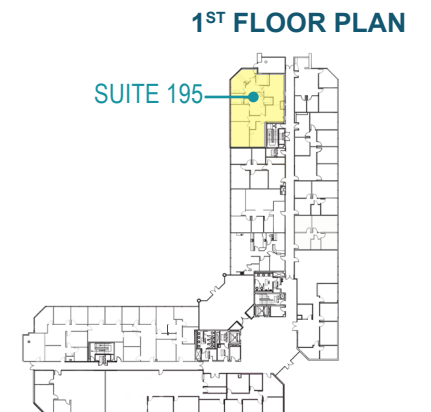
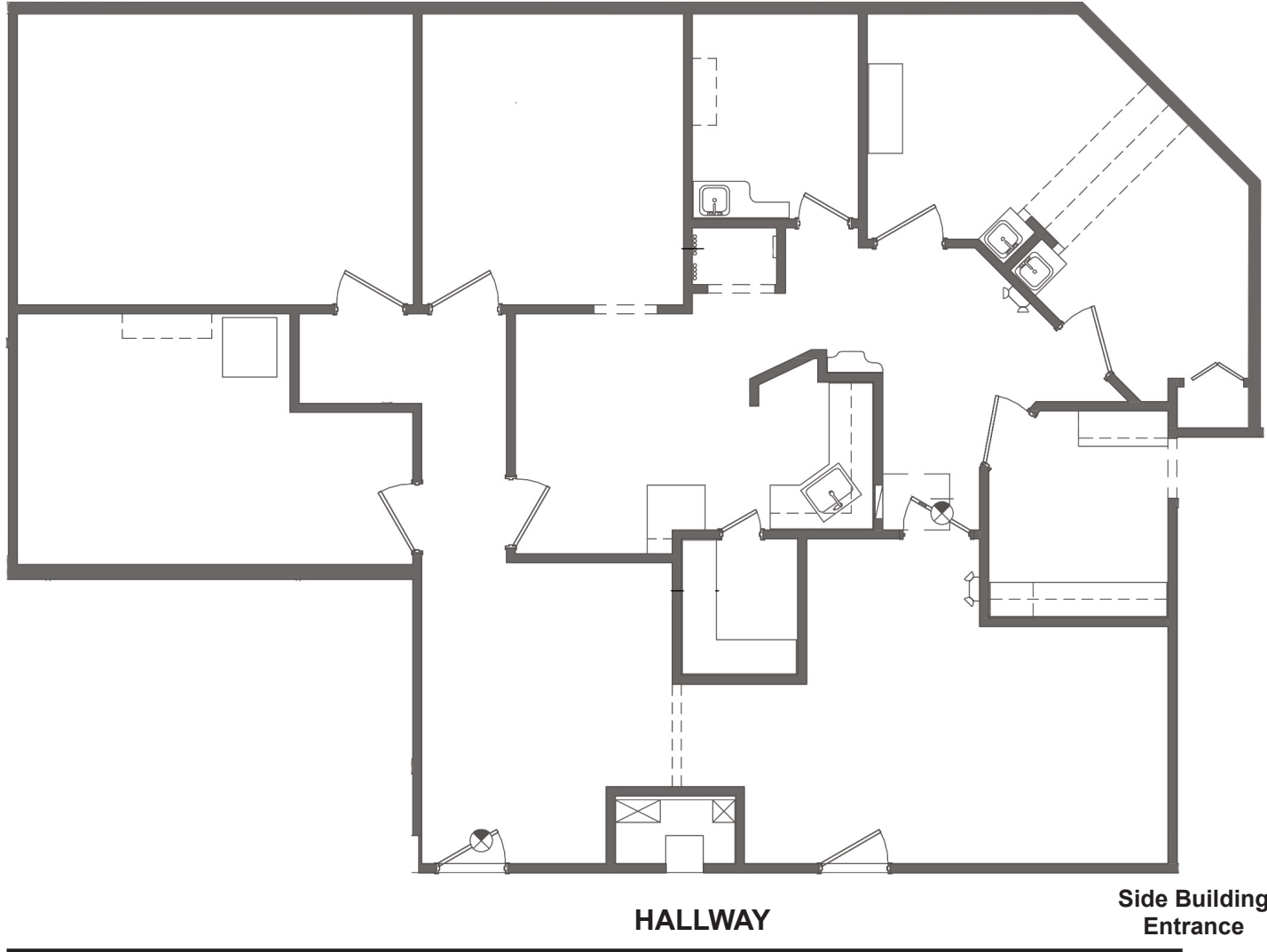


1ST FLOOR PLAN

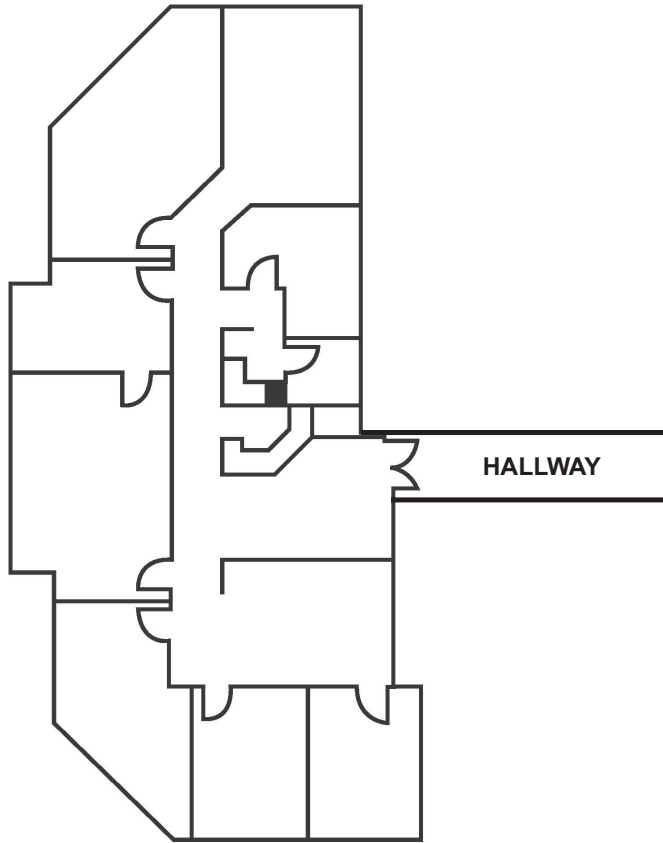


SUITE 195: 2,097 RSF

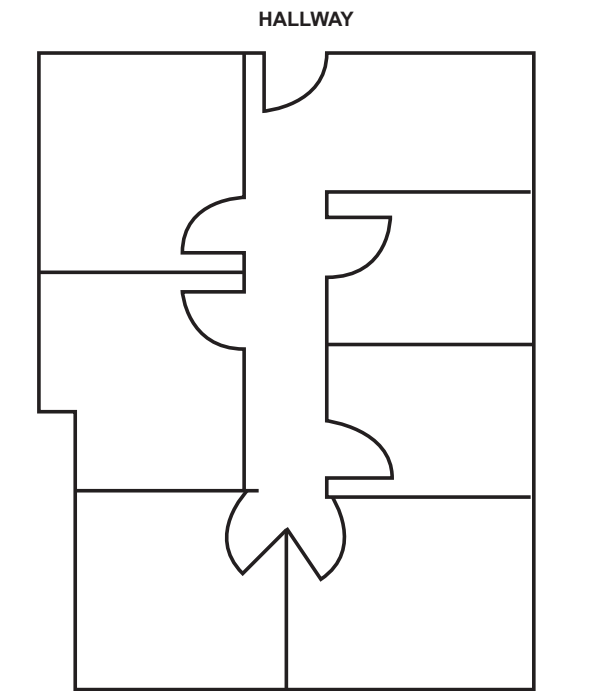
Great For Medical Use - Prior Dental Surgery Suite



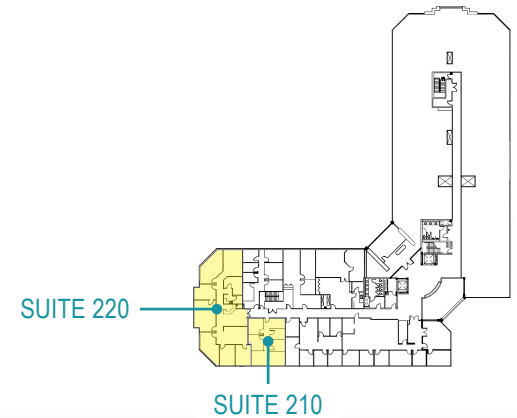
SUITE 220: 3,180 RSF



SUITE 210: 978 RSF

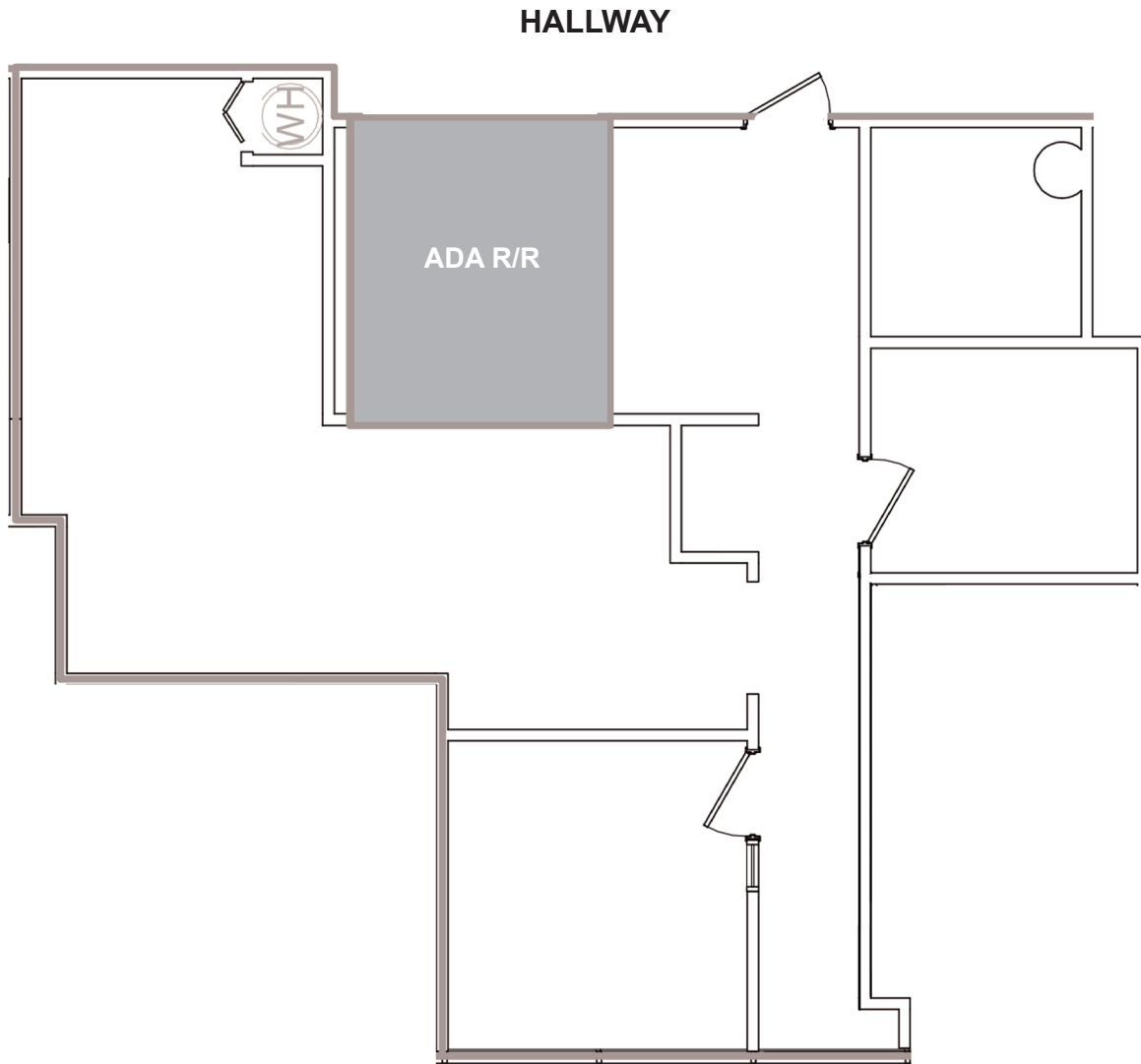


2ND FLOOR PLAN



Suites 210 & 220 are contiguous, offering up to 4,158 RSF

SUITE 330: 1,181 RSF



3RD FLOOR PLAN

