

3901 US ROUTE 11 CORTLAND, NY 13045

INDUSTRIAL PROPERTY FOR SALE OR LEASE

JOSHUA W. PODKAMINER, SIOR, CCIM
315.423.9390
jwp@jwpcommercial.com

J|W|P
COMMERCIAL

FOR SALE OR LEASE | 3901 US ROUTE 11
EXECUTIVE SUMMARY



OFFERING SUMMARY

Available SF:	27,792 SF
Office Space:	13,260 SF
Warehouse:	14,532 SF
Year Built:	2009
Lot Size:	4.13 Acres
Zoning:	Industrial I-2
Roof:	Standing seam, metal
Construction:	Steel frame, insulated
Lighting:	LED
Power	277/240 three-phase

PROPERTY OVERVIEW

27,792 SF of high-quality warehouse and class-A office space in Cortland, NY with convenient access from Interstate 81.

PROPERTY HIGHLIGHTS

- Standalone building
- 64 onsite parking spaces
- 2,500 SF training center with partition
- 18'4" clear height at peak, 15'6" at eaves
- 24' column spacing
- Three (3) dock height doors with levelers
- One (1) 10'x10' ground level door
- Water supply: Private well with option for public water

JOSHUA W. PODKAMINER, SIOR, CCIM
315.423.9390
jwp@jwpcommercial.com

FOR SALE OR LEASE | 3901 US ROUTE 11
ADDITIONAL PHOTOS

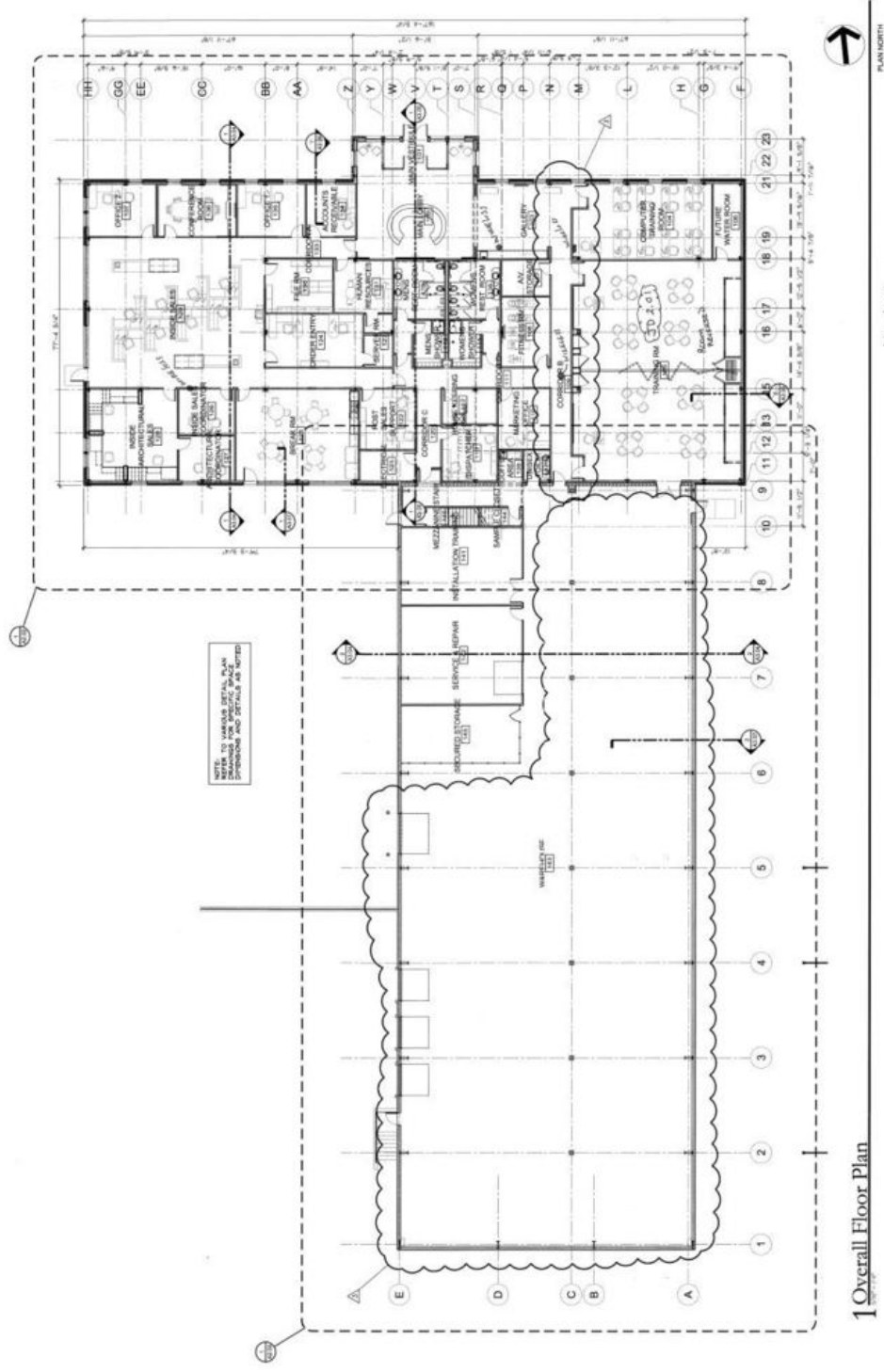
J|W|P
COMMERCIAL



JOSHUA W. PODKAMINER, SIOR, CCIM
315.423.9390
jwp@jwpcommercial.com

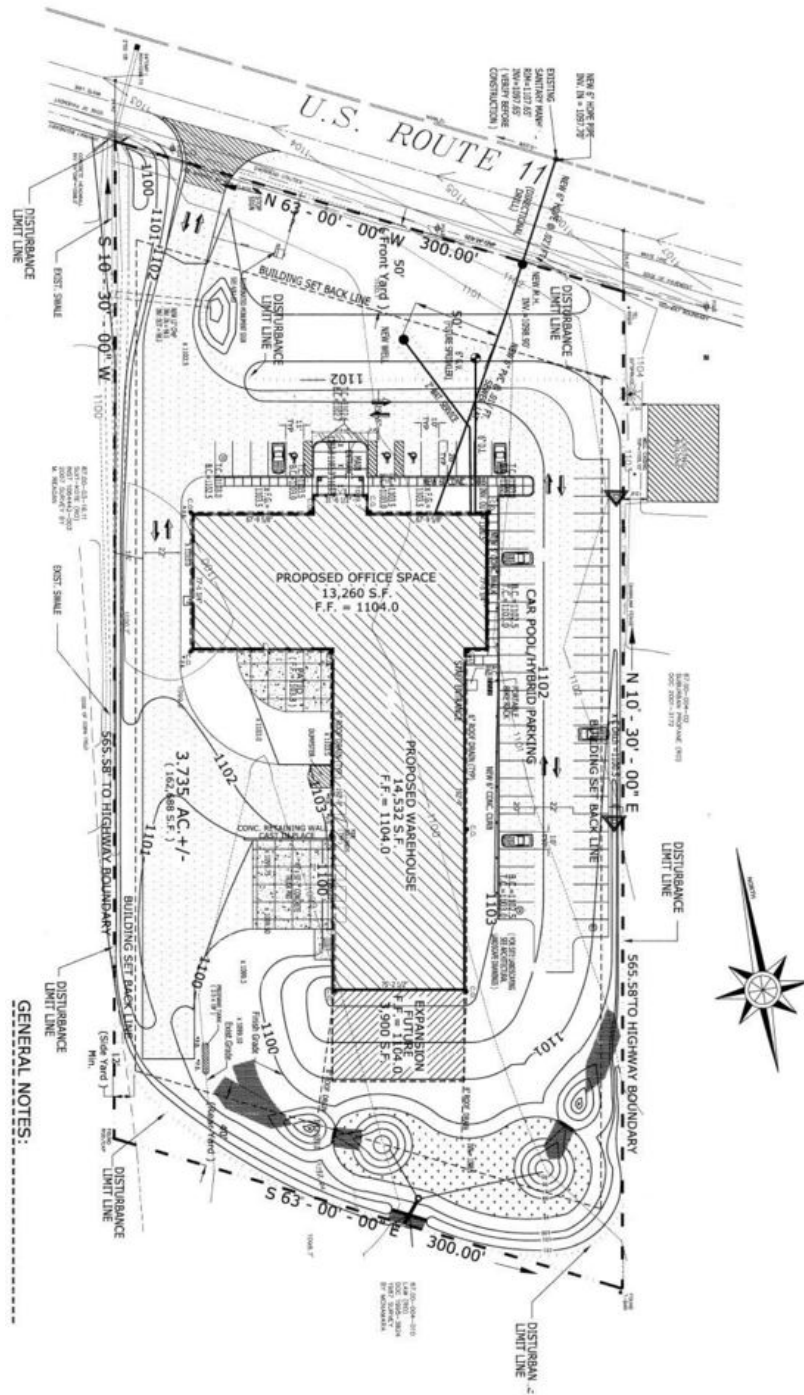
No warranty, express or implied, is made as to the accuracy of any information contained herein. All information contained herein is from sources deemed to be reliable and is submitted subject to errors, omissions, changes in price or other conditions, and withdrawal without notice. Principals, and agents for principals, should not rely solely upon the information contained herein.

FLOOR PLANS



1 Overall Floor Plan

FOR SALE OR LEASE | 3901 US ROUTE 11
SITE PLAN

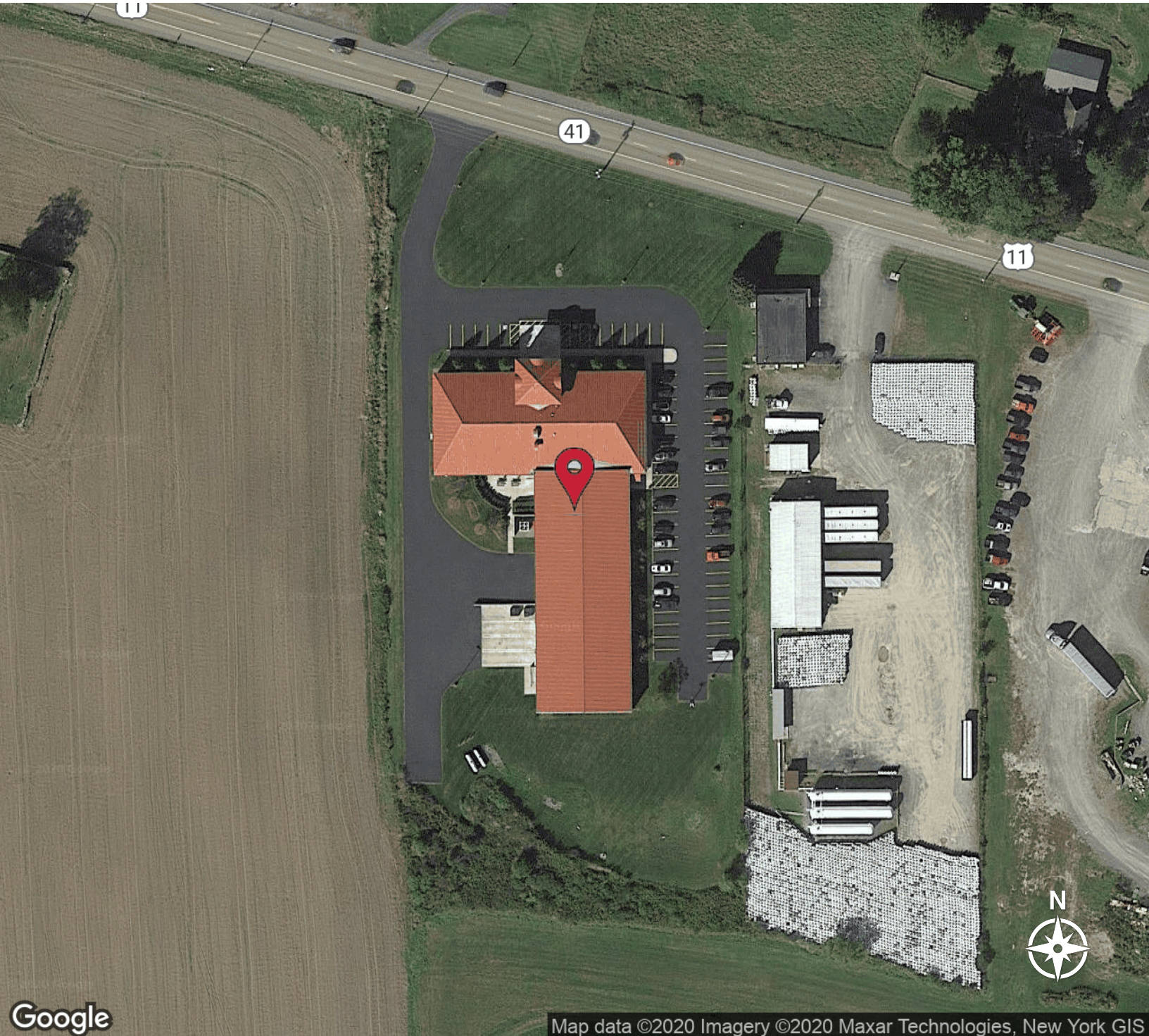


GENERAL NOTES:

JOSHUA W. PODKAMINER, SIOR, CCIM
315.423.9390
jwp@jwpcommercial.com

FOR SALE OR LEASE | 3901 US ROUTE 11

AERIAL MAPS



Google

Map data ©2020 Imagery ©2020 Maxar Technologies, New York GIS

JOSHUA W. PODKAMINER, SIOR, CCIM
315.423.9390
jwp@jwpcommercial.com

No warranty, express or implied, is made as to the accuracy of any information contained herein. All information contained herein is from sources deemed to be reliable and is submitted subject to errors, omissions, changes in price or other conditions, and withdrawal without notice. Principals, and agents for principals, should not rely solely upon the information contained herein.

FOR SALE OR LEASE | 3901 US ROUTE 11

RETAILER MAP



JOSHUA W. PODKAMINER, SIOR, CCIM
315.423.9390
jwp@jwpcommercial.com

No warranty, express or implied, is made as to the accuracy of any information contained herein. All information contained herein is from sources deemed to be reliable and is submitted subject to errors, omissions, changes in price or other conditions, and withdrawal without notice. Principals, and agents for principals, should not rely solely upon the information contained herein.

FOR SALE OR LEASE | 3901 US ROUTE 11
RETAILER MAP



Google

Imagery ©2020 TerraMetrics

JOSHUA W. PODKAMINER, SIOR, CCIM
315.423.9390
jwp@jwpcommercial.com

No warranty, express or implied, is made as to the accuracy of any information contained herein. All information contained herein is from sources deemed to be reliable and is submitted subject to errors, omissions, changes in price or other conditions, and withdrawal without notice. Principals, and agents for principals, should not rely solely upon the information contained herein.

FOR SALE OR LEASE | 3901 US ROUTE 11

EXTERIOR PHOTOS



JOSHUA W. PODKAMINER, SIOR, CCIM
315.423.9390
jwp@jwpcommercial.com

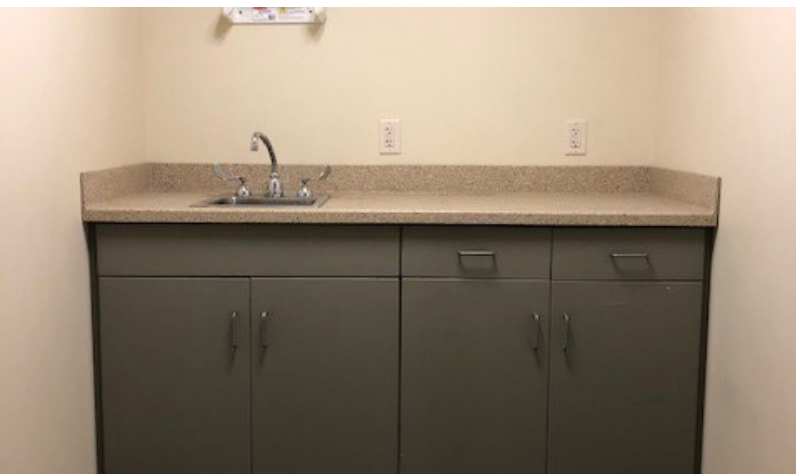
FOR SALE OR LEASE | 3901 US ROUTE 11
INTERIOR PHOTOS



JOSHUA W. PODKAMINER, SIOR, CCIM
315.423.9390
jwp@jwpcommercial.com

FOR SALE OR LEASE | 3901 US ROUTE 11

WAREHOUSE PHOTOS



JOSHUA W. PODKAMINER, SIOR, CCIM
315.423.9390
jwp@jwpcommercial.com

FOR LEASE | 3901 US ROUTE 11

TRAINING/CONFERENCE CENTER



JOSHUA W. PODKAMINER, SIOR, CCIM
315.423.9390
jwp@jwpcommercial.com

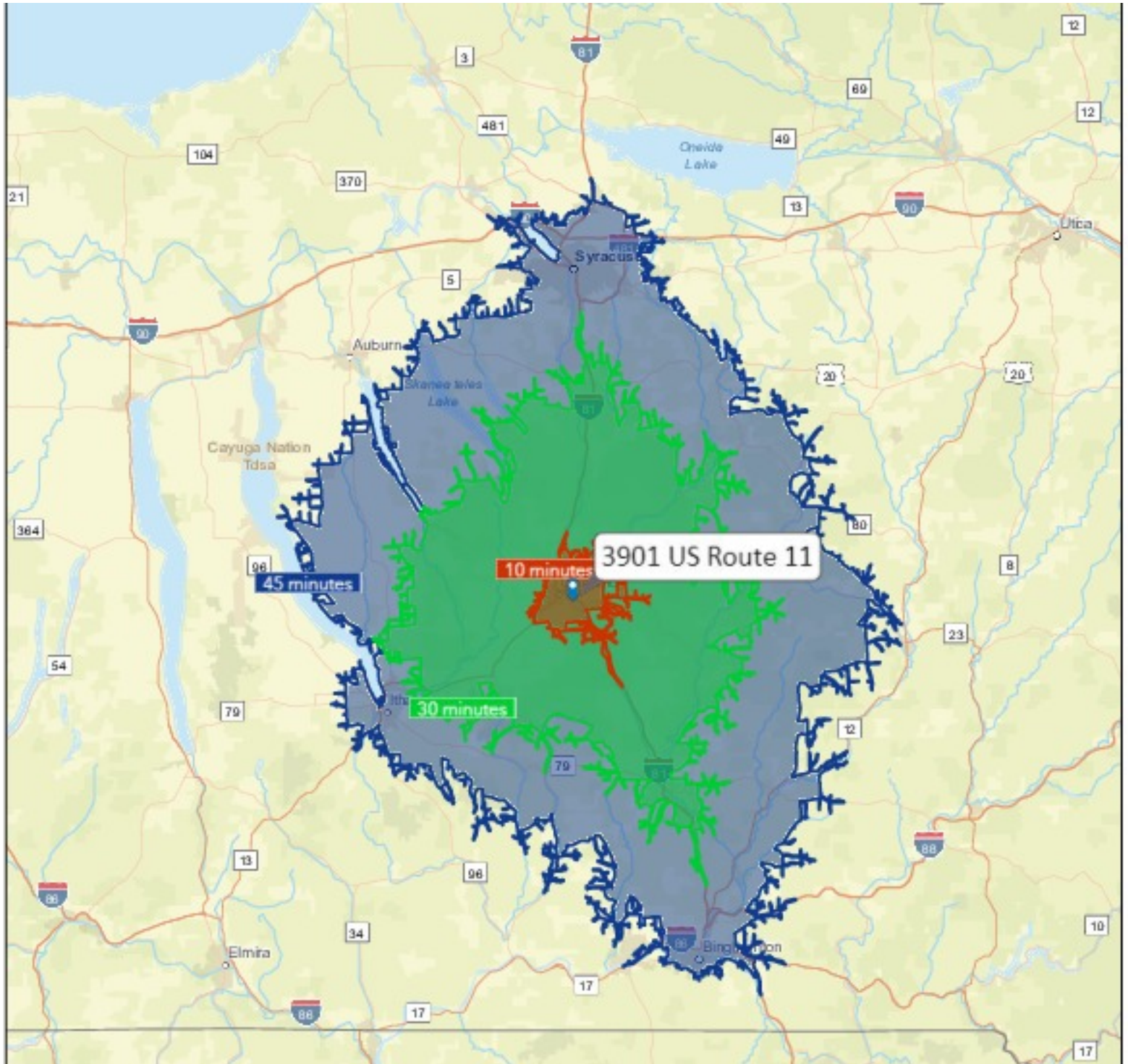
FOR SALE OR LEASE | 3901 US ROUTE 11
MECHANICALS



JOSHUA W. PODKAMINER, SIOR, CCIM
315.423.9390
jwp@jwpcommercial.com

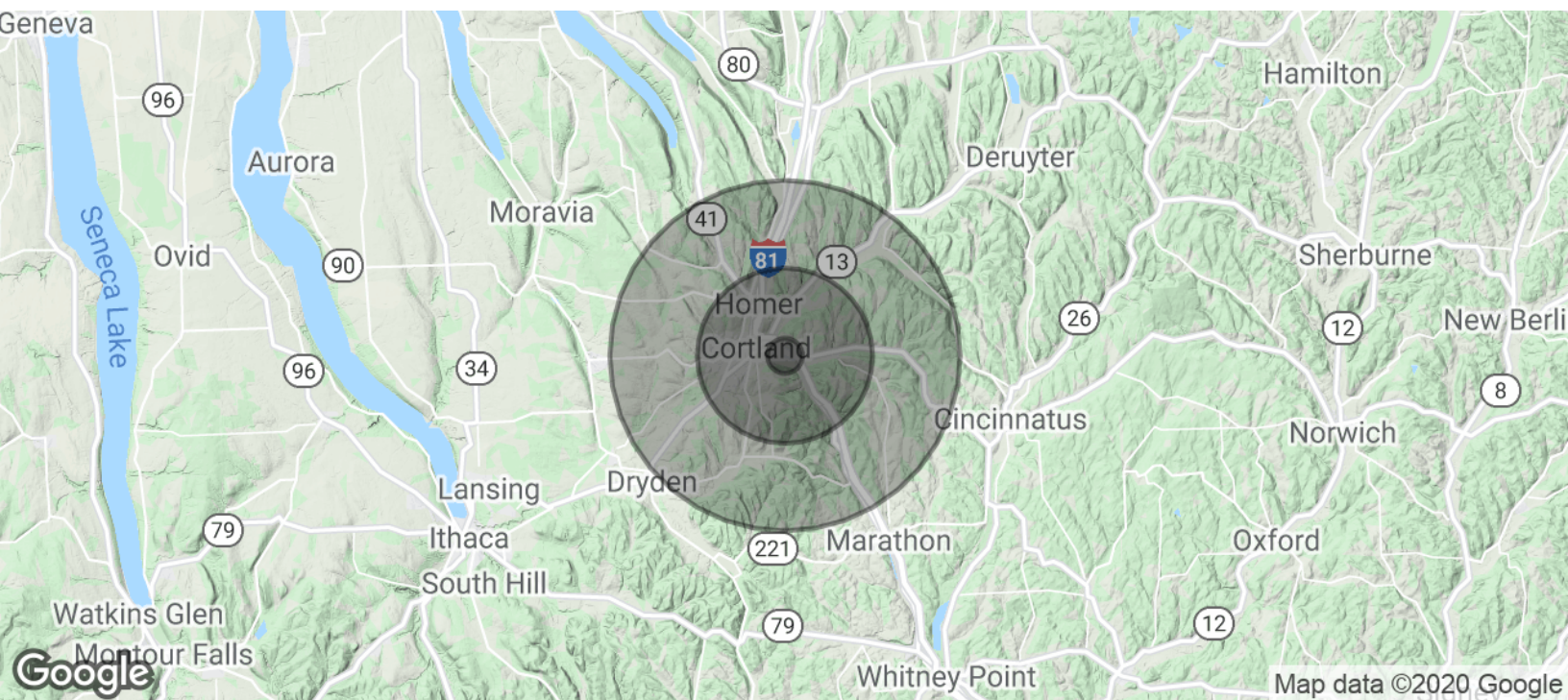
FOR SALE OR LEASE | 3901 US ROUTE 11

DRIVETIME MAP



JOSHUA W. PODKAMINER, SIOR, CCIM
315.423.9390
jwp@jwpcommercial.com

DEMOGRAPHICS MAP & REPORT



POPULATION	1 MILE	5 MILES	10 MILES
Total Population	1,578	37,751	54,118
Average age	33.8	35.7	37.2
Average age (Male)	36.3	35.4	36.6
Average age (Female)	30.6	36.3	38.0
HOUSEHOLDS & INCOME	1 MILE	5 MILES	10 MILES
Total households	605	13,976	20,183
# of persons per HH	2.6	2.7	2.7
Average HH income	\$48,701	\$54,143	\$57,147
Average house value	\$121,726	\$131,573	\$136,686

* Demographic data derived from 2010 US Census

ADVISOR BIO 1



JOSHUA W. PODKAMINER, SIOR, CCIM

Managing Member

jwp@jwpcommercial.com

Direct: 315.423.9390 | Cell: 315.415.6030

PROFESSIONAL BACKGROUND

Joshua W. Podkaminer, SIOR, CCIM is a native of Syracuse, New York. Josh and his wife, Rebecca, have four children and live in the nearby Jamesville - Dewitt area. Josh is active with his family and the community. Hobbies include travel, fly fishing, gardening (vegetable and pumpkin patch,) and a focus of being involved in his children's activities. Josh grew up around the commercial construction business and started working as a laborer on construction sites at the age of 14, which plays a significant role in his interest, and many friendships, with people in the construction trades. After graduating from Hobart College in 2000, Josh joined Montgomery Partners / Emhoff Associates as a real estate salesperson and quickly worked towards his real estate brokerage license. He purchased his first residential rental property in 2000, which expanded into a student housing business, and associated management, with properties immediately adjacent to Syracuse University. Real estate ownership and development has continued with projects including the Franklin Center Office Building, in the heart of Franklin Square, and OneGroup Center at 706 North Clinton Street in the Inner Harbor. The brokerage and management businesses were consolidated, and renamed, in 2015 into JWP Commercial, which today provides real estate brokerage, management, development, and consulting services with a focus throughout the Syracuse, NY and Onondaga County marketplace.

EDUCATION

Fayetteville-Manlius Schools, Manlius, New York

Lawrenceville School, Lawrenceville, New Jersey

Hobart and William Smith Colleges, Geneva, New York

MEMBERSHIPS

SIOR (Society of Industrial and Office Realtors)

CCIM (Certified Commercial Investment Member)

JWP Commercial
126 North Salina Street
Syracuse, NY 13202
315.415.6030

JOSHUA W. PODKAMINER, SIOR, CCIM

315.423.9390

jwp@jwpcommercial.com