

221 E 59th Street

Midtown East
New York ○ New York

Ground Floor
○ 2,172 SF

Lower Level
○ 1,951 SF



135 Fifth Avenue | 9th Floor
New York, NY 10010
212.687.2400
www.atlanticretailnyc.com



Retail Space For Lease

Turnkey showroom space across from the D&D Building



Contact Exclusive Agents

Evan Clements
eclements@atlanticretail.com
212.687.2431

Colleen Morrissey
cmorrissey@atlanticretail.com
212.687.2400

Marisa Simkin
msimkin@atlanticretail.com
917.780.4232

© 2025 Atlantic Retail Partners. All information supplied is from sources deemed reliable and is furnished subject to errors, omissions, modifications, removal of the listing from sale or lease, and to any listing conditions, including the rates and manner of payment of commissions for particular offerings imposed by Atlantic Retail Partners or principals, the terms of which are available to principals or duly licensed brokers. This information may include estimates and projections prepared by Atlantic Retail Partners with respect to future events, and these future events may or may not actually occur. Such estimates and projections reflect various assumptions concerning anticipated results. While Atlantic Retail Partners believes these assumptions are reasonable, there can be no assurance that any of these estimates and projections will prove to have been correct. Therefore, actual results may vary materially from these forward-thinking estimates and projections. Any square footage dimensions set forth are approximate.

Ground Floor

2,172 SF

Possession

February 2027

Comments

- Currently Janus et Cie
- Turnkey space on furniture row
- Located across from the D&D Building

Lower Level

1,951 SF

Neighboring Tenants

blømingdales

saatva

VISUAL COMFORT & Co.

CB2

THE SHAD_{DE} STORE

LOVESAC

AVOCADO

BEN SOLEIMANI

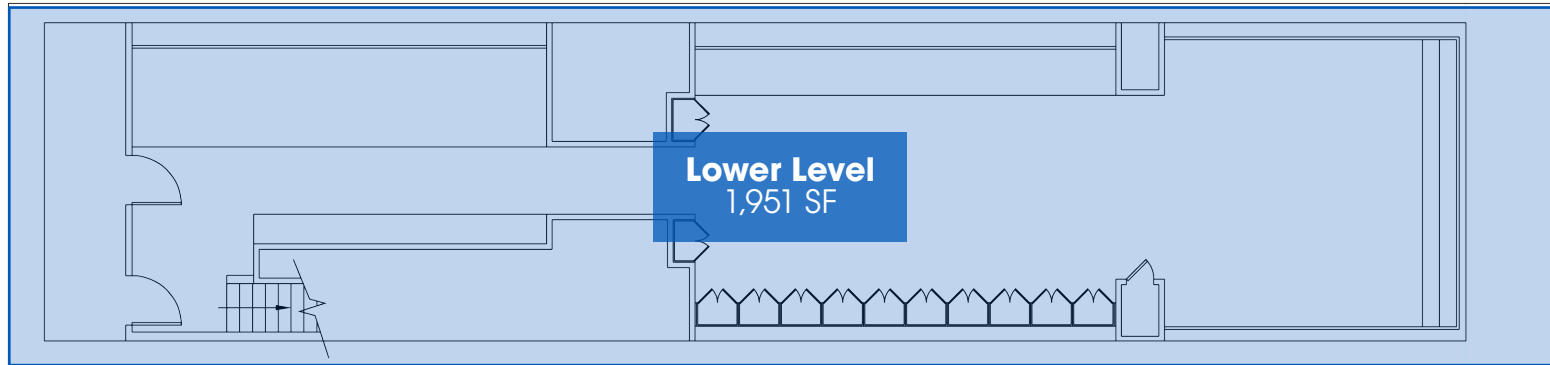
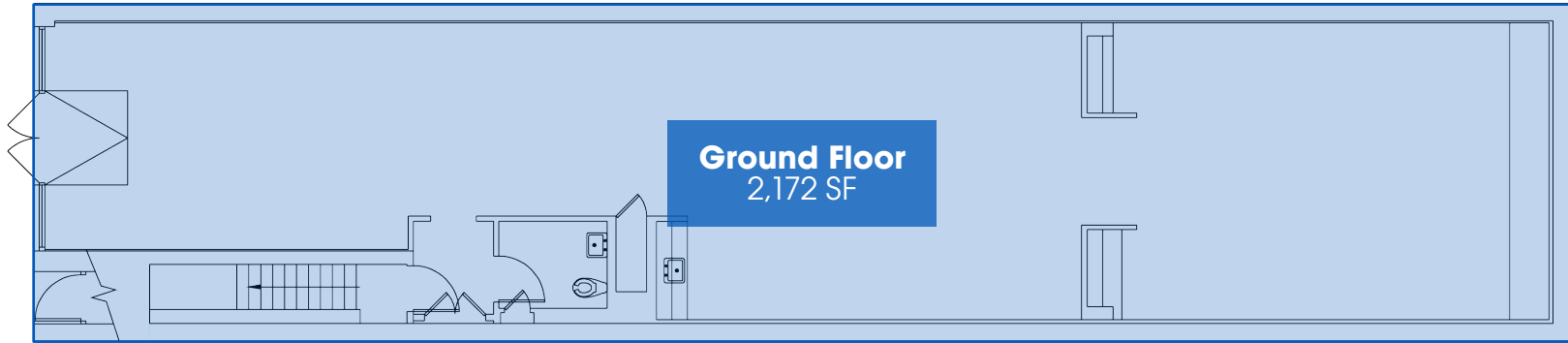
Transportation

1 Block from Lexington Ave & 59th Street
Subway Station

Average Annual Ridership - 11,961,525



E 59TH STREET

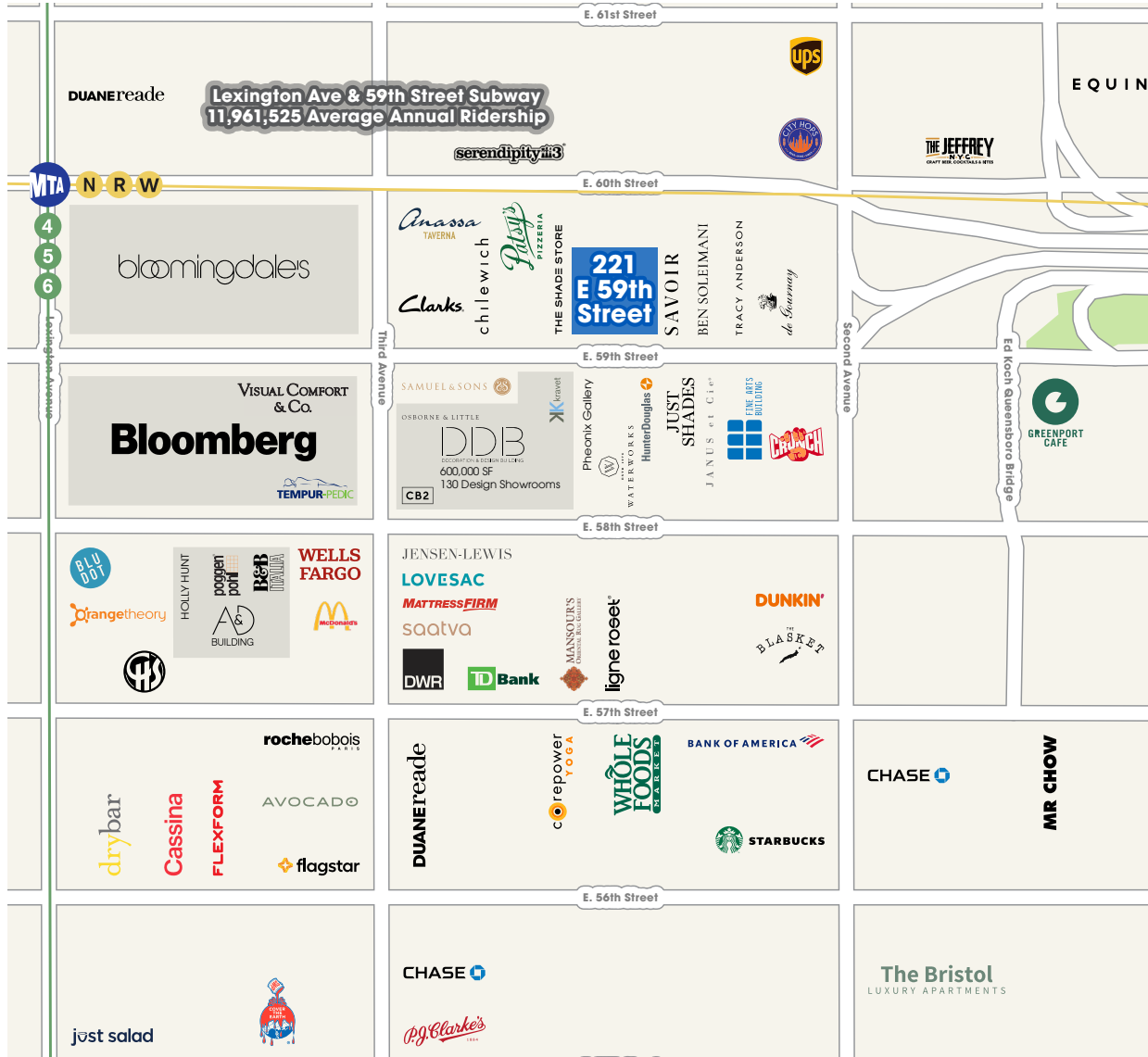




Lower Level



© 2025 Atlantic Retail Partners. All information supplied is from sources deemed reliable and is furnished subject to errors, omissions, modifications, removal of the listing from sale or lease, and to any listing conditions, including the rates and manner of payment of commissions for particular offerings imposed by Atlantic Retail Partners or principals, the terms of which are available to principals or duly licensed brokers. This information may include estimates and projections prepared by Atlantic Retail Partners with respect to future events, and these future events may or may not actually occur. Such estimates and projections reflect various assumptions concerning anticipated results. While Atlantic Retail Partners believes these assumptions are reasonable, there can be no assurance that any of these estimates and projections will prove to have been correct. Therefore, actual results may vary materially from these forward-thinking estimates and projections. Any square footage dimensions set forth are approximate.



221 E 59th Street

Midtown East

New York  New York



Contact Exclusive Agents

Evan Clements

eclements@atlanticretail.com

212.687.2431

Colleen Morrissey

cmorrissey@atlanticretail.com

212.687.2400

Marisa Simkin

msimkin@atlanticretail.com

917.780.4232



135 Fifth Avenue | 9th Floor

New York, NY 10010

212.687.2400

www.atlanticretailnyc.com



© 2025 Atlantic Retail Partners. All information supplied is from sources deemed reliable and is furnished subject to errors, omissions, modifications, removal of the listing from sale or lease, and to any listing conditions, including the rates and manner of payment of commissions for particular offerings imposed by Atlantic Retail Partners or principals, the terms of which are available to principals or duly licensed brokers. This information may include estimates and projections prepared by Atlantic Retail Partners with respect to future events, and these future events may or may not actually occur. Such estimates and projections reflect various assumptions concerning anticipated results. While Atlantic Retail Partners believes these assumptions are reasonable, there can be no assurance that any of these estimates and projections will prove to have been correct. Therefore, actual results may vary materially from these forward-thinking estimates and projections. Any square footage dimensions set forth are approximate.