

# Justison Landing Retail



FOR LEASE | PREMIER RIVERFRONT RETAIL OPPORTUNITY

South Justison Street  
Wilmington, DE 19801

Dann Gladnick  
DSM Commercial  
(302) 283-1800  
dgladnick@dsmre.com

Dan Wham  
DSM Commercial  
(302) 283-1800  
dwham@dsmre.com

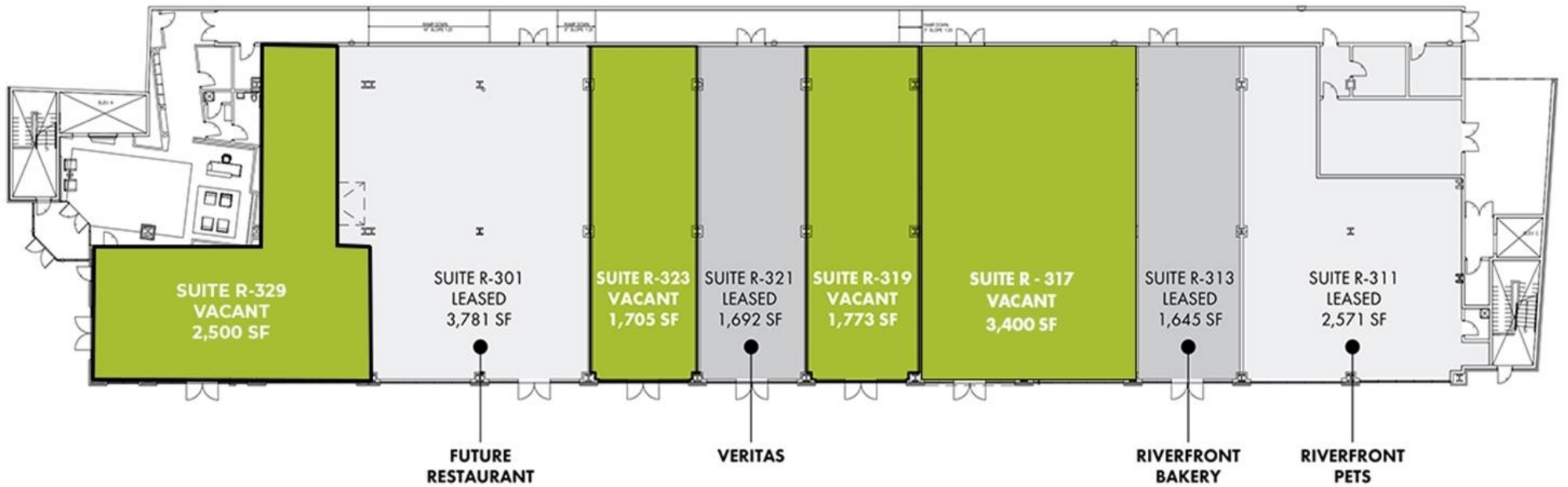
**DSM**  
COMMERCIAL

# HIGHLIGHTS

- Premier Riverfront retail opportunity located in the heart of Wilmington's thriving Riverfront district, surrounded by luxury residential, dining, and entertainment destinations. Ideal for restaurant, retail, or service users seeking visibility within a high-traffic lifestyle environment.
- Justison Landing Retail is positioned within Wilmington's vibrant Riverfront district, offering direct access to a built-in customer base driven by surrounding residential density, employment centers, and year-round entertainment. The property benefits from strong foot traffic generated by nearby dining, retail, and Penn Cinema IMAX, a regional destination attracting over 700,000 visitors annually.
- With immediate access to I-95, I-495, and downtown Wilmington, this location provides exceptional connectivity and visibility for retailers and restaurant users seeking a presence in one of the region's most active mixed-use environments.
- Prime Wilmington Riverfront location with strong pedestrian activity
- Surrounded by 1,200+ residential units and major employers
- Anchored by Veritas, Riverfront Bakery, & Riverfront Pets
- Adjacent to Penn Cinema IMAX (700,000+ annual visitors)
- Walkable, amenity-rich lifestyle environment
- Easy access to I-95, I-495, Route 13 & Amtrak Station
- Flexible configurations for retail, restaurant, or service users



Suite	Space	Floor	Size	Lease Type	Notes
R-317	Available	1	3,400 SF	NNN	2nd Generation Salon
R-319	Available	1	1,773 SF	NNN	Shell Condition
R-323	Available	1	1,705 SF	NNN	2nd Generation Restaurant
R-329	Available	1	2,500 SF	NNN	Former Starbucks



**GROUND FLOOR PLAN**



**AVAILABLE SPACE**  
3,400 SF Inline Retail

**AVAILABLE SPACE**  
1,773 SF Inline Retail

**AVAILABLE SPACE**  
1,705 SF Inline Retail

**AVAILABLE SPACE**  
2,500 SF Endcap Space

**CONSTITUTION YARDS  
BEER GARDEN**

300 BLOCK

400 BLOCK

S MADISON ST

HARLAN BLVD



FUTURE RESTAURANT

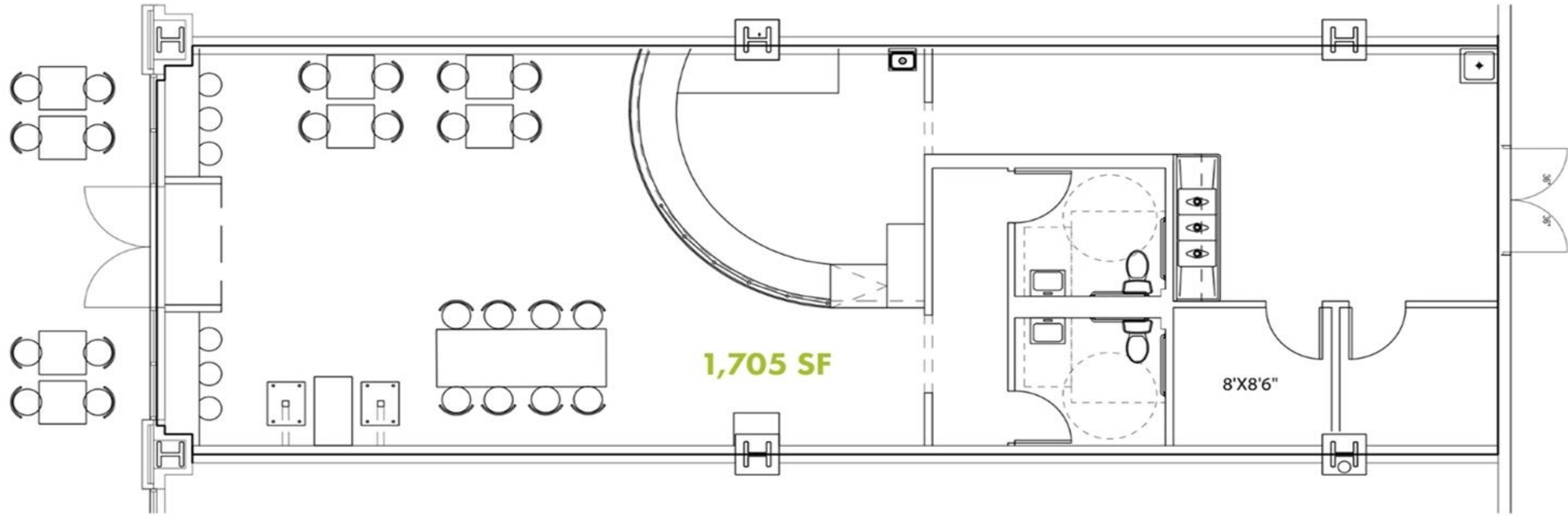
Justison St



Suite R-317: 3,400 SF



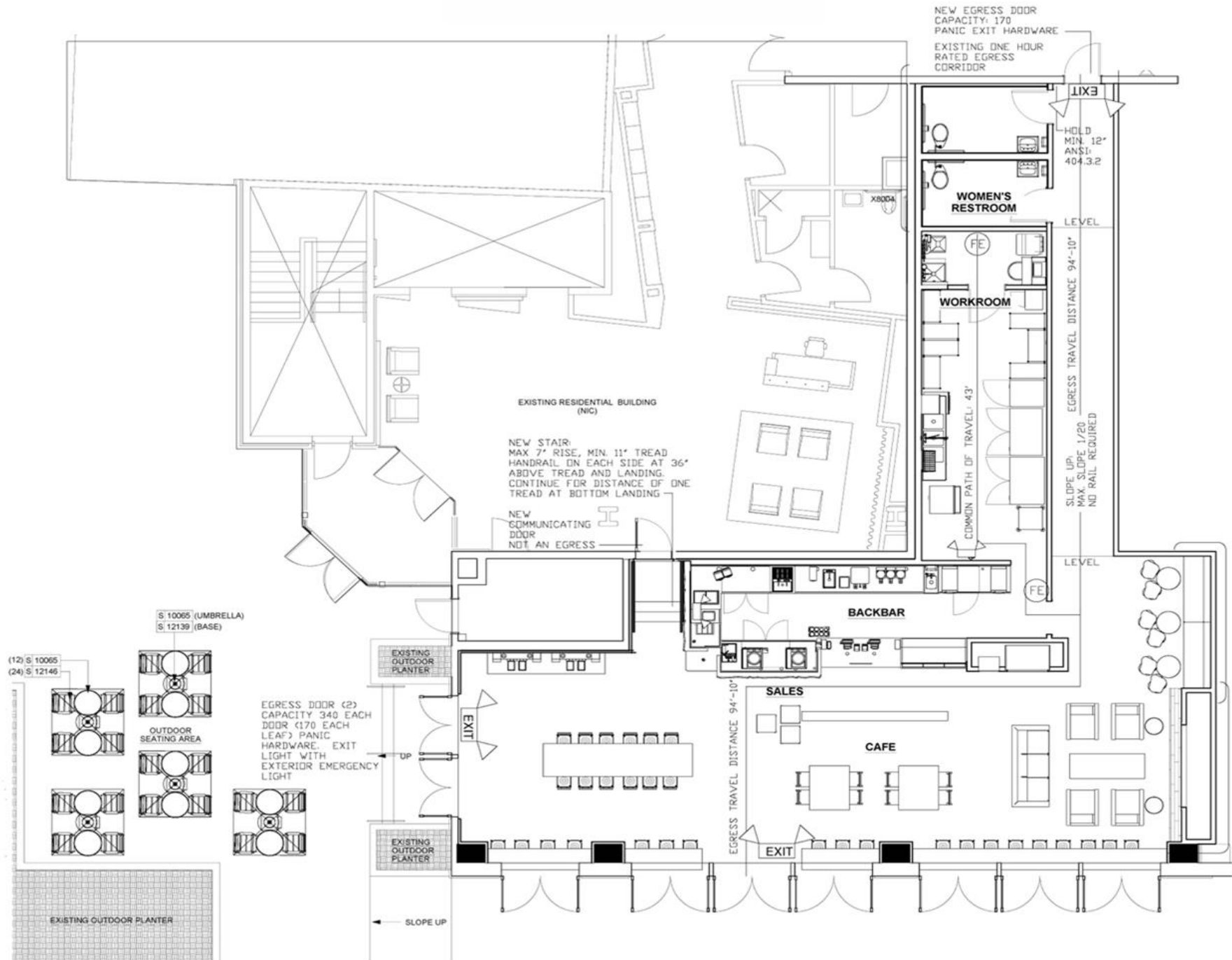
Suite R-319: 1,773 SF



Suite R-323: 1,705 SF



Former Starbucks



## Suite R-329: 2,500 SF



#### RETAIL

1. Bank's Seafood Kitchen & Raw Bar /Riverfront Market
2. Constitution Yards Beer Garden, Horizon Services Riverfront Rink
3. Riverfront Pets
4. The Riverfront Bakery
5. Currie Hair, Skin & Nails
6. Veritas Wine & Spirits
7. Starbucks on the Riverfront
8. Del Pez Mexican Gastropub, Goju Training Center
9. Christina Crossing Shopping Center & ShopRite
10. Riverfront Restaurants
11. Shipyard Shops

#### ENTERTAINMENT AND SPORTS

12. Delaware Theatre Co.
13. Tubman-Garrett Riverfront Park
14. Opera Delaware Studios/City Theater Co.
15. Wilmington Youth Rowing Assn.
16. Wilmington Rowing Center
17. Docklands Riverfront
18. Hare Pavilion/Riverwalk

19. The Delaware Contemporary

20. Public Docks
21. Delaware Children's Museum, Riverwalk Mini Golf
22. Frawley Stadium, Delaware Sports Museum & Hall of Fame
23. Chase Center on the Riverfront
24. Dravo Plaza & Dock
25. Planet Fitness
26. Russell W. Peterson Urban Wildlife Refuge/ DuPont Env. Edu. Center
27. Penn Cinema Riverfront IMAX
28. CrossFit Riverfront
29. Altitude Trampoline Park
30. Chase Fieldhouse
31. Chase Fields
32. Kalmar Nyckel Shipyard/Fort Christina Park
33. Jack A Markell Bike Trail

#### RESIDENTIAL

34. The Residences at Christina Landing Apartments, RiverTower Condos, and Christina Landing Townhomes
35. The Residences at Justison Landing Apartments
36. The Residences at Harlan Flats Apartments

#### COMMERCIAL

37. The Star Building
38. Christina Crescent
39. Barclays
40. AAA
41. Delaware Humane Association

#### HOTEL

42. Hyatt Place Wilmington Riverfront
43. Homewood Suites by Hilton Wilmington Downtown
44. The Westin Wilmington, River Rock Kitchen

#### TRANSPORTATION

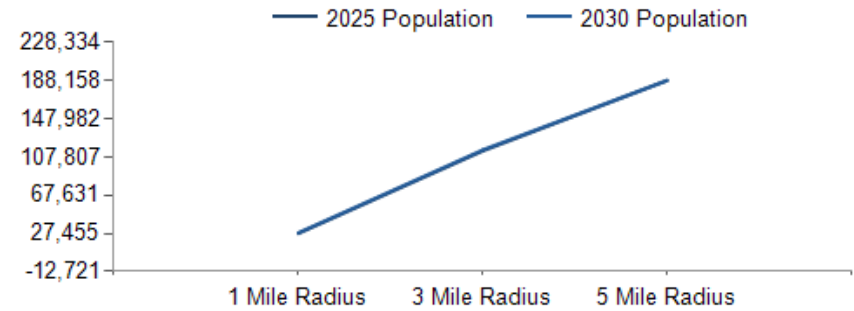
45. AMTRAK & SEPTA Train Station
46. Riverfront Commuter Lot
47. Christina River Bridge



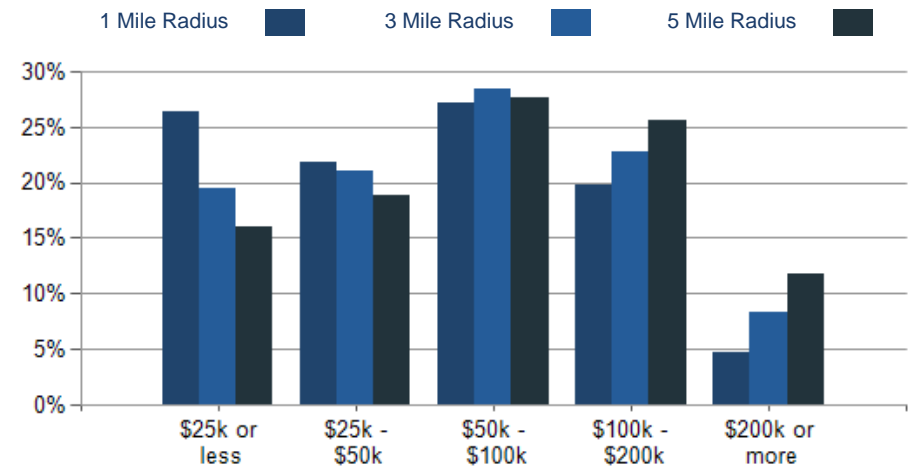
**JUSTISON LANDING RETAIL AVAILABLE**

POPULATION	1 MILE	3 MILE	5 MILE
2000 Population	25,626	112,634	185,743
2010 Population	25,888	111,407	183,805
2025 Population	27,455	114,121	188,073
2030 Population	27,995	115,083	188,158
2025 African American	14,945	52,269	65,896
2025 American Indian	169	583	1,006
2025 Asian	504	1,718	4,590
2025 Hispanic	6,917	21,299	33,003
2025 Other Race	3,572	10,225	15,758
2025 White	5,462	38,991	83,736
2025 Multiracial	2,786	10,281	17,014

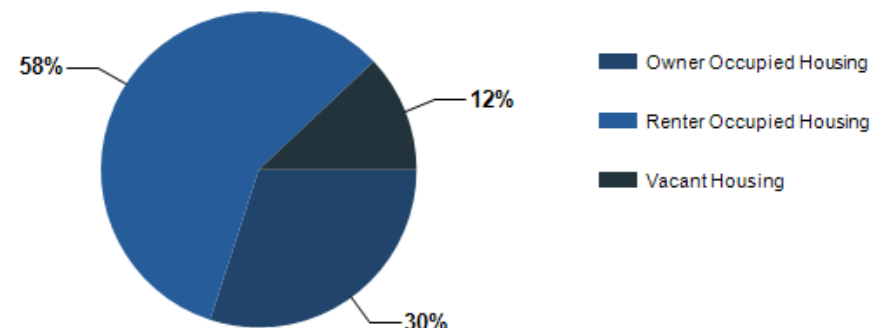
2025 HOUSEHOLD INCOME	1 MILE	3 MILE	5 MILE
less than \$15,000	1,960	5,867	7,861
\$15,000-\$24,999	1,133	3,559	4,803
\$25,000-\$34,999	892	3,967	5,522
\$35,000-\$49,999	1,657	6,225	9,395
\$50,000-\$74,999	1,963	8,067	12,631
\$75,000-\$99,999	1,227	5,698	9,256
\$100,000-\$149,999	1,564	7,060	12,634
\$150,000-\$199,999	762	3,935	7,642
\$200,000 or greater	544	4,012	9,277
Median HH Income	\$52,050	\$62,433	\$73,175
Average HH Income	\$75,191	\$93,362	\$108,083



### 2025 Household Income



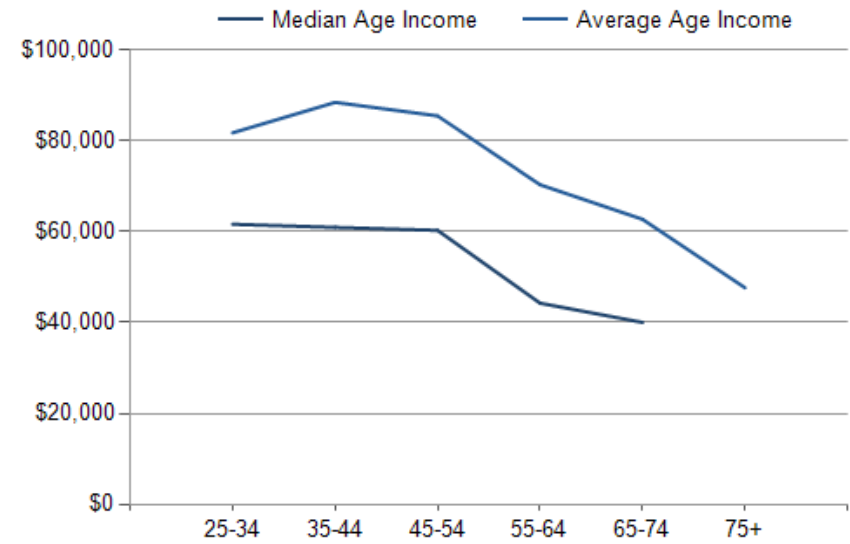
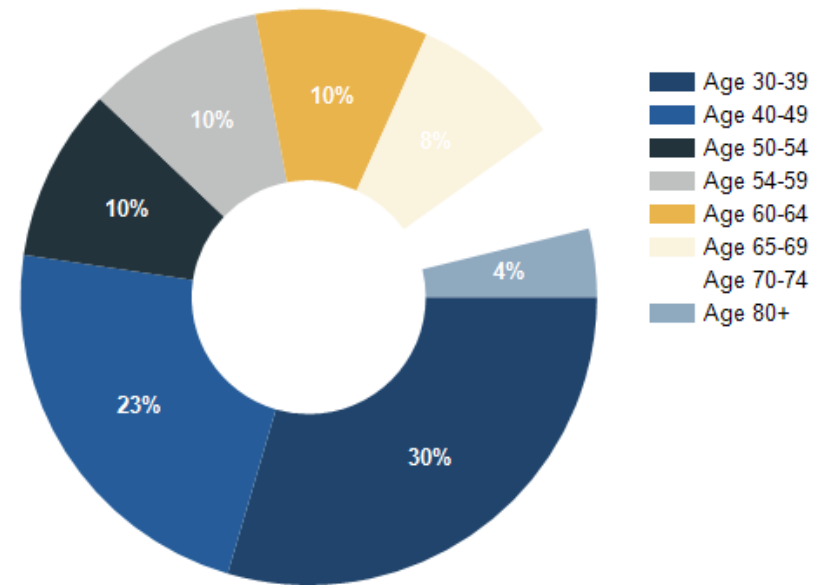
### 2025 Own vs. Rent - 1 Mile Radius



2025 POPULATION BY AGE	1 MILE	3 MILE	5 MILE
2025 Population Age 30-34	2,336	8,986	13,820
2025 Population Age 35-39	2,124	8,261	13,228
2025 Population Age 40-44	1,851	7,666	12,427
2025 Population Age 45-49	1,593	6,586	10,912
2025 Population Age 50-54	1,472	6,524	11,011
2025 Population Age 55-59	1,500	6,623	11,356
2025 Population Age 60-64	1,460	6,983	12,167
2025 Population Age 65-69	1,272	6,484	11,318
2025 Population Age 70-74	911	4,930	9,091
2025 Population Age 75-79	579	3,614	6,642
2025 Population Age 80-84	290	2,171	4,265
2025 Population Age 85+	244	1,892	3,947
2025 Population Age 18+	20,550	89,617	148,956
2025 Median Age	34	38	40
2030 Median Age	35	39	41

2025 INCOME BY AGE	1 MILE	3 MILE	5 MILE
Median Household Income 25-34	\$61,647	\$70,623	\$78,748
Average Household Income 25-34	\$81,794	\$94,587	\$104,521
Median Household Income 35-44	\$60,969	\$76,033	\$89,073
Average Household Income 35-44	\$88,496	\$107,499	\$123,359
Median Household Income 45-54	\$60,318	\$78,327	\$93,285
Average Household Income 45-54	\$85,520	\$109,541	\$128,503
Median Household Income 55-64	\$44,270	\$63,806	\$79,347
Average Household Income 55-64	\$70,361	\$100,165	\$118,392
Median Household Income 65-74	\$40,034	\$48,917	\$58,996
Average Household Income 65-74	\$62,747	\$81,927	\$96,696
Average Household Income 75+	\$47,658	\$65,203	\$78,143

Population By Age



# Justison Landing Retail

## CONFIDENTIALITY and DISCLAIMER

The information contained in the following offering memorandum is proprietary and strictly confidential. It is intended to be reviewed only by the party receiving it from DSM Commercial and it should not be made available to any other person or entity without the written consent of DSM Commercial.

By taking possession of and reviewing the information contained herein the recipient agrees to hold and treat all such information in the strictest confidence. The recipient further agrees that recipient will not photocopy or duplicate any part of the offering memorandum. If you have no interest in the subject property, please promptly return this offering memorandum to DSM Commercial. This offering memorandum has been prepared to provide summary, unverified financial and physical information to prospective tenants, and to establish only a preliminary level of interest in the subject property.

The information contained herein is not a substitute for a thorough due diligence investigation. DSM Commercial has not made any investigation, and makes no warranty or representation with respect to the income or expenses for the subject property, the future projected financial performance of the property, the size and square footage of the property and improvements, the presence or absence of contaminating substances, PCBs or asbestos, the compliance with local, state and federal regulations, the physical condition of the improvements thereon, or financial condition or business prospects of any tenant, or any tenant's plans or intentions to continue its occupancy of the subject property.

The information contained in this offering memorandum has been obtained from sources we believe reliable; however, DSM Commercial has not verified, and will not verify, any of the information contained herein, nor has DSM Commercial conducted any investigation regarding these matters and makes no warranty or representation whatsoever regarding the accuracy or completeness of the information provided. All potential buyers must take appropriate measures to verify all of the information set forth herein. Prospective buyers shall be responsible for their costs and expenses of investigating the subject property.

*Exclusively Marketed by:*

**Dann Gladnick**  
DSM Commercial  
(302) 283-1800  
dgladnick@dsmre.com

**Dan Wham**  
DSM Commercial  
(302) 283-1800  
dwham@dsmre.com

**DSM**  
**COMMERCIAL**

Brokerage License No.: 2012602342  
www.dsmre.com

powered by CREOP