

Workplace Co.

**40 QUEEN STREET**

CITY, LONDON, EC4R 1DD

---

THEWORKPLACECOMPANY.CO.UK | 020 7993 8075



# 40 QUEEN STREET

This corner office benefits from plenty of natural light, fitted with workstations, meeting rooms and built in phone booths. The fitout includes a kitchenette and breakout space. Within the building tenants have use of end of trip facilities such as bike racks, showers and the manned reception.

In addition to this, the property benefits from a newly constructed communal roof terrace.





**New lease** for a term to be agreed with the Landlord.

Floor	SQFT	Rent	Rates	Service	£ Monthly	£ Annually
Ground	1,384	£57.50	£25.84	£17.81	£11,666	£139,992

## Key Features

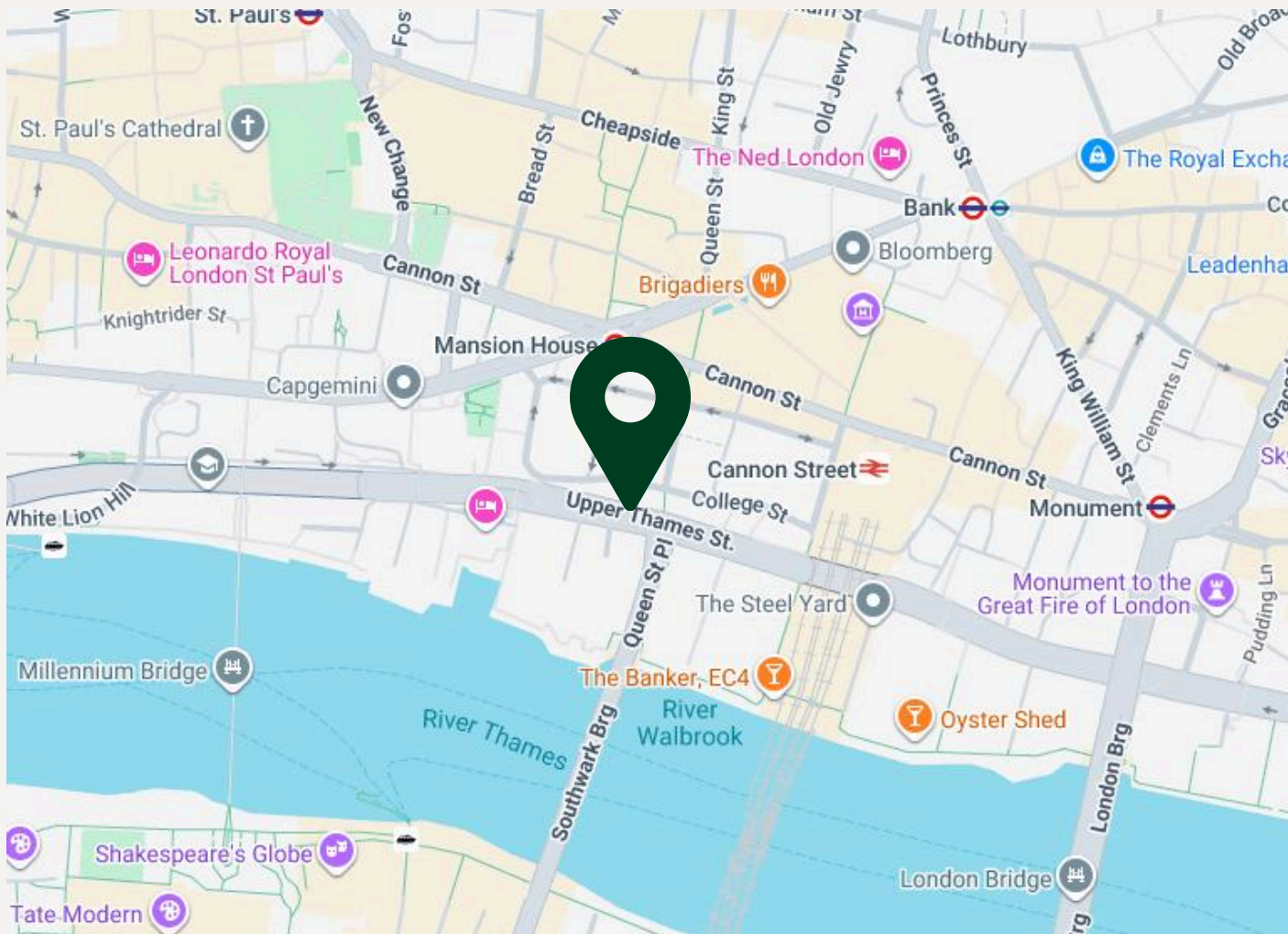
- Reception
- Cycle Racks
- Showers
- Open Plan
- Great Natural Light
- Fibre
- Communal Roof Terrace
- Fully Fitted
- Phone Booths
- 10 Person Meeting Room

## Nearby Stations

-  Mansion House (3 mins walk)
-  Cannon Street (3 mins walk)
-  Bank (5 mins walk)
-  Monument (7 mins walk)

# 40 QUEEN STREET

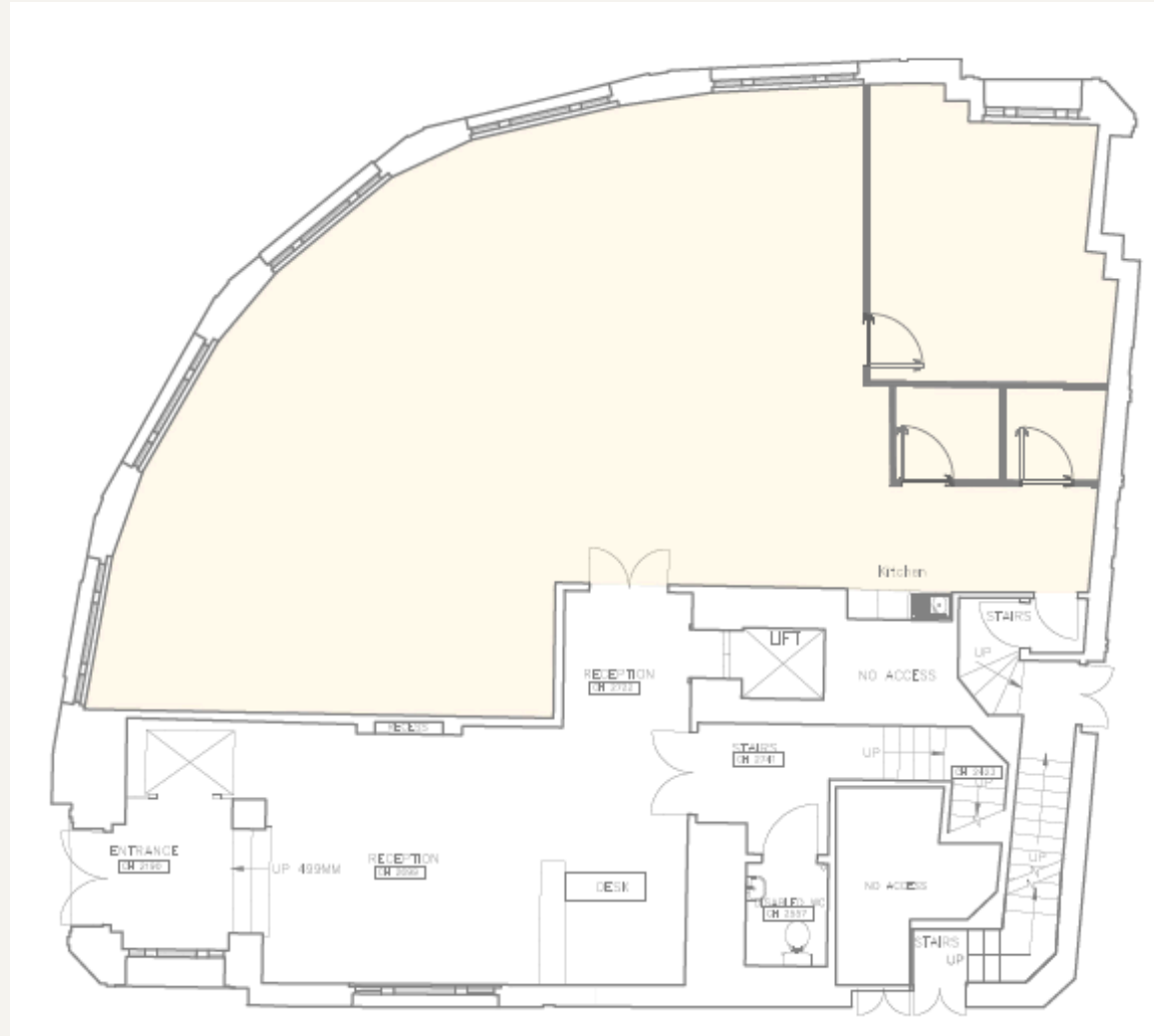
The property is located on the corner of Queen Street and Upper Thames Street, with Mansion House. The property is in close proximity to Bank, St Paul's and Cannon Street Station all within a few minutes walk. Surrounding the property are plenty of amenities and places to eat.



# GALLERY



# FLOOR PLAN



Workplace Co.

# VIEWINGS

**Harry James** - Associate Director

**DD:** 02079938075 / **M:** 07597415549

**E:** [hj@theworkplacecompany.co.uk](mailto:hj@theworkplacecompany.co.uk)

**Oliver Bowder MRICS** - Surveyor

**DD:** 02079938075 / **M:** 07712209524

**E:** [ob@theworkplacecompany.co.uk](mailto:ob@theworkplacecompany.co.uk)

---

THEWORKPLACECOMPANY.CO.UK | 020 7993 8075

Misrepresentation Act 1967: These particulars are believed to be correct but their accuracy is not guaranteed and they do not form part of any contract. Unless otherwise stated, all prices and rents are quoted exclusive of VAT