

**560 National Business
Parkway Jessup, MD**

Largest block of contiguous space in National Business Park

138,369 SF for Sublease

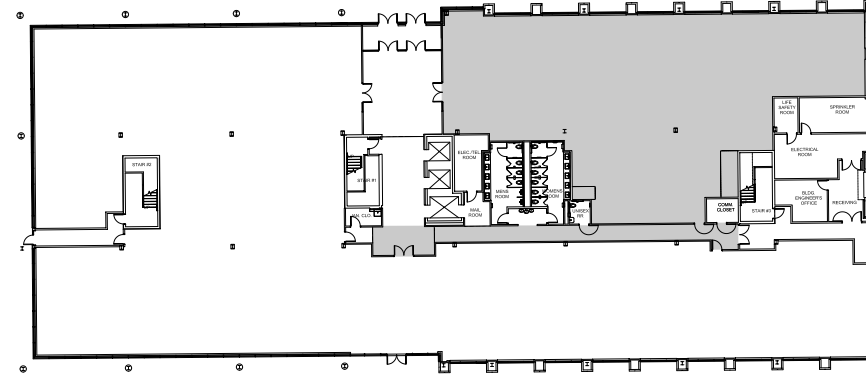


Jones Lang LaSalle Americas, Inc. License #: CO508577000

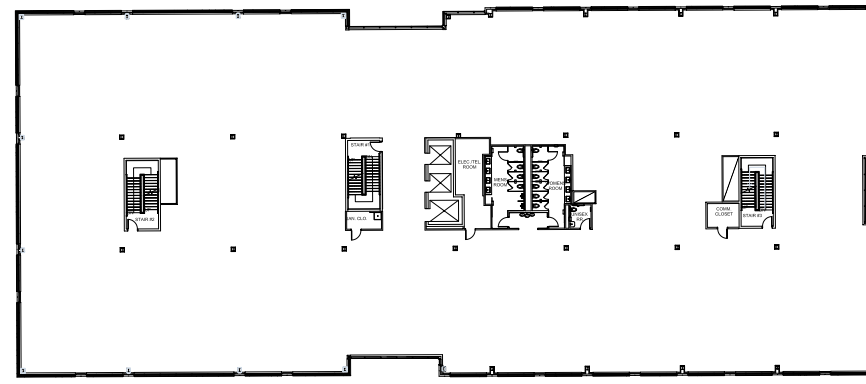
SUBLEASE HIGHLIGHTS

- 138,369 SF available in shell condition
- Floors 1 and 3-6
- Negotiable rental sublease rate
- Term through September 30, 2034
- Access to structured garage parking

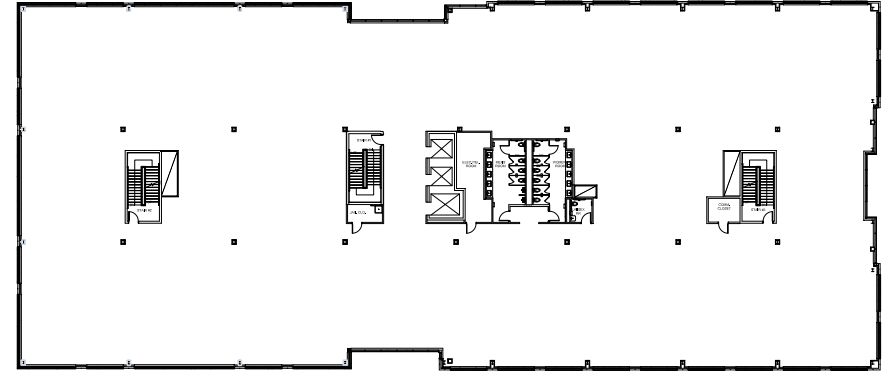
FLOOR 1
15,979 RSF AVAILABLE



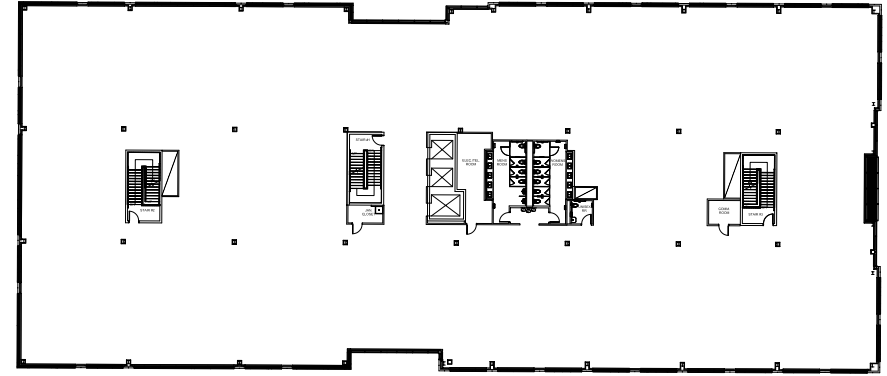
FLOOR 3
30,634 RSF AVAILABLE



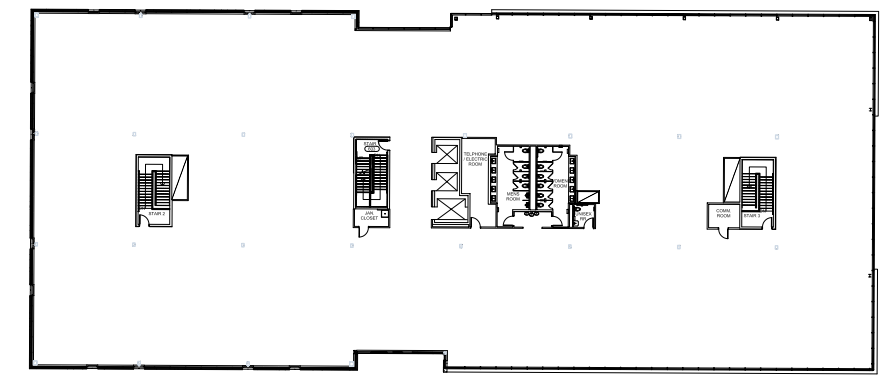
FLOOR 4
30,633 RSF AVAILABLE



FLOOR 5
30,630 RSF AVAILABLE



FLOOR 6
30,493 RSF AVAILABLE



CORPORATE NEIGHBORS

Join these government entities and contractors at National Business Park.



Booz | Allen | Hamilton



Hotels: Marriott Courtyard, TownePlace Suites by Marriott



Restaurants: Fiero Mexican Grill, Subway Subway Café, Joe's Café



Center for Creative Children day care



Kicked-up Fitness



Tower Federal Credit Union



Farmers Market

Bill Craig

Bill.Craig@jll.com
703-485-8736

Brad Crosley

Brad.Crosley@jll.com
443-451-2606



Jones Lang LaSalle Americas, Inc. License #: CO508577000

Although information has been obtained from sources deemed reliable, neither Owner nor JLL makes any guarantees, warranties or representations, express or implied, as to the completeness or accuracy as to the information contained herein. Any projections, opinions, assumptions or estimates used are for example only. There may be differences between projected and actual results, and those differences may be material. The Property may be withdrawn without notice. Neither Owner nor JLL accepts any liability for any loss or damage suffered by any party resulting from reliance on this information. If the recipient of this information has signed a confidentiality agreement regarding this matter, this information is subject to the terms of that agreement. © 2024 Jones Lang LaSalle IP, Inc. All rights reserved.