



For lease

Westbrook Center | Building 2

11401 S Belcher Road
Largo, FL 33773

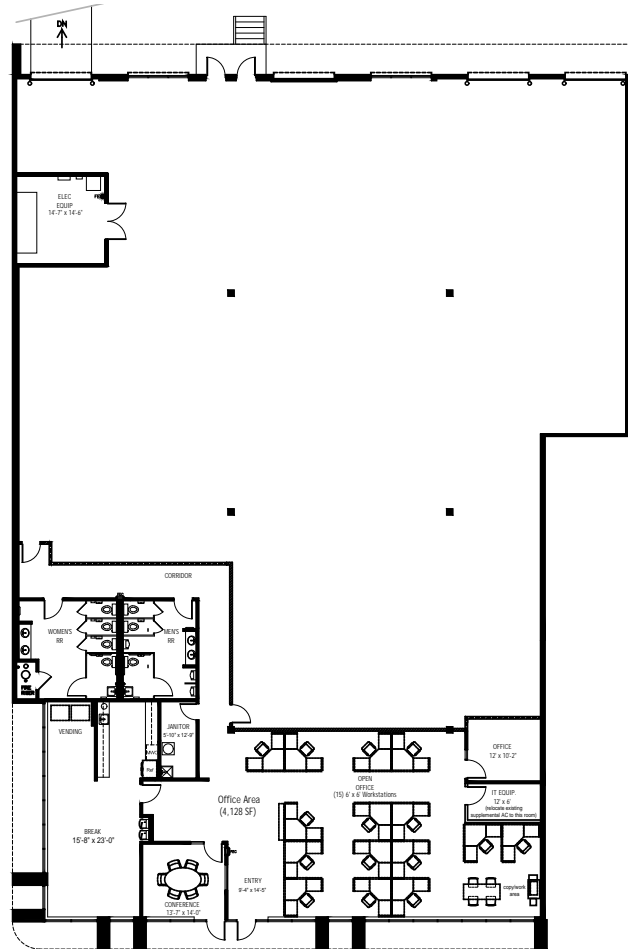


Westbrook



Suite 290

Size	13,400 SF
Office SF	4,128 SF
Available	Now
Clear Height	18'
HVAC	100%
Sprinklers	Wet
Loading	4 dock-high doors 1 ramp
Power	277/480-volt, 3 phase, 600 amps, 4 wire main service
Column Spacing	36'x36'
Building Depth	155'
Truck Court	160' shared
Parking	2.70/1,000 SF



Building 2 | 11401 S Belcher Road, Largo, FL

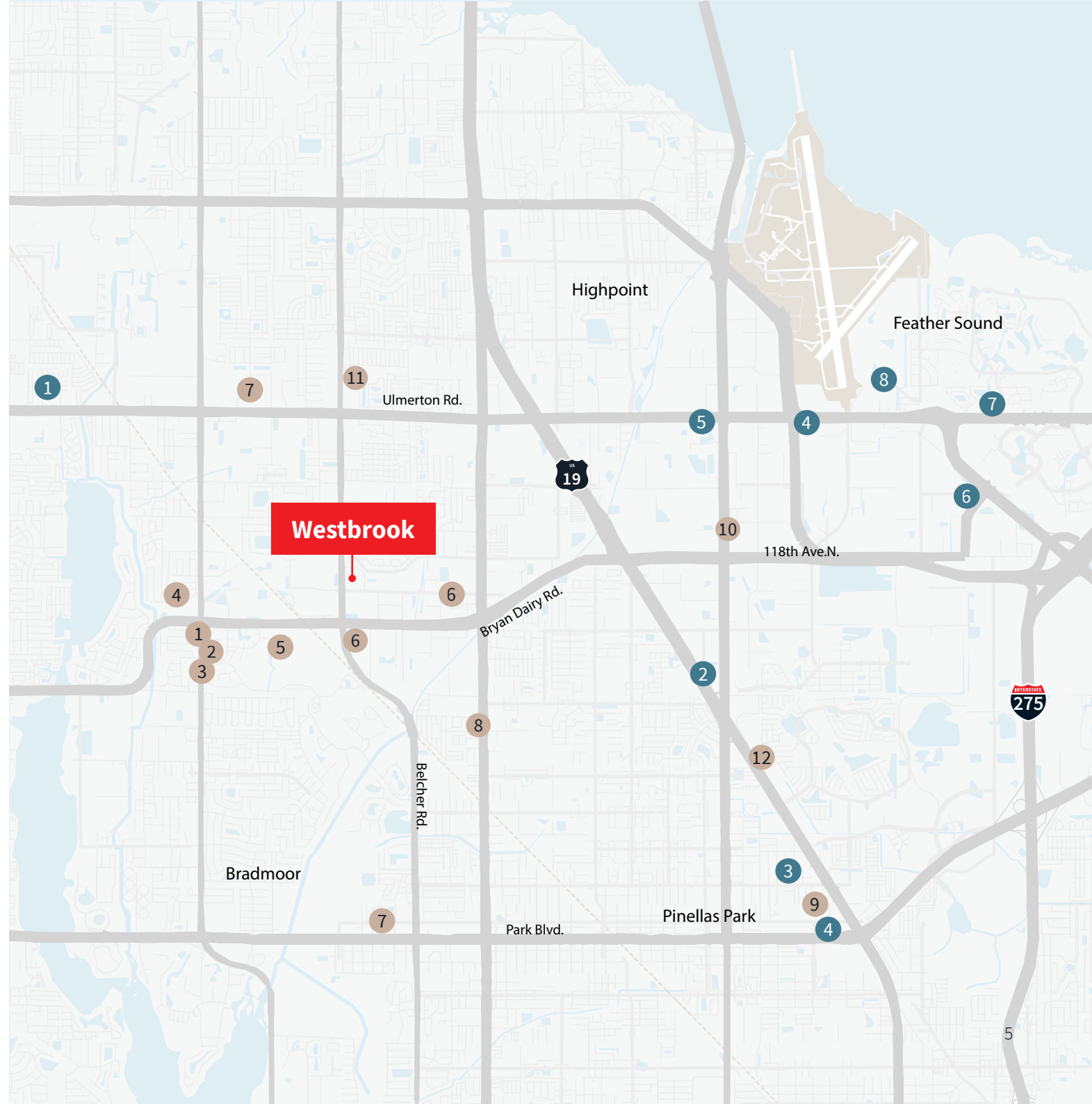
Amenities

Food

1. Panera Bread
2. Starbucks
3. Little Greek
4. Moe's
5. Dunkin'
6. Subway
7. Zaxby's
8. Pinellas Grill
9. Tijuana Flats
10. Engine 53 Pizza
11. Finley's Irish Eatery
12. Nuevo Vallarta

Hotels

1. Hilton Home2 Suites
2. La Quinta
3. Country Inn & Suites
4. Hampton Inn
5. Residence Inn Marriott
6. Saint Pete Marriott
7. Homewood Suites
8. Courtyard Marriott





John Dunphy CCIM, SIOR
Executive Managing Director
johnc.dunphy@jll.com
+1 813 387 1312

Peter Cecora SIOR
Executive Managing Director
peter.cecora@jll.com
+1 813 387 1297

Olivia Brock
Vice President
olivia.brock@jll.com
+1 813 387 1320



Although information has been obtained from sources deemed reliable, JLL does not make any guarantees, warranties or representations, express or implied, as to the completeness or accuracy as to the information contained herein. Any projections, opinions, assumptions or estimates used are for example only. There may be differences between projected and actual results, and those differences may be material. JLL does not accept any liability for any loss or damage suffered by any party resulting from reliance on this information. If the recipient of this information has signed a confidentiality agreement with JLL regarding this matter, this information is subject to the terms of that agreement. ©2025 Jones Lang LaSalle Brokerage, Inc. All rights reserved.