

**FOR LEASE**



**±1,829 SF OFFICE AVAILABLE**

**300 TAMAL VISTA BLVD**

**CORTE MADERA, CA**

**STEVEN LEONARD**

Managing Director

+1 415 722 1080

[steven.leonard@cushwake.com](mailto:steven.leonard@cushwake.com)

Lic #: 00909604

**WHITNEY STROTZ**

Executive Managing Director

+1 415 451 2406

[whitney.strotz@cushwake.com](mailto:whitney.strotz@cushwake.com)

Lic #: 01351397

# 300 TAMAL VISTA BLVD

## CORTE MADERA, CA

### Property Overview

300 Tamal Vista Blvd is in a prime central Marin location, with easy access to and from U.S HWY 101 and is bordered by walking/biking trails to downtown Larkspur. The rent is \$4.25 PSF/month, full service plus electrical.



Operable windows



Suites are accessible through individual, exterior entries



Efficient floor plan



Abundant natural light on three sides



ADA lift



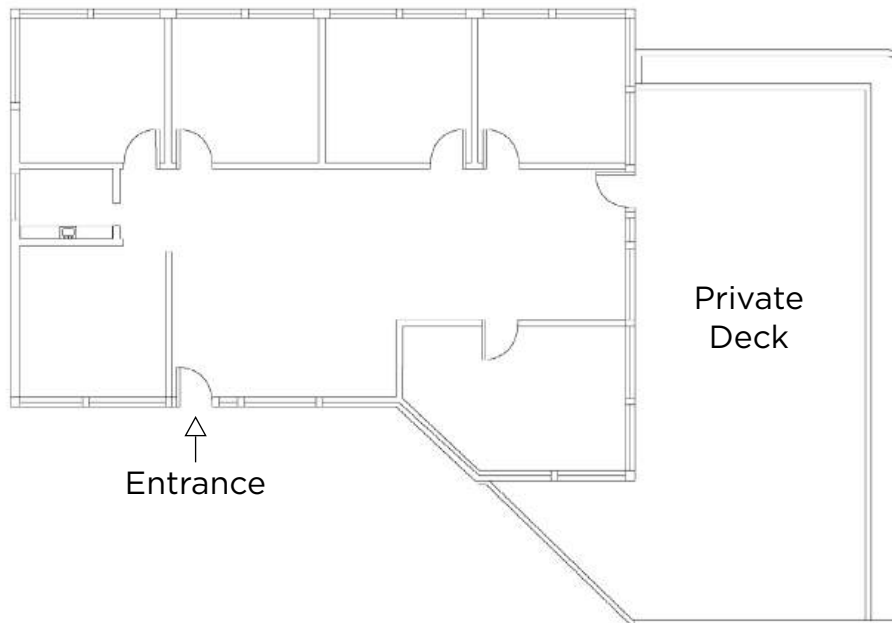
Walking distance to The Marketplace, Town Center, and many more amenities



# 300 TAMAL VISTA BLVD

## SUITE 250

- ± 1,829 SF
- \$4.25 PSF/month, full service plus electrical
- Reception area
- Operable windows in all offices
- 5 private offices, all with exterior views and glass-lines
- Kitchenette
- Private exterior deck not included in SF
- Second floor suite (new ADA lift in building)



# 300 TAMAL VISTA BLVD AERIAL MAP





**FOR MORE INFORMATION, CONTACT:**

**STEVEN LEONARD**

Managing Director  
+1 415 722 1080  
steven.leonard@cushwake.com  
Lic #: 00909604

**WHITNEY STROTZ**

Executive Managing Director  
+1 415 451 2406  
whitney.strotz@cushwake.com  
Lic #: 01351397

©2025 Cushman & Wakefield. All rights reserved. The information contained in this communication is strictly confidential. This information has been obtained from sources believed to be reliable but has not been verified. NO WARRANTY OR REPRESENTATION, EXPRESS OR IMPLIED, IS MADE AS TO THE CONDITION OF THE PROPERTY (OR PROPERTIES) REFERENCED HEREIN OR AS TO THE ACCURACY OR COMPLETENESS OF THE INFORMATION CONTAINED HEREIN, AND SAME IS SUBMITTED SUBJECT TO ERRORS, OMISSIONS, CHANGE OF PRICE, RENTAL OR OTHER CONDITIONS, WITHDRAWAL WITHOUT NOTICE, AND TO ANY SPECIAL LISTING CONDITIONS IMPOSED BY THE PROPERTY OWNER(S). ANY PROJECTIONS, OPINIONS OR ESTIMATES ARE SUBJECT TO UNCERTAINTY AND DO NOT SIGNIFY CURRENT OR FUTURE PROPERTY PERFORMANCE.

