

4500 EAST
WEST

4500 EAST WEST

A striking landmark in the heart of Bethesda, 4500 East West is a LEED-Platinum trophy office building designed for performance and convenience. Just steps from the Metro, it features flexible workspace, top-tier amenities, bike path access, and four levels of parking. Its energy-efficient curtain wall with Low-E glazing cuts glare and reduces costs, while a state-of-the-art HVAC system delivers twice the fresh air of typical buildings.



230K SF

Of trophy office space



1.2/1,000 SF

Parking ratio



LEED PLATINUM

Since 2014



3 MINUTES

From Red Line Metro

DISTINGUISHED HOSPITALITY

Professionally managed by Carr Properties, 4500 East West benefits from a hospitality-driven approach focused on exceptional service, curated amenities, and a seamless tenant experience.



[CLICK TO TOUR LOBBY](#)

AMENITIES THAT IMPRESS

From wellness to productivity, 4500 East West offers amenities that impress. A 2,800 square foot fitness center with locker rooms and showers is paired with a bike facility featuring lockers and a repair station—plus a modern conference center designed for seamless meetings and collaboration.

CLICK TO TOUR:

[FITNESS CENTER](#)

[CONFERENCE CENTER](#)



FITNESS CENTER



CONFERENCE CENTER



BIKE FACILITY



LOCKER ROOMS

HIGH PERFORMANCE WORKSPACES

Designed by award-winning architect Shalom Baranes, the building's floor-to-ceiling windows offer generous natural daylight and promote employee wellbeing and productivity.

The 28,700 square-foot floor plates are designed for flexible customer layouts and workplace efficiency.



SUITE 740

ELEVATED EXPERIENCE

A newly renovated 4,500 square foot rooftop terrace includes lush landscaping, covered and open seating, a catering kitchen, restrooms, and a panoramic view of Bethesda and Northwest Washington, DC.



CLICK AVAILABILITIES TO TOUR

● Availabilities ● Spec Suites

Suite 740
2,215 RSF

Suite 745
2,686 RSF

Suite 550
4,195 RSF

Suite 400
28,957 RSF

Suite 300
28,734 RSF

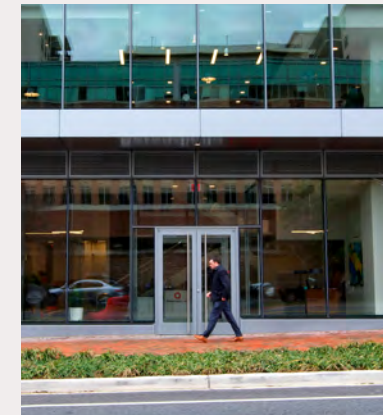
1

2

CURRENT AVAILABILITY

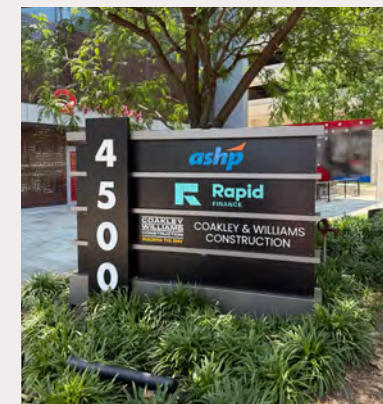
SIGNAGE OPPORTUNITIES AT 4500 EAST WEST

1 Tier



Exclusive tier signage available for anchor tenants at 4500 East West, delivering unmatched visibility from a prime downtown Bethesda location.

2 Monument



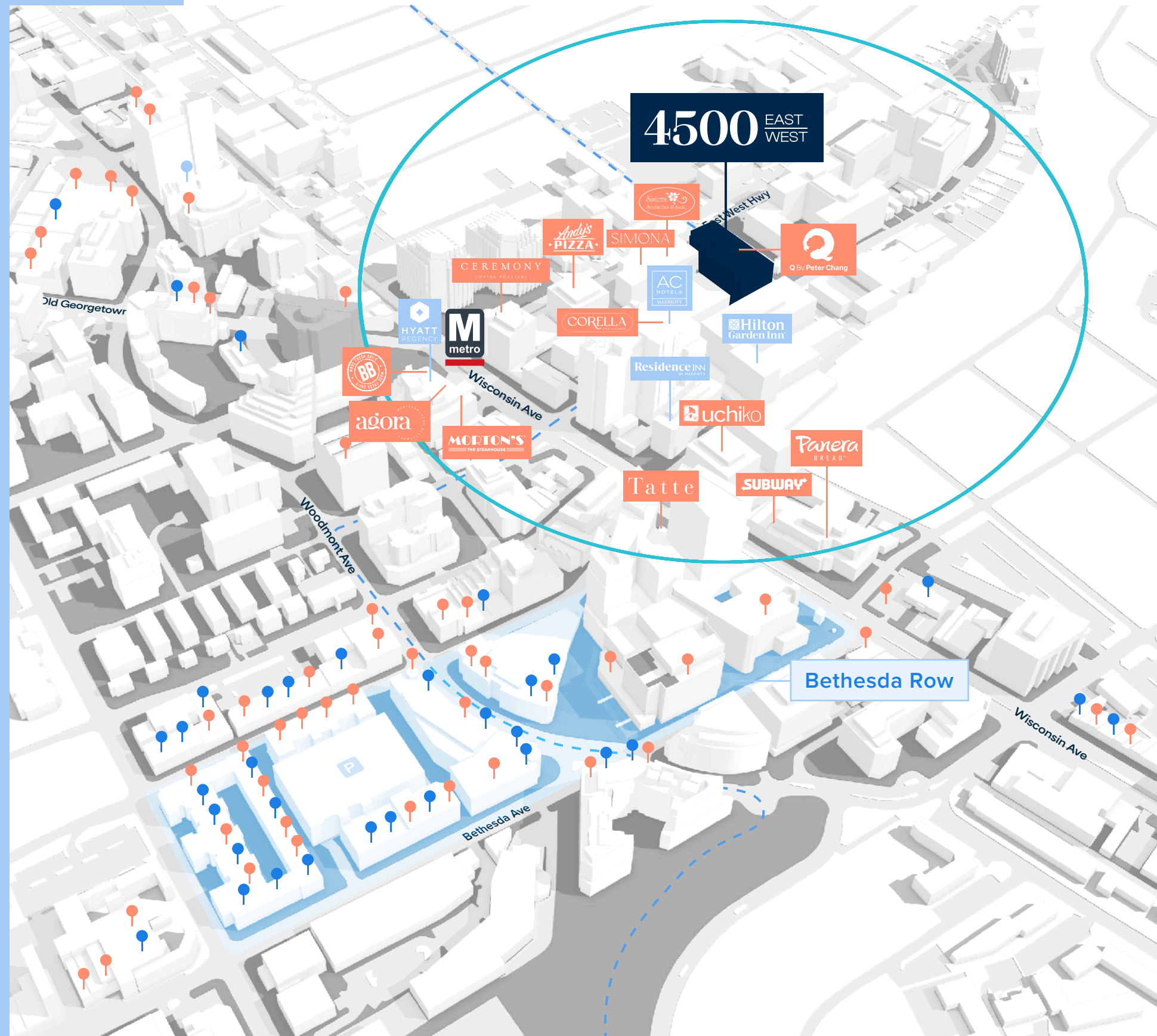
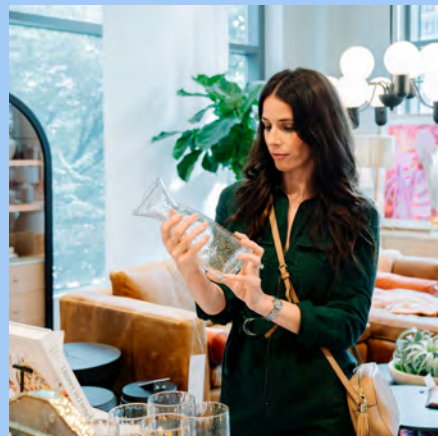
Monument signage opportunities provide strong street-level presence along East West Highway, maximizing exposure to daily traffic and passersby.

PRIME+ EASY ACCESS

Located just 700 feet from the Bethesda Metro station and steps away from major bus lines, food, retail, and bike paths, 4500 East West offers prime accessibility, no matter your mode of transportation. The building is two blocks from the upcoming Purple Line transit stop, serving downtown Bethesda.

<2 min. walk
to Bethesda Metro
station on the Red Line

6 min. walk
to Bethesda Row's
retail and restaurants



--- Capital Crescent Bike Trail ● Food/Restaurant ● Retail/Shopping ● Hotel



FOR LEASING INFORMATION

PHILLIP MCCARTHY

301.896.9011
phil.mccarthy@transwestern.com

KEITH FOERY

301.896.9028
keith.foery@transwestern.com

MARK BOYCE

301.896.9090
mark.boyce@transwestern.com

KARLA RIVERA

301.896.9016
karla.rivera@transwestern.com

Professionally Managed By



4500 EAST WEST HIGHWAY | BETHESDA, MD 20814