



# Church Space For Lease

2401 IRVINE AVENUE, NEWPORT BEACH, CA 92627



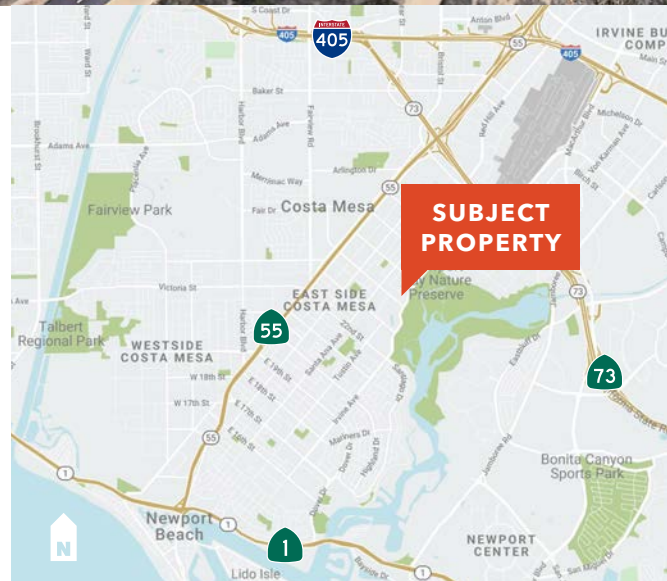
## Property Highlights

Shared use church space for lease in Newport Beach. Space includes sanctuary, kitchen, classrooms, storage, and on-site parking lot. Available Sunday afternoons and most weeknights. See next page for details and contact agent for more information. Please do not disturb the church.

**RILEY ROHDE**  
858.369.3041  
[riley.rohde@kidder.com](mailto:riley.rohde@kidder.com)  
LIC N° 02207141

**ROBERT FLETCHER**  
858.369.3034  
[robert.fletcher@kidder.com](mailto:robert.fletcher@kidder.com)  
LIC N° 01706060

**ERIC KNOWLES**  
858.369.3017  
[eric.knowles@kidder.com](mailto:eric.knowles@kidder.com)  
LIC N° 00944210



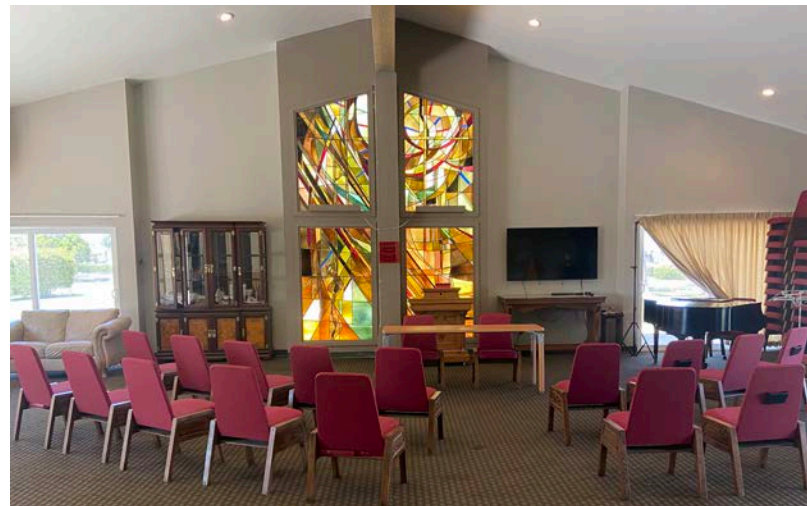
This information supplied herein is from sources we deem reliable. It is provided without any representation, warranty, or guarantee, expressed or implied as to its accuracy. Prospective Buyer or Tenant should conduct an independent investigation and verification of all matters deemed to be material, including, but not limited to, statements of income and expenses. Consult your attorney, accountant, or other professional advisor.



**FOR LEASE**

# Church Space

2401 IRVINE AVENUE, NEWPORT BEACH, CA 92627



## LEASE DETAILS

Space Available (±4,000 SF)	Sanctuary seats ±300, social hall (±200); classroom; restrooms
Days / Hours Available	Saturdays: all day Sundays: 1:00pm to 8:00pm Select weeknights: 6:00pm to 9:30pm
Term	Month-to-month up to 1-year initial term
Parking	On-site parking available
Janitorial	Tenant responsible for cleaning after each use
Non-profit	Tenant must be non-profit entity
Utilities	Landlord to pay utilities
Tours	Contact agent for touring instructions
Lease Rate	\$1,500/mo to \$4,000/mo (rate is dependent upon days, hours, amount of space used and total occupancy)

**RILEY ROHDE**  
858.369.3041  
[riley.rohde@kidder.com](mailto:riley.rohde@kidder.com)  
LIC N° 02207141

**ROBERT FLETCHER**  
858.369.3034  
[robert.fletcher@kidder.com](mailto:robert.fletcher@kidder.com)  
LIC N° 01706060

**ERIC KNOWLES**  
858.369.3017  
[eric.knowles@kidder.com](mailto:eric.knowles@kidder.com)  
LIC N° 00944210

**KIDDER.COM**

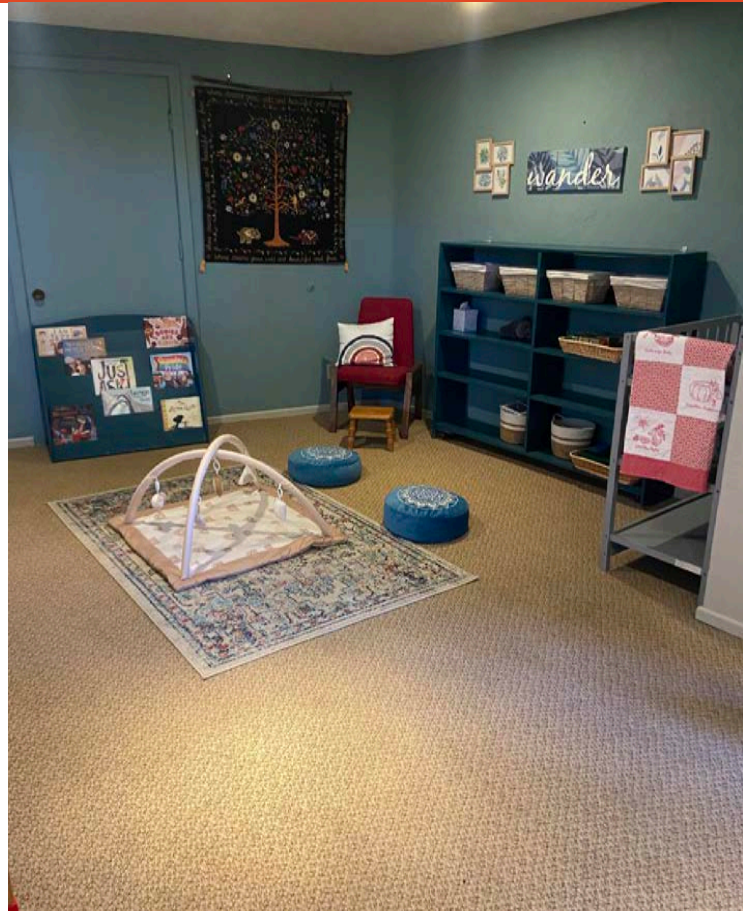
This information supplied herein is from sources we deem reliable. It is provided without any representation, warranty, or guarantee, expressed or implied as to its accuracy. Prospective Buyer or Tenant should conduct an independent investigation and verification of all matters deemed to be material, including, but not limited to, statements of income and expenses. Consult your attorney, accountant, or other professional advisor.



FOR LEASE

# Church Space

2401 IRVINE AVENUE, NEWPORT BEACH, CA 92627



**RILEY ROHDE**  
858.369.3041  
[riley.rohde@kidder.com](mailto:riley.rohde@kidder.com)  
LIC N° 02207141

**ROBERT FLETCHER**  
858.369.3034  
[robert.fletcher@kidder.com](mailto:robert.fletcher@kidder.com)  
LIC N° 01706060

**ERIC KNOWLES**  
858.369.3017  
[eric.knowles@kidder.com](mailto:eric.knowles@kidder.com)  
LIC N° 00944210

**KIDDER.COM**

This information supplied herein is from sources we deem reliable. It is provided without any representation, warranty, or guarantee, expressed or implied as to its accuracy. Prospective Buyer or Tenant should conduct an independent investigation and verification of all matters deemed to be material, including, but not limited to, statements of income and expenses. Consult your attorney, accountant, or other professional advisor.

