

66 Prescott Street

TO LET



London, E1 8HG
Offices



RENT

From £32.50 - £47.50
(per sq ft pa excl)



SERVICE CHARGE

£10.00
(per sq ft pa excl)



RATES PAYABLE

£10.50 / £21.50
(per sq ft (ye April 2025))



9,364 sq ft - 110,833 sq ft

870 sq m - 10,297 sq m



Location

The building is on the corner of Prescot Street and St Mark Street. The street has undergone a transformation in the last 5 years with a range of new hotels, high class residential and office developments. The building benefits from good transport links with Aldgate and Aldgate East Underground Stations circa 300m to the north and Tower Hill 300m to the south west.



Description

A large office building comprised of Lower Ground, Ground and seven upper floors, offering large open plan / fitted floors. The upper floors benefit from wrap around terraces. All floors benefit from views of the atrium running from the seventh floor to the Lower Ground Floor. The entrance comprises a refurbished lounge and manned reception.



Accommodation

The approximate Net Internal Areas comprise:

Floor	Sq Ft	Sq M
Seventh	9,364	870
Sixth	11,851	1,101
Fifth	13,745	1,277
Fourth	12,788	1,188
Third	13,853	1,287
Second	13,088	1,216
First	12,486	1,160
Ground - Circa	6,000 - 11,366	557 - 1,056
Lower Ground	12,292	1,142
Total	110,833	10,297



Amenities



4 Pipe Fan Air Con



Fully Accessible Recessed Floors



Suspended Ceiling



LED Lighting

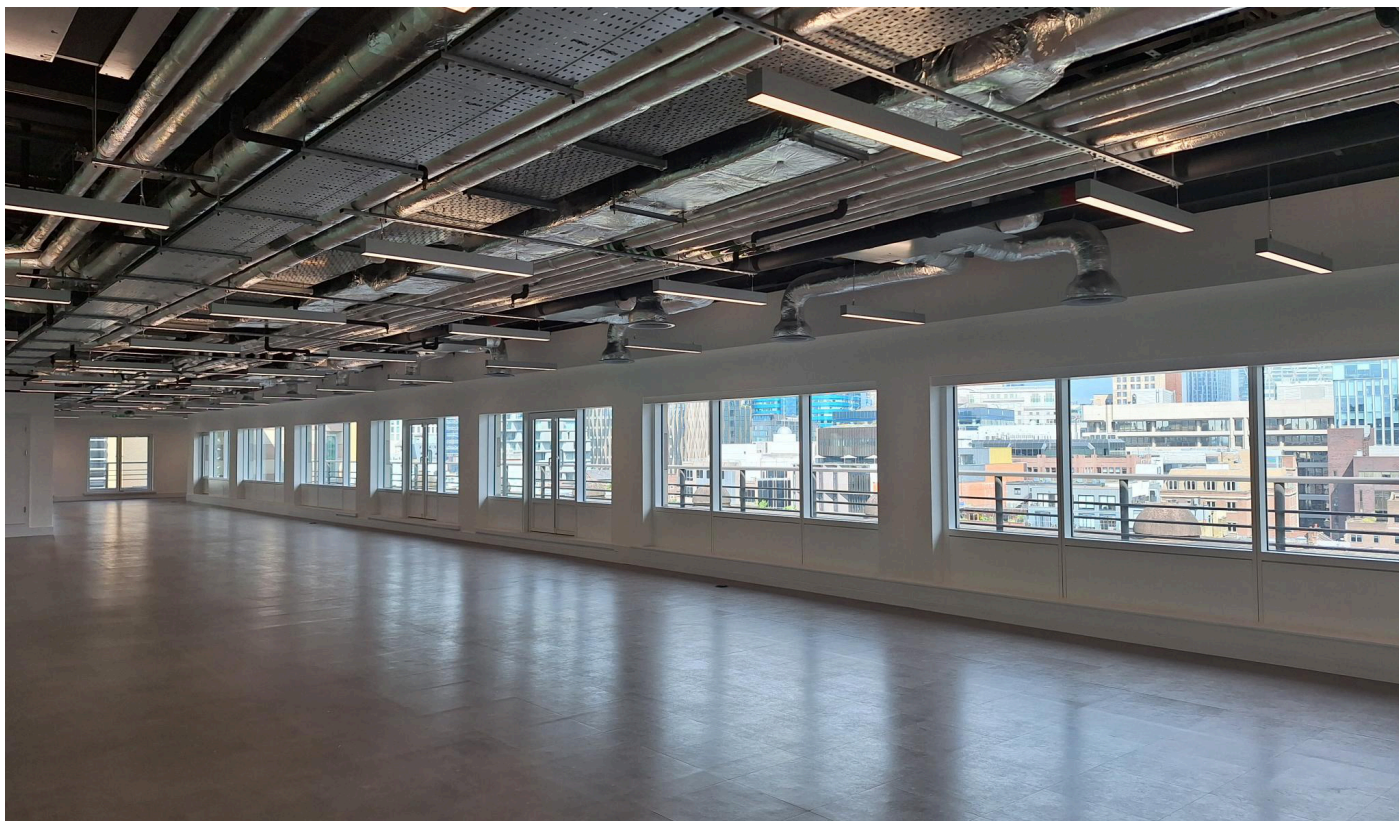


End of Journey Facilities



24 Hour Access





→ Further information

Lease Terms

A new flexible lease is available from the Landlord for a term by arrangement.

Rent

From £32.50 to £47.50 per sq ft pa excl.

Business Rates

Estimated at £10.50 - £21.50 per sq ft for the rating year April 2024 to April 2025. All parties are advised to make their own enquiries with the rating authority.

Legal Costs

Each party to be responsible for their own legal costs incurred in this transaction.

Service Charge

The current on account budget is £10.00 per sq ft pa excl.

EPC

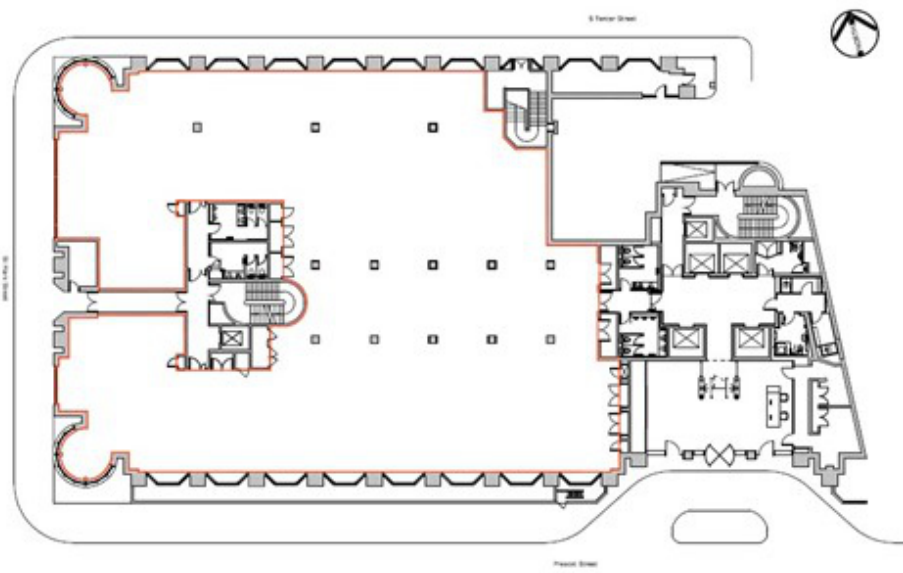
The EPC rating is D.

VAT

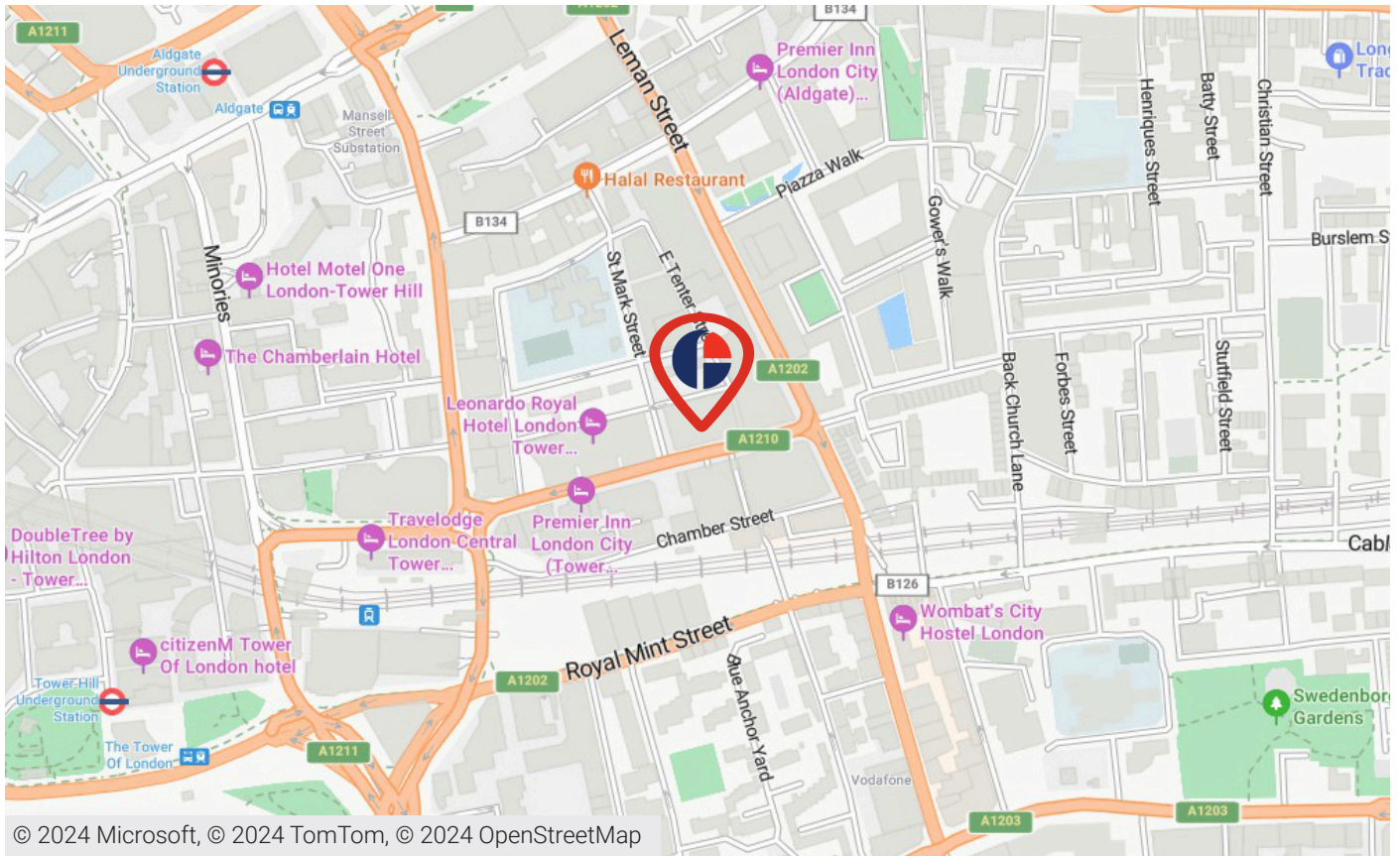
The property is elected to VAT which is therefore payable on rent and service charge.

Viewings

Viewings strictly by arrangement through sole agents Fisher German LLP and Newton Perkins.



66 Prescott Street, London E1 8HG



© 2024 Microsoft, © 2024 TomTom, © 2024 OpenStreetMap



Approximate Travel Distances



Nearest Station

- Aldgate East Underground Station - 6 min walk
- Tower Hill Underground Station - 7 min walk
- Aldgate Underground Station - 8 min walk
- Fenchurch Street Commuter Rail - 8 min walk



Contact



Richard Clarke



020 7367 5530



07811 790 179



richard.clarke@fishergerman.co.uk



Doug Gordon



020 7747 3117



07884 408 136



doug.gordon@fishergerman.co.uk



Joint Agent Newton Perkins



0207 456 0727

Please Note: Fisher German LLP and its Joint Agents give notice that: 1. They have no authority to make or give any representation or warranty on any property whether on their own behalf or on behalf of their clients or otherwise. 2. They do not owe any duty of care to you and assume no responsibility for any statements, representations, warranties or otherwise made in the particulars and you should not rely on those in the particulars. 3. The particulars are produced in good faith are set out as a general guide only and do not constitute or form an offer or a contract or part thereof. 4. Any photographs, descriptions, plans, measurements, distances and any other details in the particulars are approximate estimates only taken as the property appeared at the time and should not be relied upon as factually accurate. 5. Fisher German assumes prospective purchasers/tenants have carried out inspections to satisfy themselves that the information in the particulars is correct.

Particulars dated February 2025

Photographs dated June 2024.



fishergerman.co.uk