

Flamingo Park of Commerce



12080 Miramar Parkway, Miramar, FL



Facility Overview

271,360 total building square footage

2,605 total available square footage

650 SF office

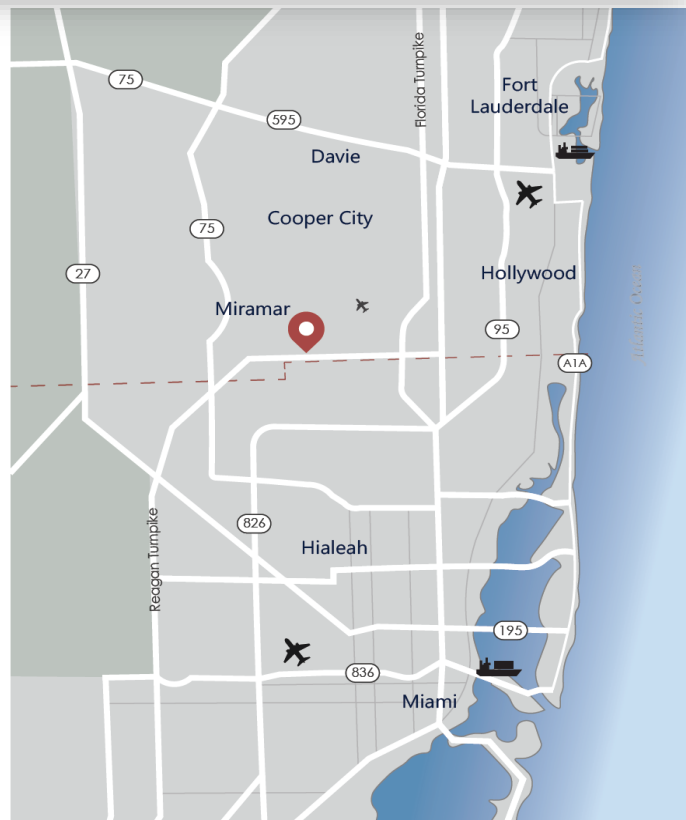
1,955 SF warehouse

3 private offices and one 10'x12'
overhead door

18' clear ceiling height

Centrally located

Zoned: PID



For more information, or to schedule a tour, please contact:

Dominick Ficarra

(954) 478-3918 Cell

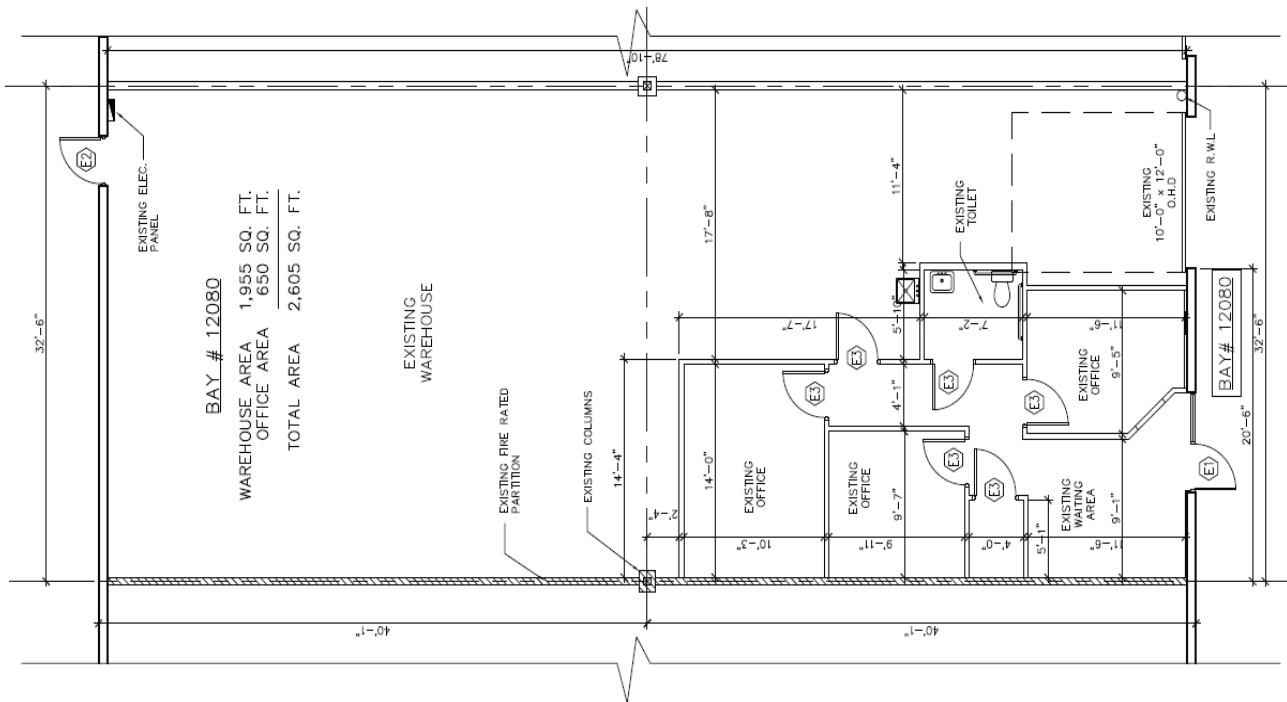
dominickf@montalbanoirealty.com



Flamingo Park of Commerce



12080 Miramar Parkway, Miramar, FL



AS BUILT / FLOOR PLAN

SUITE #12080

SCALE: 3/4"

For more information, or to schedule a tour, please contact:

Dominick Ficarra
 (954) 478-3918 Cell
 dominickf@montalbanorealty.com

