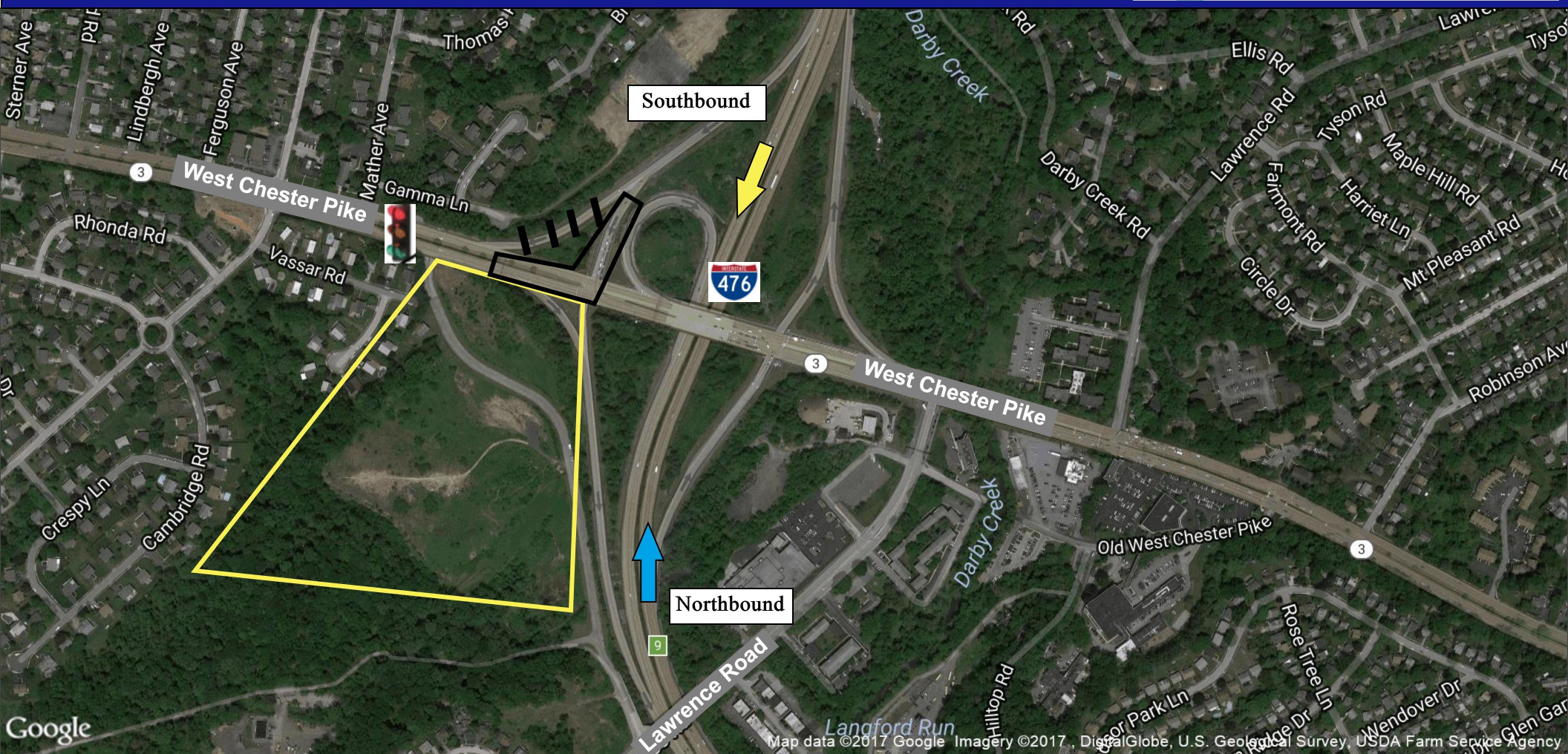
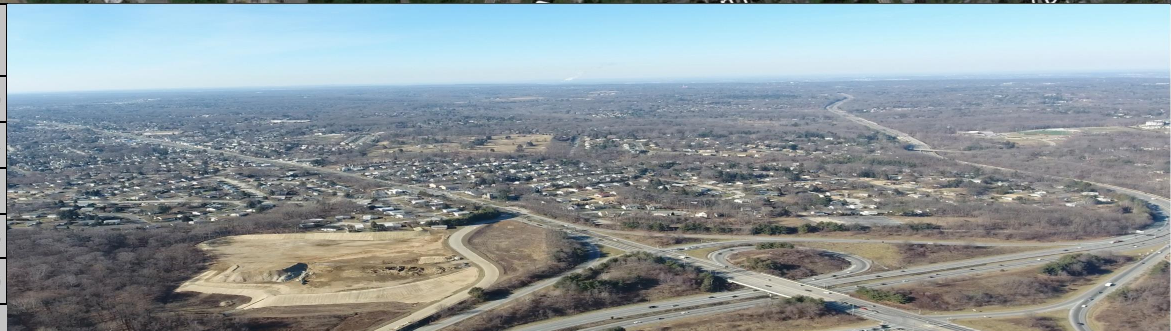


Midcounty Shopping Center

West Chester Pike (Route 3) & Blue Route (Interstate 476-Exit 9), Marple Township



| Demographics | 1 mi radius | 2 mi radius | 3 mi radius |
|---|--|-------------|-------------|
| Population | 12,876 | 48,481 | 112,319 |
| Households | 4,815 | 18,381 | 43,384 |
| 5 Yr Pop Growth (Total%) | 0.6% | 0.4% | 0.5% |
| Average HH Income | \$112,711 | \$116,359 | \$114,815 |
| Median HH Income | \$98,663 | \$100,203 | \$98,029 |
| 90,000 Vehicles Per Day (Blue Route) | 36,000 Vehicles Per Day (Route 3) | | |



(c) 2017, SITES USA Inc.

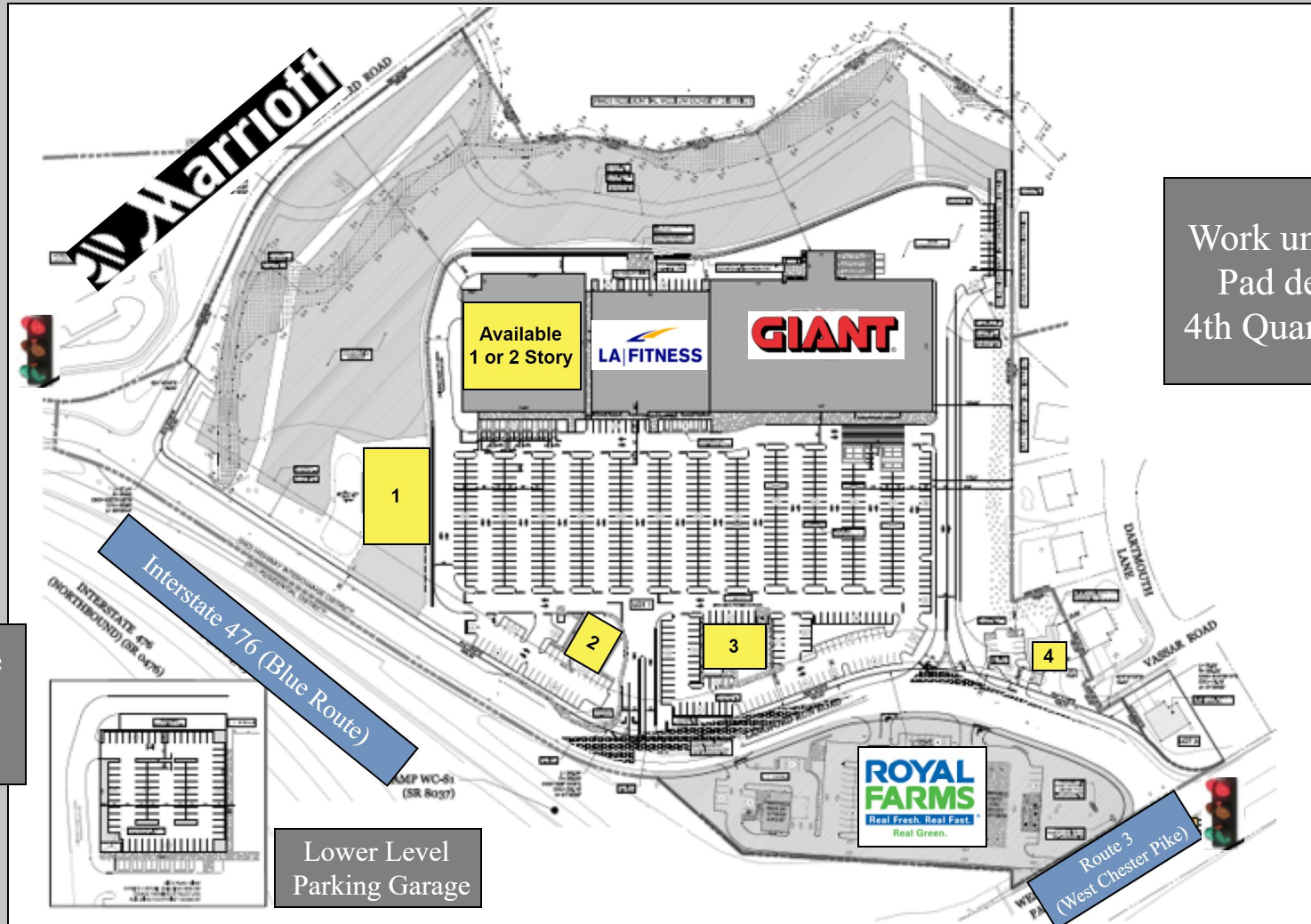
Nicole de Botton Robinson ~ 610.328.1700 ~ nicole@nrcdelco.com

Disclaimer: The statements, figures, calculations, images (including artistic impressions and computer generated images), dimensions, and representations ("information") contained in this document are provided for presentation purposes only and are subject to change. National Realty Corporation, their related companies and their representatives, consultants and agents make no representation or warranties as to the accuracy, completeness and or relevance or any information contained in this document.

Revised 12.9.19

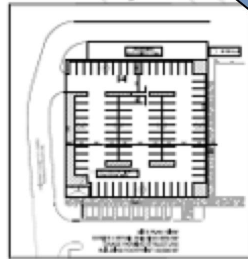
Midcounty Shopping Center

West Chester Pike (Route 3) & Blue Route (Interstate 476-Exit 9), Marple Township

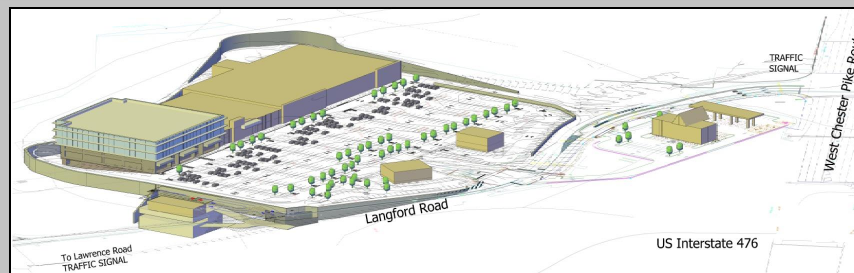


Work under way
Pad delivery
4th Quarter 2020

Visible signage
along
Blue Route



Lower Level
Parking Garage



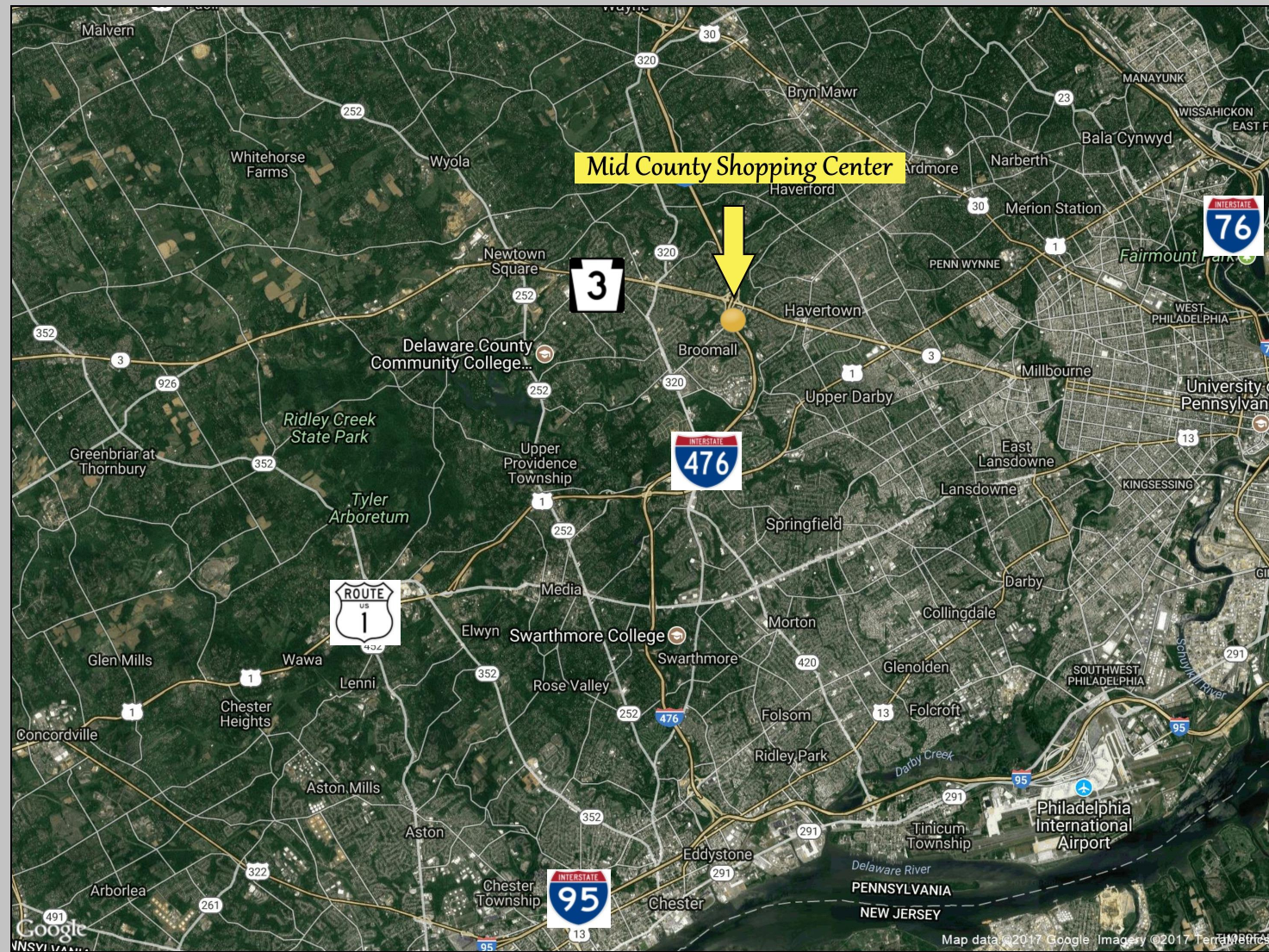
Midcounty Shopping Center

West Chester Pike (Route 3) & Blue Route (Interstate 476-Exit 9), Marple Township



Easy Access from Route 3
(West Chester Pike)

Visible signage on Interstate
476 (Blue Route)



★ 8 Miles from I-76

★ 7.5 Miles from I-95

★ 2.5 Miles from Rt. 1

★ 9 Miles from Philadelphia

Midcounty Shopping Center

West Chester Pike (Route 3) & Blue Route (Interstate 476-Exit 9), Marple Township



Just Opened!



Opening January 2020

