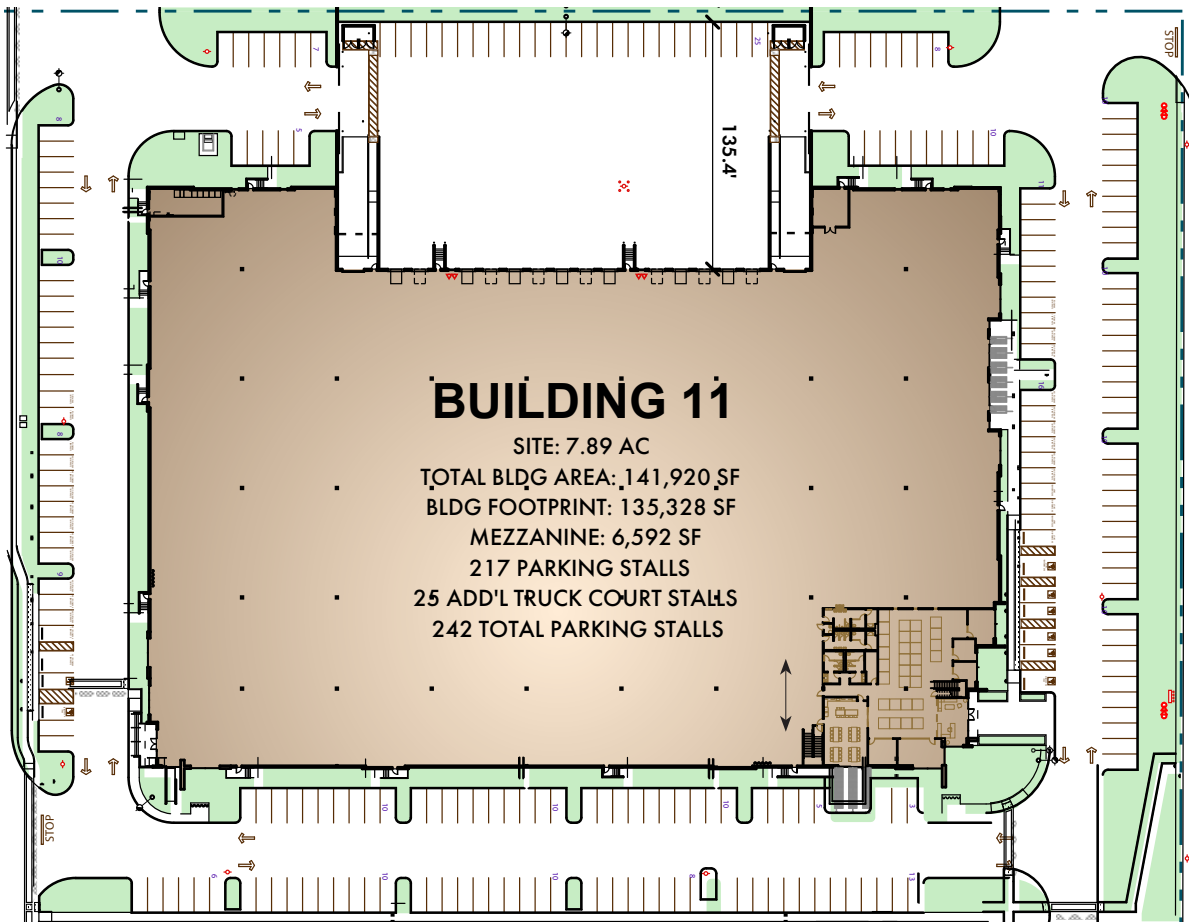


TORRANCE GATEWAY

PHASE III, BLDG. 11

141,920 SF



190TH STREET



Zac Sakowski
Executive Vice President
Lic. 01510420
T +1.424.294.3429
zac.sakowski@am.jll.com



John Schumacher
Vice Chairman
Lic. 00987225
T +1.310.363.4960
john.schumacher@cbre.com

Caroline Reid
Senior Associate
Lic. 02188038
+1 310 947 4219
caroline.reid@cbre.com

Nicki Peetz
Client Services Specialist
Lic. 01720809
+1 310 433 0602
nicki.peetz@cbre.com



**SARES REGIS
GROUP**