

MRC

For Lease

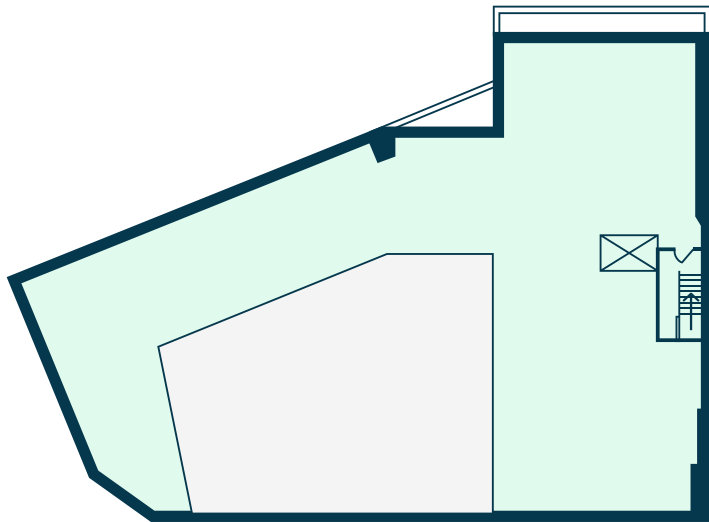
1602 Kings Highway 2nd & 3rd fl

Premier Office Space For Lease

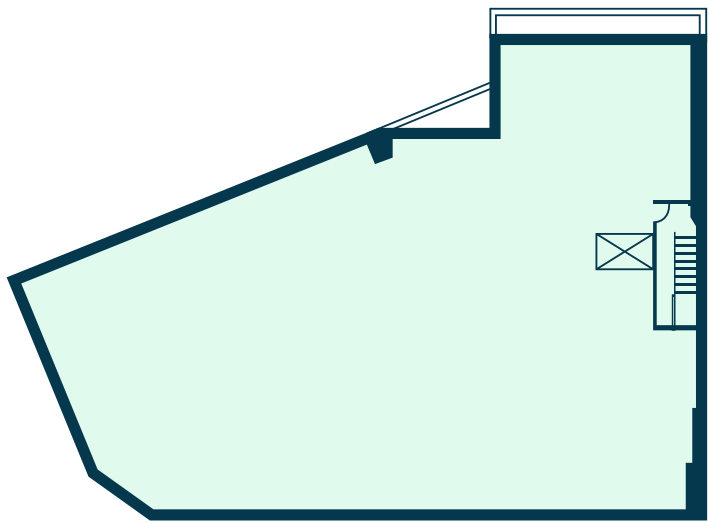
1,000 - 15,000 sq ft | 1602 Kings Highway 2nd & 3rd Fl | Brooklyn, NY 11229



FLOOR PLAN



2nd Floor
800-18,495 sq ft



3rd Floor
800-18,495 sq ft

OVERVIEW

- **Address:** 1602 Kings Highway 2nd & 3rd Fl, Brooklyn, NY 11229
- **Cross Streets:** Kings Highway and East 16th Street
- **Neighborhood:** Gravesend

SPACE DETAILS

- **Size:** 1,000 - 15,000 sq ft
- **Ceiling Height:** 13 ft
- **Frontage:** 162 ft

HIGHLIGHTS

- Ideal for School, Medical/Office
- All logical divisions considered
- Building is serviced by Elevator

TRANSPORTATION

- 🚗 2 min walk to B7, B82
- 🚆 1 min walk to train B, Q
- 📍 25 min drive to LGA, 20 min drive to JFK, 35 min drive to EWR

DEMOGRAPHICS

- **Population:** 41,000
- **Median Household Income:** \$73,000
- **Median Home Value:** \$820,000

NEIGHBORS

TJ Maxx, Sugaring NYC, Starbucks, Citibank, Bank of America, Chipotle, Okka Foods Market, Raising Canes, T-Mobile, 7th Street Burger, Paris Baguette, Snipes, Fabco, CVS, Planet Fitness, New York Life, Telco, Flagstar Bank, Subway, Verizon, Walgreens, Marshalls, Apple Bank, Dime Bank

MRG

1602 Kings Highway 2nd & 3rd fl Brooklyn, NY 11229

FOR MORE INFORMATION
PLEASE CONTACT:

JONATHAN LIB
212-314-4684 Ext. 114
Jonathan@mrgny.com

