

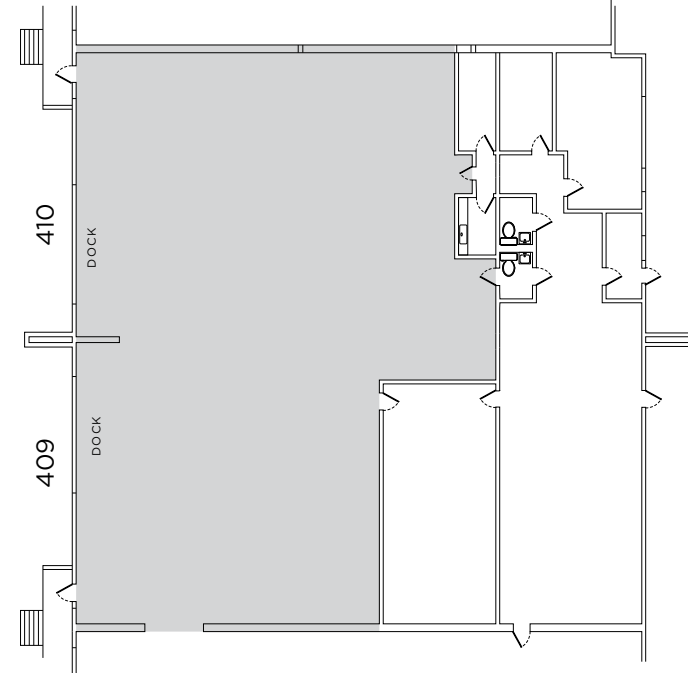
GALLERY



10840 GUILFORD ROAD

FLOOR PLAN

- Total SF Available: 6,000 SF
- Office: 2,210 SF
- Warehouse: 3,790 SF



CONTACT INFO

Charles Fenwick
Managing Director
+1 410 804 8189
charles.fenwick@cushwake.com

Alex Light
Associate
+1 410 864 3552
alex.light@cushwake.com

One East Pratt Street, Suite 700
Baltimore, MD 21202
cushmanwakefield.com



©2024 Cushman & Wakefield. All rights reserved. The material in this presentation has been prepared solely for information purposes, and is strictly confidential. Any disclosure, use, copying or circulation of this presentation (or the information contained within it) is strictly prohibited, unless you have obtained Cushman & Wakefield's prior written consent. The views expressed in this presentation are the views of the author and do not necessarily reflect the views of Cushman & Wakefield. Neither this presentation nor any part of it shall form the basis of, or be relied upon in connection with any offer, or act as an inducement to enter into any contract or commitment whatsoever. NO REPRESENTATION OR WARRANTY IS GIVEN, EXPRESS OR IMPLIED, AS TO THE ACCURACY OF THE INFORMATION CONTAINED WITHIN THIS PRESENTATION, AND CUSHMAN & WAKEFIELD IS UNDER NO OBLIGATION TO SUBSEQUENTLY CORRECT IT IN THE EVENT OF ERRORS.