

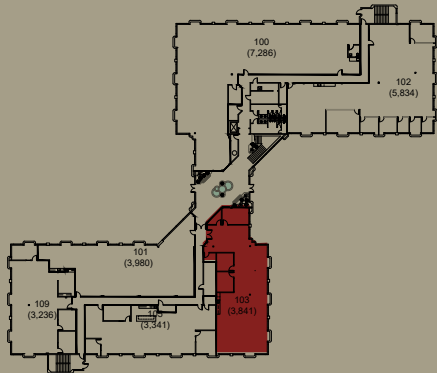


## 1<sup>st</sup> Floor

Suite 103 / ±3,841 SF

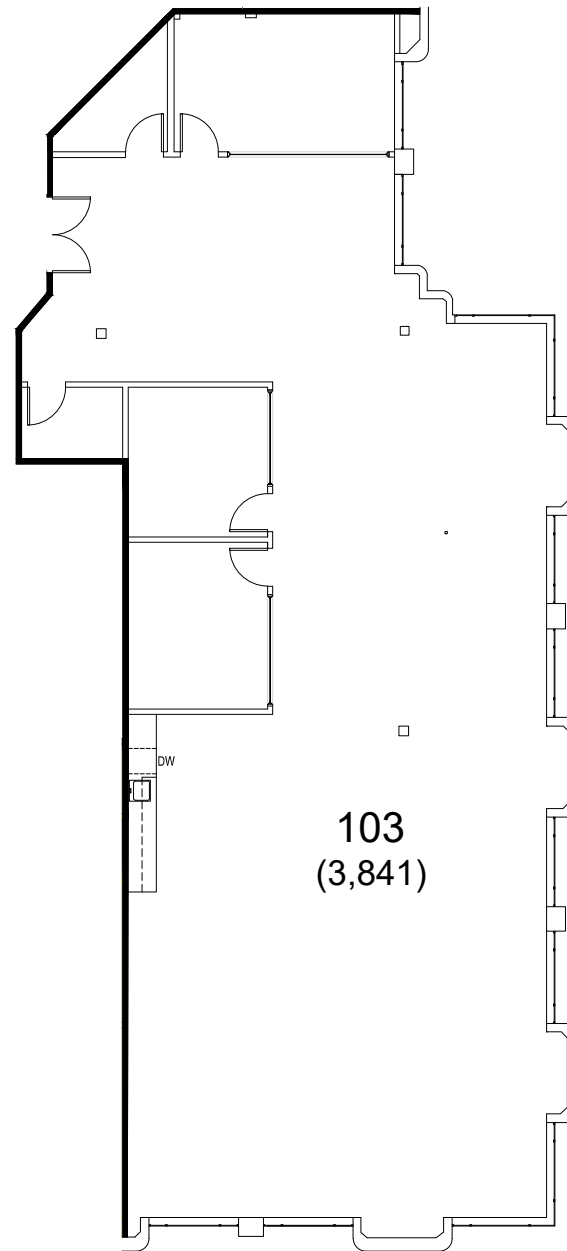
- 2 Private Offices
- Conference Room
- 2 Phone Rooms
- Break Area
- Large Open Space
- Available Now

### KEY PLAN



### CONTACT US

Chris Blom | Executive Vice President | +1 650 480 2057 | [chris.blom@jll.com](mailto:chris.blom@jll.com) | LIC #02031205  
Ben Paul | Vice Chairman | +1 650 401 2123 | [ben.paul@cushwake.com](mailto:ben.paul@cushwake.com) | LIC #01210872



103  
(3,841)

[BACK TO AVAILABILITIES](#)

