

PLUG-N-PLAY OFFICE SPACE FOR LEASE



66 W Flagler St., Miami, FL 33130

PROPERTY HIGHLIGHTS

- Located in the heart of Downtown Miami's business district
- Across the street from Miami Dade Courthouse
- Seamless access to transit and key downtown destinations
- Surrounded by renowned dining options, upscale shopping, and cultural landmarks
- Exceptional accessibility to I-95 and approximately .8 miles from Brickell City Centre
- Flagler Street Beautification Project, an enriched pedestrian experience with expanded sidewalks, large shade trees, outdoor café dining, improved LED lighting, signage, public art, and seating



\$46.00/sf FS
ASKING RATE

3 min walk
GOVERNMENT
METRO STATION

6 min walk
BRIGHTLINE



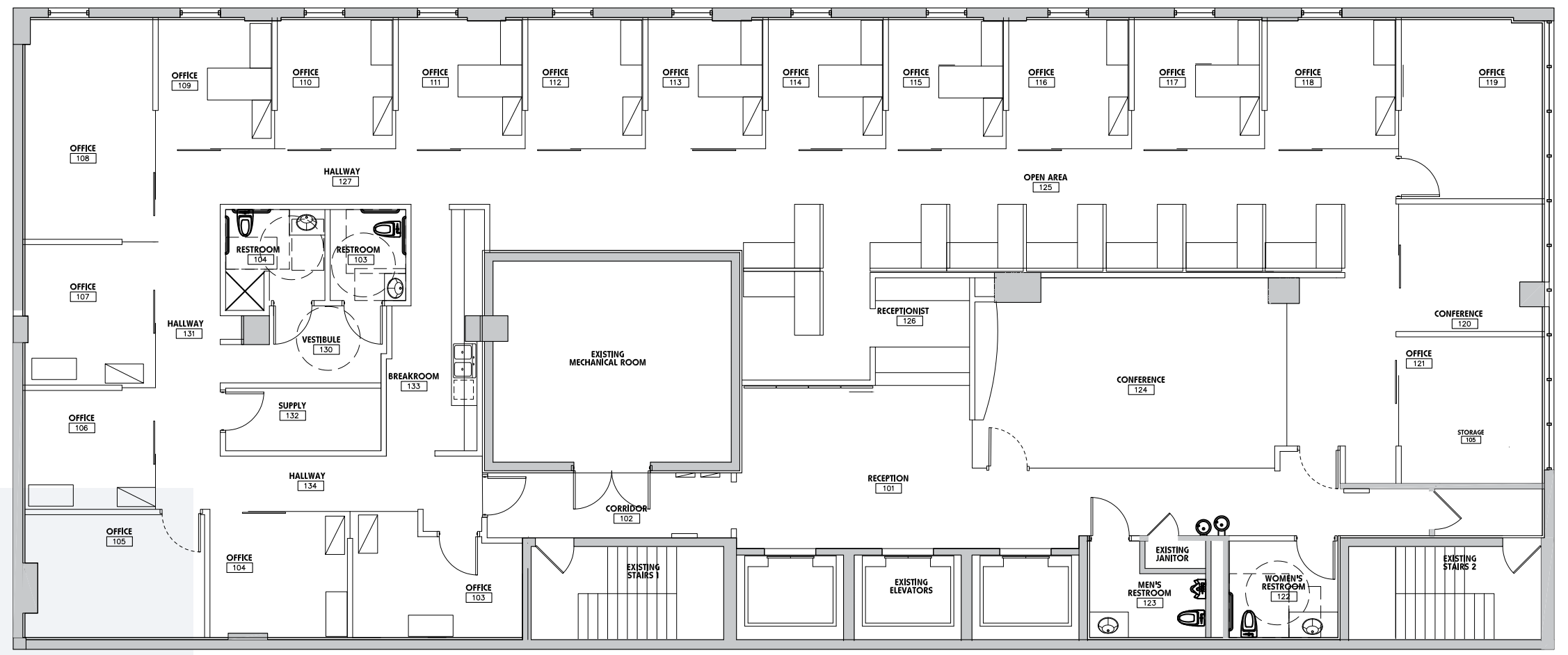
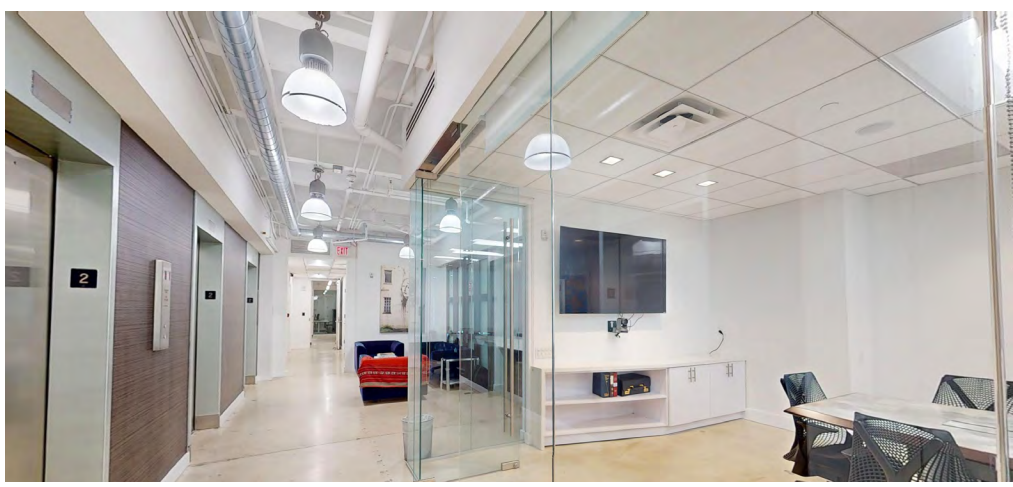
FLAGLER STREET BEAUTIFICATION PROJECT



VIEW VIRTUAL TOUR



7,536 SF
2ND FLOOR

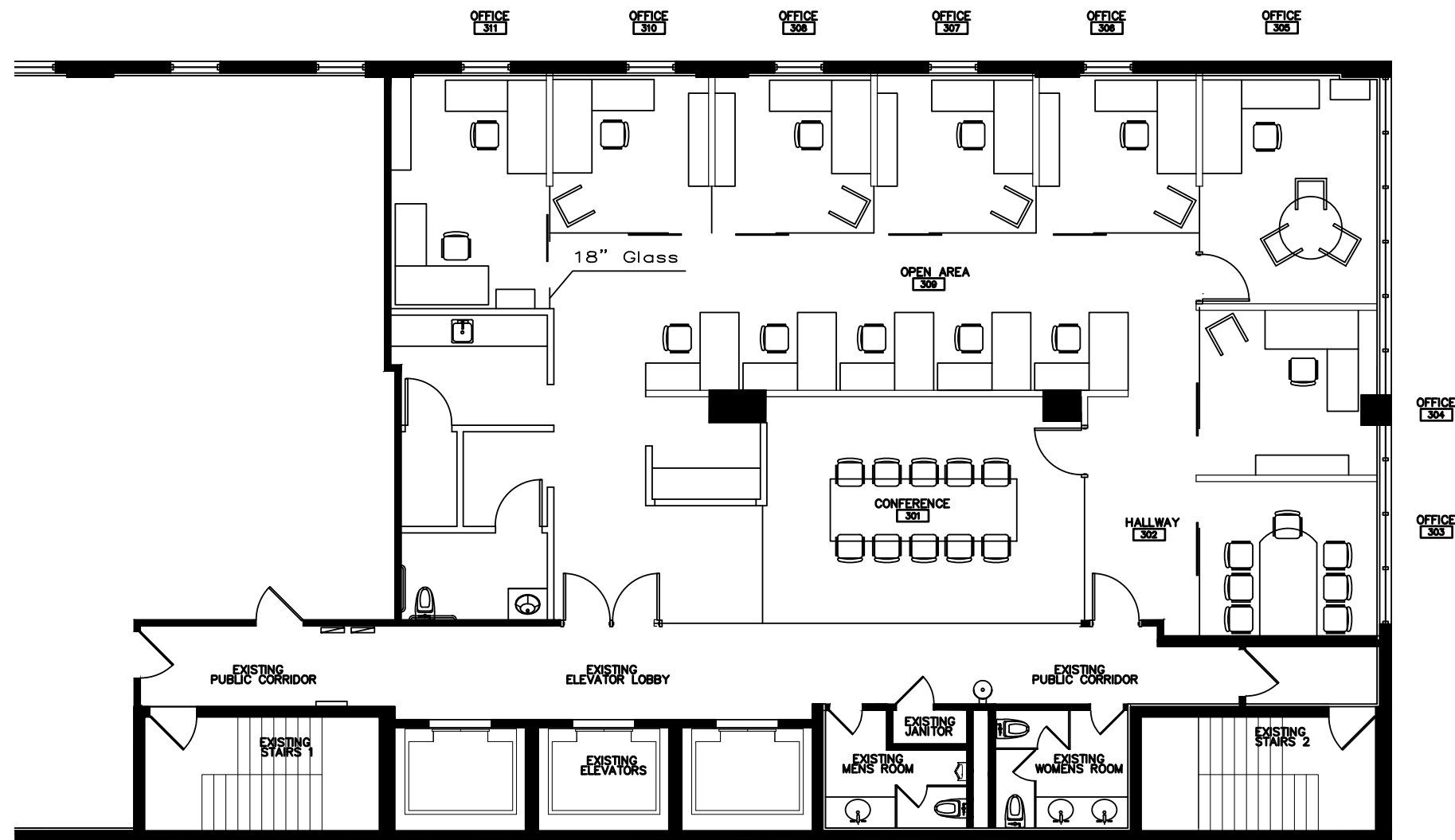




VIEW VIRTUAL TOUR



2,880 SF
3RD FLOOR



For more information, please contact:

HARRISON MISCHEL, MBA

Senior Director

1 SE 3rd Ave, Suite 1010, Miami, FL 33131

Direct: 305.935.4374 | Cell: 305.332.2136

hmischel@tcrefl.com

TCRE



66 W Flagler St., Miami, FL 33130

