

MRG

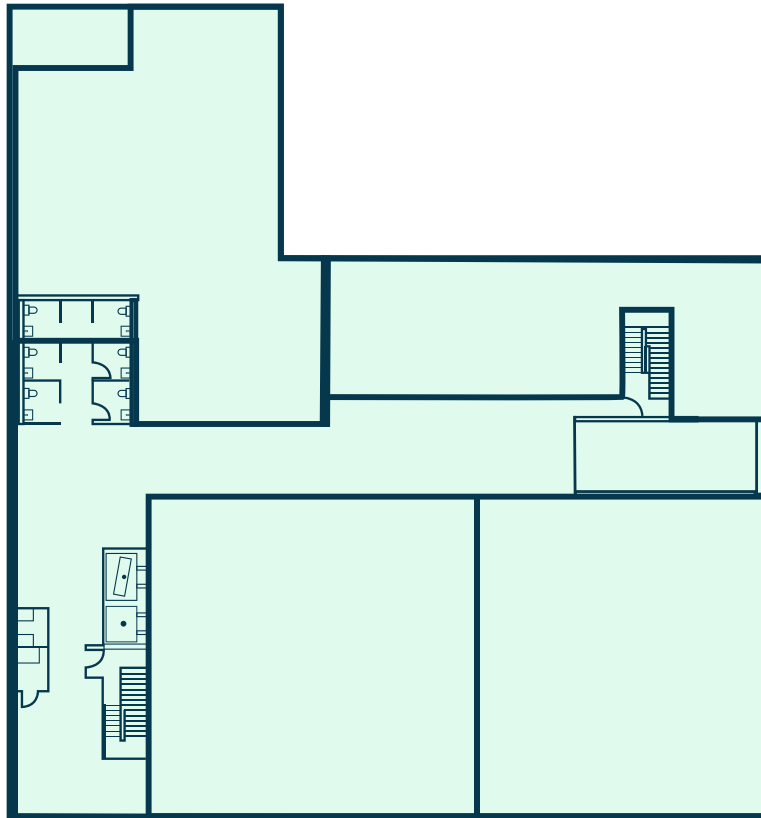
For Lease

# 2700 Church Ave

Prime 2nd Floor Space With Wrap Around Frontage  
16,000 sq ft | 2700 Church Ave | Brooklyn, NY 11226



# FLOOR PLAN



CHURCH AVE

## OVERVIEW

- **Address:** 2700 Church Ave, Brooklyn, NY 11226
- **Cross Streets:** Rogers Ave and Llyod Pl
- **Neighborhood:** Flatbush

## SPACE DETAILS

- **Size:** 16,000 sq ft
- **Ceiling Height:** 11 ft
- **Frontage:** 150 ft

## HIGHLIGHTS

- Brand New Development
- Division Options
- Glass Storefronts
- HVAC
- High Foot Traffic Location
- ADA Accessible

## TRANSPORTATION

- 1 min walk to B35, B49, B44+
- 4 min walk to train 2, 5
- 25 min drive to LGA, 20 min drive to JFK, 45 min drive to EWR

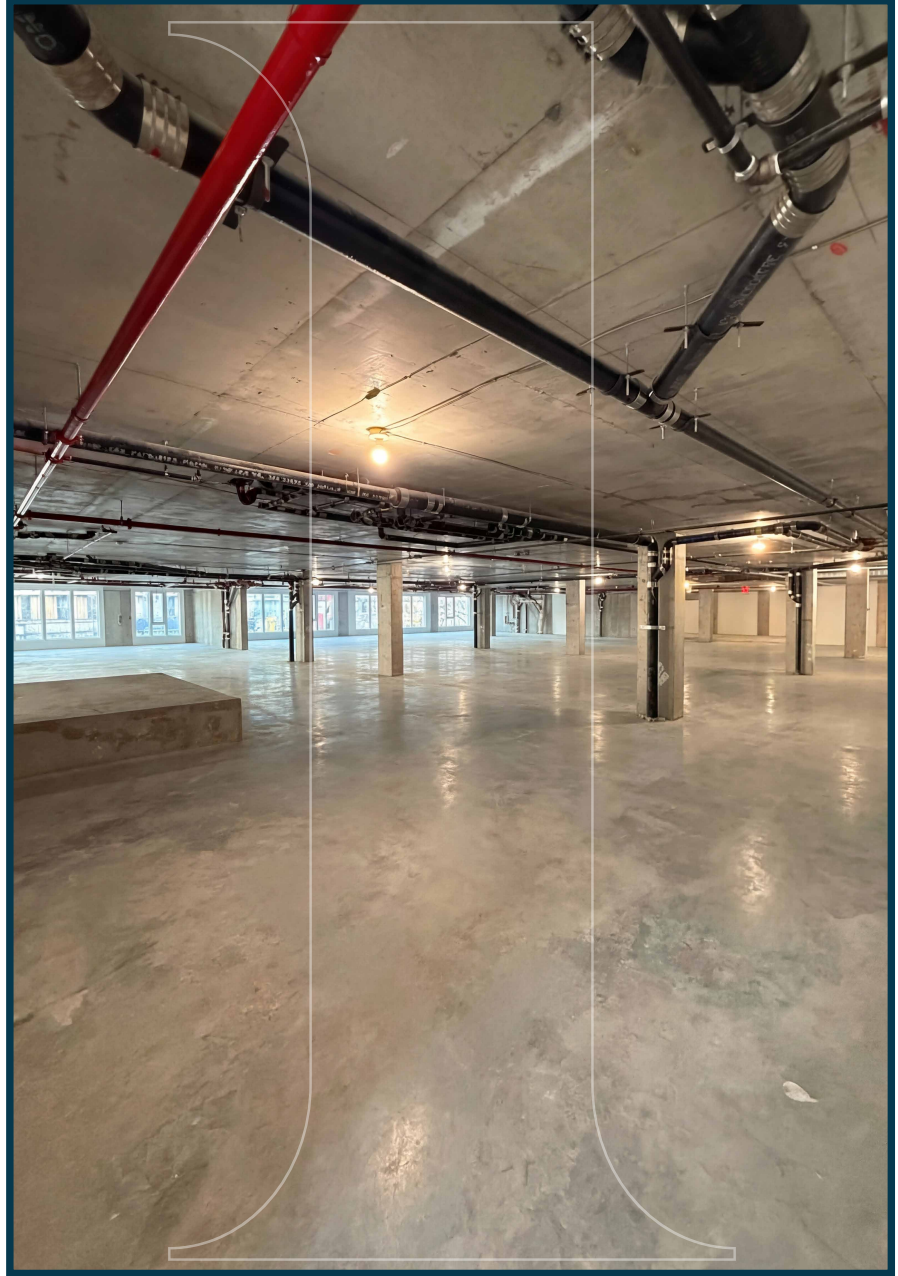
## DEMOGRAPHICS

- **Population:** 93,000
- **Median Household Income:** \$81,000
- **Median Home Value:** \$870,000

## NEIGHBORS

Baili, Bebe Fritay, THE SWISS SLICE GT, Cake Ambiance, Kreyol Flavor, Cooklyn Eats BK, Exquisite Express, Pizza Hut, Caribbean Vibes New York, Lucky Lotto Deli, Rogers Burgers, Drip Beverage Lounge, Sajomita, Chase Bank, Advanced Oral Surgery of Brooklyn

# INTERIOR PHOTOS



Prime 2nd Floor Space With Wrap Around Frontage For Lease

# MRG

## 2700 Church Ave Brooklyn, NY 11226

FOR MORE INFORMATION  
PLEASE CONTACT:

**MOSHE AKIVA**  
212-314-4684 Ext. 103  
Moshe@mrgny.com

**VICTOR SAFENIA**  
212-314-4684 Ext. 107  
Victors@mrgny.com

