

SPACE AVAILABLE FOR LEASE

# REVEL INDUSTRIAL PARK

11937 Woodside Avenue, Lakeside, CA 92040

*\*Leasing Special\**



**\*\*\*\$1.40 Per SF for First Six Months\*\*\***



REPRESENTED BY  
Rocket Glass, CCIM  
DRE #01787282

PHONE  
Office: 619.786.7237  
Cell: 858.344.9916

EMAIL  
rocket@rocketrealty.properties

SPACE AVAILABLE FOR LEASE

# REVEL INDUSTRIAL PARK

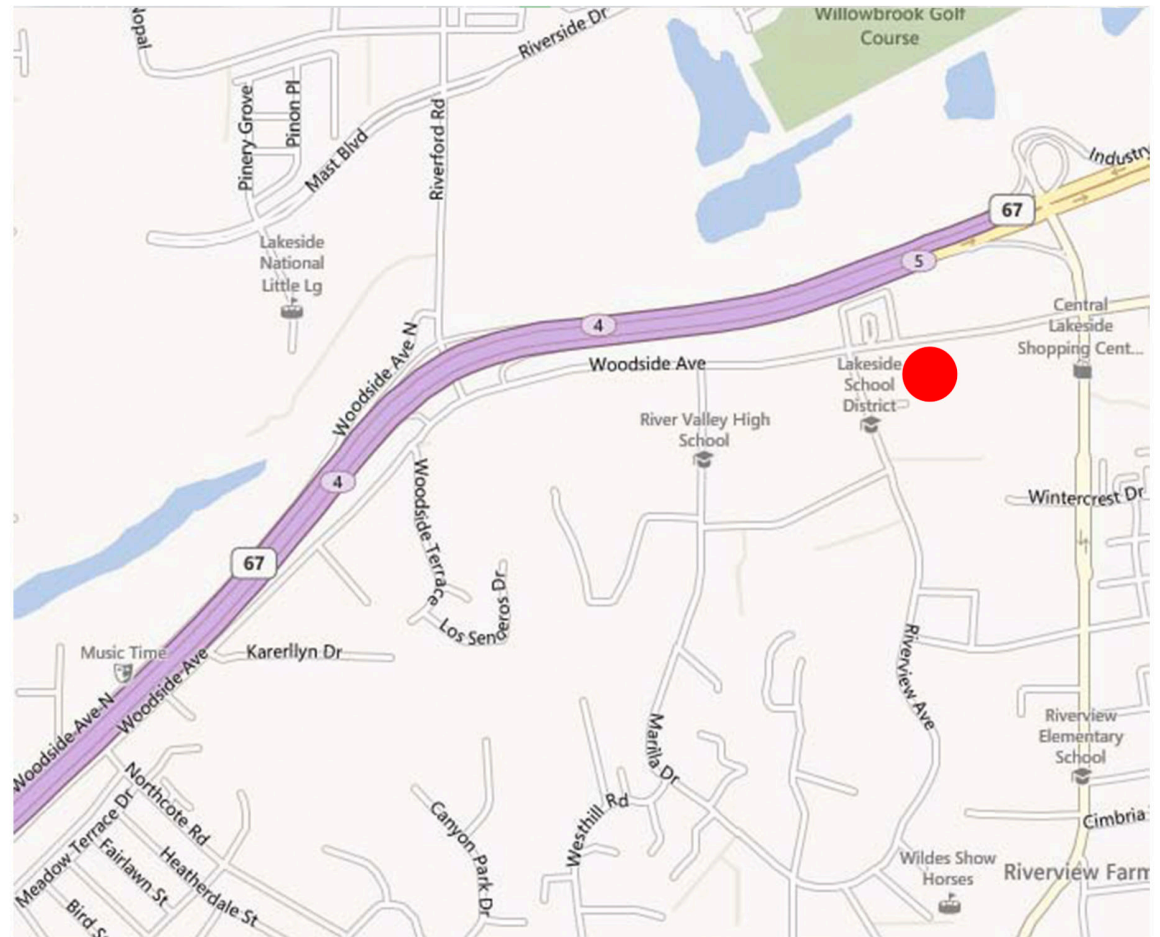
11937 Woodside Avenue, Lakeside, CA 92040

## PROPERTY FEATURES

**Intro Rate: \$1.40 Gross for 6 Months!!!!**

*\*Acceptable Term and Financials*

- Very Easy Freeway Access
- 3 Phase Power Available
- **County of San Diego C36 Zoning**
- Approx. 16 ft clear height
- High speed internet from COX
- Professionally Managed
- One Grade Level Roll Door per Suite
- **Suite A - 1,959 SF - \$1.75 Gross + Elec.**
- Three Offices, One Restroom, End-Cap
- Available Now
- **Suite B & B1 - 4,144 SF - \$1.75 Gross + Elec.**
- Three Offices, Two Restroom
- Available June 1, 2026



REPRESENTED BY  
Rocket Glass, CCIM  
DRE #01787282

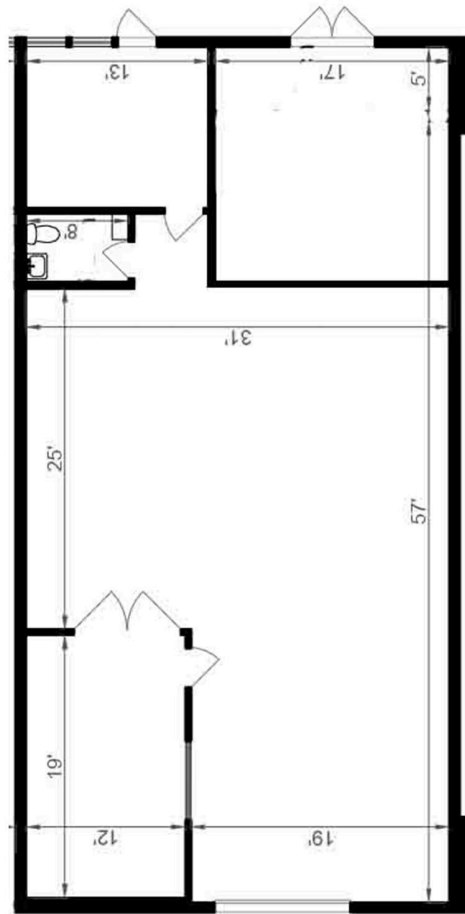
PHONE  
Office: 619.786.7237  
Cell: 858.344.9916

EMAIL  
rocket@rocketrealty.properties

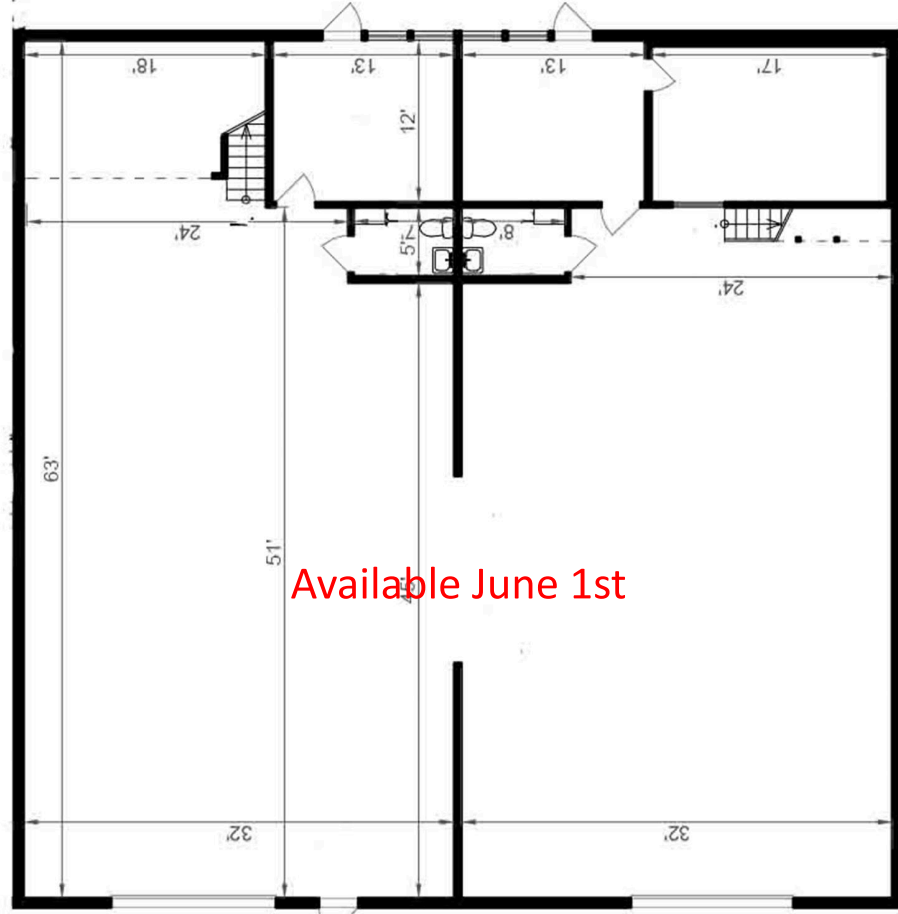
SPACE AVAILABLE FOR LEASE

# REVEL INDUSTRIAL PARK

11937 Woodside Avenue, Lakeside, CA 92040



Suite A - 1,959 SF



Suite B & B1 - 4,144 SF Combined



REPRESENTED BY  
Rocket Glass, CCIM  
DRE #01787282

PHONE  
Office: 619.786.7237  
Cell: 858.344.9916

EMAIL  
rocket@rocketrealty.properties