

Voit
REAL ESTATE SERVICES

MULVANEY SIOR
COMMERCIAL
ALLIANCE CCIM



12255

**CROSTHWAITE CIRCLE
POWAY, CALIFORNIA 92064**

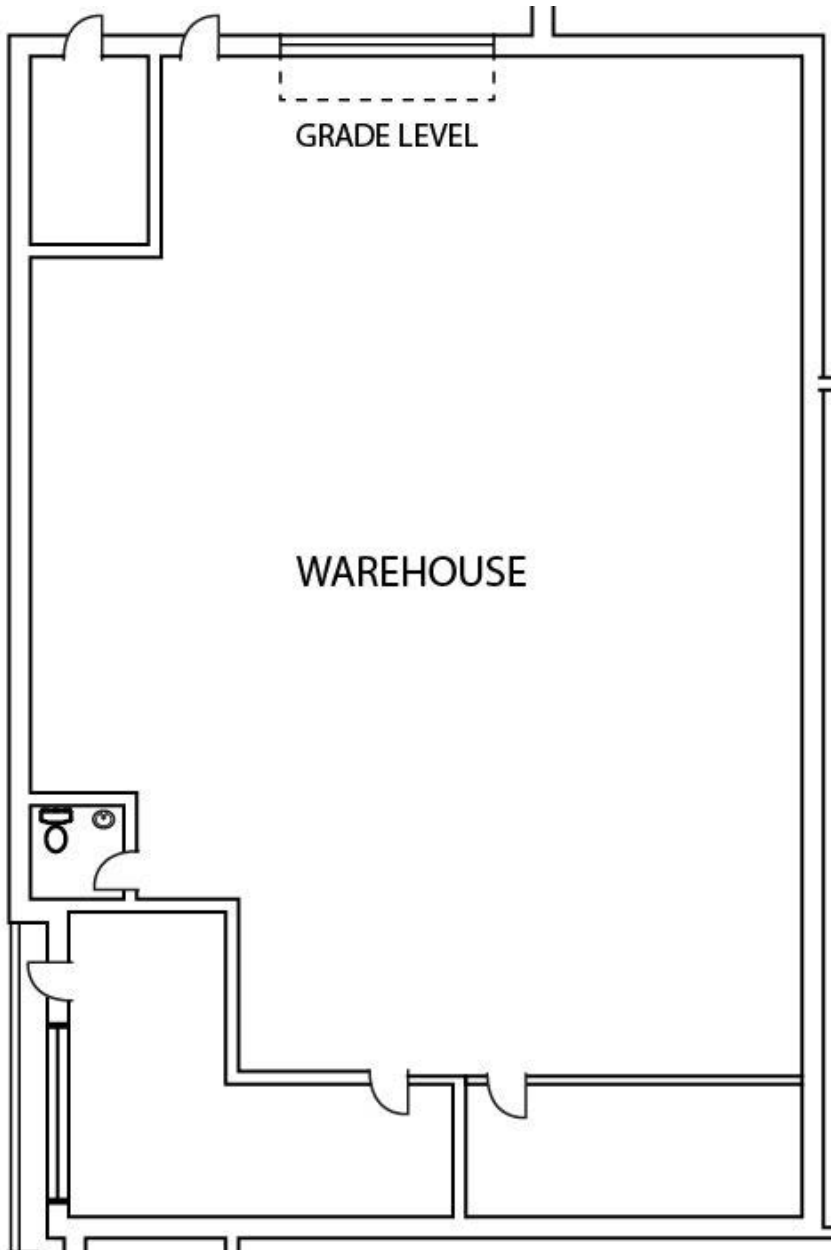
FOR
SUBLEASE

HIGH QUALITY OFFICE AREA // DOCK & GRADE LEVEL LOADING // GREAT POWAY LOCATION

12255

CROSTHWAITE CIRCLE
POWAY, CALIFORNIA 92064

FLOOR PLAN



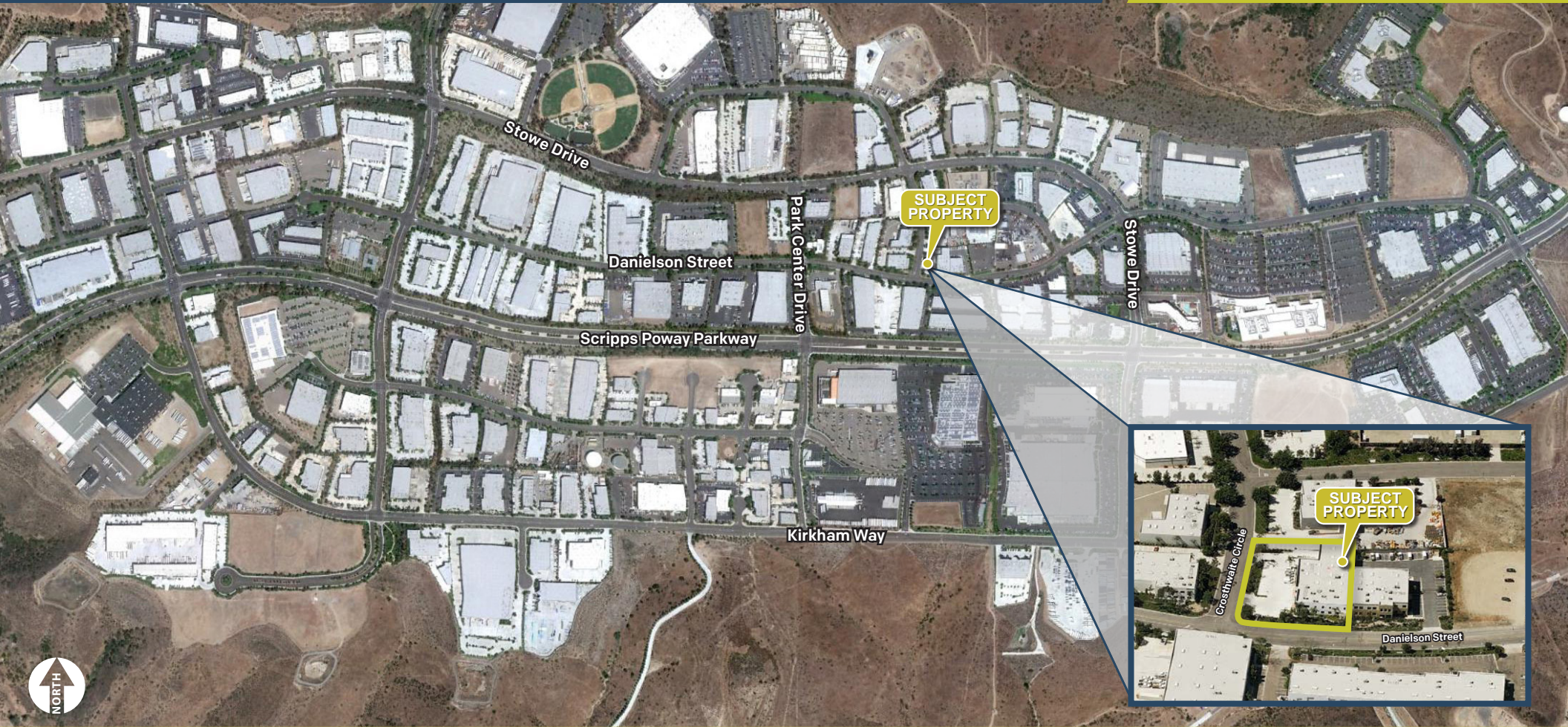
PROPERTY FEATURES

- ±4,330 SF AVAILABLE
- HIGH QUALITY OFFICE & WAREHOUSE
- GRADE LEVEL LOADING

SUITE	SIZE (SF)	RATE	AVAILABILITY	SUBLEASE EXPIRATION
B	±4,330 SF	\$1.45/SF Gross	NOW	8/31/2027

12255 CROSTHWAITTE CIRCLE POWAY, CALIFORNIA 92064

FOR
SUBLEASE



JOSH WEST, SIOR

Senior Vice President, Partner

858.458.3358 | jwest@voitco.com | Lic. #01923375

BRIAN MULVANEY, CCIM, SIOR

Senior Vice President, Partner

858.458.3372 | bmulvaney@voitco.com | Lic. #00938944

Voit
REAL ESTATE SERVICES

MULVANEY SIOR
COMMERCIAL ALLIANCE 

4180 La Jolla Village Drive, Suite 100, La Jolla, CA 92037 | 858.453.0505 | 858.408.3976 Fax | Lic #01991785 | www.voidco.com