

**1 SUITE D205 LEASING PLAN - CONCEPT A**  
 1/4" = 1'-0"  
 0 2 4 8'

ISS	DATE	DESCRIPTION OF ISSUE	CHK
1	10/19/08	FOR LEASING	CMK

ISS.	DATE	DESCRIPTION OF ISSUE	CHK
1	08/19/22	FOR LEASING	

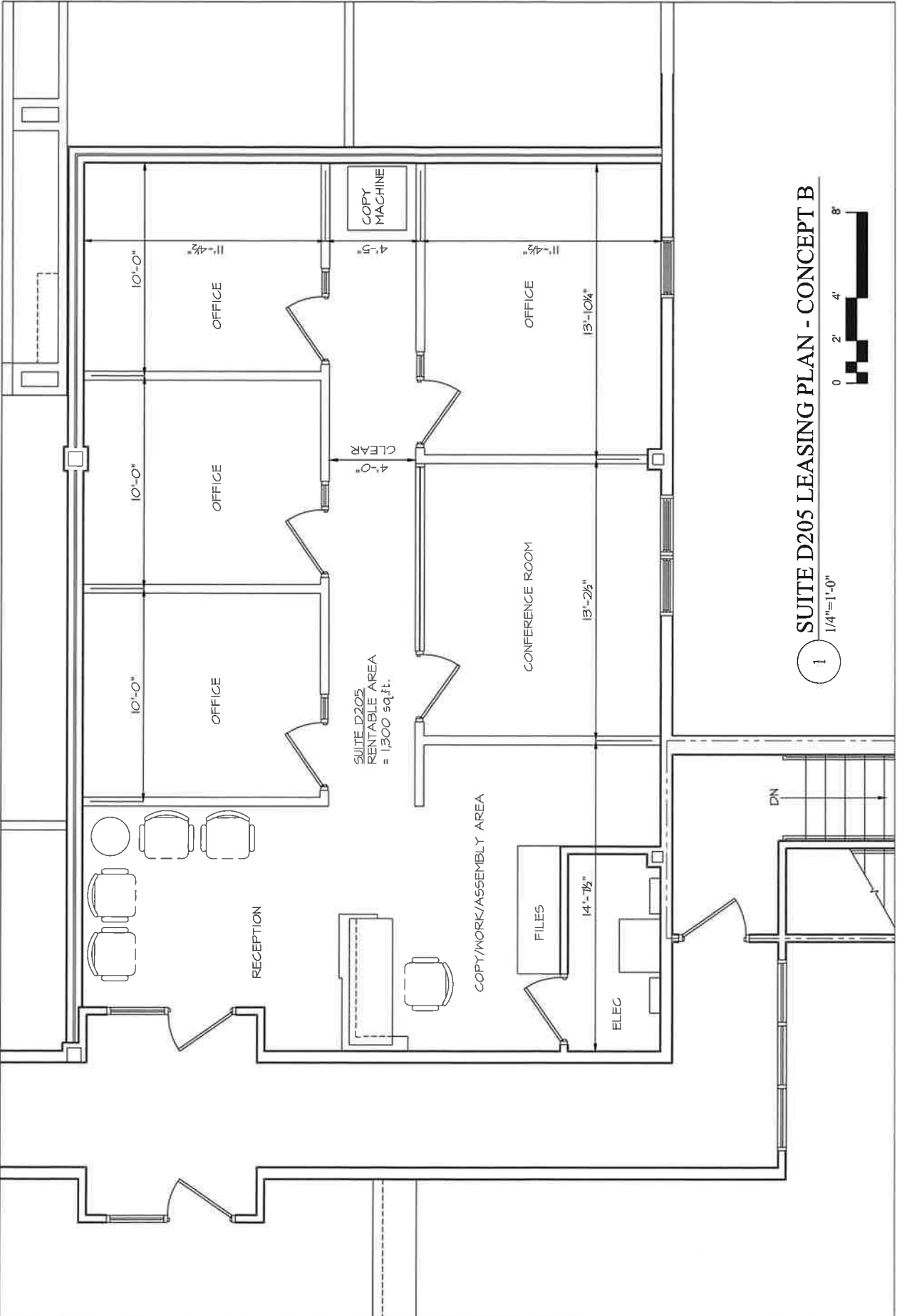
**EMANUEL ENGINEERING**  
 115 TRAVING RD. SUITE 100  
 PORTSMOUTH, NH 03801  
 TEL: 603.883.7447  
 WWW.EMANUELENG.COM

THE STRUCTURAL, PROFESSIONAL ENGINEER STAMP APPLIED TO THIS DRAWING DOES NOT COVER OTHER DISCIPLINES SUCH AS ELECTRICAL, PLUMBING, LIFE SAFETY, ETC.

**MILBROOK OFFICE PARK**  
**BUILDING "D"**  
**118 PORTSMOUTH AVE**  
 STRATHAM, NH

PREPARED BY: EMANUEL ENGINEERING  
 DRAWN BY: MCV  
 CHECKED BY: FSE  
 DATE: 08/19/22

**L D205**  
 SUITE D205  
 LEASING PLAN  
 CONCEPT B  
 JOB #: 19-001  
 SCALE: AS NOTED  
 SHEET: 2 OF 2



**SUITE D205 LEASING PLAN - CONCEPT B**

1

1/4" = 1'-0"

