

SOUTHAMPTON.  
18  
PLACE.

SOUTHAMPTON  
18  
PLACE



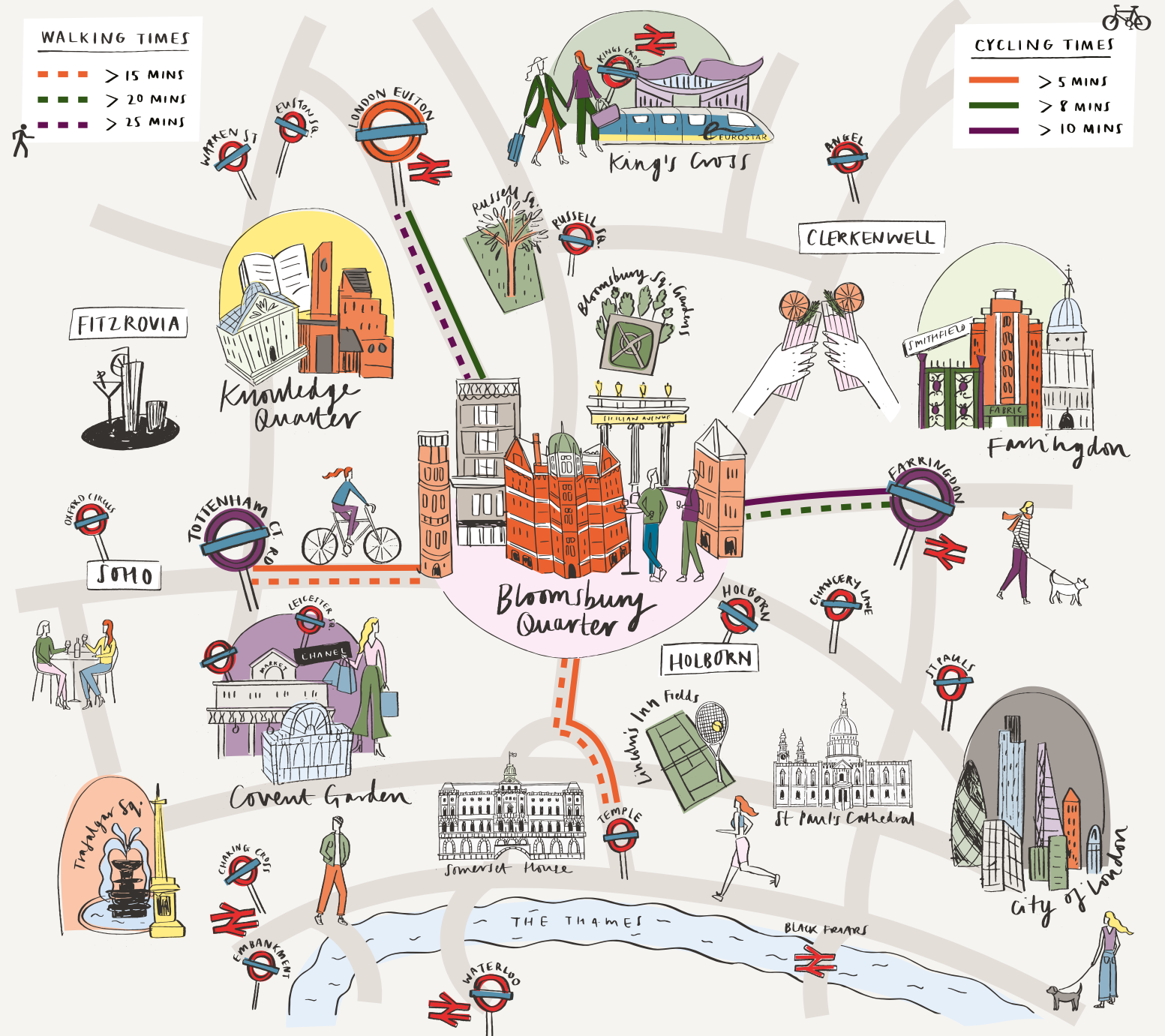
**From 396 to 6,259 sq ft  
of newly refurbished  
contemporary workspace,  
complemented by heritage  
architecture in Bloomsbury**

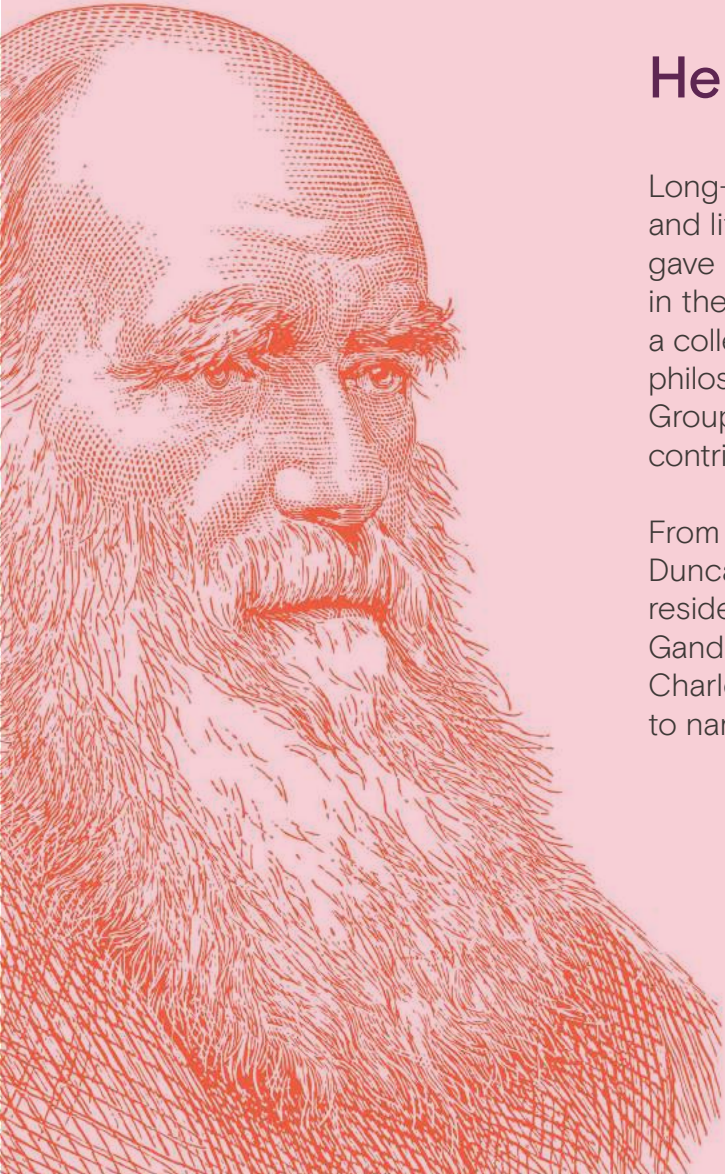
Set moments from Holborn Station, 18 Southampton Place offers a range of fully fitted floors.



# Bloomsbury Quarter. Where London meets.

A new quarter in the heart of London, for diversity, responsibility, and flexibility. A new destination for artisans, connoisseurs and foodies; for boutiques, offices and greenery. A vibrant neighbourhood, forged for tomorrow.





## Heritage & History

Long-associated as the intellectual and literary hub of London, Bloomsbury gave its name to the Bloomsbury Group in the early 20th century. Comprising a collection of writers, intellectuals, philosophers and artists, the Bloomsbury Group were renowned for their seminal contribution to London's modern culture.

From Vanessa Bell to Roger Fry and Duncan Grant, Bloomsbury's notable residents have also included Mathama Gandhi, Charles Darwin, Bob Marley, Charles Dickens and Ricky Gervais, to name a few.

HERITAGE  
HISTORY  
TAGS



An aerial photograph of a city street scene. A large, multi-story building with a green tint is highlighted in the center. A circular logo with the text 'SOUTHAMPTON 18 PLACE' is overlaid on the building. The surrounding area includes other buildings, trees, and a street with cars and pedestrians.

SOUTHAMPTON  
18  
PLACE





## Schedule of Areas

Proposed	Condition	Office sq. ft	Office sq. m
4	Fitted	314	29.2
3	Fitted	1,248	115.9
2	Fitted	1,381	128.4
1	Fitted	1,347	125.1
G	Fitted	1,573	146.2
LG	Fitted	396	36.7
<b>Total</b>		<b>6,259</b>	<b>581.5</b>



## Ground Floor

1,573 sq ft  
146.2 sq m

### Fitted

- 17 x Desks
- 2 x Meeting Rooms (12 & 8p)
- 1 x Informal Touchdown
- 1 x Comms Room
- 1 x WC
- 1 x Bike Storage



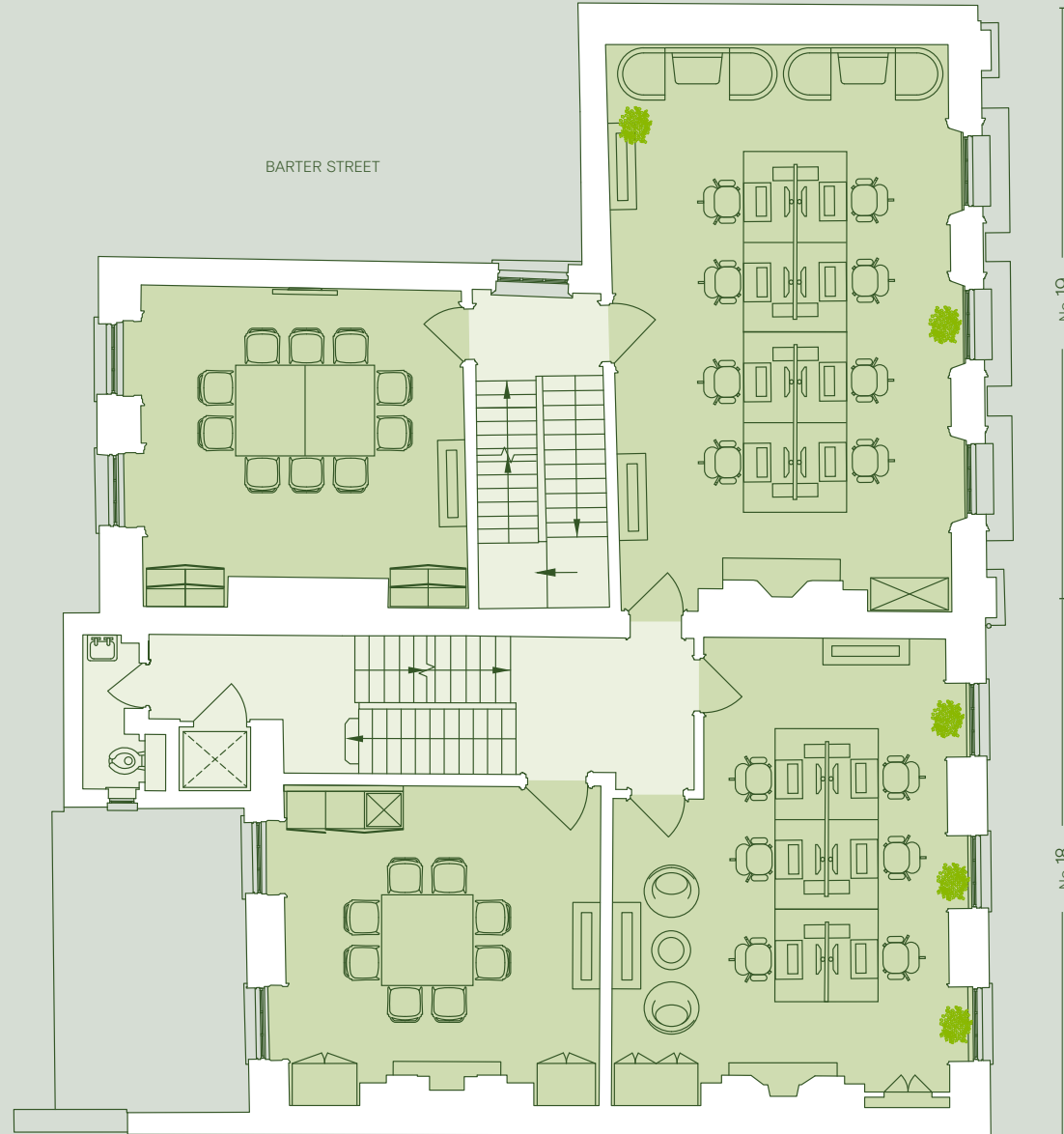


## First Floor

1,347 sq ft  
125.1 sq m

### Fitted

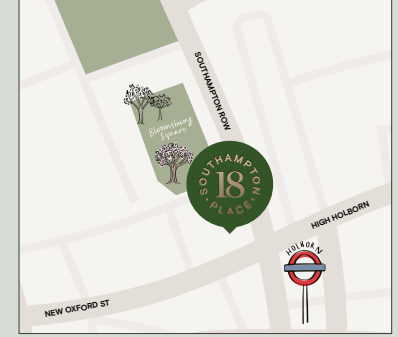
- 14 x Desks
- 2 x Meeting rooms (10 & 8p)
- 3 x Dry kitchens
- 3 x Informal touchdowns



No. 19

No. 18

SOUTHAMPTON PLACE



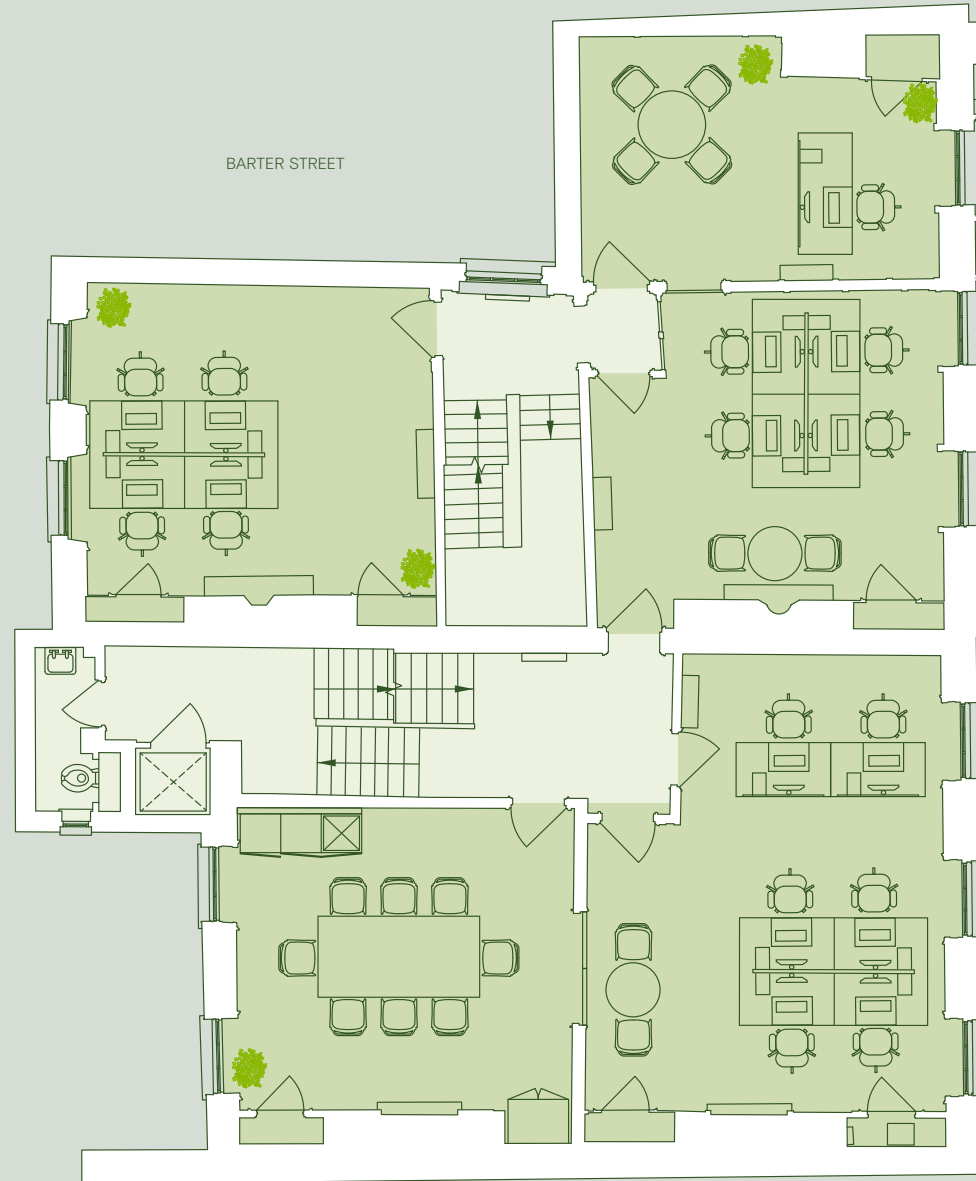
# 2

## Second Floor

1,381 sq ft  
128.4 sq m

### Fitted

- 12 x Desks
- 1 x Office
- 2 x Meeting rooms (8p)
- 1 x Dry kitchen
- 2 x Informal landings
- 1 x WC



BARTER STREET

No. 19

SOUTHAMPTON PLACE

No. 18



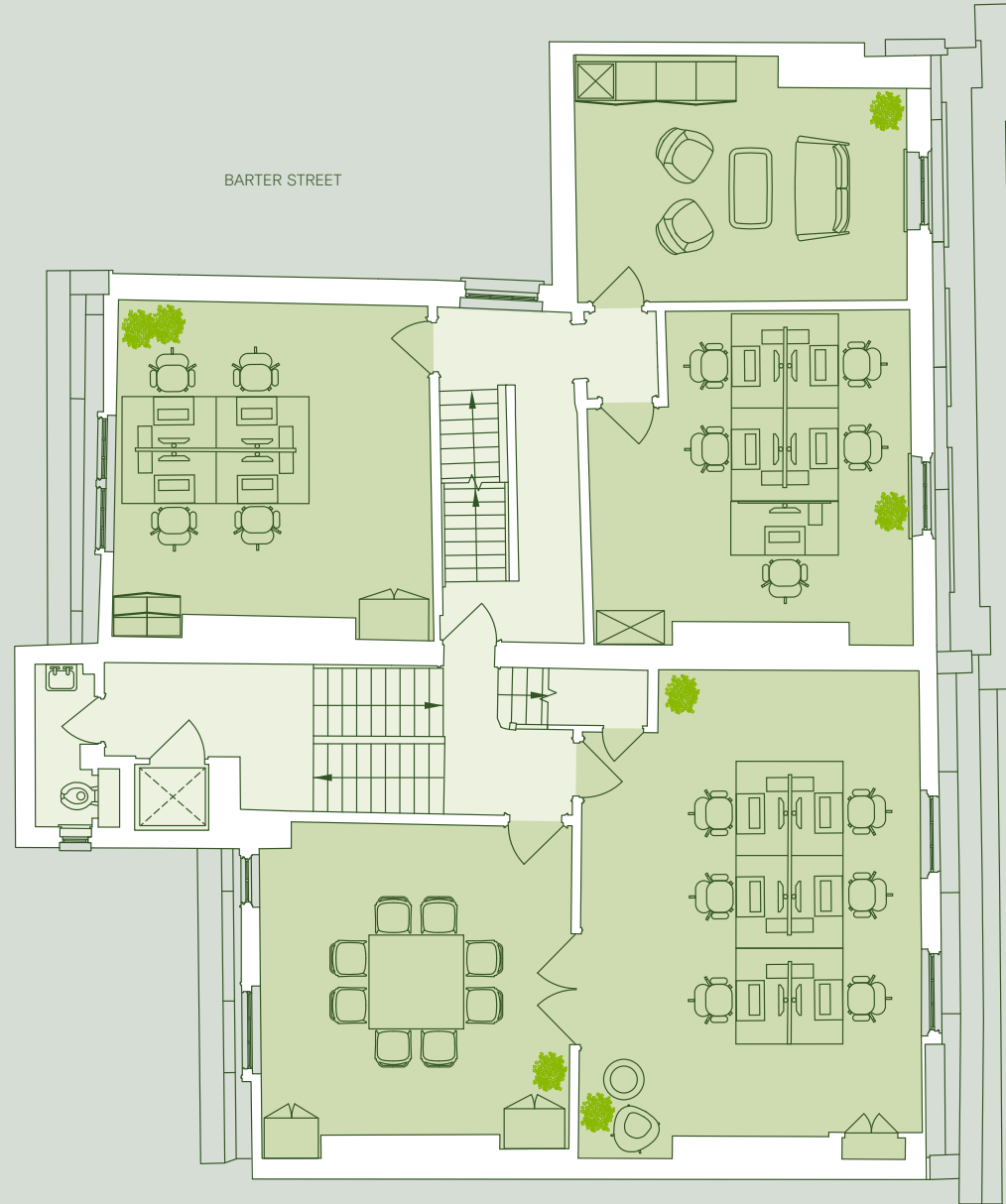
# 3

## Third Floor

1,248 sq ft  
115.9 sq m

### Fitted

- 1 x Meeting room (8p)
- 15 x Desks
- 1 x Kitchen and breakout
- 1 x WC



No 19

No 18

SOUTHAMPTON PLACE



# 4

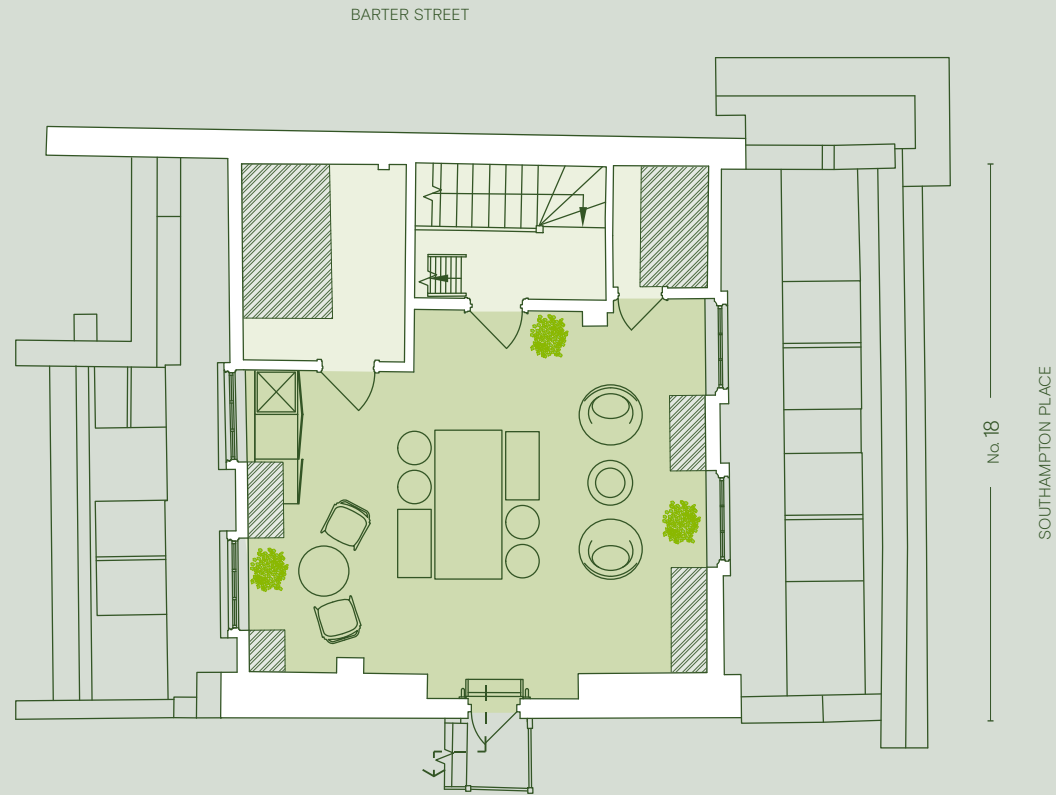
## Fourth Floor

314 sq ft  
29.2 sq m

### Fitted

—

- 1 x Informal meeting space
- 1 x Plant room (existing)
- 1 x Dry kitchen





View of the First Floor

Photography of fit out



# LG

## Lower Ground Floor

396 sq ft

36.7 sq m

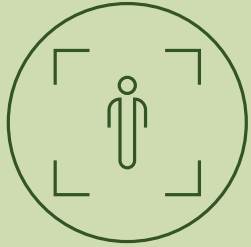
### Fitted

- 1 x Male WC with showers
- 1 x Female WC with showers
- 1 x Kitchen and breakout
- 1 x Comms Room
- 5 x Desks
- 1 x Meeting Room (5p)



The end of trip facilities





Occupancy ratio - 1:10



Targeting EPC B



Kitchen facilities



Audio entry system



Passenger lift



LED lighting



Period features



CAT A+ fit out



Comprehensive refurbishment



Heating & cooling VRV system



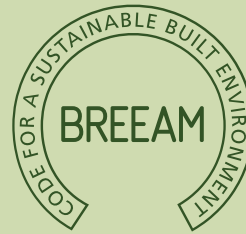
Shower facilities and lockers





ENVIRONMENTAL • SOCIAL • GOVERNANCE

We are committed to achieving the highest sustainability standards possible across the Bloomsbury Quarter estate



Targeting 'Very Good'



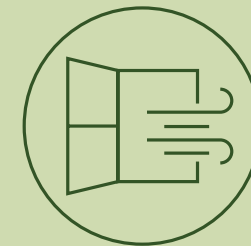
Collaborating with the Central District Alliance



Targeting 2\* minimum



All electric scheme (no fossil fuels)



Natural ventilation (openable windows)



Estate wide greening strategy

# YOUR CHOICE ZEEGHOOR

SICILIAN AVENUE

STMS  
Food Group



The University of London

GODDGE STREET

TOTTENHAM COURT RD.

Russell Square

SOUTHAMPTON ROW

GUILDFORD ST.

GRANT INN RD.

The British Museum

Bloomsbury Square

Bloomsbury Quarter

THE LAMB

Lamb's Conduit Street

THEOBALDS RD.

BOROUGH OF HOLBORN  
LEATHER LANE  
E.C.1.

Leather Lane Market

TOTTENHAM COURT RD.

Bloomsbury Street Kitchen

Rosewood Hotel

The Hoxton

HOLBORN

HIGH HOLBORN

CHANCERY LANE

Seven Dials

SHAFTESBURY AVE.

SHAFTESBURY

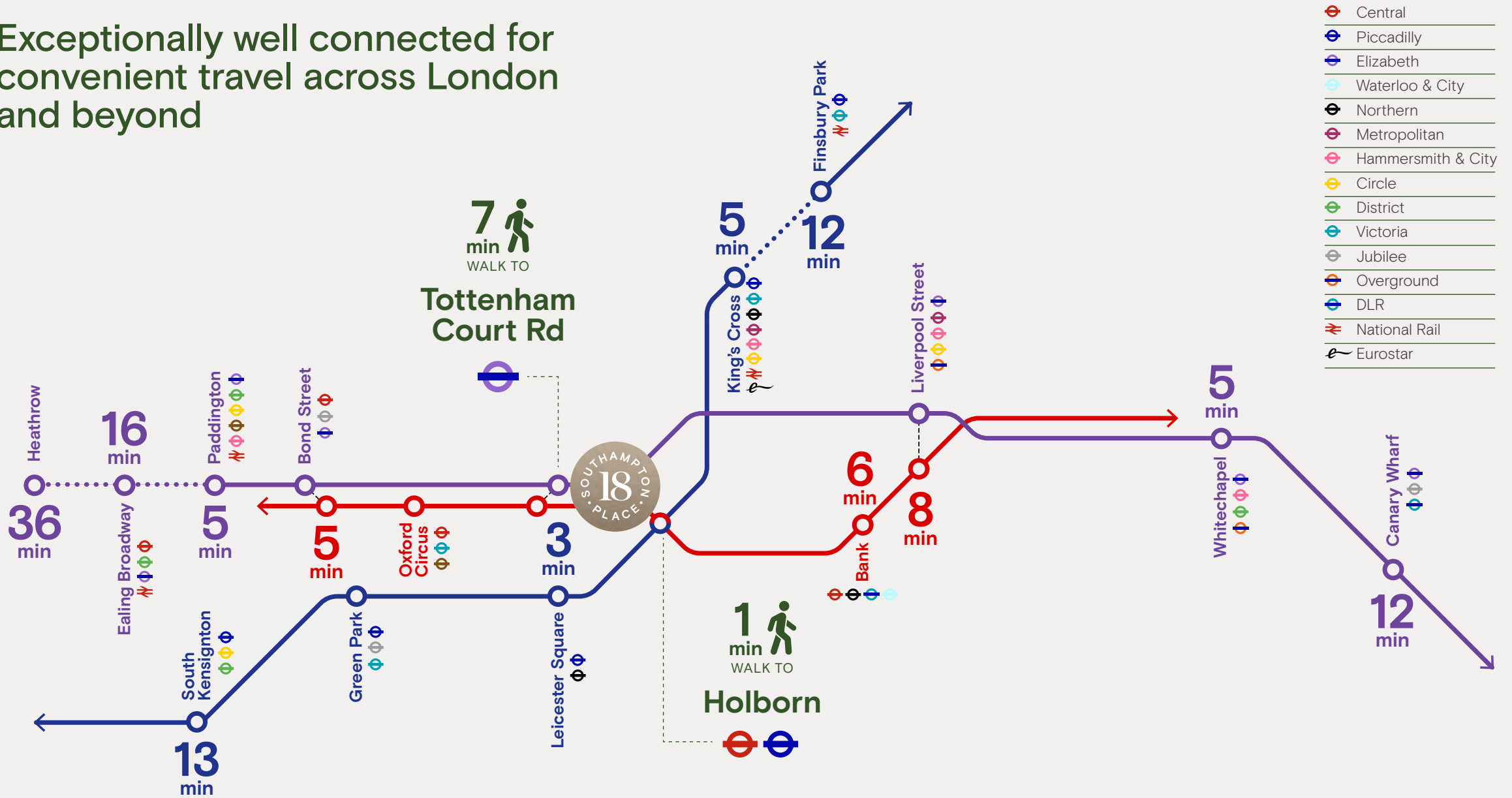
ADMIT ONE

Lincoln's Inn Fields

London School of Economics

FLEET STREET E.C.4

Exceptionally well connected for convenient travel across London and beyond



Royal Opera House

# ART & CULTURE



British Museum

GREATER LONDON COUNCIL  
Virginia  
Stephen  
(VIRGINIA WOOLF)  
1882 - 1941  
Novelist and Critic  
lived here  
1907-1911

## Where heritage meets contemporary

Whether it's a trip to the British Museum, an evening at the Top Secret Comedy Club or a talk at the University of London, 18 Southampton Place sits in a location surrounded by art and culture.

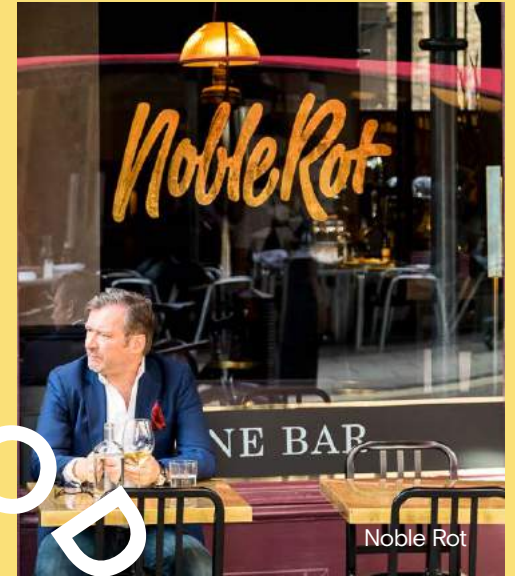


Sir John Soane's Museum





Where fine dining meets street food, coffee meets cocktails and day meets night. A vibrant workstyle for morning meetings, post-work drinks and everything in-between.



# 50

# FOOD & DRINK



More than 50 bars, restaurants & cafés within a 10 minute walk





# GREEN SPACES

8  
Green Spaces

As Charles Dickens once said, “the parks be the lungs of London”, and at 18 Southampton Place, you’ll benefit from 8 publicly accessible green spaces within a 10 minute walk – including Bloomsbury Square, right on your doorstep.

# Where culture meets community

From rest and relaxation at The Hoxton and Rosewood hotels, to retail therapy along Sicilian Avenue and Lamb's Conduit Street, Bloomsbury is truly a 24/7 destination.

RETAIL.  
&  
REST.



Lamb's Conduit Street



Lamb's Conduit Street



Neal's Yard



**Elizabeth Galbraith**

M: 07966 247607

T: 020 8187 8704

elizabeth.galbraith@knightfrank.com

**Jonny Lee**

M: 07885 389426

T: 020 7861 1541

jonny.lee@knightfrank.com

**Serena Harwood**

M: 07790 344116

T: 020 3967 7184

serena.harwood@knightfrank.com

## BLUEBOOK

**Chris Watkin**

M: 07730 066523

T: 020 7167 6402

chris@bluebooklondon.co.uk

**Robbie Rowan**

M: 07973 267435

T: 020 7167 6407

robbie@bluebooklondon.co.uk

**Oliver Pardoe**

M: 07748 626103

T: 020 7167 6410

ollie@bluebooklondon.co.uk

**Anders Horwood**

M: 07969 321222

T: 020 7167 6409

anders@bluebooklondon.co.uk