

Office / Lab for Sublease

1260 - 1280 Teron Road



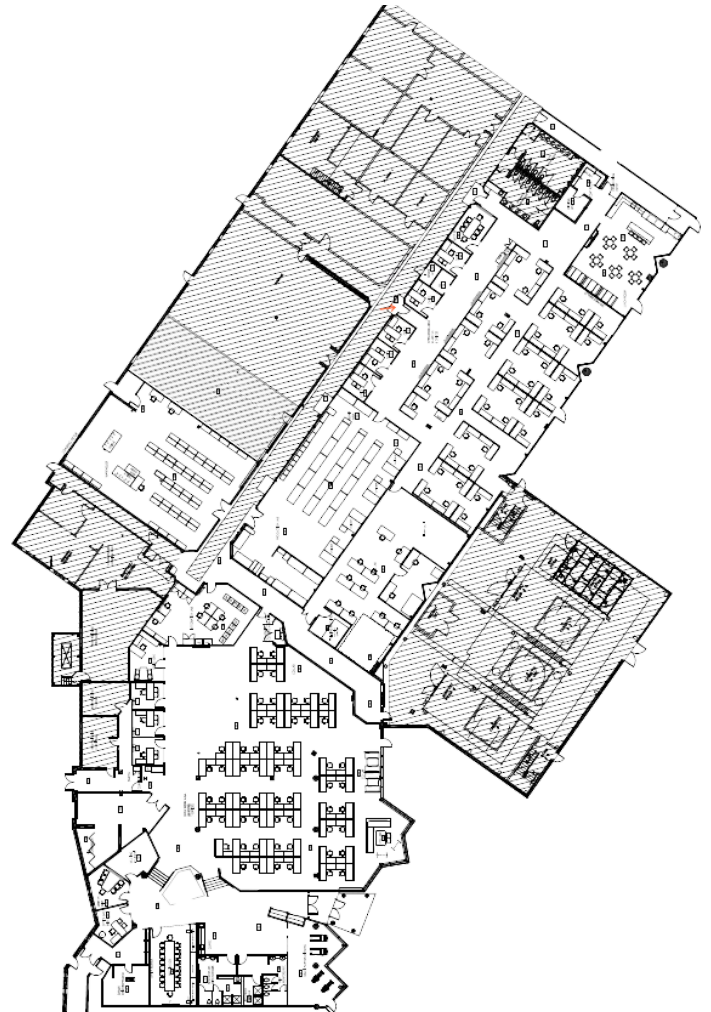
Space **Highlights:**

Size:	33,764 SF 1 st Floor
Availability:	January 2026
Expiry:	February 28, 2030
Net Rent:	Contact Listing Agent
Additional Rent:	\$18.22 PSF (2025 est)

Premium flex office space with plenty of open collaboration areas.

- **Layout:**
 - 10 private offices
 - 20 person boardroom
 - 3 meeting rooms
 - 3 labs
 - Server room
 - In-Suite Showers
 - Large Kitchen / Lunchroom
 - Warehouse component (grade level loading)

Floor Plan



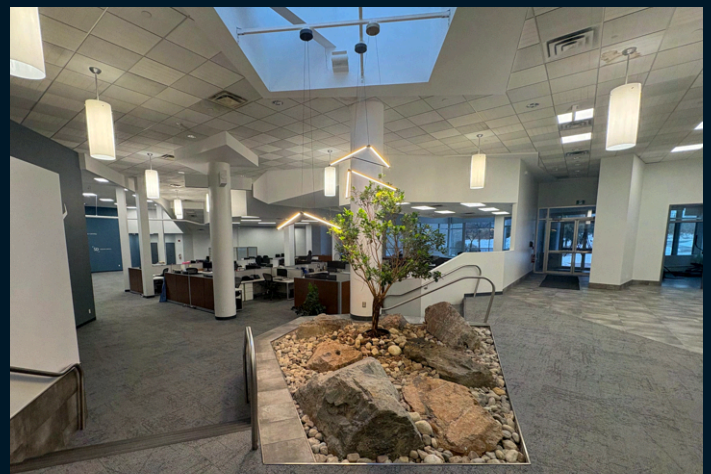
ADDRESS
1260 -1280 Teron Road



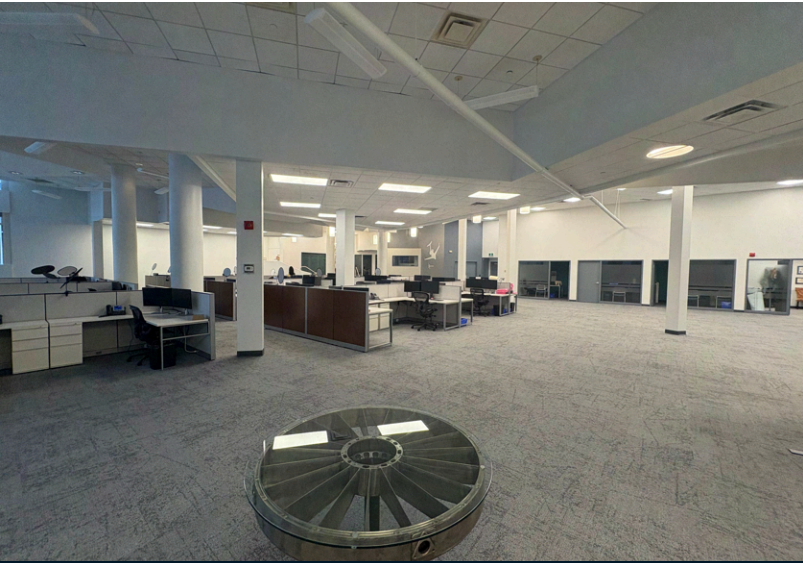
3/1,000 SF
On-site Surface Parking

Property **Highlights:**

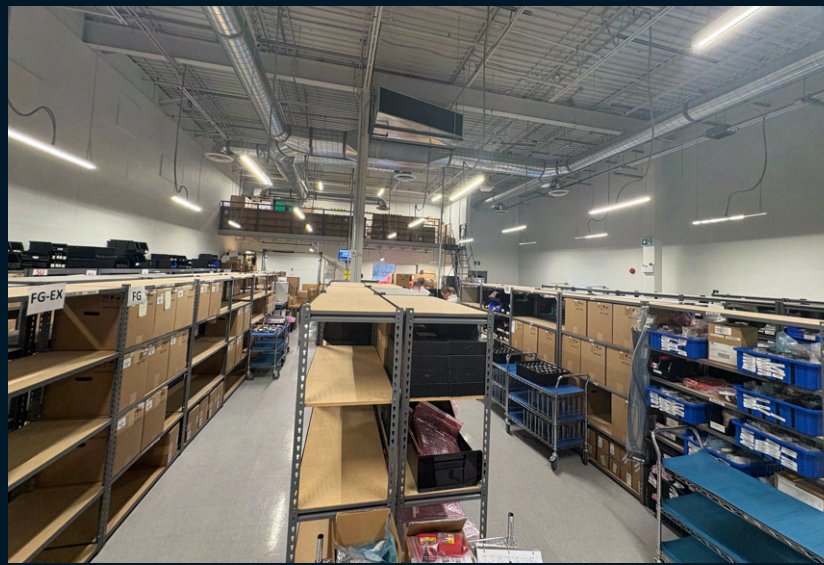
1260 - 1280 Teron Road is located on the north side of Teron Road between Carling Avenue and March Road in a mixed commercial and industrial sector of Kanata North. The property consists for the most part of a single storey multi-tenant complex



Office Photos



Lab/Warehouse Photos





Contacts

Steven Powell

Vice President

Steven.Powell@jll.com

C: 613-656-0150

Philippe Erdmann

Sales Associate

Philippe.Erdmann@jll.com

C: 613-400-6173

Jones Lang LaSalle Brokerage, Inc.