

# 350 BRANNAN San Francisco

Heart of SOMA near South Park

CREATIVE OFFICE SPACES  
FOR LEASE

±1,250 – 2,722 RSF

Creative Spaces

Steps from South Park

High Public Transportation Area

Amenity Rich Location

EXCLUSIVELY REPRESENTED BY:

BRADLEY L. COLTON

(415) 834-1600

bcolton@coltoncommercialsf.com

License #: 00805116

BRYAN B. COLTON

bryancolton@coltoncommercialsf.com

(415) 595-6959

License #: 02111407

TORI DECOITE

(415) 590-7874

tdecoite@coltoncommercialsf.com

License #: 02042753

WELLINGTON CHANG

(415) 418-0932

wchang@coltoncommercialsf.com

License #: 02128739



# 350 BRANNAN San Francisco

Heart of SOMA near South Park

## SUITE 330:

1,472 RSF

Creative Office Space with open area

Two (2) conference rooms

Kitchenette

High exposed ceiling

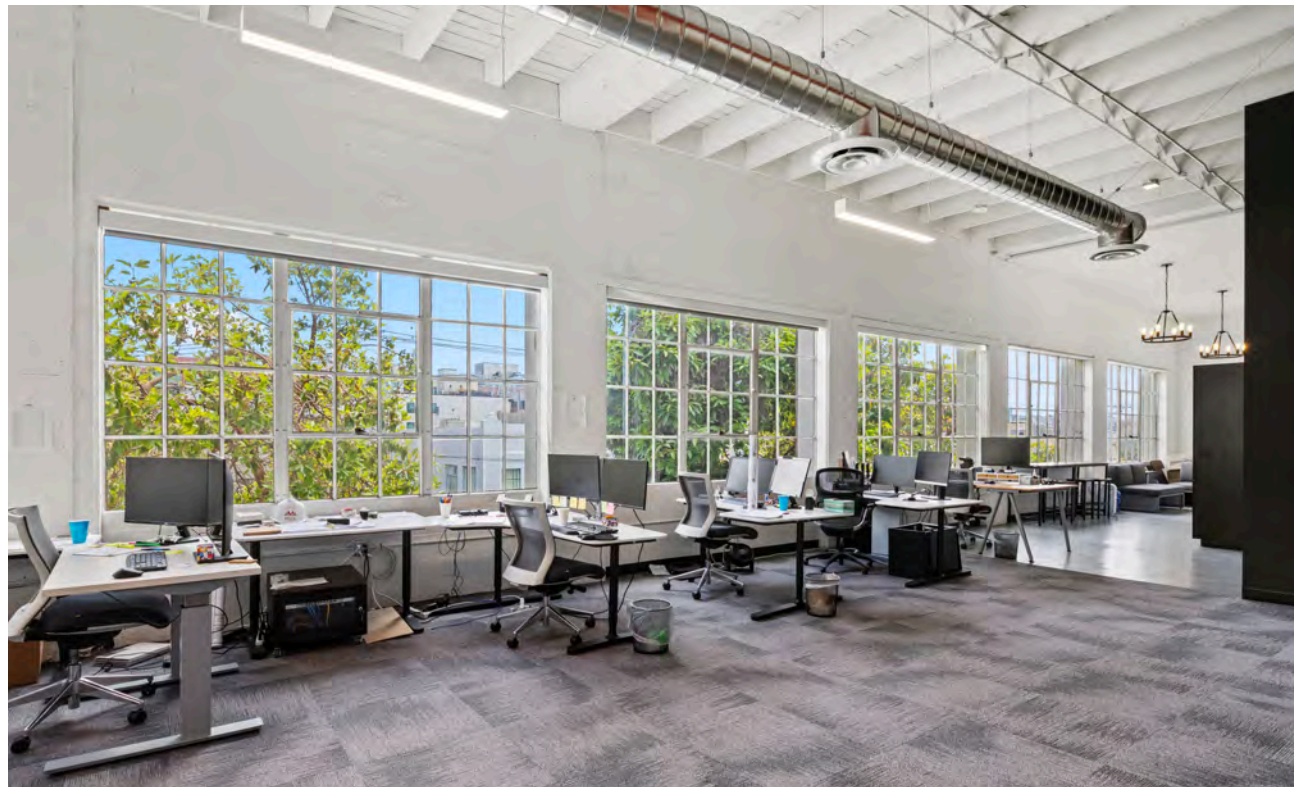
Excellent natural light

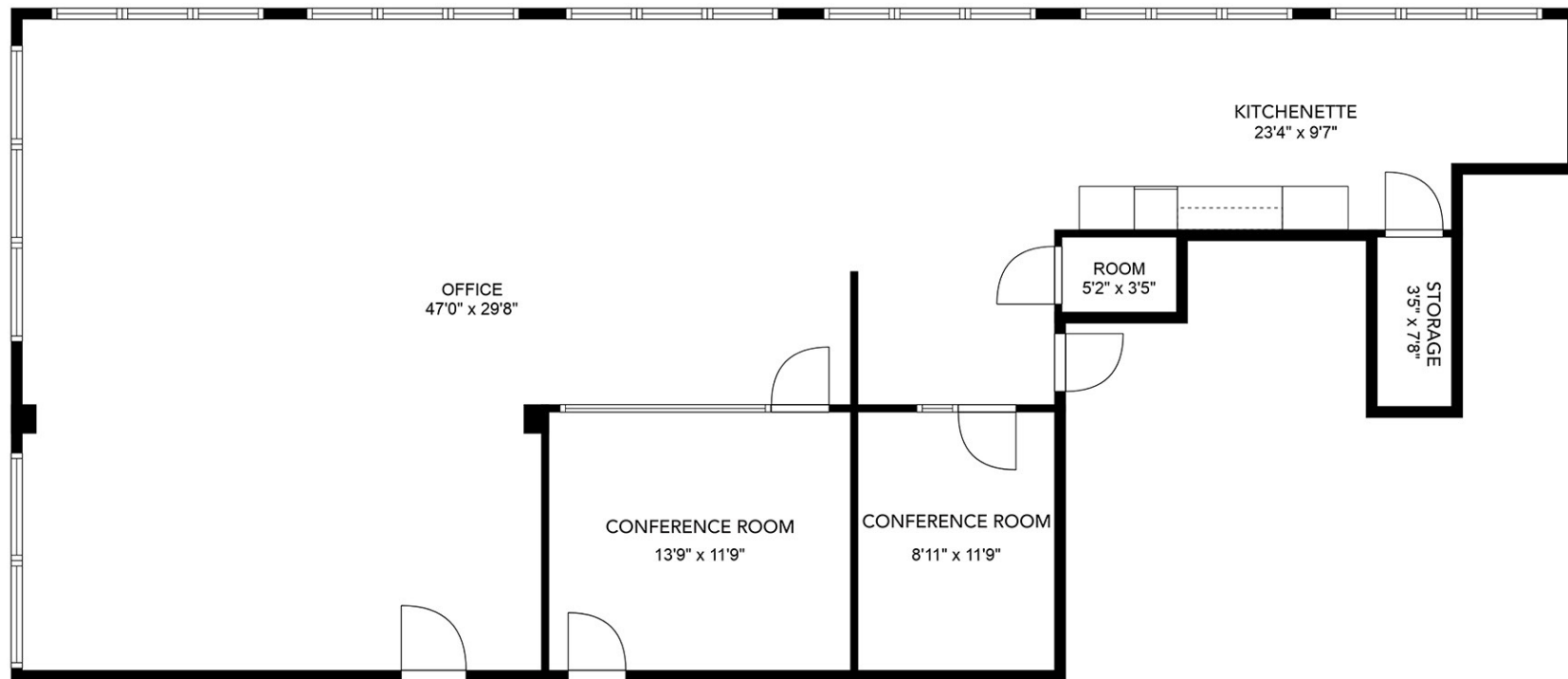
HVAC

Plug & Play

Available NOW

Can be combined with suite 325





# 350 BRANNAN San Francisco

Heart of SOMA near South Park

## SUITE 325:

1,500 RSF

Creative space with open area

Mezzanine with skylight

Shared Kitchen

8-9' High Ceilings

Available NOW

Can be combined with suite 330



# 350 BRANNAN San Francisco

Heart of SOMA near South Park

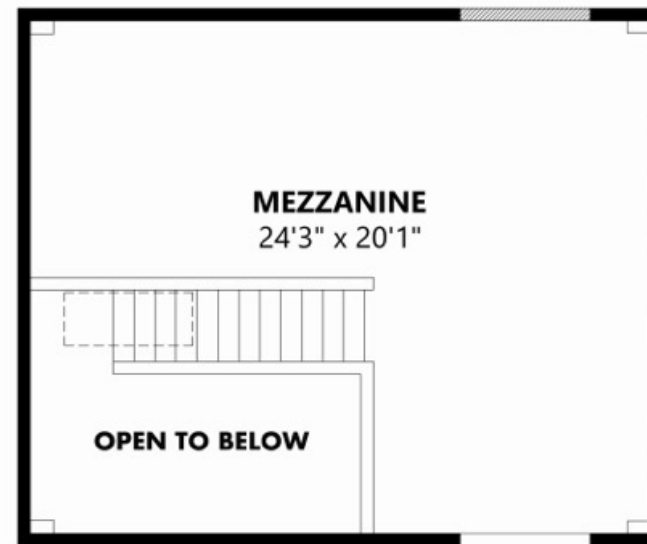
## SUITE 325 FLOOR PLAN

±1,500 RSF

Can be combined with suite 330 for 2,722 RSF



FLOOR 1



FLOOR 2



# 350 BRANNAN San Francisco

Heart of SOMA near South Park

 94 WALK SCORE  100 TRANSIT SCORE  0.2 MILES TO MUNI



## NEIGHBORHOOD MAP

### RECREATION & PARKS



### TRANSPORTATION



### RESTAURANTS & CAFES

- 1 Golden Goat Coffee
- 2 JAX Vineyards
- 3 Flour & Branch
- 4 Garaje
- 5 Caffe Centro SP
- 6 Blue Bottle Coffee
- 7 21st Amendment Brewery & Restaurant
- 8 SAJJ Mediterranean (SF SoMa)
- 9 ROOH SF
- 10 Mercado
- 11 Local Tap
- 12 MoMo's
- 13 Saison
- 14 Alchemist Bar & Lounge
- 15 Local Tap
- 16 Sun and Moon
- 17 Brickhouse Cafe & Bar
- 18 Mestiza
- 19 ROOFTOP 25

SOUTH  
PARK

# 350 BRANNAN San Francisco

Heart of SOMA near South Park

PLEASE CONTACT FOR MORE  
INFORMATION:

**BRADLEY L. COLTON**

(415) 834-1600

[bcolton@coltoncommercialsf.com](mailto:bcolton@coltoncommercialsf.com)

License #: 00805116

**BRYAN B. COLTON**

[bryancolton@coltoncommercialsf.com](mailto:bryancolton@coltoncommercialsf.com)

(415) 595-6959

License #: 02111407

**TORI DECOITE**

(415) 590-7874

[tdecoite@coltoncommercialsf.com](mailto:tdecoite@coltoncommercialsf.com)

License #: 02042753

**WELLINGTON CHANG**

(415) 418-0932

[wchang@coltoncommercialsf.com](mailto:wchang@coltoncommercialsf.com)

License #: 02128739



The foregoing is based upon information provided by others which we believe is accurate, however, no guarantee, warranty or representation is made. We recommend that all interested parties independently verify its accuracy and completeness. As well, any projections, assumptions, opinions, or estimates are used for example only and do not represent the current or future performance of the identified property. Your tax, financial, legal and toxic substance advisors should conduct a careful independent investigation of the property and its suitability for your needs, including land use limitations. The property is subject to prior lease, sale, change in price, or withdrawal from the market without notice.