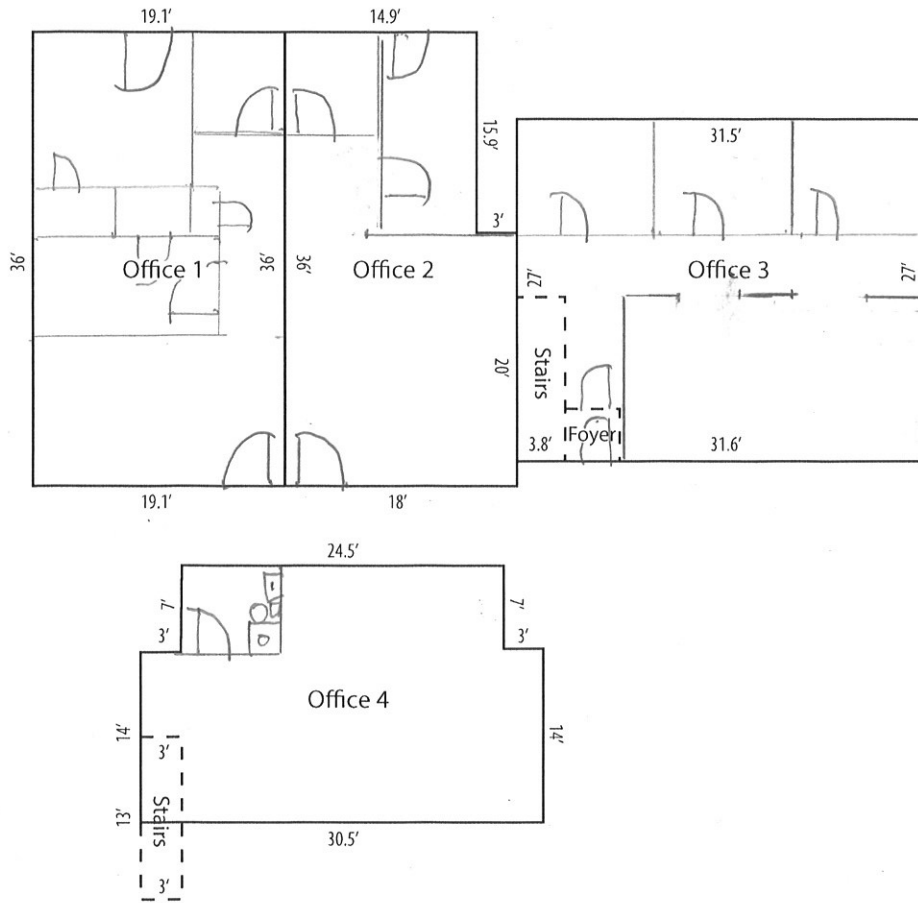


121 CLAY DRIVE, QUEENSTOWN, MARYLAND



\*All dimensions are approximate

First Level:		Second Level:	
Office #1:	688 sq ft	Office #4:	600 sq ft
#2:	598 sq ft		
#3:	800 sq ft		

Total Square Footage: 2,686 sq ft

First Level:	2,086 sq ft
Second Level:	600 sq ft