



**Centenary**Link  
INDUSTRIAL ESTATE

**TO LET**

Trafford Park, Manchester, M17 1EB

Warehouse / Industrial Units  
from 10,010 – 66,583 sq ft



**Centenary Link is a high quality, comprehensively refurbished industrial estate in the heart of Trafford Park, the North West's premier employment area.**



**CentenaryLink**  
INDUSTRIAL ESTATE

# Description

Centenary Link has recently been comprehensively refurbished to provide high quality warehousing and industrial accommodation across 4 units with ability to be combined. The recently completed refurbishment programme means that all of the units benefit from the following features:



Steel Frame Construction



New over-sheeted profile metal roofs



New level access roller shutter doors



High quality office content



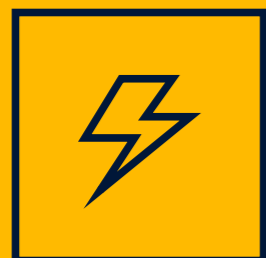
Generous parking



Electric automated security gate with intercom access



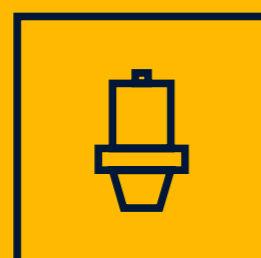
New LED Lighting



3 phase Electricity supply



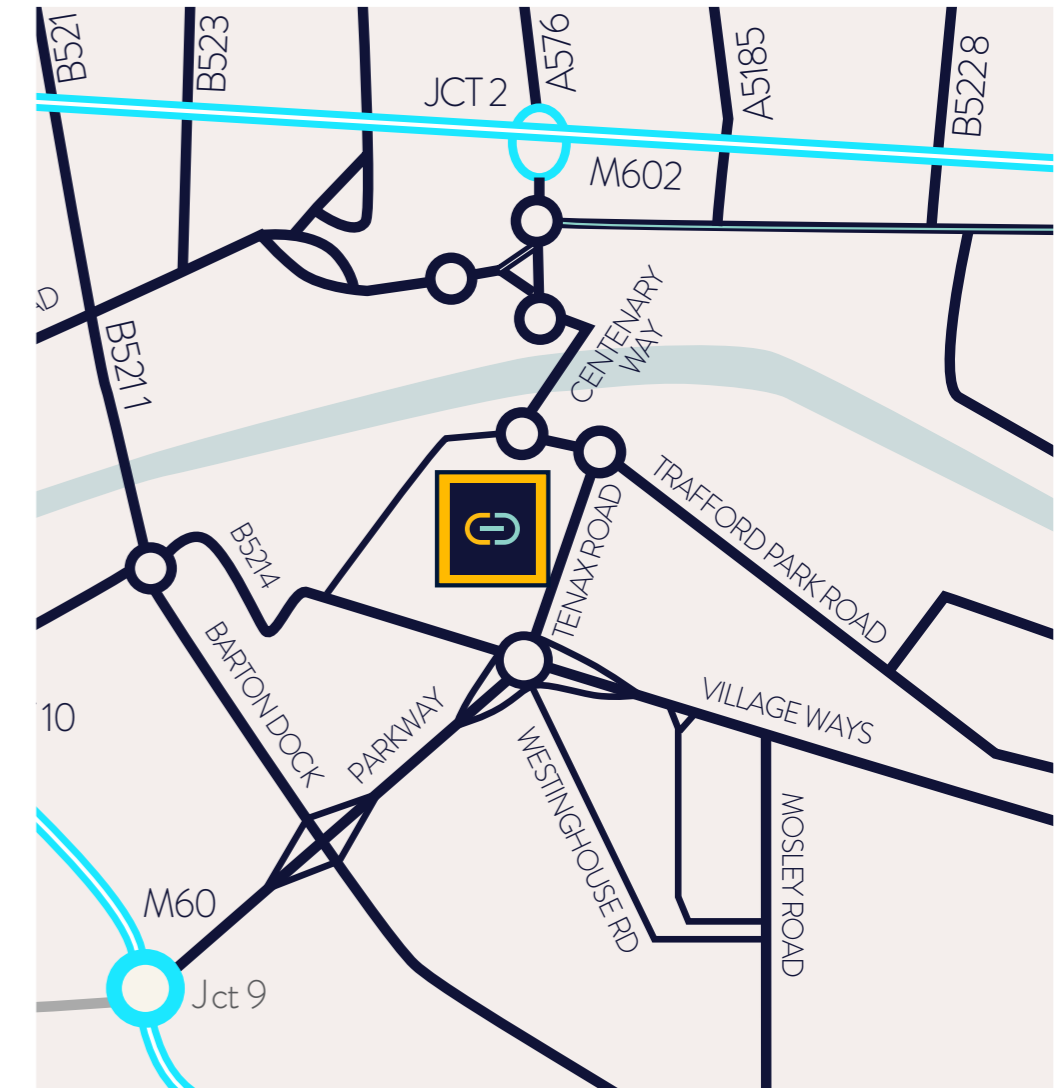
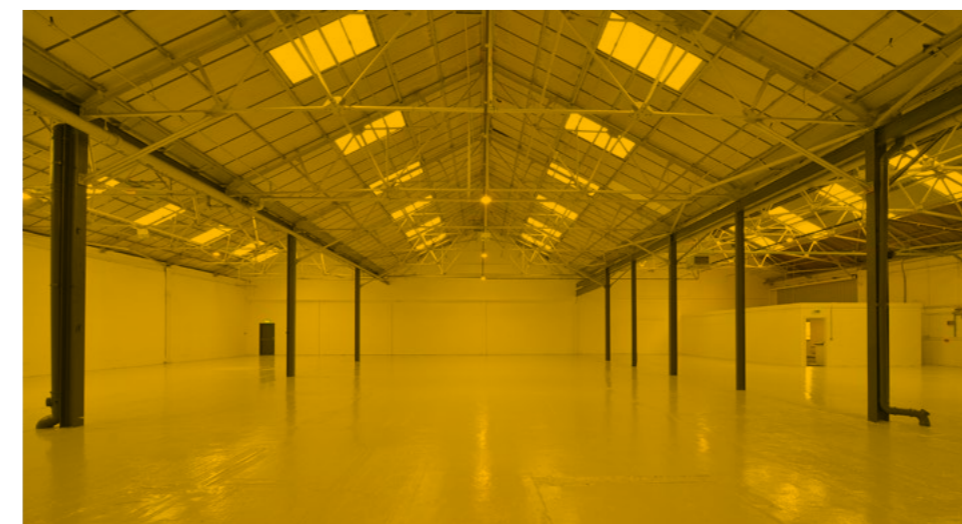
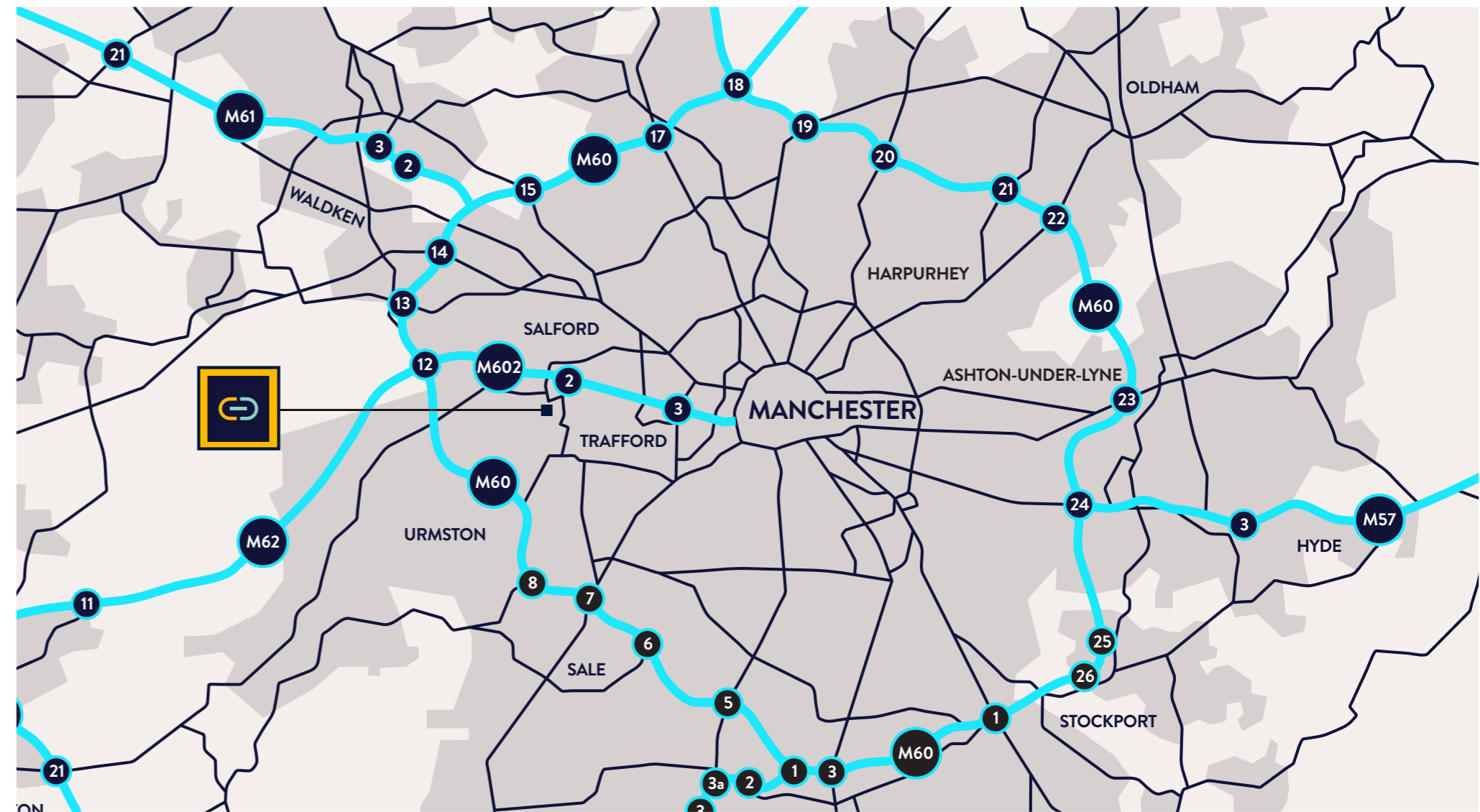
Painted warehouse floors



New WC's



Shared yard provision





**CentenaryLink**  
INDUSTRIAL ESTATE

# Trafford Park

Centenary Link is located within Trafford Park the North West's premier industrial estate and home to large mix of local, regional and national companies.

Manchester City Centre is only 4 miles away and is easily accessible via Chester Road (A56).

Trafford Park boasts:



Over 120,000 registered businesses located within a 30 minute drive time



Total population of 7.6 million people within a 60 minute drive.



Home to the largest inland freight terminal in the North West



Fantastic Transport Connections



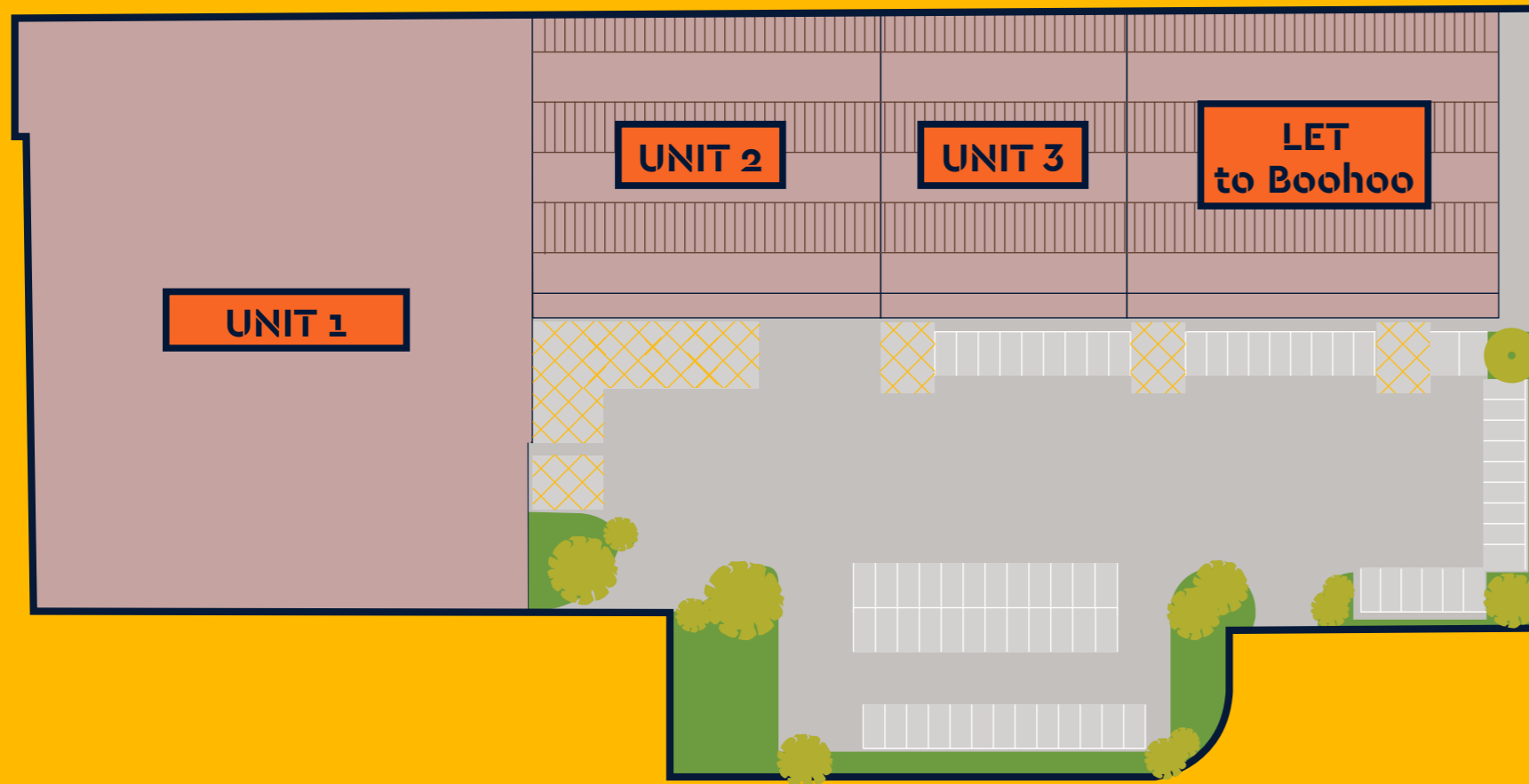
9 Million Sq M of Business Space



Recently completed metrolink to Manchester City Centre



**CentenaryLink**  
INDUSTRIAL ESTATE



# The Estate

Centenary Link is an industrial / warehouse estate situated in the heart of Trafford Park.

The estate is located on Centenary Way, approximately 1 mile from Junction 9 of the M60 Manchester motorway, forming the Manchester Outer Ring Road. Access to the M60 motorway from Centenary Way is via the A576 Tenax Road and then the A5081 Parkway.

Junction 2 of the M602 is within 1.5 miles of the estate and can be accessed directly via Centenary Way. Manchester City Centre lies approximately 4 miles to the east and can be reached via the recently completed metrolink with the nearest stop around 0.7 miles from the estate. Manchester airport is 10 miles to the south.

# Accommodation

The accommodation has been measured in accordance with the RIC Code of measuring Practice (6th edition) and has the following floor areas.

Unit 1	42,311 Sq Ft	3,931 Sq M	Available
Unit 2	14,262 Sq Ft	1,325 Sq M	Available
Unit 3	10,010 Sq Ft	930 Sq M	Available
Unit 4	-	-	Let to Boohoo

## Terms

The units are available by way of new Full Repairing and Insuring leases, for a term of years to be agreed.

## Rates

Business rates are payable at the prevailing rate, for further information contact Trafford Borough Council.

## Service Charge

Tenants will be responsible for paying an annual service charge for the upkeep of the estate.

## Contact

For further information or to arrange a viewing please contact the joint agents:



Anthony Mellor  
M 07794 757939  
E [anthony@b8re.com](mailto:anthony@b8re.com)

Will Kenyon  
M 07802 869 279  
E [will@b8re.com](mailto:will@b8re.com)

## EPC

Individual EPC reports have been prepared and are available upon request.

## Legal Fees

Each party shall be responsible for their own fees incurred in any transaction.

## VAT

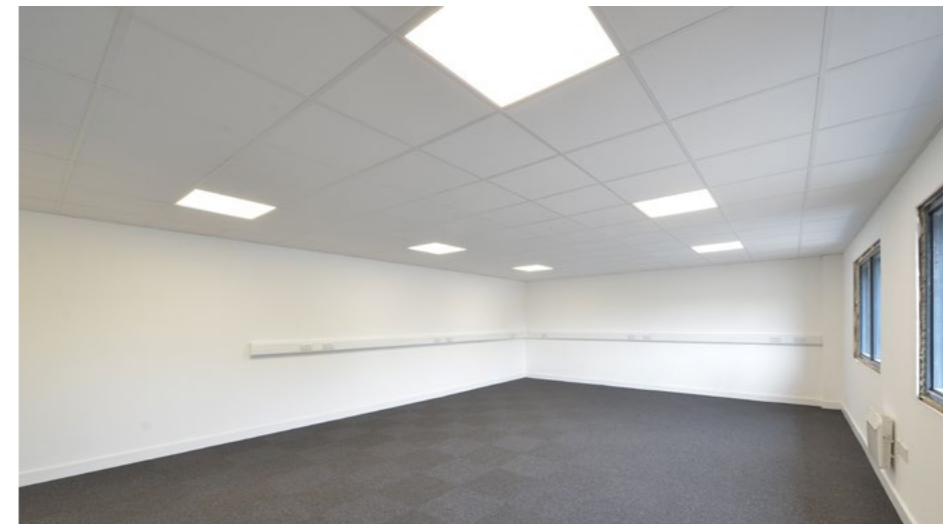
All figures quoted and subject to VAT at the prevailing rate.



Rob Tilley  
M 07973 622 837  
E [rob.tilley@knightfrank.com](mailto:rob.tilley@knightfrank.com)

Bradley Norton  
M 07870 393 145  
E [bradley.norton@knightfrank.com](mailto:bradley.norton@knightfrank.com)

# Warehouse / Industrial Units from 10,010 - 66,583 sq ft



GVA is the trading name of GVA Grimley Limited, conditions under which Particulars are issued GVA Grimley Limited for themselves, for any joint agents and for the vendors or lessors of this property whose agents they are, give notice that: i.) The particulars are set out as a general outline only for the guidance of intending purchasers or lessors and do not constitute, nor constitute part of, an offer or contract. ii.) All descriptions, dimensions, references to condition and necessary permission for use and occupation, and other details, are given in good faith and are believed to be correct but any intending purchasers or tenants should not rely on them as statements or representations of fact but satisfy themselves by inspection or otherwise as to the correctness of each of them. iii.) No person in the employment of GVA Grimley Limited or any joint agents has any authority to make or give any representation or warranty whatever in relation to this property. iv.) All rentals and prices are quoted exclusive of VAT.

Reproduced by courtesy of the Controller of HMSO. Crown Copyright reserved. Licence No 774359. If applicable, with consent of Chas E Good, Cartographers, Old Hatfield, Geographers A-Z Map Co Ltd and/or The Automobile Association. For identification purposes only. Designed and produced by Richard Barber & Co. 0161 833 0555. [www.richardbarber.co.uk](http://www.richardbarber.co.uk)