



For Lease

23,144 SF

INSTITUTIONALLY MANAGED | FLEXIBILITY TO GROW IN A PORTFOLIO | DELIVERING UNPRECEDENTED CUSTOMER SERVICE

12772 MONARCH STREET, GARDEN GROVE, CA

ORANGE COUNTY

FOR INFORMATION, CONTACT:

JEFF READ
t 949-608-2029
jeff.read@nrmk.com
CA RE Lic. #01040265

GREG OSBORNE
t 949-608-2076
greg.osborne@nrmk.com
CA RE Lic. #01310074

18401 Von Karman Avenue, Suite 150
Irvine, CA 92612
Corporate License #01355491

NEWMARK



**Rexford
Industrial**

Excellent West Orange County Manufacturing/Distribution Facility

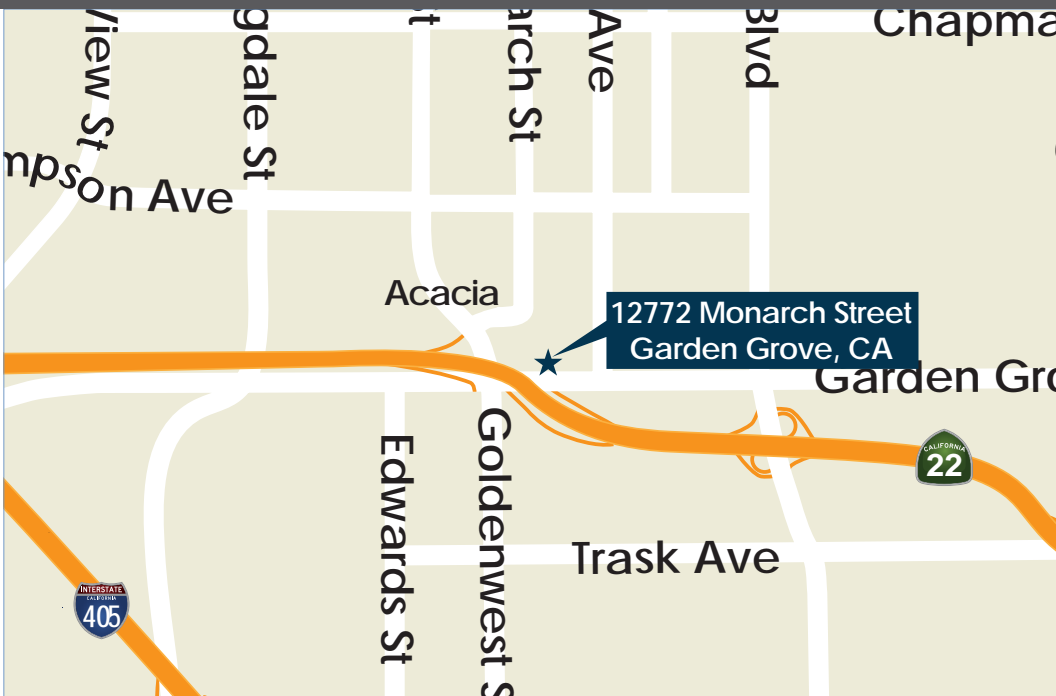
- Excellent West Orange County Manufacturing/Distribution Facility
- Approximately 1,623 SF of Renovated Office Area
- 21' Minimum Warehouse Ceiling Clearance
- Fully Fire Sprinklered
- One (1) Ground Level Loading Door
- Fully Fenced and Secured Site
- One (1) Interior Truckwell
- Approximate 1.0:1,000 S.F. Parking Ratio
- Shop Restrooms
- Power Capacity: 225 amps @ 277/480V (Tenant to verify)
- Excellent Garden Grove Location with immediate access to the Garden Grove (22) Freeway, providing convenient access throughout Orange County and easy access to Los Angeles County

For Lease

12772 MONARCH STREET, GARDEN GROVE, CA

23,144 SF

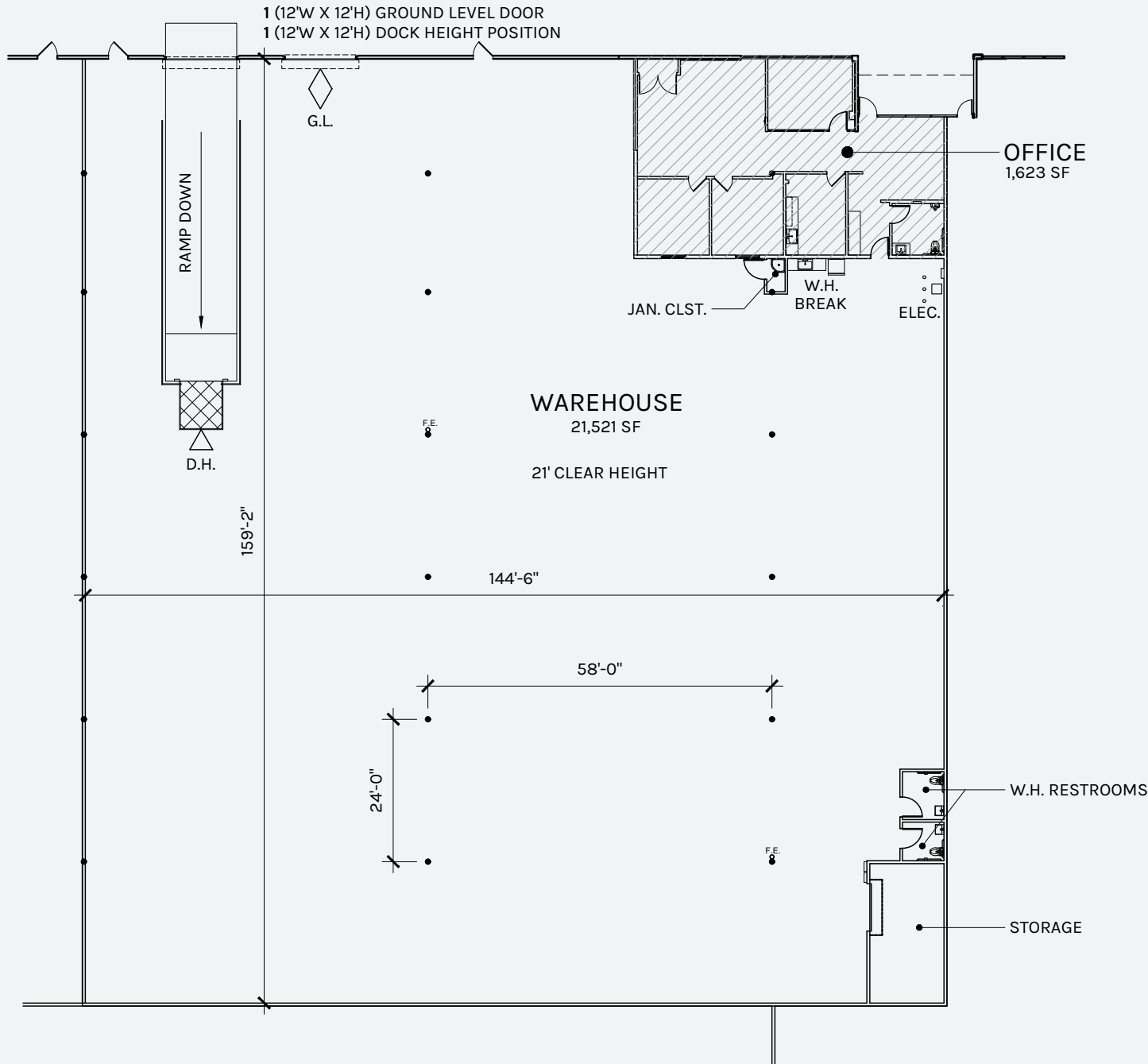
ORANGE COUNTY



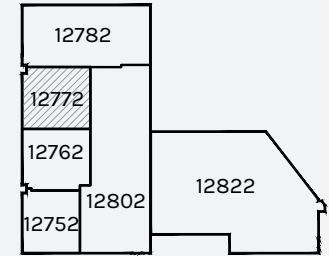


OVERALL FLOOR PLAN - 23,144 SF

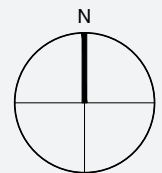
12772 MONARCH STREET



KEY PLAN



WAREHOUSE: 21,521 SF
OFFICE: 1,623 SF
TOTAL: 23,144 SF



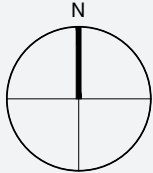
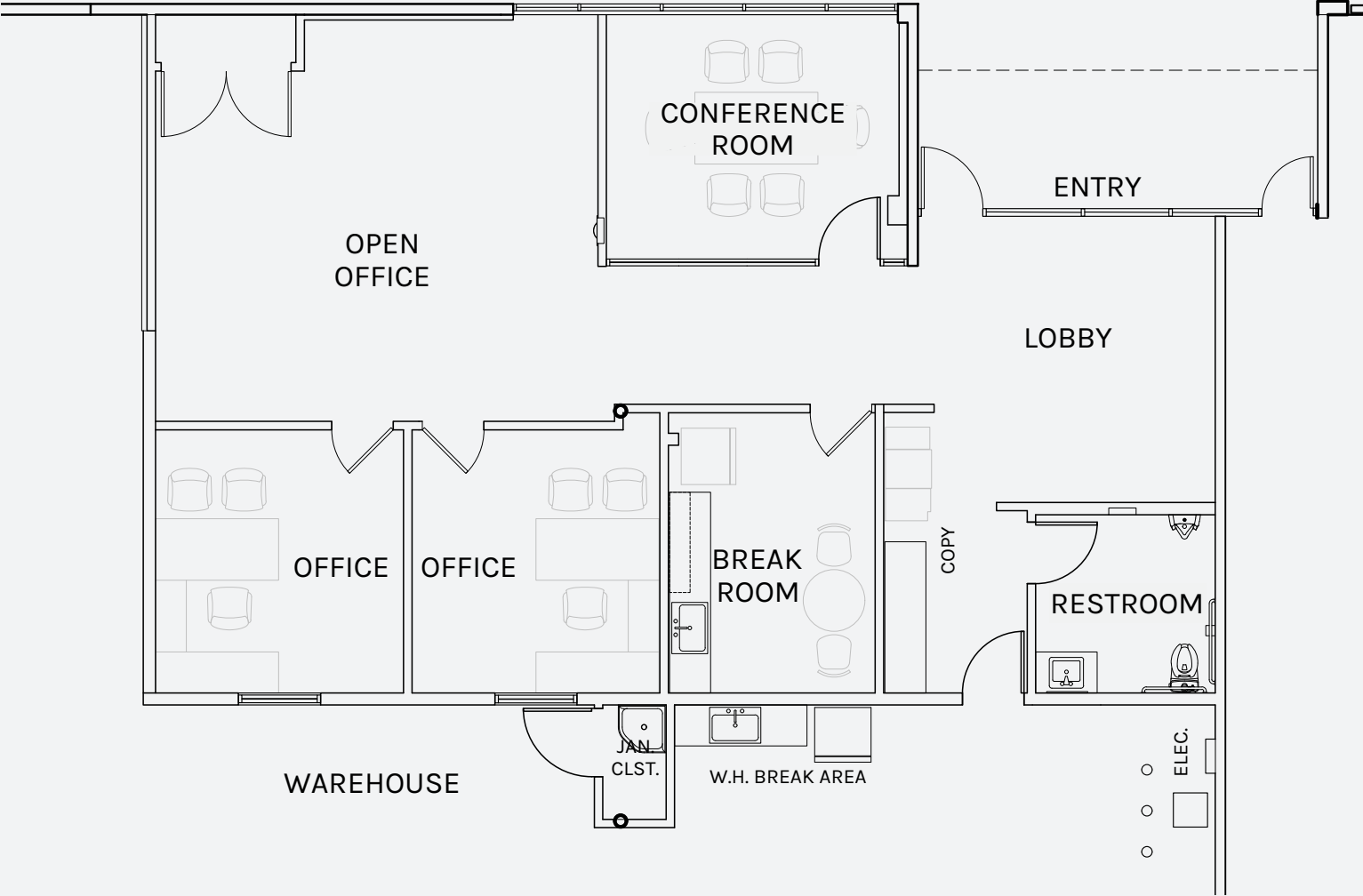
SCALE: 1" = 30'-0"

OFFICE PLAN - 1,623 SF

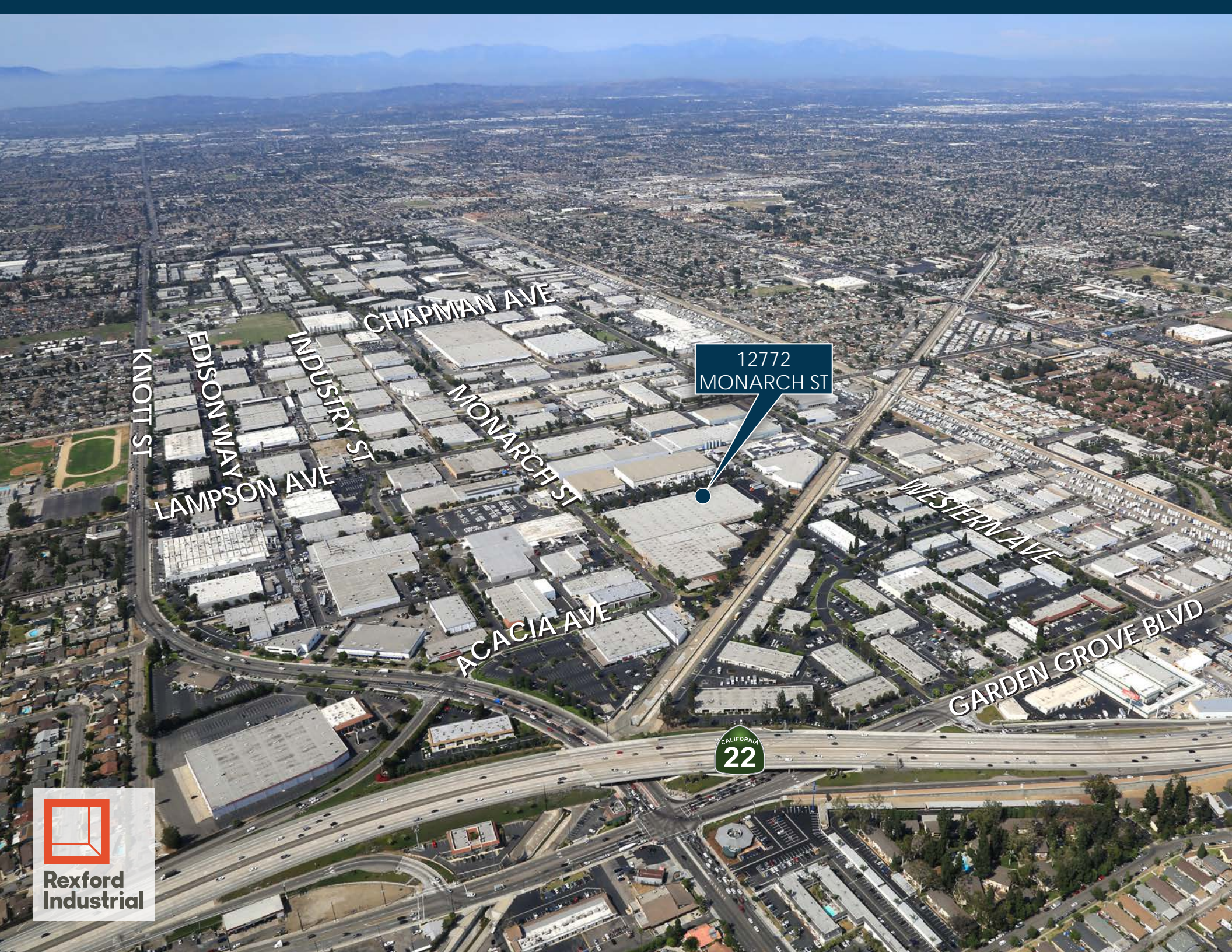
12772 MONARCH STREET



WAREHOUSE: 21,521 SF
OFFICE: 1,623 SF
TOTAL: 23,144 SF



SCALE: 1" = 10'-0"



12772
MONARCH ST

KNOTT ST

EDISON WAY

LAMPSON AVE

INDUSTRY ST

CHAPMAN AVE

MONARCH ST

ACACIA AVE

WESTERN AVE

GARDEN GROVE BLVD

CALIFORNIA
22

