

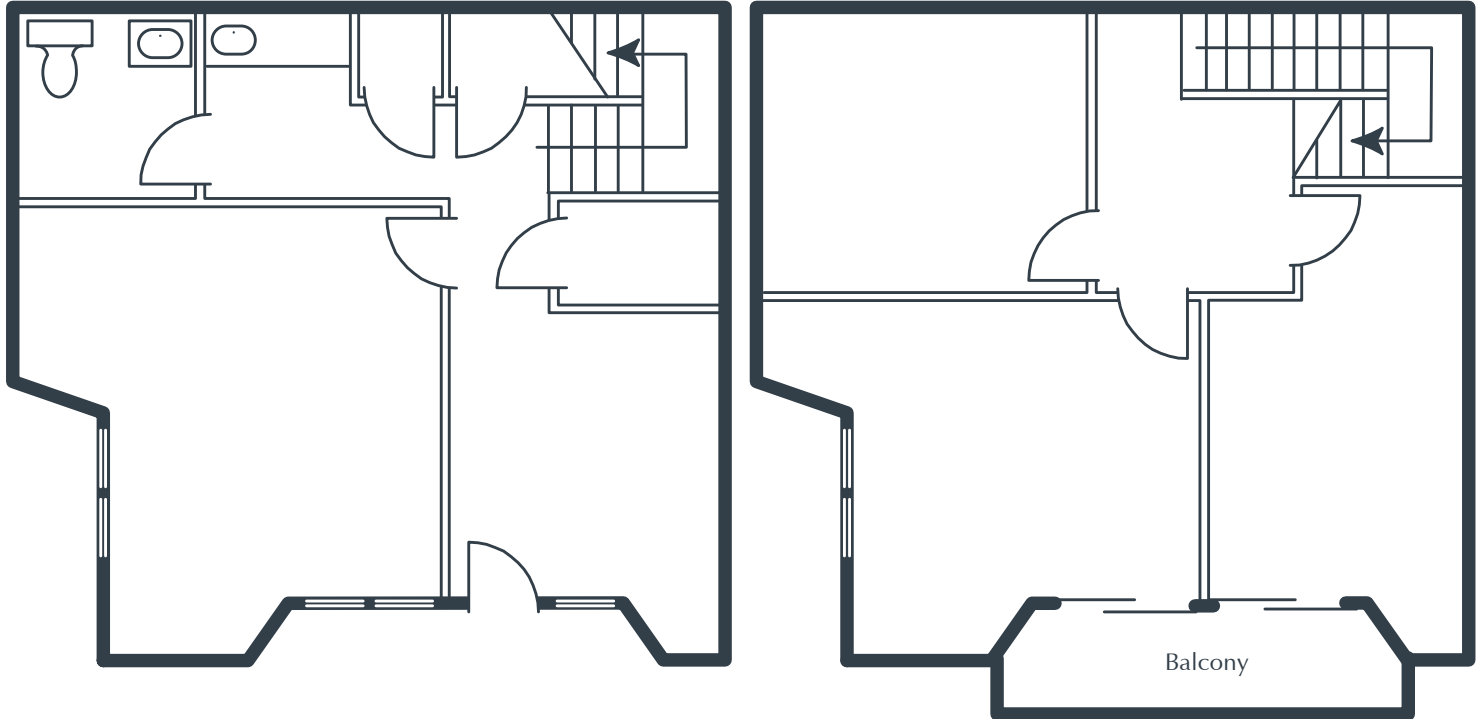
NEWPORT FREEWAY BUSINESS PARK

3176 Pullman Street, Suite 124
Costa Mesa, CA

1,330 Square Feet

\$1.45 SF/MO

Triple Net



NOTES

- Reception
- 3 Window Offices
- Interior Office
- Restroom
- Coffee Bar
- 3 Storage Closets
- Part of a Professionally Managed Business Park

Created by Olen Commercial Realty Corp., 2022.
Information is not to be published or copied without
written approval. Square footage and floor plans are
estimates and should be separately verified. All rates,
terms, floor plans, and building facts are subject to
change without notice.

ea 04.01.2026

LAURA PRESTON-FAYERMAN

Senior Leasing Director

949.719.7205

lfayerman@olen.com



Seven Corporate Plaza

Newport Beach, CA

949.644.6536

www.olen.com