

OFFICE SPACE FOR LEASE IN MISSION INDUSTRIAL PARK



976 DUGALD ROAD

WINNIPEG, MB



CONTACT

GARY GOODMAN, Vice President, Sales & Leasing
(204) 997-4831
gary.goodman@capitalgrp.ca

ERIC OTT, Associate Vice President, Sales & Leasing
(204) 985-1378
eric.ott@capitalgrp.ca
Services provided by Eric A. Ott Personal Real Estate Corporation

PROPERTY DETAILS



AREA AVAILABLE Unit 1: 3,394 sq. ft.

NET RENTAL RATE \$18.95 per sq. ft.

ADDITIONAL RENT \$5.00 per sq. ft.

ZONING M3

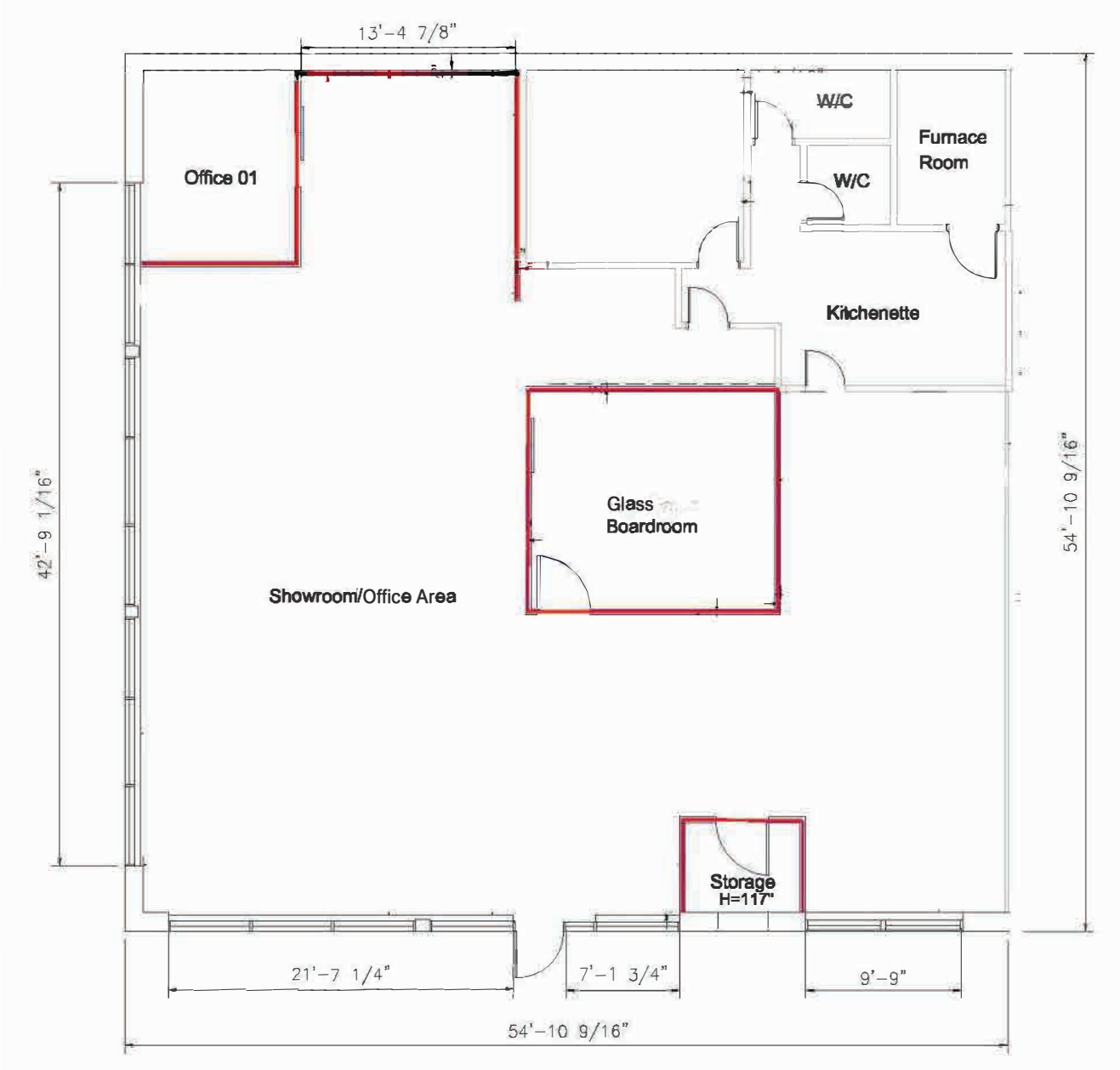
AVAILABILITY Immediately

HIGHLIGHTS

- Newly renovated office space
- End unit with excellent exposure and signage on west and north sides
- Some furniture could be available for tenant's use
- Suitable for design, financial services or other contemporary office uses



FLOOR PLAN



PHOTOS



PHOTOS



LOCATION AERIAL



MISSION IND.

VersaCold **Dufresne**

NELSON RIVER CONSTRUCTION **LAFARGE**

BRENTAG **ROOFMART**

CROSSROADS STATION SC

DUGALD IND.

TERRACON BUS. PK.

ST. BONIFACE IND. PK.

REGENT AVENUE WEST

LAGIMODIERE BOULEVARD

PANET ROAD

SITE

DUGALD ROAD

kildonan place

DRIVE TIME ANALYSIS



HWY 59
1 minute



KILDONAN PLACE
6 minutes



PERIMETER HIGHWAY
12 minutes



CHIEF PEGUIS TRAIL
12 minutes





CONTACT

GARY GOODMAN, Vice President, Sales & Leasing
(204) 997-4831
gary.goodman@capitalgrp.ca

ERIC OTT, Associate Vice President, Sales & Leasing
(204) 985-1378
eric.ott@capitalgrp.ca

Services provided by Eric A. Ott Personal Real Estate Corporation

CAPITAL COMMERCIAL REAL ESTATE SERVICES INC.

300-570 Portage Avenue, Winnipeg, MB R3C 0G4 | T (204) 943-5700 | F (204) 956-2783 | capitalgrp.ca

Disclaimer: Capital Commercial Real Estate Services Inc. ("Capital") does not accept or assume any responsibility or liability, direct or consequential, for the information set out herein, including, without limitation, any projections, images, opinions, assumptions and estimates obtained from third parties. This information has not been verified by Capital, and Capital does not guarantee the accuracy, correctness and completeness of this information. The recipient of this information should take such steps as the recipient may deem necessary to verify the information in this document prior to placing any reliance upon it. The information may change and any property described in this document may be withdrawn from the market at any time without notice or obligation to the recipient from Capital.